

WALL LINIA

3G-2WLI-DI

2" WALL

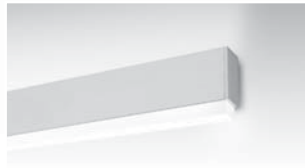
DIRECT & INDIRECT

3G

LIGHTING



DD1



DD2



Recessed Linia



Surface Linia



Pendant Linia

FEATURES

CONSTRUCTION

- 2" extruded aluminum housing with machined aluminum end caps
- Individual units and continuous runs in 1' increments
- 24 gauge LED reflector with high reflectance white powder coated finish
- Extruded acrylic lens with satin finish available in flush and drop lens options

ELECTRICAL

- Standard 120-277V, 0-10V dimmable driver with 100-1% dimming range
- 85% efficiency and 0.9 power factor
- Lutron driver options available with 100-1% dimming range
- eLdoLED Dali driver available with 100-1% dimming range
- Emergency Battery: 90 minutes

LED SYSTEM

- Available in 27K, 30K, 35K, and 40K
- Average rated life of >50,000 hours
- Color consistency 3 SDCM
- CRI>80 for 27K, 30K, 35K, and 40K

LUMEN MAINTENANCE

- L70 at >50,000 hours

MOUNTING

- Suitable for wall mount applications (2"x4" junction box)
- Fixture is secured to mounting brackets that fasten directly to the wall

FINISH

- Standard polyester powder coated matte white finish. Optional matte silver and black finish

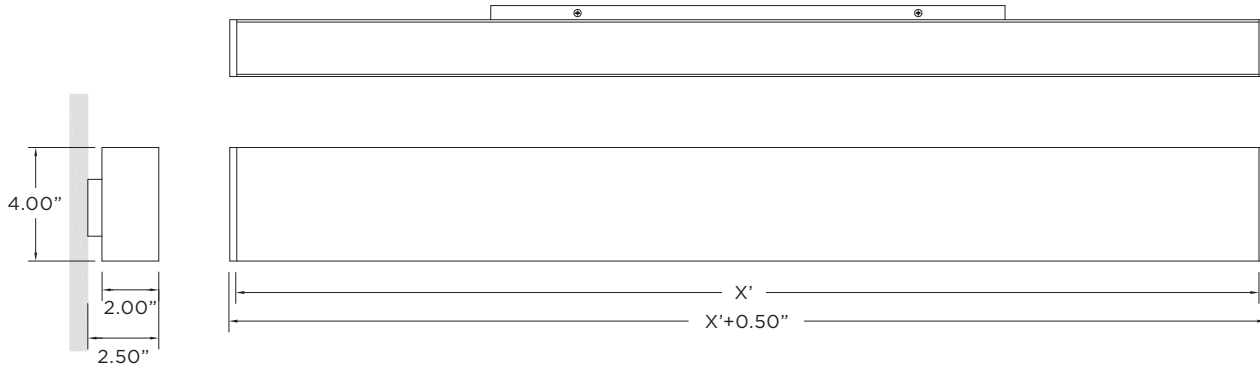
LABELS

- ETL listed. Suitable for dry or damp locations (indoor use)

WARRANTY

- 5 Year limited warranty

PROJECT	TYPE	DATE
CATALOG #		

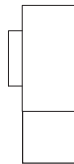
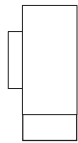
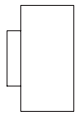


LENS OPTIONS

FL - FLUSH LENS

DD1 - 1" DROP LENS

DD2 - 2" DROP LENS



ORDERING INFORMATION

CAT. NO	LED SYSTEM		COLOR TEMP	VOLTAGE	DRIVER
	DIRECT	INDIRECT			
3G-2WLI-DI	L1 - LOW OUTPUT	L1 - LOW OUTPUT	27K - 2700K	120 - 120V	DIM - 0-10V (STANDARD 100-1%)
	L2 - STANDARD OUTPUT	L2 - STANDARD OUTPUT	30K - 3000K	277 - 277V	DHL - LUTRON (3-WIRE-100-1%)
	L4 - HIGH OUTPUT	L4 - HIGH OUTPUT	35K - 3500K	347 - 347V (0-10V ONLY)	DHL2 - LUTRON (ECOSYSTEM-100-1%)
			40K - 4000K		DALI - DALI (100-1%)

3G-2WLI-DI					
-------------------	--	--	--	--	--

LENS OPTIONS	FINISH	CIRCUITING	OPTIONS	LENGTH (FEET)
FL - FLUSH DD1 - 1" DROP LENS DD2 - 2" DROP LENS	WH - WHITE (STANDARD) SV - SILVER BK - BLACK	1C - 1 CIRCUIT 2C - 2 CIRCUITS	EM - EMERGENCY BATTERY (4' SECTION)	S - ___' (STRAIGHT RUN) Individual units available in 3', 4', 5', or 8', continuous runs available in 1' increments.

NOTE: Indirect lens available in flush only.

--	--	--	--	--

ORDERING EXAMPLE **3G-2WLI-DI-L2-L2-30K-120-DIM-FL-WH-2C-S-8'**

Copyright 2016 3G Lighting.
 P: 905-850-2305 F: 905-851-6490 | TF: 888-448-0440
 3G reserves the right to change, without notice, specifications or materials for product improvement.



WALL LINIA

3G-2WLI-DI
2" WALL
DIRECT & INDIRECT

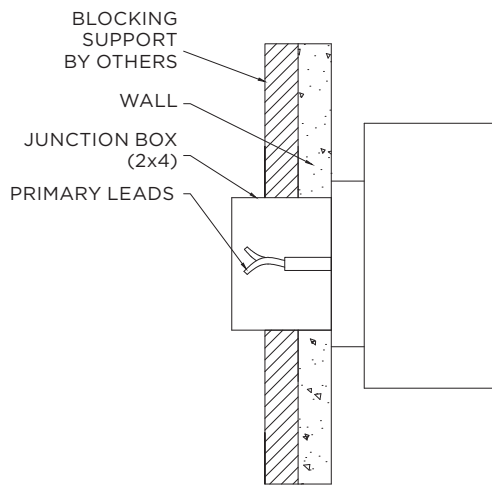


PERFORMANCE CHART (Based on 3500K, 4' length)

LENS OPTIONS	LED SYSTEM	WATTAGE/FT	LUMENS/FT	EFFICACY (LM/W)	DISTRIBUTION	IES FILES
FLUSH	L1 - LOW OUTPUT	7W	795	114	45/55	DOWNLOAD
	L2 - STANDARD OUTPUT	11W	1108	103	45/55	DOWNLOAD
	L4 - HIGH OUTPUT	18W	1889	104	45/55	DOWNLOAD
1" DROP	L1 - LOW OUTPUT	7W	816	117	40/60	DOWNLOAD
	L2 - STANDARD OUTPUT	11W	1136	106	40/60	DOWNLOAD
	L4 - HIGH OUTPUT	18W	1936	106	40/60	DOWNLOAD
2" DROP	L1 - LOW OUTPUT	7W	815	116	40/60	DOWNLOAD
	L2 - STANDARD OUTPUT	11W	1135	106	40/60	DOWNLOAD
	L4 - HIGH OUTPUT	18W	1933	106	40/60	DOWNLOAD

ADDITIONAL IES FILES FOR THIS PRODUCT FOUND [HERE](#)

MOUNTING



NOTES: