

RECESSED DOWNLIGHT

3G-DL3500 TRIM & TRIMLESS

3G
LIGHTING



Recessed Madison



Continuous Slots



Surface Madison



Pendant Informa

FEATURES

CONSTRUCTION

- Machined aluminum trim flange and aluminum insert with powder coated finishes
- 3.3" aperture with regressed soft reflector for enhanced glare control
- Anodized aluminum reflectors and extruded aluminum heatsinks
- Available for trim and trimless applications
- Maximum ceiling thickness of 1". Consult factory for modifications

ELECTRICAL

- Standard 120-277V, 0-10V dimmable drivers with 100-1% dimming range
- 85% efficiency and 0.9 power factor
- Lutron and eldoLED driver options available with 100-1% dimming range
- Fixture is pre-wired, thermally protected, and rated for through branch wiring
- Electrical enclosures easily accessible through fixture aperture
- Emergency Battery: 90 minutes

LED SYSTEM

- Available in 27K, 30K, 35K, and 40K
- Average rated life of > 50,000 hours
- Color consistency < 2 SDCM
- Standard (80+CRI). Optional (90+ and 97+CRI)
- LED modules carry a 5-year warranty
- Modules are field replaceable

LUMEN MAINTENANCE

- L70 at 60,000 hours

MOUNTING

- Remodel, new construction, and IC housing options suitable for drywall, wood, acoustic and metal pan ceilings
- Bar hangers extend from 14" to 26" and can be cut in-field for narrow stud spacing

LABELS

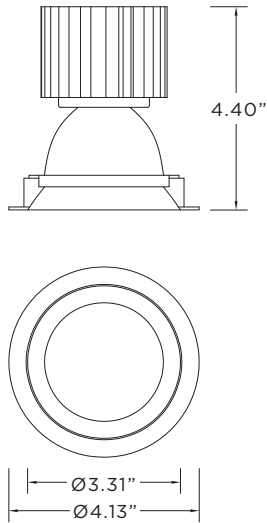
- ETL listed. Suitable for dry or damp locations

WARRANTY

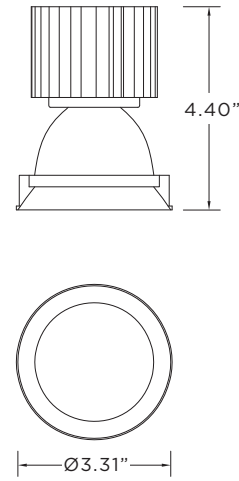
- 5 Year limited warranty

PROJECT	TYPE	DATE
CATALOG #		

WT - TRIM



XTR - TRIMLESS



ORDERING INFORMATION

CAT. NO	LUMEN OUTPUT	CRI	COLOR TEMP	BEAM ANGLE	VOLTAGE
3G-DL3500	10 - 1000 LUMENS	S80 - 80+CRI (STANDARD)	27K - 2700K	20D - 20°	120 - 120V
	15 - 1500 LUMENS	H90 - 90+CRI	30K - 3000K	40D - 40°	277 - 277V
	22 - 2200 LUMENS	H97 - 97+CRI ¹	35K - 3500K	60D - 60°	347 - 347V
	30 - 3000 LUMENS		40K - 4000K		(0-10V ONLY)

3G-DL3500					
------------------	--	--	--	--	--

DRIVER	FLANGE TYPE	INSERT FINISH	HOUSING TYPE	OPTIONS
DIM - 0-10V (STANDARD 100%-1) DHL2 - LUTRON (ECO SYSTEM 100-1%) DALI - DALI (100-1%) LE10 - FORWARD PHASE (100-10%) ² LE - FORWARD PHASE (100-1%)	XTR - TRIMLESS WT - WHITE TRIM	BI - BLACK SI - SILVER WI - WHITE	RMD - REMODEL (NON IC) NC - NEW CONSTRUCTION (NON IC) IC - IC HOUSING ³ CP - CHICAGO PLENUM SH - SHALLOW HOUSING ⁴ (NON IC) ICSH - IC SHALLOW HOUSINGS ⁵	SB70 - SANDBLASTED LENS SF70 - SOFTENING LENS LS70 - LINEAR SPREAD HXB70 - BLACK HEXELL LOUVER EM - EMERGENCY BATTERY ⁶
				Maximum 1 optical accessory.

--	--	--	--	--

ORDERING EXAMPLE: **3G-DL3500-15-S80-30K-40D-120-DIM-WT-BI-NC**

¹ 97+ CRI available up to 3000lm.
² 100-10% forward phase driver available up to 1500lm
³ IC Housing available up to 2200lm
⁴ Shallow Housing available up to 1500lm
⁵ IC Shallow Housing available up to 1500lm. Maximum 1000lm with 90+CRI and 97+CRI
⁶ Emergency battery installed remotely by others. Not accessible through the inside of the fixture

RECESSED DOWNLIGHT

3G-DL3500 TRIM & TRIMLESS



PERFORMANCE CHARTS

80+ CRI (Based on 40° Beam Angle)

LUMEN OUTPUT	SYSTEM WATTS	DELIVERED LUMENS	EFFICACY LM/W
1000 LUMENS	9.8W	988	101
1500 LUMENS	13.7W	1384	101
2200 LUMENS	20.1W	2035	101
3000 LUMENS	32.1W	2757	85.9

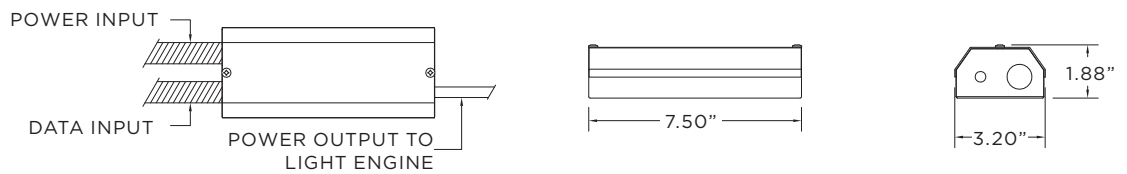
90+ CRI (Based on 40° Beam Angle)

LUMEN OUTPUT	SYSTEM WATTS	DELIVERED LUMENS	EFFICACY LM/W
1000 LUMENS	9.8W	835	85
1500 LUMENS	15.6W	1336	85
2200 LUMENS	24.2W	2063	85
3000 LUMENS	N/A	N/A	N/A

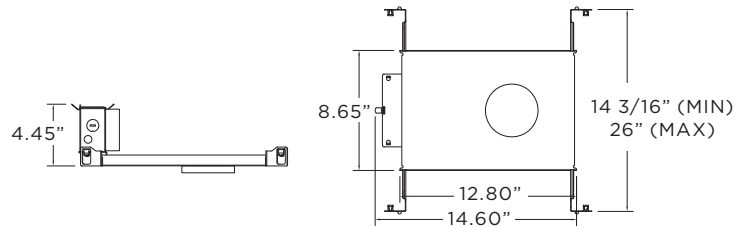
97+ CRI (Based on 40° Beam Angle)

LUMEN OUTPUT	SYSTEM WATTS	DELIVERED LUMENS	EFFICACY LM/W
1000 LUMENS	9.8W	743	76
1500 LUMENS	15.6W	1189	76
2200 LUMENS	24.2W	1835	76
3000 LUMENS	N/A	N/A	N/A

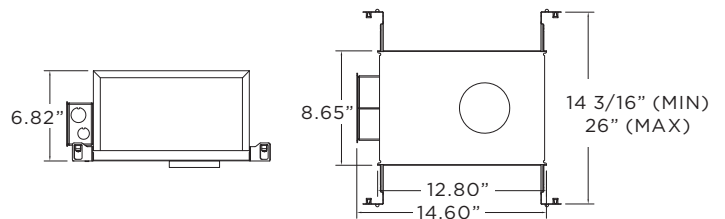
RMD - REMODEL



NC - NEW CONSTRUCTION FRAME (NON-IC)



IC - IC HOUSING (2200LM MAX) CP - CHICAGO PLENUM HOUSING



SH - SHALLOW HOUSING (1500LM MAX) ICSH - IC SHALLOW HOUSING (1500LM MAX)

