



3G-2RLI
2" RECESSED LINEAR
GRID CEILING

Narrow 2" aperture with one piece extruded aluminum housing
Individual or continuous runs available in multiple run configurations
Suitable for drywall, wood, and various grid ceilings
Extruded acrylic lens available in flush, 1" and 2" drop lens options
All drop lens options feature illuminated end caps
1% dimming standard with several driver options



ORDERING INFORMATION

| | | | |
|-------------------|----------------------|--------------|----------------------|
| PROJECT: | <input type="text"/> | TYPE: | <input type="text"/> |
| CATALOG #: | <input type="text"/> | DATE: | <input type="text"/> |

| CAT. NO | LUMEN OUTPUT | CRI | COLOR TEMP | VOLTAGE | DRIVER |
|----------------|---|------------------------------------|--------------------|--|--|
| 3G-2RLI | L250 - LOW OUTPUT (250 LM/FT) ¹ | S80 - 80+ CRI (STANDARD) | 27K - 2700K | UNV - 120/277V 347 - 347V (0-10V ONLY) | DIM - 0-10V (STANDARD 100-1%) |
| | L500 - MEDIUM OUTPUT (500 LM/FT) | | 30K - 3000K | | DHL2 - LUTRON HI-LUME LDE (100-1% ECOSYSTEM) |
| | L750 - HIGH OUTPUT (750 LM/FT) | H90 - 90+ CRI | 35K - 3500K | DALI - DALI (100-1%) | |
| | L1000 - VERY HIGH OUTPUT (1000 LM/FT) ² | | 40K - 4000K | DO1 - 0-10V (100-0.1%) | |
| | LC ____ - CUSTOM OUTPUT (SPECIFY LM/FT) | | | | |

| FLANGE TYPE | LENS OPTION | OPTIONS | LENGTH (FEET) |
|---------------------------------------|---|--|--|
| GC1 - 9/16 LAYIN | FL - FLUSH DD1 - 1" DROP LENS DD2 - 2" DROP LENS DASY - ASYMMETRIC OPTIC | EMC - EMERGENCY CIRCUIT CP - CHICAGO PLENUM | S - ____' (STRAIGHT RUN)* |
| GC1S - 9/16 TEGULAR | | | L - ____' X ____' (L-SHAPE) |
| GC1P - 9/16 TEGULAR | | | U - ____' X ____' X ____' (U-SHAPE) |
| GC2 - 15/16 LAYIN | | | R - ____' X ____' (RECTANGLE/SQUARE) |
| GC2S - 15/16 TEGULAR | | | T - ____' X ____' (T-SHAPE) |
| GC2P - 15/16 TEGULAR | | | X - ____' X ____' (X-SHAPE) |
| GC3 - 9/16 SLOT TEE TEGULAR | | | CUS - ____ (CUSTOM LAYOUT) |
| See mounting section for grid details | | | * Individual units available in 2' through 8' 2' fixtures not available for grid ceiling applications Continuous runs available in 1' increments |

1 L250 (250LM/FT) not available in 2' and 3' lengths
(Please specify LC350 for 2' and 3' fixture length when outputs lower than 500LM/FT are required)
2 L1000 (1000LM/FT) not available for H90 (93+ CRI)





3G-2RLI

LIGHTING 2" RECESSED LINEAR - GRID CEILING

PERFORMANCE CHART Based on 4' length (83+ CRI and 3500K)

| LENS OPTION | DELIVERED LUMENS (PER FOOT) | SYSTEM WATTS | EFFICACY (LM/W) |
|---------------------|-----------------------------|--------------|-----------------|
| FLUSH | 250 | 1.9 | 130 |
| | 500 | 4.4 | 114 |
| | 750 | 7.1 | 105 |
| | 1000 | 9.9 | 102 |
| 1" DROP LENS | 250 | 1.9 | 134 |
| | 525 | 4.4 | 117 |
| | 750 | 7.1 | 106 |
| | 1000 | 9.9 | 102 |
| 2" DROP LENS | 275 | 1.9 | 131 |
| | 550 | 4.4 | 132 |
| | 775 | 7.1 | 126 |
| | 1025 | 9.9 | 121 |
| ASYMMETRIC | 250 | 1.9 | 131 |
| | 500 | 3.8 | 132 |
| | 750 | 6.0 | 126 |
| | 1000 | 8.4 | 121 |

| LUMEN OUTPUT ADJUSTMENT FACTORS | CCT | Multiplier |
|--|------------|-------------------|
| | 2700K | 0.94 |
| | 3000K | 0.97 |
| | 3500K | 1.00 |
| 4000K | 1.01 | |

| EFFICACY (LPW) ADJUSTMENT FACTOR | CRI | Multiplier |
|---|------------|-------------------|
| | 93+ | 0.88 |



3G-2RLI

2" RECESSED LINEAR - GRID CEILING

TECHNICAL

HOUSING

- Extruded aluminum housing with narrow 2" aperture
- Individual units and continuous runs available in 1' increments
- 24 gauge LED reflector with high reflectance white powder coated finish
- Extruded acrylic lens with a satin finish designed for optimal performance and glare control
- Lens options available in flush, 1" drop and 2" drop
- Standard polyester powder coated matte white finish

ELECTRICAL

- Standard 0-10V, 100-1% dimming and 0.9 power factor
- Standard 120/277V universal voltage drivers. Optional 347V 0-10V driver
- Lutron EcoSystem and eldoLED Dali options available with 100-1% dimming
- All drivers are integral and easily accessible through the aperture
- Integral Emergency Battery: 90 minutes

LED SYSTEM

- Proprietary LED system
- Color consistency < 3 SDCM
- Standard (80+CRI). Optional (90+CRI)
- Available in 27K, 30K, 35K, and 40K
- Average rated life of > 50,000 hours
- 5-year warranty

MOUNTING

- Housing suspended via 1/4" threaded rod or suspension cables
- Suitable for various grid ceilings applications (see mounting details)

LISTING

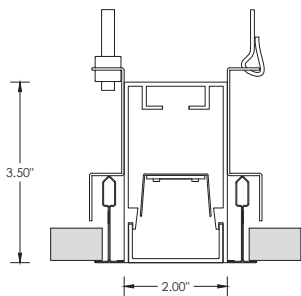
- ETL listed and tested to UL standards. Suitable for dry and damp locations

WARRANTY

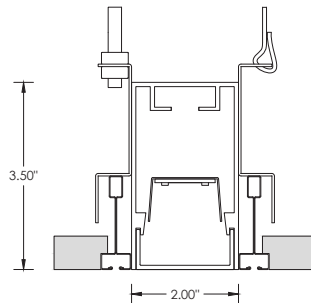
- 5 Year warranty on LED and drivers
- Manufacturer 1-year warranty for defects in material and workmanship under normal use
- Ambient temperature at fixture should not exceed 25°C

DRAWINGS AND DIMENSIONS (GRID CEILING)

GC1 - 9/16" LAYIN

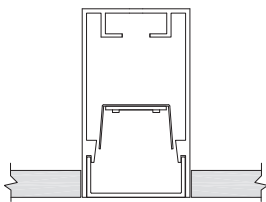


GC3 - 9/16" SLOT TEE TEGULAR

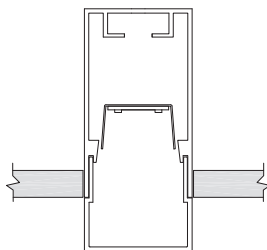


LENS OPTION

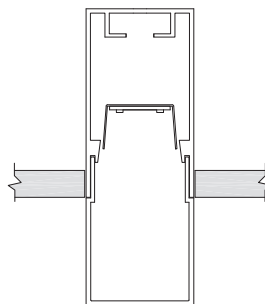
FL - FLUSH LENS



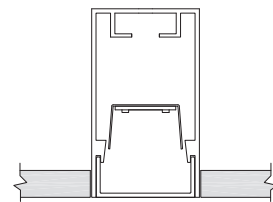
DD1 - 1" DROP LENS



DD2 - 2" DROP LENS

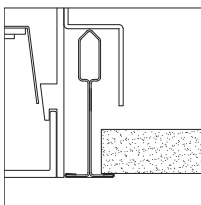


DASY - ASYMMETRIC OPTIC

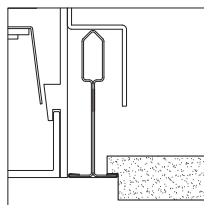


MOUNTING

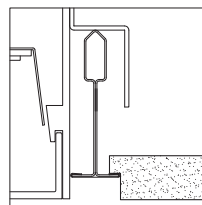
GC1 - 9/16" LAYIN



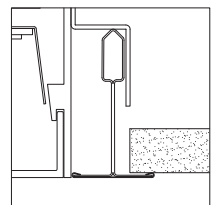
GC1S - 9/16" TEGULAR



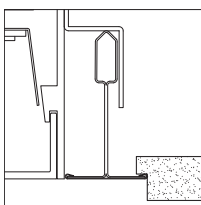
GC1P - 9/16" TEGULAR



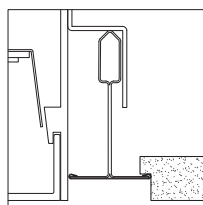
GC2 - 15/16" LAYIN



GC2S - 15/16" TEGULAR



GC2P - 15/16" TEGULAR



GC3 - 9/16" SLOT TEE TEGULAR

