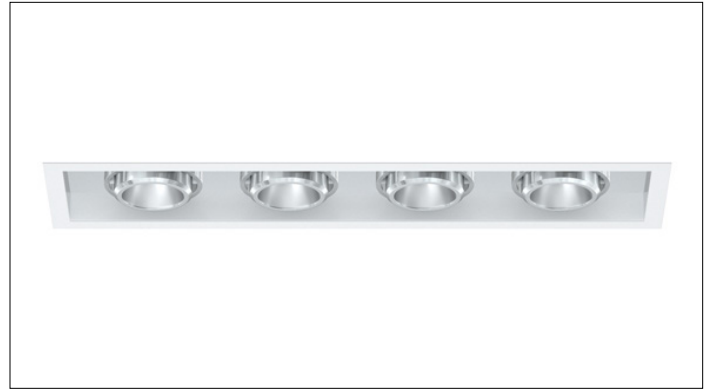


# 3G LIGHTING

## 3G-RC4

4 LIGHT RECESSED  
MADISON



Solid aluminum double gimbal with dual axis adjustability  
Standard 95+ CRI LED system with performance up to 132 LPW  
Delivered lumen range per fixture head up to 4000lm at 95+ CRI  
Regressed LED source for enhanced glare control  
10° to 90° beam angle options suitable for various applications  
New construction housing with IC housing option available  
Companion to 3G's Madison product family

<b>PROJECT:</b>		<b>TYPE:</b>	
<b>CATALOG#:</b>		<b>DATE:</b>	<b>QTY:</b>

CAT. NO	LUMEN OUTPUT (PER FIXTURE HEAD)**	CRI	COLOR TEMP	BEAM ANGLE
<b>3G-RC4</b>	<b>10</b> - 1000 LUMENS (4000 TOTAL) <b>15</b> - 1500 LUMENS (6000 TOTAL) <b>20</b> - 2000 LUMENS (8000 TOTAL) <b>25</b> - 2500 LUMENS (10,000 TOTAL) <b>30</b> - 3000 LUMENS (12,000 TOTAL) <b>40</b> - 4000 LUMENS (16,000 TOTAL)  All lumen outputs are <b>delivered lumens</b> at 95+ CRI	<b>H95</b> - 95+ CRI	<b>27K</b> - 2700K <b>30K</b> - 3000K <b>35K</b> - 3500K <b>40K</b> - 4000K	<b>10D</b> - 10° <sup>1</sup> <b>20D</b> - 20° <b>40D</b> - 40° <b>60D</b> - 60° <b>90D</b> - 90° *  <small>*90D optic supplied with lens Not available with other lens options</small>

VOLTAGE	DRIVER	TRIM FLANGE	GIMBAL FINISH
<b>UNV</b> - 120/277V <b>120</b> - 120V <b>347</b> - 347V <sup>2</sup>	<b>DIM</b> - 0-10V (100-1%) <b>LE</b> - PHASE DIM <sup>3</sup> (TRIAC/ELV, 100-1%)  <b>D01</b> - 0-10V (100-0.1%) <b>DALI</b> - DALI (100-1%) <sup>4</sup> <b>DMX</b> - DMX (100-0%) <b>DHL2</b> - LUTRON HI-LUME LDE1 (1% ECOSYSTEM)	<b>WT</b> - WHITE TRIM <b>BT</b> - BLACK TRIM <b>ST</b> - SILVER TRIM <b>XTR</b> - TRIMLESS (MUD-IN DRYWALL)	<b>NG</b> - NATURAL ALUMINUM <b>BG</b> - BLACK GIMBAL <b>WG</b> - WHITE GIMBAL

HOUSING FINISH	HOUSING TYPE	OPTIONS
<b>BK</b> - BLACK (STANDARD) <b>WH</b> - WHITE <b>CF</b> - CUSTOM	<b>NC</b> - NEW CONSTRUCTION (NON-IC)	<b>2C</b> - 2 CIRCUIT <b>BH</b> - C-CHANNEL BAR HANGERS <b>CP</b> - CHICAGO PLENUM <sup>5</sup> <b>EMR</b> - REMOTE EMERGENCY BATTERY <sup>6</sup> <b>SF</b> - SOFTENING LENS <b>SB</b> - SANDBLASTED LENS <b>LS</b> - LINEAR SPREAD LENS <b>HXB</b> - BLACK HEXCELL LOUVER <b>STN</b> - NATURAL SNOOT <b>STB</b> - BLACK SNOOT <b>STW</b> - WHITE SNOOT  <small>*Lens option not available with 90D optic Maximum 3 optical accessories per fixture head</small>

<sup>1</sup> 10D reflector available up to 2500lm  
<sup>2</sup> 347 available in "DIM" 0-10V only (100-1%)  
<sup>3</sup> Phase dimming options available in 120V only  
<sup>4</sup> DALI-2 (Type 6) provided as standard. Please consult factory for DALI (Type 8) options  
<sup>5</sup> Chicago Plenum option available with New Construction Housing  
<sup>6</sup> Supplied with enclosure with Emergency Battery and driver. Installed remotely by others. Not accessible through fixture aperture

**\*\*** 3G has upgraded our LED system and overall performance at no additional cost. We now offer 95+CRI as standard. All lumen outputs are delivered lumens. This upgraded LED system is more efficient than our previous 80CRI, 90CRI, and 97CRI options. Please see the last page of this spec sheet to cross-reference old lumen outputs with our new, 95+CRI lumen output options

**PERFORMANCE (PER FIXTURE HEAD)**

LUMEN OUTPUT	DELIVERED LUMENS	SYSTEM WATTS	EFFICACY (LPW)
1000	1000	8.1	123
1500	1500	12.3	122
2000	2000	16.2	123
2500	2500	20.5	122
3000	3000	25.8	116
4000	4000	30.1	117

BASED ON 95+ CRI, 3500K, 40D OPTIC  
Lumen output and actual wattage may vary +/- 5%

**MULTIPLIERS**

BEAM ANGLE	
10D	1.05
20D	1.03
40D	1.00
60D	1.00
90D	0.90

COLOR TEMP	
2700K	0.98
3000K	1.00
3500K	1.00
4000K	1.02

**HOUSING**

New construction housing  
Housing fabricated in cold rolled steel. Standard black powder coated finish  
Maximum ceiling thickness of 1". Consult factory for modifications  
All housing options designed to be easily converted in field to trim or trimless with minimal components  
Housing rated for #12 AWG (4 in, 4 out), 90°C conductors and through branch wiring

**TRIM FLANGE**

Features a 3/4" removable trim assembly designed to conceal inner hardware

**TRIMLESS**

Aluminum mudding flange features a unique reveal that emulates drywall  
Integral aluminum blocking support provided to ensure fixture is properly secured within ceiling structure

**ADJUSTABILITY**

Solid aluminum double gimbal with dual axis adjustability  
Each double gimbal can be locked in place

**OPTICS**

Proprietary anodized, aluminum reflectors  
Beam angle available in 10°, 20°, 40° and 60°, and 90°  
Reflectors are field replaceable (10° reflector not interchangeable)

**LED SYSTEM**

Standard 95+ CRI  
Color consistency <2 SDCM  
Available in 27K, 30K, 35K, and 40K  
L90 > 50,000 hours

**ELECTRICAL**

Standard 0-10V, constant current drivers  
100-1% dimming range and >0.9 power factor  
Standard 120/277V universal voltage with several driver options  
120V Forward Phase/Reverse Phase driver option (100-1%)  
Integral drivers are easily accessible through luminaire aperture

**EMERGENCY**

7W output for 90 minutes (One fixture head +/- 850lm at 95+ CRI)  
Title 24 Certified  
Remote emergency battery not accessible through fixture aperture  
Maximum remote mounting distance:  
3000lm or below - 50ft (12AWG) or 25ft (14AWG)  
Above 3000lm - 30ft (12AWG) or 20ft (14AWG)  
Caution: Emergency Battery utilizes more than one power source and servicing should be performed by qualified personnel

**MOUNTING**

Trim fixture designed for use in drywall, wood, acoustic, and other architectural ceilings  
Trimless fixture designed for use in drywall, mud-in ceiling applications  
Optional C-Channel bar hangers available  
Butterfly brackets compatible with 1/2" x 1/2" channel, 1/2", 5/8", 3/4" bar hanger, 1/2" EMT, and furring strips (supplied by others)

**LISTING**

ETL listed and conforms to UL1598 standard  
Certified to CSA22.2 NO.250.0.  
Rated for dry or damp locations

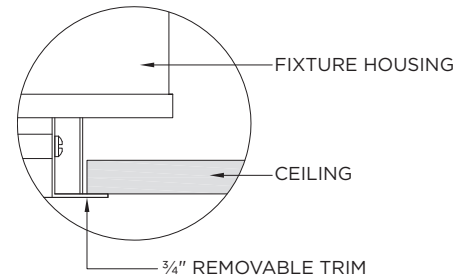
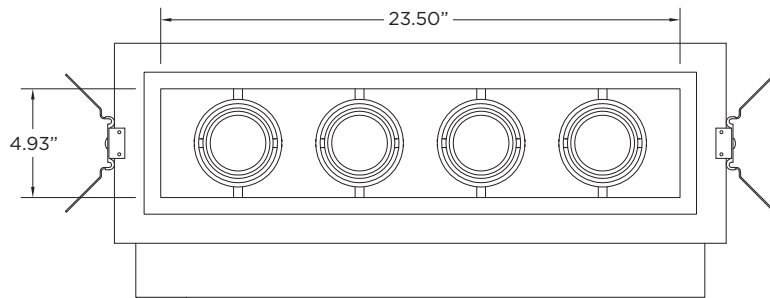
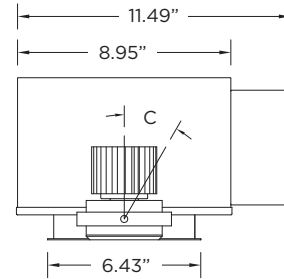
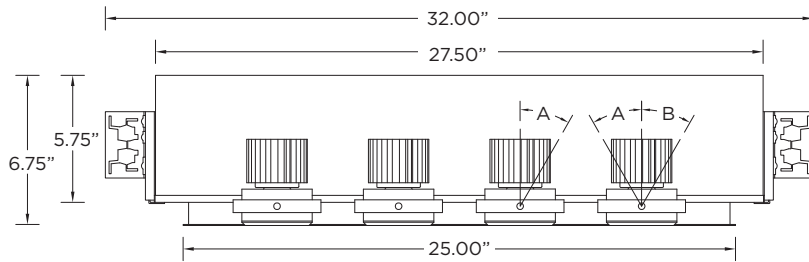
**WARRANTY**

5 year limited warranty  
LED system rated for operation in ambient environments up to 25°C

**TRIM HOUSING OPTIONS**

- NC** - NEW CONSTRUCTION (NON-IC)
- IC** - IC HOUSING (2500LM MAX)
- CP** - CHICAGO PLENUM HOUSING

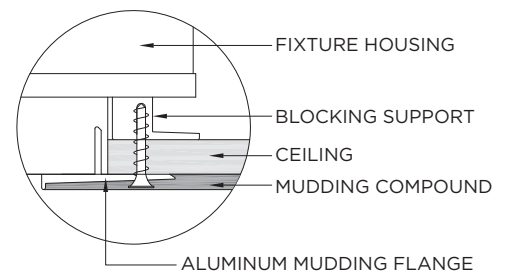
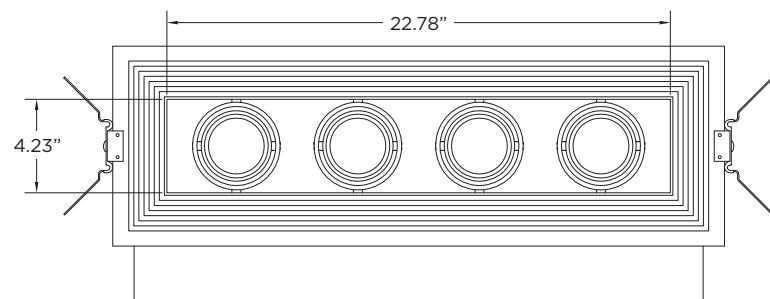
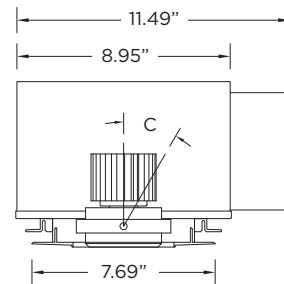
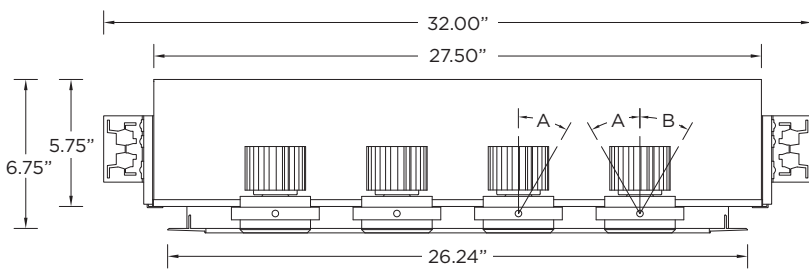
LUMEN OUTPUT	A	B	C
Up to 2500lm	45°	45°	45°
3000lm	25°	45°	45°
4000lm	15°	45°	30°



**TRIMLESS HOUSING OPTIONS**

- NC** - NEW CONSTRUCTION (NON-IC)
- IC** - IC HOUSING (2500LM MAX)
- CP** - CHICAGO PLENUM HOUSING

LUMEN OUTPUT	A	B	C
Up to 2500lm	45°	45°	45°
3000lm	25°	45°	45°
4000lm	15°	45°	30°



**LUMEN OUTPUT REFERENCE CHART**

3G has upgraded our LED system and overall performance at no additional cost. We now offer 95+CRI as standard. All lumen outputs are delivered lumens. This new LED system is more efficient than our previous 80CRI, 90CRI, and 97CRI options. Please use these charts to cross-reference old lumen outputs with our new, 95+CRI lumen output options

**80CRI REFERENCE CHARTS**

MATCH THE GRADIENT SHADE FROM THE OLD LUMEN OUTPUT CHART TO THE NEW LUMEN OUTPUT OPTION

OLD 80CRI SPECS			
LUMEN OUTPUT	DELIVERED LUMENS	SYSTEM WATTS	EFFICACY (LPW)
1000	1080	10.3	105
1500	1444	14.0	103
2200	2089	22.0	95
3000	2815	31.1	90
4000	3958	43.0	92

NEW 95+CRI SPECS			
LUMEN OUTPUT	DELIVERED LUMENS	SYSTEM WATTS	EFFICACY (LPW)
1000	1000	8.1	123
1500	1500	12.3	122
2000	2000	16.2	123
2500	2500	20.5	122
3000	3000	25.8	116
4000	4000	30.1	117

**90CRI REFERENCE CHARTS**

MATCH THE GRADIENT SHADE FROM THE OLD LUMEN OUTPUT CHART TO THE NEW LUMEN OUTPUT OPTION

OLD 90CRI SPECS			
LUMEN OUTPUT	DELIVERED LUMENS	SYSTEM WATTS	EFFICACY (LPW)
1000	951	10.3	92
1500	1271	14.0	91
2200	1838	22.0	84
3000	2477	31.1	79
4000	3483	43.0	81

NEW 95+CRI SPECS			
LUMEN OUTPUT	DELIVERED LUMENS	SYSTEM WATTS	EFFICACY (LPW)
1000	1000	8.1	123
1500	1500	12.3	122
2000	2000	16.2	123
2500	2500	20.5	122
3000	3000	25.8	116
4000	4000	30.1	117