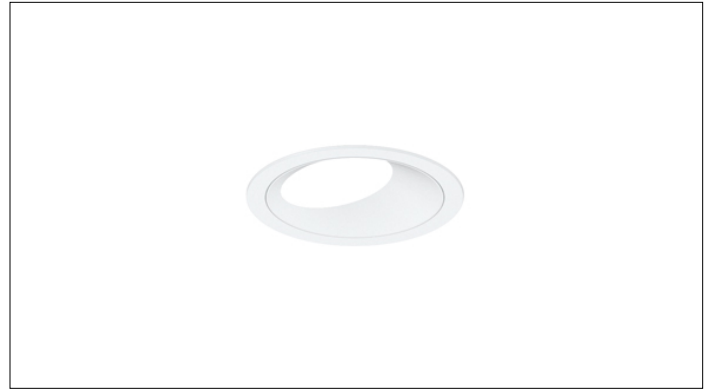


# 3G LIGHTING

## 3G-DL45RWW

4.5" ROUND WALL WASH  
DYNAMIC WHITE



4.5" round, high performance dynamic white wall wash downlight  
Dim to Warm and Tunable White LED options up to 2000lm (90+ CRI)  
Regressed LED source for enhanced glare control  
Proprietary wall wash optic and lens  
Remodel housing available along with other housing options  
1% dimming standard with several integral driver options

**3GD 3GT**

<b>PROJECT:</b>		<b>TYPE:</b>	
<b>CATALOG#:</b>		<b>DATE:</b>	<b>QTY:</b>

CAT. NO	LED SOURCE	LUMEN OUTPUT	CRI	BEAM ANGLE	VOLTAGE
<b>3G-DL45RWW</b>	<b>DW</b> - DIM TO WARM (1800K-3000K) <b>TW</b> - TUNABLE WHITE <sup>1</sup> (2700K-6500K)	<b>08</b> - 800 LUMENS <b>12</b> - 1200 LUMENS <b>20</b> - 2000 LUMENS	<b>H90</b> - 90+ CRI	<b>WW</b> - WALL WASH	<b>UNV</b> - 120/277V <b>120</b> - 120V <b>347</b> - 347V <sup>2</sup>

DRIVER	FLANGE TYPE	BEVELED INSERT	HOUSING TYPE
<b>DIM</b> - 0-10V (100-1%) <b>LE</b> - PHASE DIM <sup>3</sup> (TRIAC/ELV, 100-1%) <b>D01</b> - 0-10V (100-0.1%) <sup>1</sup> <b>DALI</b> - DALI (100-1%) <sup>1,4</sup> <b>DHL2</b> - LUTRON HI-LUME (1% ECOSYSTEM) <b>DMX</b> - DMX (100-0%) <sup>1</sup>	<b>WT</b> - WHITE TRIM <b>BT</b> - BLACK TRIM <b>ST</b> - SILVER TRIM <b>XTR</b> - TRIMLESS (MUD-IN DRYWALL)	<b>WI</b> - WHITE <b>BI</b> - BLACK <b>SI</b> - SILVER	<b>RMD</b> - REMODEL (NON-IC) <b>NCF</b> - NEW CONSTRUCTION FRAME (NON-IC) <b>NC</b> - NEW CONSTRUCTION <sup>5</sup> HOUSING <b>IC</b> - NEW CONSTRUCTION IC HOUSING

OPTIONS
<b>CP</b> - CHICAGO PLENUM <sup>5</sup> <b>BH</b> - C-CHANNEL BAR HANGERS <b>EMR</b> - EMERGENCY BATTERY (REMOTE) <sup>6</sup>
Maximum 1 optical accessory

<sup>1</sup> Tunable White option available with D01, DALI and DMX drivers

<sup>2</sup> 347 available in "DIM" 0-10V only (100-1%)

<sup>3</sup> Phase dimming options available in 120V only

<sup>4</sup> DALI-2 (Type 6) provided as standard. Please consult factory for DALI (Type 8) options

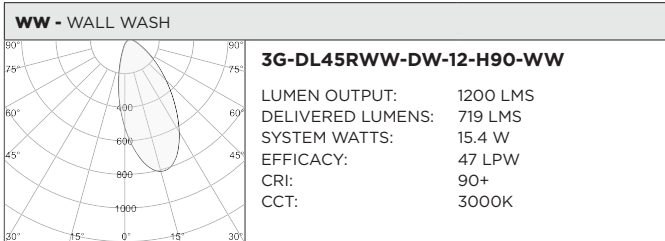
<sup>5</sup> Chicago Plenum option available with New Construction Housing

<sup>6</sup> Fixture operates at 6500K in emergency mode. Emergency battery installed remotely by others. Not accessible through the inside of the fixture

**3GD** - Warm Dim  
**3GT** - Tunable White

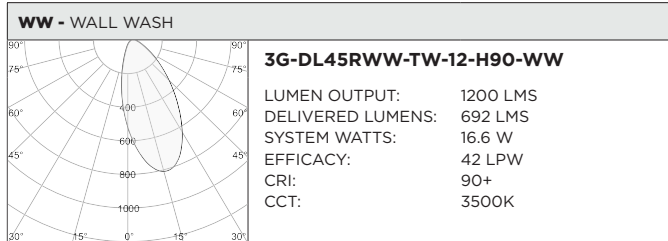
BASED ON WALL WASH OPTIC AND 3000K SOURCE

LUMEN OUTPUT	90+ CRI (3000K)		
	DELIVERED LUMENS	SYSTEM WATTS	EFFICACY (LPW)
<b>1200LMs</b>	719	15.4	47
<b>2000LMs</b>	1022	23.2	44



BASED ON WALL WASH OPTIC

LUMEN OUTPUT	90+ CRI (2700K)			90+ CRI (3500K)			90+ CRI (6500K)		
	DELIVERED LUMENS	SYSTEM WATTS	EFFICACY (LPW)	DELIVERED LUMENS	SYSTEM WATTS	EFFICACY (LPW)	DELIVERED LUMENS	SYSTEM WATTS	EFFICACY (LPW)
<b>1200LMs</b>	652	16.6	39	692	16.6	42	756	16.6	46
<b>2000LMs</b>	939	24.5	38	993	24.5	41	1090	24.5	44



## HOUSING

Remodel, new construction frame, shallow housing, and IC housing options available

Maximum ceiling thickness of 1" (1.5" for Millwork Flangeless and Remodel options). Consult factory for modifications

All housing options designed to be easily converted in field to trim or trimless with minimal components

Housing rated for #12 AWG (4 in, 4 out), 90°C conductors and through branch wiring

## BEVELED INSERT

Cast aluminum beveled insert with matte powder coated finish  
4.5" aperture with regressed LED source for enhanced glare control

## TRIM

Machined aluminum trim flange with matte powder coated finish and minimal 0.375" overlap

## TRIMLESS

Mudding flange features a perforated surface for easy mud-in application  
Integral blocking support provided to ensure fixture is properly secured within ceiling structure

## OPTICS

Regressed LED source for enhanced glare control

Proprietary wall wash optic

Asymmetrical lens provides uniformity and smooth illumination across and down the wall

## LISTING

ETL listed and conforms to UL1598 standard. Certified to CSA22.2 NO.250.0. Rated for indoor dry or damp locations

## WARRANTY

5 Year Warranty on LED and drivers

Manufacturer 1 Year Warranty for defects in material and workmanship under normal use

Ambient temperature at fixture should not exceed 25°C

## ELECTRICAL

Standard 0-10V, constant current drivers with 100-1% dimming range and >0.9 power factor

Standard 120/277V universal voltage drivers. Optional 347V, 0-10V drivers  
120V Forward Phase/Reverse Phase driver option with 100-1% dimming range  
eldoLED 0-10V driver option available with 100-0.01% dimming range  
eldoLED DALI and Lutron EcoSystem driver options available with 100-1% dimming range

DMX driver option available with 100-0% dimming range

All drivers are integral and easily accessible through fixture aperture

## EMERGENCY

Remote emergency battery installed by others (not accessible through fixture aperture)

7W output for 90 minutes (+/- 700lm at 80+ CRI)

CA Title 24 Certified

Maximum remote mounting distance:

50ft (12AWG) or 25ft (14AWG) for fixtures operating at 3000lm or below

30ft (12AWG) or 20ft (14AWG) for fixtures operating above 3000lm

Caution: Emergency Battery utilizes more than one power source and servicing should be performed by qualified personnel

## LED SYSTEM

<3 SDCM LED module (field replaceable)

Standard 90+ CRI

Dim to Warm (1800K-3000K)

Tunable White (2700K-6500K)

L70 >50,000 hours

5 Year Warranty

## MOUNTING

Trim fixture designed for use in drywall, wood, acoustic, and other architectural ceilings

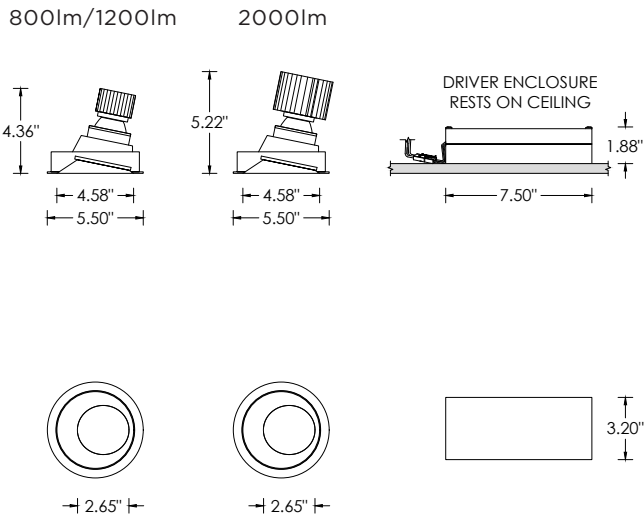
Trimless fixture designed for use in drywall, mud-in ceiling applications

Recommended ceiling cut-out for all housing options (4 5/8" diameter)

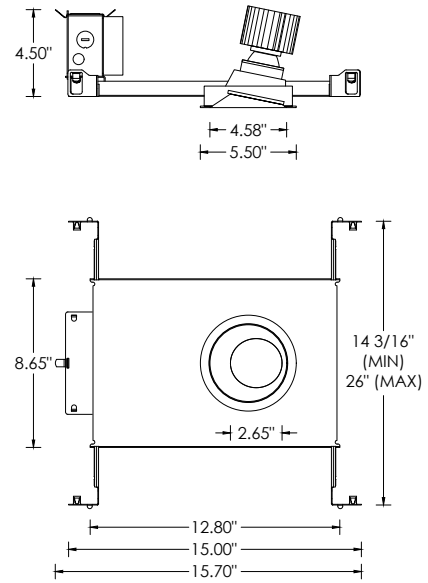
New construction frame ships with bar hangers (14" to 26" extension)

Standard new construction and IC housings available with optional c-channel bar hangers

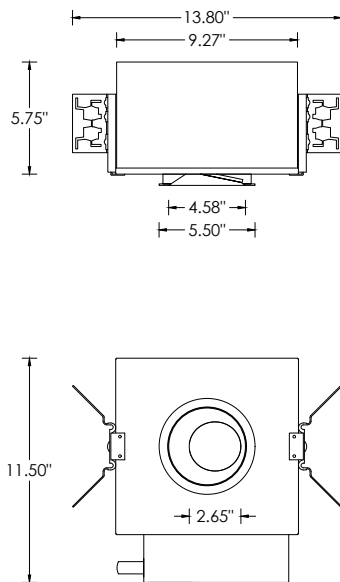
**RMD - REMODEL (NON-IC)**



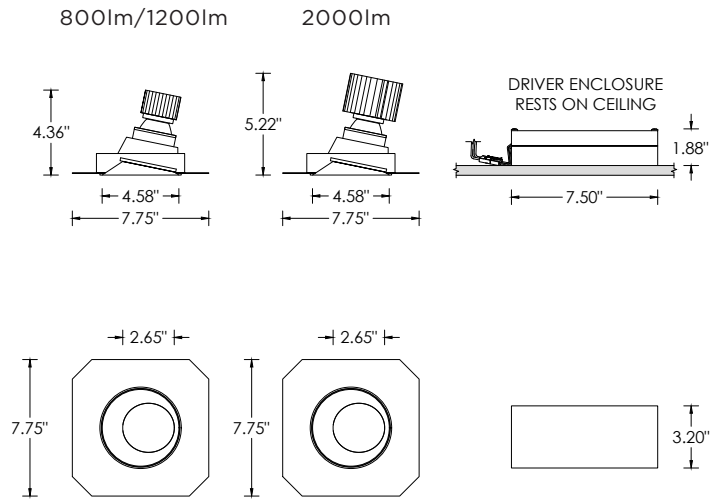
**NCF - NEW CONSTRUCTION FRAME (NON-IC)**



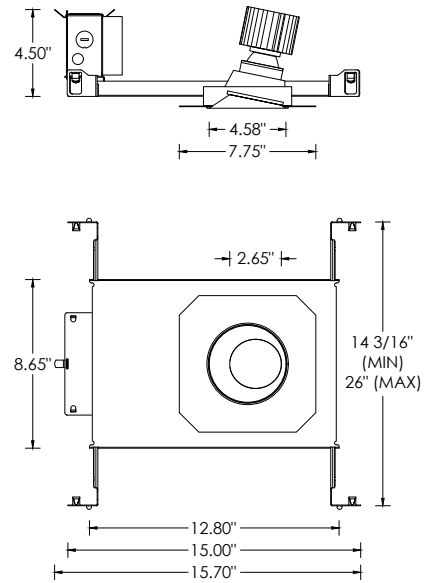
**NC - NEW CONSTRUCTION HOUSING (NON-IC AND CP RATED)**  
**IC - NEW CONSTRUCTION IC HOUSING**



**RMD - REMODEL (NON-IC)**



**NCF - NEW CONSTRUCTION FRAME (NON-IC)**



**NC - NEW CONSTRUCTION HOUSING (NON-IC AND CP RATED)**  
**IC - NEW CONSTRUCTION IC HOUSING**

