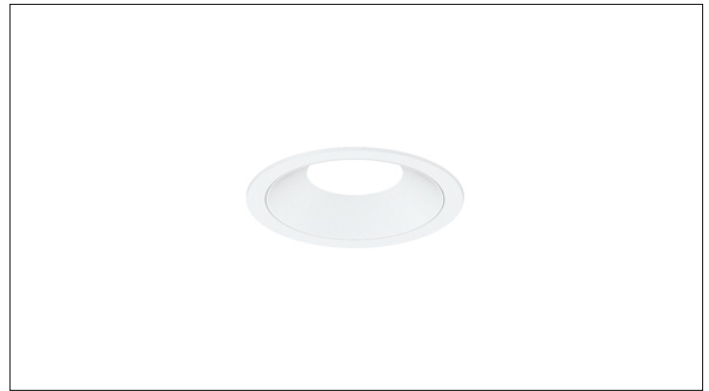


# 3G LIGHTING

## 3G-DL33RA

3.3" ROUND ADJUSTABLE  
DOWNLIGHT

3.3" diameter, adjustable downlight with upgraded performance  
Standard 95+ CRI LED system with performance up to 138 LPW  
Delivered lumen range up to 2500lm at 95+ CRI  
Regressed LED source for enhanced glare control  
Proprietary hot aiming mechanism with sliding center beam optimization  
0° - 40° lockable tilt and 360° lockable rotation  
Title 24 JA8 certified with maximum 1500lm output  
Companion to 3G's Cylinder product family



<b>PROJECT:</b>		<b>TYPE:</b>	
<b>CATALOG#:</b>		<b>DATE:</b>	<b>QTY:</b>

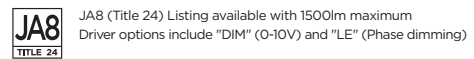
CAT. NO	LUMEN OUTPUT **	CRI	COLOR TEMP	BEAM ANGLE	VOLTAGE
3G-DL33RA	10 - 1000 LUMENS	H95 - 95+ CRI	27K - 2700K	20D - 20° <sup>1</sup>	UNV - 120/277V 120 - 120V 347 - 347V <sup>2</sup>
	15 - 1500 LUMENS		30K - 3000K	40D - 40°	
	20 - 2000 LUMENS		35K - 3500K	60D - 60°	
	25 - 2500 LUMENS		40K - 4000K		
All lumen outputs are delivered lumens at 95+ CRI					

DRIVER	TRIM FLANGE	BEVELED INSERT	HOUSING TYPE
<b>DIM</b> - 0-10V (100-1%) <b>LE</b> - PHASE DIM <sup>3</sup> <small>(TRIAC/ELV, 100-1%)</small> <b>DO1</b> - 0-10V (100-0.1%) <b>DALI</b> - DALI (100-1%) <sup>4</sup> <b>DMX</b> - DMX (100-0%) <sup>5</sup> <b>DHL2</b> - LUTRON HI-LUME LDE1 <small>(1% ECOSYSTEM)</small>	<b>WT</b> - WHITE TRIM <b>BT</b> - BLACK TRIM <b>ST</b> - SILVER TRIM <b>XTR</b> - TRIMLESS (MUD-IN DRYWALL) <b>MWF</b> - FLANGELESS MILLWORK <sup>6</sup>	<b>WI</b> - WHITE <b>BI</b> - BLACK <b>SI</b> - SILVER	<b>RMD</b> - REMODEL (NON-IC) <b>NCF</b> - NEW CONSTRUCTION FRAME (NON-IC) <b>SH</b> - SHALLOW HOUSING <sup>7</sup> <small>(IC RATED &amp; CP RATED)</small> <b>NC</b> - NEW CONSTRUCTION HOUSING (CP RATED) <b>IC</b> - NEW CONSTRUCTION IC HOUSING <sup>7</sup>  <small>NCF and SH housings ship nailer type bar hangers            NC and IC housings available with optional            C-channel bar hangers</small>

OPTIONS
<b>SF</b> - SOFTENING LENS (SUPPLIED STANDARD) <sup>*</sup> <b>SB</b> - SANDBLASTED LENS <b>LS</b> - LINEAR SPREAD LENS <b>WL</b> - WET LOCATION RATED (SUPPLIED WITH SOFTENING LENS) <b>CP</b> - CHICAGO PLENUM <sup>8</sup> <b>BH</b> - C-CHANNEL BAR HANGERS (FOR NC AND IC HOUSINGS ONLY) <b>EMR</b> - REMOTE EMERGENCY BATTERY <sup>9</sup> <b>EMB</b> - INTEGRAL EMERGENCY BATTERY (ABOVE CEILING ACCESS REQUIRED) <sup>10</sup>  <small>Maximum 1 optical accessory</small>

**\*\*** 3G has upgraded our LED system and overall performance at no additional cost. We now offer 95+CRI as standard. All lumen outputs are delivered lumens. This upgraded LED system is more efficient than our previous 80CRI, 90CRI, and 97CRI options. Please see the last page of this spec sheet to cross-reference old lumen outputs with our new, 95+CRI lumen output options

1 20D reflector available up to 1500lm  
 2 347 available in "DIM" 0-10V only (100-1%)  
 3 Phase dimming options available in 120V only  
 4 DALI-2 (Type 6) provided as standard. Please consult factory for DALI (Type 8) options  
 5 2500lm not available with DMX driver option  
 6 MWF not available with Remodel (NON-IC)  
 7 Shallow Housing and New Construction IC housing available up to 1500lm  
 8 Chicago Plenum option available with Shallow Housing (1500lm max) and New Construction Housing  
 9 Supplied with enclosure with Emergency Battery and driver. Installed remotely by others. Not accessible through fixture aperture  
 10 Available with NCF (New construction frame housing) only. Above ceiling access required. Not accessible through fixture aperture



**PERFORMANCE**

LUMEN OUTPUT	DELIVERED LUMENS	SYSTEM WATTS	EFFICACY (LPW)
1000	1000	9.3	109
1500	1500	14.0	107
2000	2000	25.4	79
2500	2500	32.0	78

BASED ON 95+ CRI, 3500K, 40D OPTIC WITH SOFTENING LENS  
Lumen output and actual wattage may vary +/- 5%

**MULTIPLIERS**

BEAM ANGLE	
20D	1.27
40D	1.00
60D	0.88

COLOR TEMP	
2700K	0.98
3000K	1.00
3500K	1.00
4000K	1.02

**HOUSING**

Remodel, new construction frame, shallow housing, new construction and IC housing options available  
Maximum ceiling thickness of 1.5". Consult factory for modifications  
All housing options (except millwork) designed to be easily converted in field to trim or trimless with minimal components  
Housing rated for #12 AWG (4 in, 4 out), 90°C conductors and through branch wiring

**BEVELED INSERT**

Cast aluminum beveled insert with matte powder coated finish  
3.3" aperture with regressed LED source for enhanced glare control

**TRIM**

Machined aluminum trim flange with matte powder coated finish and minimal 0.375" overlap

**TRIMLESS**

Mudding flange features a perforated surface for easy mud-in application  
Integral blocking support provided to ensure fixture is properly secured within ceiling structure

**OPTICS**

Proprietary anodized, aluminum reflectors  
Beam angle available in 20°, 40° and 60°  
Reflectors are field replaceable (20° reflector not interchangeable)  
Softening lens supplied standard  
0° - 40° lockable tilt and 360° lockable rotation (center beam optimization)

**LED SYSTEM**

Standard 95+ CRI  
Color consistency <2 SDCM  
Available in 27K, 30K, 35K, and 40K  
L90 > 50,000 hours

**ELECTRICAL**

Standard 0-10V, constant current drivers  
100-1% dimming range and >0.9 power factor  
Standard 120/277V universal voltage with several driver options  
120V Forward Phase/Reverse Phase driver option (100-1%)  
Integral drivers are easily accessible through luminaire aperture

**EMERGENCY**

7W output for 90 minutes (+/- 765lm at 95+ CRI). Title 24 Certified  
Integral emergency battery (above ceiling access required)  
Remote emergency battery (not accessible through fixture aperture)  
Maximum remote mounting distance:  
3000lm or below - 50ft (12AWG) or 25ft (14AWG)  
Above 3000lm - 30ft (12AWG) or 20ft (14AWG)  
Caution: Emergency Battery utilizes more than one power source and servicing should be performed by qualified personnel

**MOUNTING**

Trim fixture designed for use in drywall, wood, acoustic, and other architectural ceilings  
Trimless fixture designed for use in drywall, mud-in ceiling applications  
Recommended cut-out for Millwork Flangeless option (3.525")  
Recommended cut-out for other housing options (3 13/16")  
New construction frame and IC rated shallow housing ship with nailer type bar hangers (14" to 26" extension)  
Optional C-Channel bar hangers available for NC and IC housing options

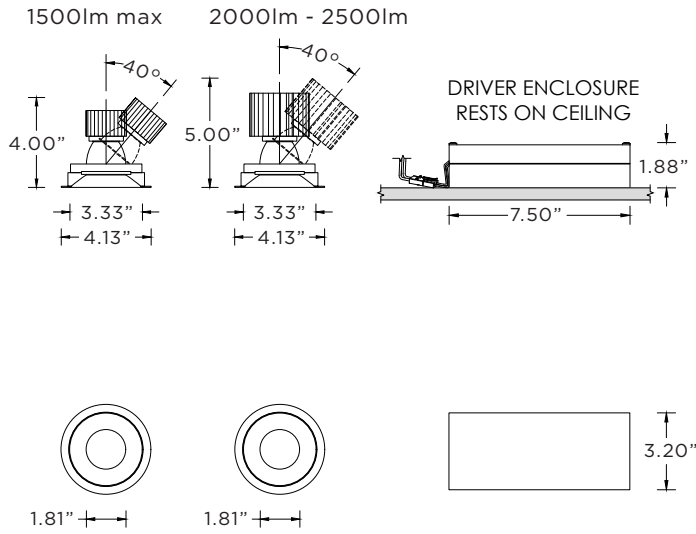
**LISTING**

ETL listed and conforms to UL1598 standard  
Certified to CSA22.2 NO.250.0.  
JA8 (Title 24) Listed  
Rated for dry or damp locations

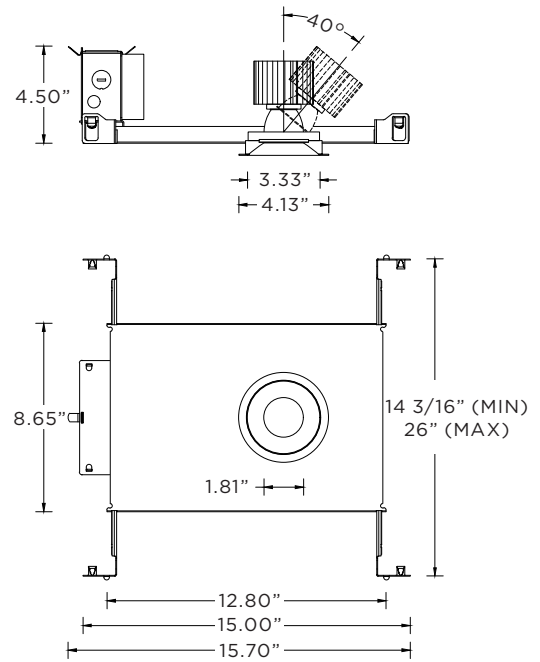
**WARRANTY**

5 year limited warranty  
LED system rated for operation in ambient environments up to 25°C

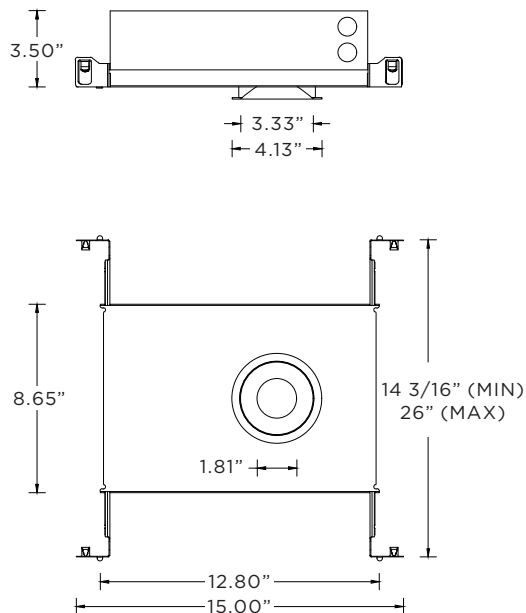
**RMD - REMODEL (NON-IC)**



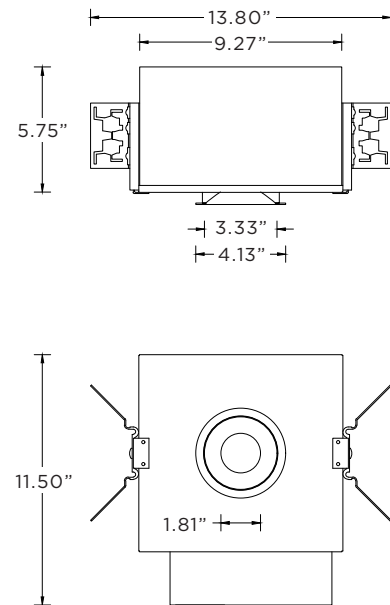
**NCF - NEW CONSTRUCTION FRAME (NON-IC)**



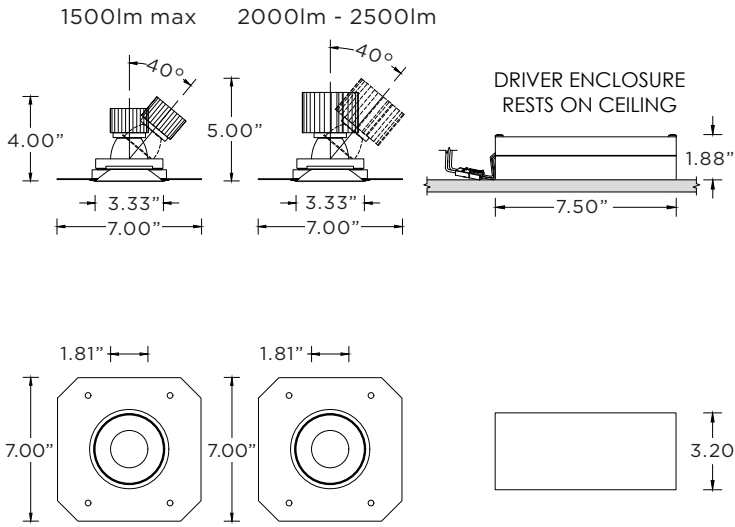
**SH - SHALLOW HOUSING (1500LM MAX)**  
(IC RATED AND CP RATED)



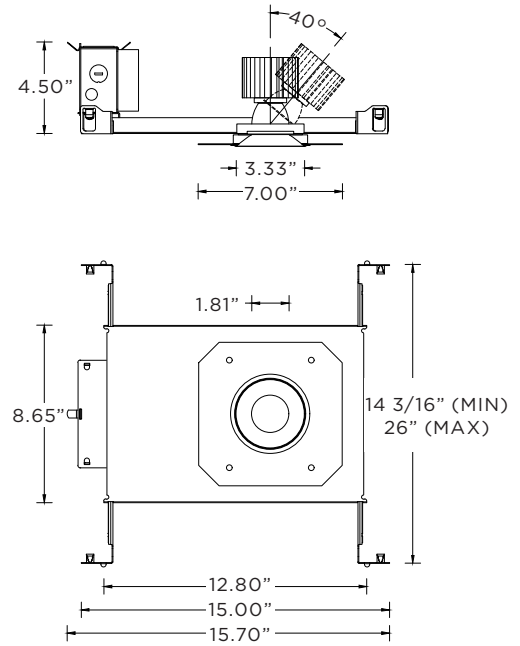
**NC- NEW CONSTRUCTION HOUSING (NON-IC AND CP RATED)**  
**IC - NEW CONSTRUCTION IC HOUSING (1500LM MAX)**



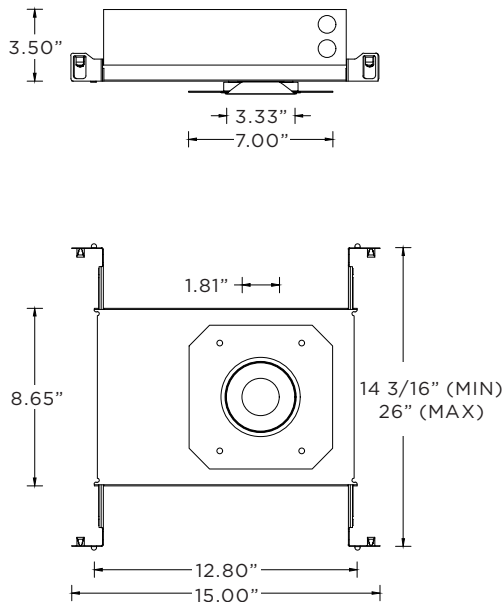
**RMD - REMODEL (NON-IC)**



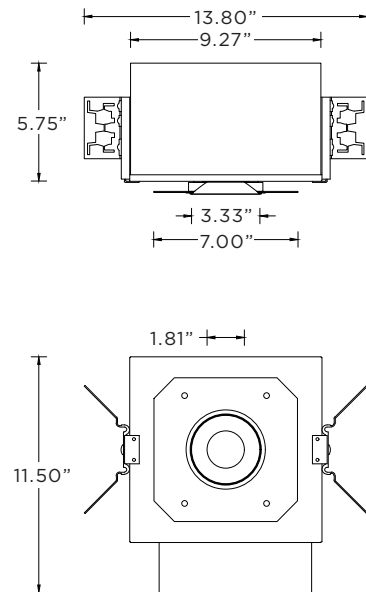
**NCF - NEW CONSTRUCTION FRAME (NON-IC)**



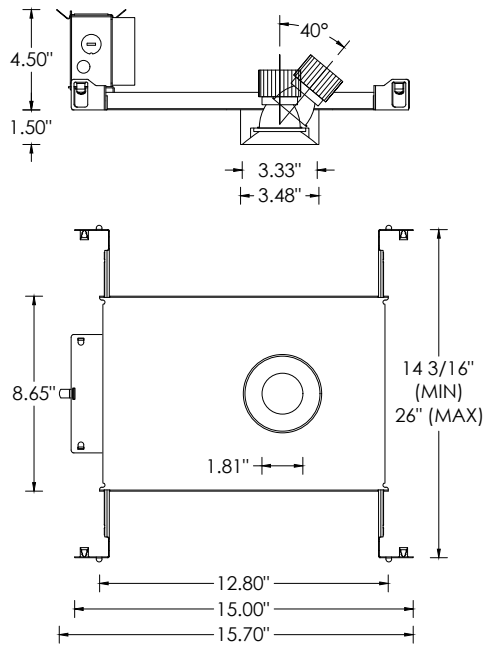
**SH - SHALLOW HOUSING (1500LM MAX)**  
(IC RATED AND CP RATED)



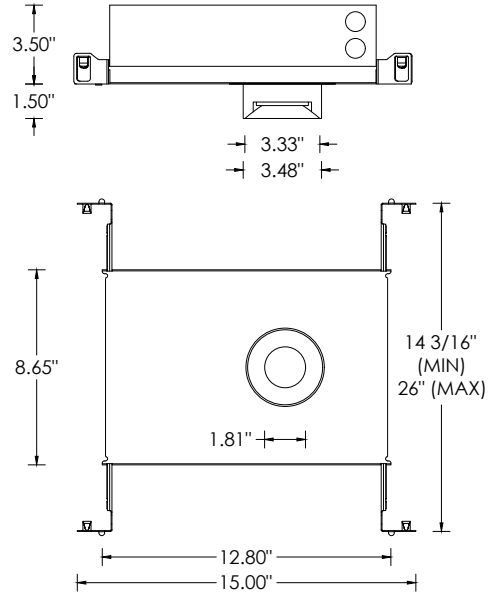
**NC- NEW CONSTRUCTION HOUSING (NON-IC AND CP RATED)**  
**IC - NEW CONSTRUCTION IC HOUSING (1500LM MAX)**



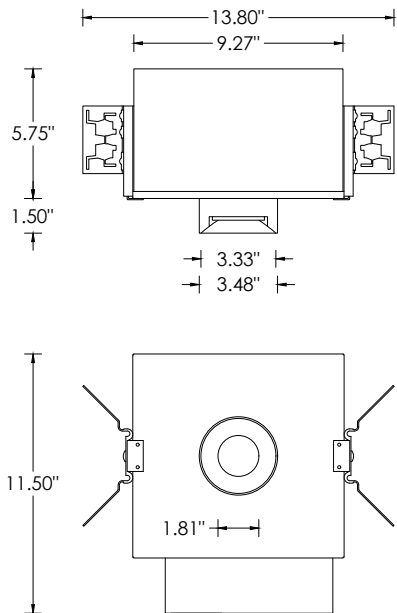
**NCF - NEW CONSTRUCTION FRAME (NON-IC)**



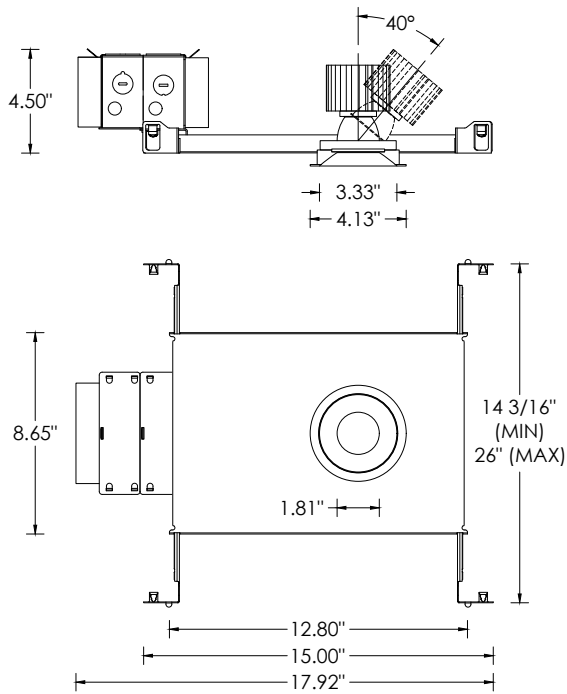
**SH - SHALLOW HOUSING (1500LM MAX)**  
(IC RATED AND CP RATED)



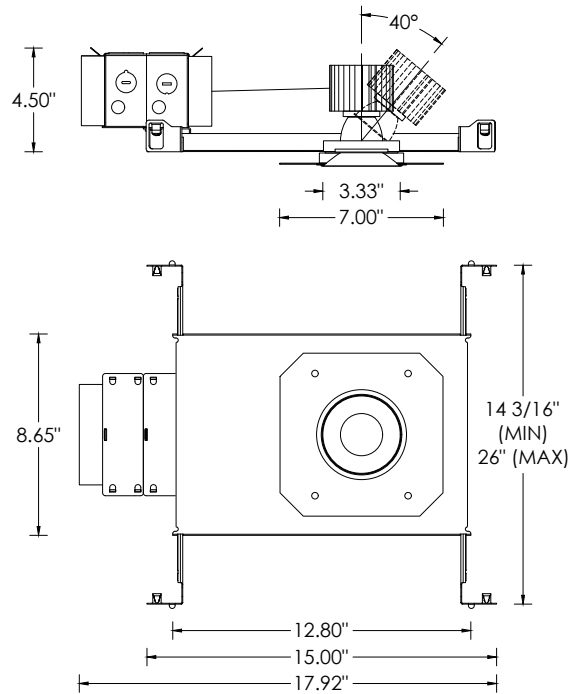
**NC- NEW CONSTRUCTION HOUSING (NON-IC AND CP RATED)**  
**IC - NEW CONSTRUCTION IC HOUSING (1500LM MAX)**



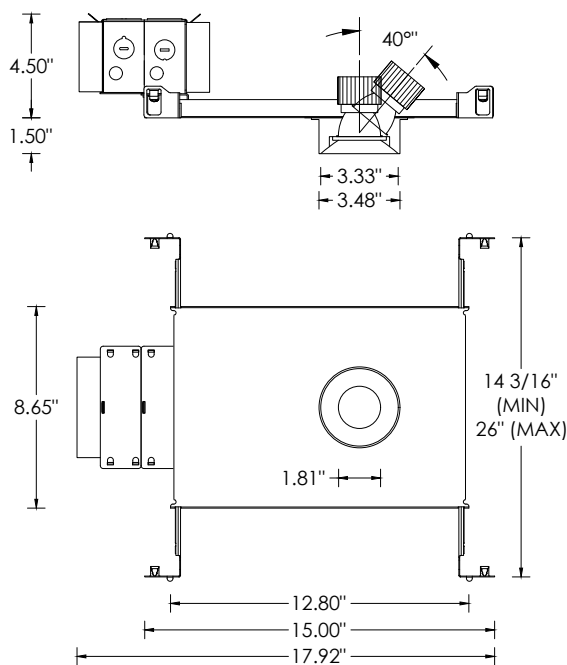
**TRIM**



**XTR - FLANGELESS**



**MWF - FLANGELESS MILLWORK**



**LUMEN OUTPUT REFERENCE CHART**

3G has upgraded our LED system and overall performance at no additional cost. We now offer 95+CRI as standard. All lumen outputs are delivered lumens. This new LED system is more efficient than our previous 80CRI, 90CRI, and 97CRI options. Please use these charts to cross-reference old lumen outputs with our new, 95+CRI lumen output options

**80CRI REFERENCE CHARTS**

MATCH THE GRADIENT SHADE FROM THE OLD LUMEN OUTPUT CHART TO THE NEW LUMEN OUTPUT OPTION

OLD 80CRI SPECS			
LUMEN OUTPUT	DELIVERED LUMENS	SYSTEM WATTS	EFFICACY (LPW)
1000	874	10.3	85
1500	1200	14.3	84
2200	1780	22.5	79
3000	2183	31.2	70

NEW 95+CRI SPECS			
LUMEN OUTPUT	DELIVERED LUMENS	SYSTEM WATTS	EFFICACY (LPW)
1000	1000	9.3	109
1500	1500	14.0	107
2000	2000	25.4	79
2500	2500	32.0	78

**90CRI REFERENCE CHARTS**

MATCH THE GRADIENT SHADE FROM THE OLD LUMEN OUTPUT CHART TO THE NEW LUMEN OUTPUT OPTION

OLD 90CRI SPECS			
LUMEN OUTPUT	DELIVERED LUMENS	SYSTEM WATTS	EFFICACY (LPW)
1000	769	10.3	75
1500	1056	14.3	74
2200	1566	22.5	70
3000	1921	31.2	62

NEW 95+CRI SPECS			
LUMEN OUTPUT	DELIVERED LUMENS	SYSTEM WATTS	EFFICACY (LPW)
1000	1000	9.3	109
1500	1500	14.0	107
2000	2000	25.4	79
2500	2500	32.0	78