

# 3G LIGHTING

## 3G-SDL45RM5

4.5" MINI MADISON CYLINDER  
7" AND 11" HEIGHT  
DYNAMIC WHITE



4.5" diameter high performance cylinders  
Companion to 3G's Madison product family  
Machined aluminum double gimbal. Adjustable and lockable  
1.95" Regressed LED source for enhanced glare control  
Extruded aluminum housing with powder coated finish  
Twist and lock construction and no visible hardware  
Dim to Warm and Tunable White LED options up to 2000lm (90+CRI)  
1% dimming standard with several integral driver options

**3GD 3GT**

<b>PROJECT:</b>		<b>TYPE:</b>	
<b>CATALOG#:</b>		<b>DATE:</b>	<b>QTY:</b>

CAT. NO	FIXTURE HEIGHT	LED SOURCE	LUMEN OUTPUT	CRI	BEAM ANGLE
<b>3G-SDL45RM5</b>	<b>7H</b> - 7" HEIGHT * <b>11H</b> - 11" HEIGHT	<b>DW</b> - DIM TO WARM (1800-3000K) <b>TW</b> - TUNABLE WHITE <sup>1</sup> (2700-6500K)	<b>08</b> - 800 LUMENS <b>12</b> - 1200 LUMENS <b>20</b> - 2000 LUMENS	<b>H90</b> - 90+ CRI	<b>20D</b> - 20° <sup>2</sup> <b>30D</b> - 30° <b>40D</b> - 40° <b>50D</b> - 50° <b>60D</b> - 60° <b>90D</b> - 90° *  *90D reflector supplied standard with lens
	<small>*7H available in Dim to Warm only. Maximum 1200lm output (DIM and LE only)</small>				

VOLTAGE	DRIVER	HOUSING & INSERT FINISH	GIMBAL FINISH
<b>UNV</b> - 120/277V <b>120</b> - 120V	<b>DIM</b> - 0-10V (100-1%) <b>LE</b> - PHASE DIM <sup>3</sup> (TRIAC/ELV, 100-1%) <b>D01</b> - 0-10V (100-0.1%) <sup>1</sup> <b>DALI</b> - DALI (100-1%) <sup>1,4</sup> <b>DHL2</b> - LUTRON HI-LUME (1% ECOSYSTEM) <b>DMX</b> - DMX (100-0%) <sup>1</sup>	<b>WH</b> - WHITE <b>BK</b> - BLACK <b>SV</b> - SILVER <b>CF</b> - CUSTOM RAL COLOR	<b>NG</b> - NATURAL ALUMINUM <b>WG</b> - WHITE <b>BG</b> - BLACK

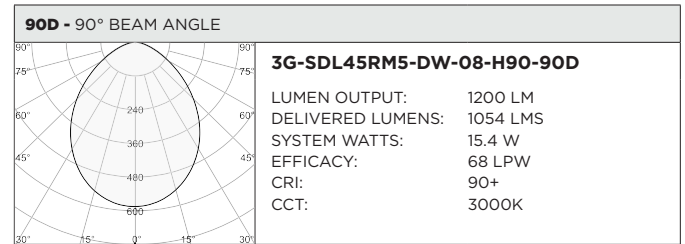
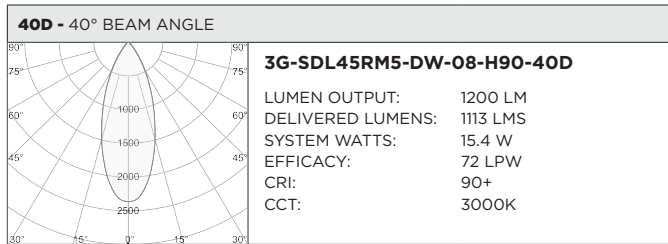
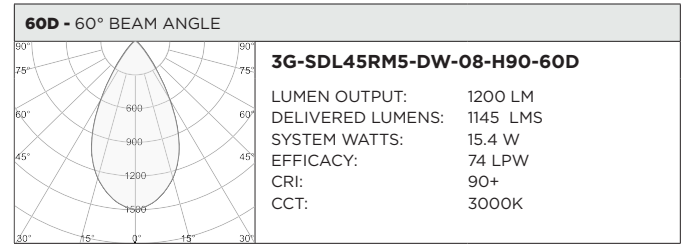
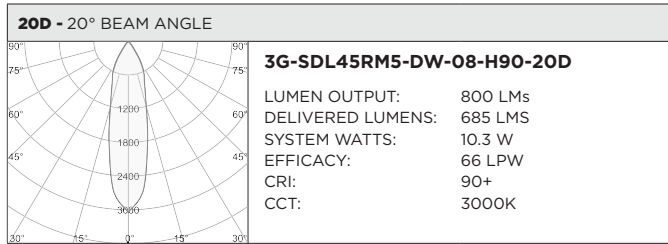
OPTIONS
<b>HXB</b> - HEXCELL LOUVER <b>LS</b> - LINEAR SPREAD LENS <b>SB</b> - SANDBLASTED LENS <b>SF</b> - SOFTENING LENS (SUPPLIED STANDARD) <b>CFW</b> - WHITE CONDUIT FEED CANOPY <b>CFB</b> - BLACK CONDUIT FEED CANOPY <b>CFS</b> - SILVER CONDUIT FEED CANOPY <b>EMR</b> - EMERGENCY BATTERY (REMOTE) <sup>5</sup>
<small>Maximum 1 optical accessory only Not available with 90D reflector option</small>

- <sup>1</sup> Tunable White option not available in 7" height. 11" model available with D01, DALI and DMX driver options only
- <sup>2</sup> 20D reflector available with 800lm option only
- <sup>3</sup> Phase dimming options available in 120V only
- <sup>4</sup> DALI-2 (Type 6) provided as standard. Consult factory for DALI Type 8 option
- <sup>5</sup> Fixture operates at 6500K in emergency mode. Emergency battery installed remotely by others. Not accessible through the inside of the fixture

**3GD** - Warm Dim  
**3GT** - Tunable White

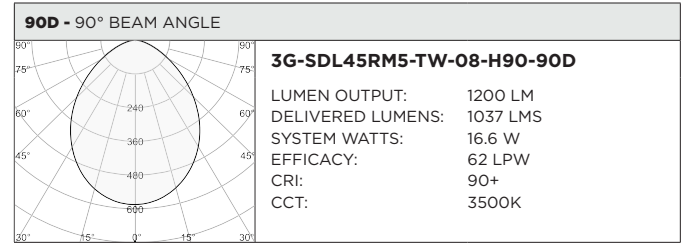
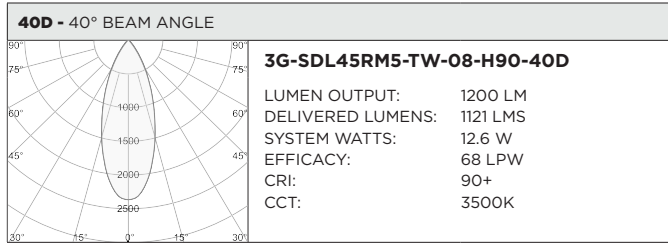
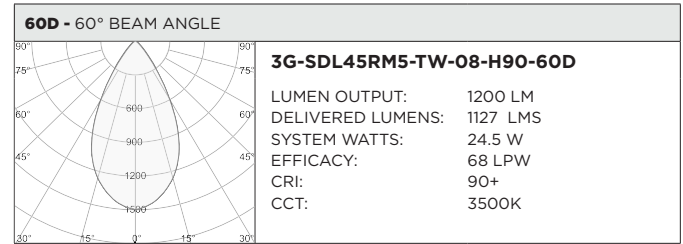
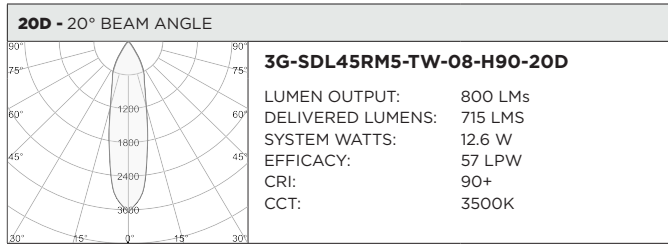
BASED ON 60° BEAM ANGLE AND 3000K SOURCE

LUMEN OUTPUT	90+ CRI		
	DELIVERED LUMENS	SYSTEM WATTS	EFFICACY (LPW)
<b>800LMs</b>	N/A	N/A	N/A
<b>1200LMs</b>	1145	15.4	74
<b>2000LMs</b>	1611	23.2	69



BASED ON 60° BEAM ANGLE

LUMEN OUTPUT	90+ CRI (2700K)			90+ CRI (3500K)			90+ CRI (6500K)		
	DELIVERED LUMENS	SYSTEM WATTS	EFFICACY (LPW)	DELIVERED LUMENS	SYSTEM WATTS	EFFICACY (LPW)	DELIVERED LUMENS	SYSTEM WATTS	EFFICACY (LPW)
<b>800LMs</b>	N/A	N/A	N/A	N/A	N/A	N/A	N/A	N/A	N/A
<b>1200LMs</b>	1076	16.6	65	1127	16.6	68	1266	16.6	76
<b>2000LMs</b>	1523	24.5	62	1558	24.5	64	1824	24.5	74



**HOUSING**

Extruded aluminum housing with powder coated finish  
Twist and lock construction with no visible hardware

**BEVELED INSERT**

4.5" machined aluminum trim insert feature 3G's Mini Madison double gimbal  
Solid aluminum 50mm double gimbal with dual axis adjustability (15°x15°)  
Each double gimbal can be locked in place

**OPTICS**

Proprietary anodized, aluminum reflectors are field replaceable (20° reflector not interchangeable)  
Available in 20°, 30°, 40°, 50°, 60° and 90°

**MOUNTING**

All hardware included for mounting to 4" octagonal junction box  
Conduit feed cut-out canopy option designed to mount to 4" octagonal junction box  
Twist and lock mechanism

**WARRANTY**

5 Year Warranty on LED and drivers  
Manufacturer 1 Year Warranty for defects in material and workmanship under normal use  
Ambient temperature at fixture should not exceed 25°C

**ELECTRICAL**

Standard 0-10V, constant current drivers with 100-1% dimming range and >0.9 power factor  
Standard 120/277V universal voltage drivers.  
120V Forward Phase/Reverse Phase driver option with 100-1% dimming range  
eldoLED 0-10V driver option available with 100-0.01% dimming range  
eldoLED DALI and Lutron EcoSystem driver options available with 100-1% dimming range  
DMX driver option available with 100-0% dimming range  
All drivers are integral and easily accessible through fixture aperture

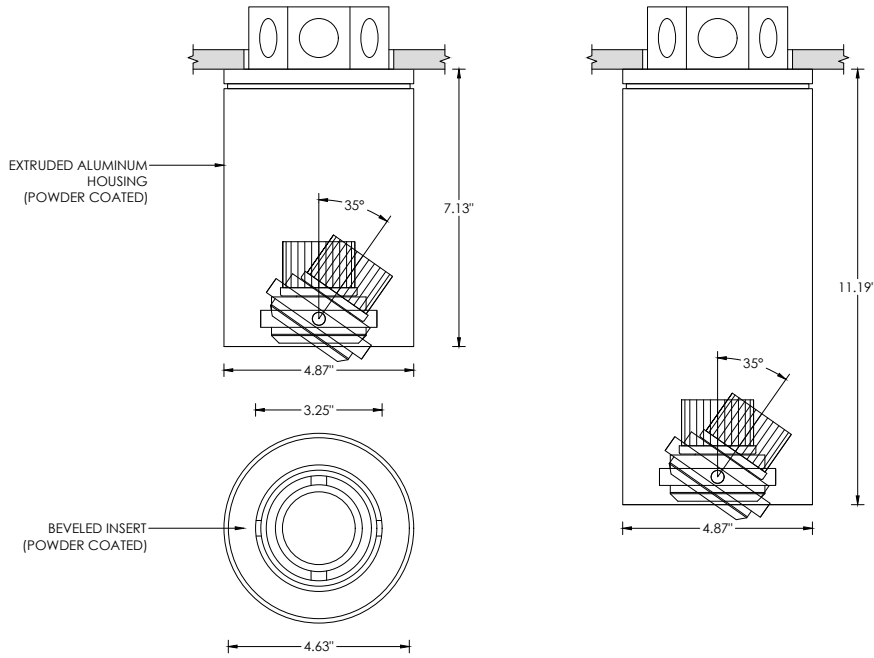
**LED SYSTEM**

Bridgelux LED module (field replaceable)  
Color consistency <3 SDCM  
Standard 90+ CRI  
Dim to Warm (1800K-3000K)  
Tunable White (2700K-6500K)  
L70 >50,000 hours  
5 Year Warranty

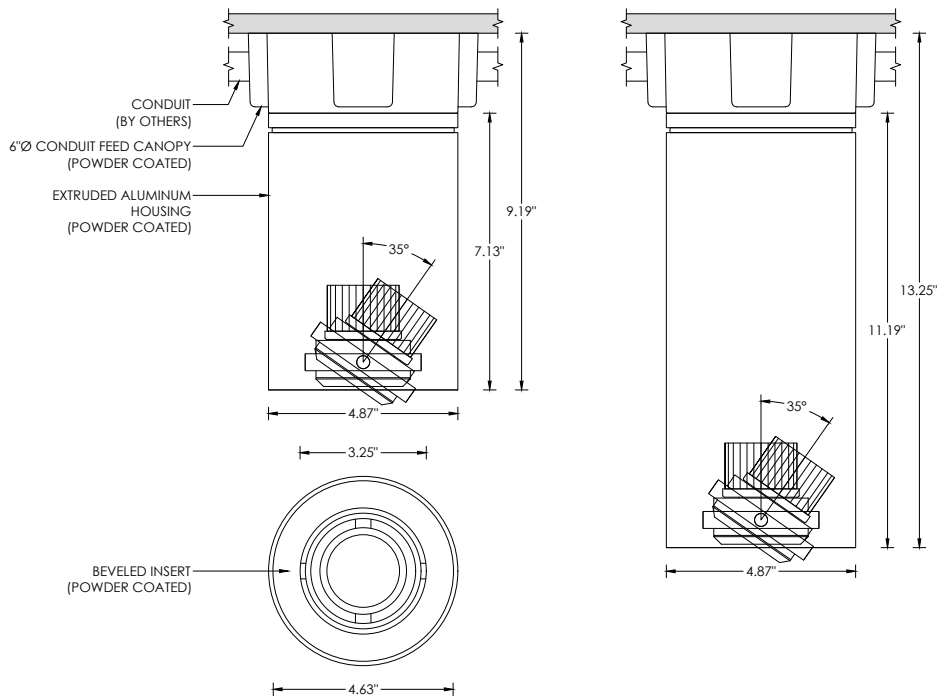
**LISTING**

ETL listed and conforms to UL1598 standard. Certified to CSA22.2 No.250.0.  
Rated for indoor dry or damp locations

**RECESSED 4" OCTAGONAL JUNCTION BOX BY OTHERS**  
STANDARD CANOPY MOUNT

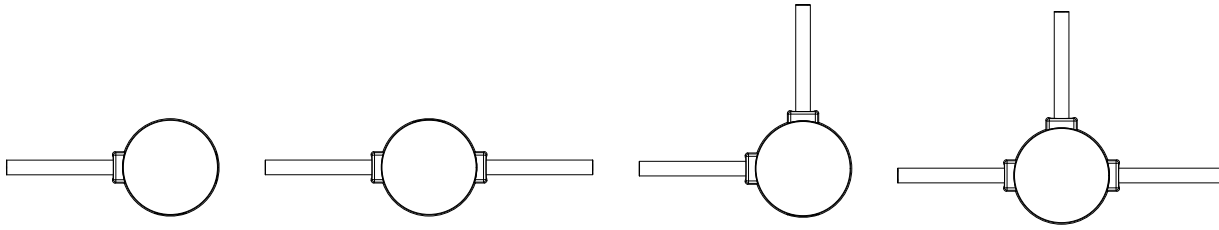


**SURFACE 4" OCTAGONAL X 1.5" DEEP JUNCTION BOX BY OTHERS**  
CONDUIT FEED CANOPY MOUNT (CFX OPTION)

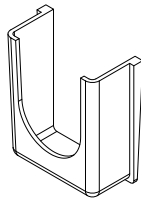


LUMEN OUTPUT	A
Up to 2000lm	15°

**CONDUIT FEED CANOPY MOUNTING OPTIONS**



CONDUIT COVER  
3 PROVIDED WITH EACH  
CONDUIT FEED CANOPY



BLANK  
2 PROVIDED WITH EACH  
CONDUIT FEED CANOPY

