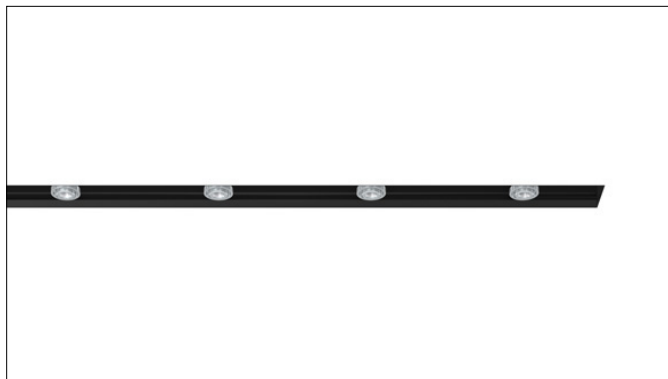


3G LIGHTING

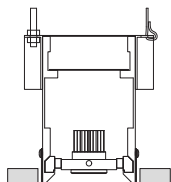
3G-38RMSL

3.8" RECESSED
MICRO MADISON SLOT

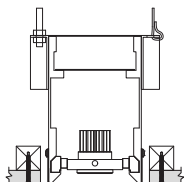
Solid aluminum double gimbal with dual axis adjustability
Individual fixture heads can be repositioned in either direction (up to 18")
Standard 95+ CRI LED system with performance up to 126 LPW
Delivered lumen range up to 1200lm at 95+ CRI
Regressed LED source for enhanced glare control
Companion to 3G's Madison product family



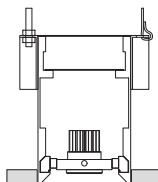
WT - TRIM



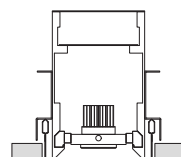
XTR - TRIMLESS



FX - FLANGELESS

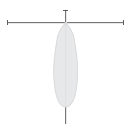


GCX - GRID CEILING

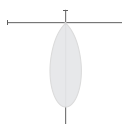


OPTICS

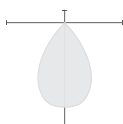
30D



45D



65D



PERFORMANCE

LUMEN OUTPUT	DELIVERED LUMENS	SYSTEM WATTS	EFFICACY (LPW)
700	700	5.9	120
1000	1000	8.4	119
1200	1200	10.4	116

BASED ON 95+ CRI, 3500K, 45D OPTIC WITH SOFTENING LENS
Lumen output and actual wattage may vary +/- 5%

PATTERNS

Specify pattern shape and overall dimensions as shown below. Patterns are connected with 12"x12" mitered corner sections (Fixture heads not available)
Please consult factory for custom patterns and shapes not shown below.

L-SHAPE	U-SHAPE	RECTANGLE/SQUARE
<p>Provide dimensions of AxB Example: L - 6'x8'</p>	<p>Provide dimensions of AxBxC Example: U - 8'x10'x6"</p>	<p>Provide dimensions of AxB Example: R - 10'x8'</p>

PROJECT:		TYPE:	
CATALOG#:		DATE:	QTY:

CAT. NO	LUMEN OUTPUT**	CRI	COLOR TEMP	BEAM ANGLE	VOLTAGE
3G-38RMSL	07 - 700 LUMENS 10 - 1000 LUMENS 12 - 1200 LUMENS <small>All lumen outputs are delivered lumens at 95+ CRI</small>	H95 - 95+ CRI	27K - 2700K 30K - 3000K 35K - 3500K 40K - 4000K	30D - 30° 45D - 45° 65D - 65°	UNV - 120/277V 120 - 120V

DRIVER	TRIM FLANGE	GIMBAL FINISH	HOUSING FINISH
DIM - 0-10V (100-1%) LE - PHASE DIM ³ <small>(TRIAC/ELV, 100-1%)</small> DO1 - 0-10V (100-0.1%) DALI - DALI (100-1%) ⁴	WT - WHITE TRIM (STANDARD) BT - BLACK TRIM XTR - TRIMLESS (MUD-IN DRYWALL) FX - FLANGELESS GCX - GRID CEILING * <small>(UNIVERSAL MOUNT)</small> <small>*Universal mounting brackets used for all grid ceiling types only. See mounting details</small>	NG - NATURAL ALUMINUM BG - BLACK GIMBAL WG - WHITE GIMBAL	BK - BLACK (STANDARD) WH - WHITE

OPTIONS	RUN TYPE	FIXTURE HEAD SPACING
SF - SOFTENING LENS * HXB - BLACK HEXCELL * LOUVER 2C - 2 CIRCUIT OPERATION 3C - 3 CIRCUIT OPERATION CP - CHICAGO PLENUM <small>*Maximum 1 optical accessory</small>	S - ____' (STRAIGHT) L - ____'x ____' (L-SHAPE) U - ____'x ____'x ____' (U-SHAPE) R - ____'x ____' (RECTANGLE/SQUARE) <small>Continuous runs available in 6" increments</small>	12" - 12" ON CENTER 18" - 18" ON CENTER 24" - 24" ON CENTER 36" - 36" ON CENTER 48" - 48" ON CENTER CUS - CUSTOM SPACING SPECIFY NUMBER OF DOWNLIGHTS " CUS(XX) "

¹ Forward Phase/Reverse Phase driver available in 120V only
² DALI-2 (Type 6) provided as standard

PERFORMANCE

LUMEN OUTPUT	DELIVERED LUMENS	SYSTEM WATTS	EFFICACY (LPW)
700	700	5.9	120
1000	1000	8.4	119
1200	1200	10.4	116

BASED ON 95+ CRI, 3500K, 45D OPTIC WITH SOFTENING LENS
Lumen output and actual wattage may vary +/- 5%

MULTIPLIERS

BEAM ANGLE	
30D	1.01
45D	1.11
65D	1.05

COLOR TEMP	
2700K	1.12
3000K	1.11
3500K	1.00
4000K	1.06

HOUSING

Housing constructed in extruded aluminum and cold rolled steel
Designed for continuous runs in various configurations
Maximum ceiling thickness of 1.75". Consult factory for modifications
Standard matte black powder coated housing finish
Trim flange with powder coated finish and 0.400" overlap
Trimless model features a perforated galvanized mudding flange

ADJUSTABILITY

Solid aluminum double gimbal with dual axis adjustability
Individual fixture heads can be repositioned within channel
Movement allowable up to 18" in either direction
Each double gimbal can be locked in place

OPTICS

Proprietary anodized, aluminum reflectors
Beam angle available in 30°, 45°, and 65°
Reflectors are field replaceable

LED SYSTEM

Standard 95+ CRI
Color consistency <2 SDCM
Available in 27K, 30K, 35K, and 40K
L90 > 50,000 hours

ELECTRICAL

Standard 0-10V, constant current drivers
100-1% dimming range and >0.9 power factor
Standard 120/277V universal voltage with several driver options
120V Forward Phase/Reverse Phase driver option (100-1%)
Integral drivers are easily accessible through luminaire aperture

MOUNTING

New construction housing suspended via 1/4" threaded rod or suspension cables (by others)
Trim fixture designed for use in drywall, wood, and other architectural ceiling materials
Trimless fixture designed for use in drywall, mud-in ceiling applications
Flangeless fixture designed for use in wood ceilings
Suitable for various grid ceiling applications (see mounting details)

LISTING

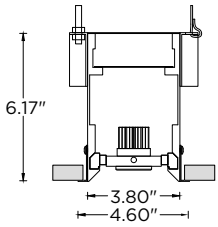
ETL listed and conforms to UL1598 standard
Certified to CSA22.2 No.250.0.
Rated for dry or damp locations

WARRANTY

5 year limited warranty
LED system rated for operation in ambient environments up to 25°C

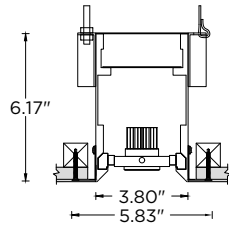
HARD CEILING

WT - TRIM



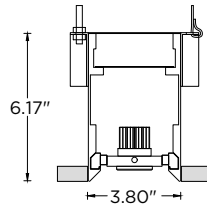
RECOMMENDED CEILING
CUT-OUT 4.30"

XTR - TRIMLESS



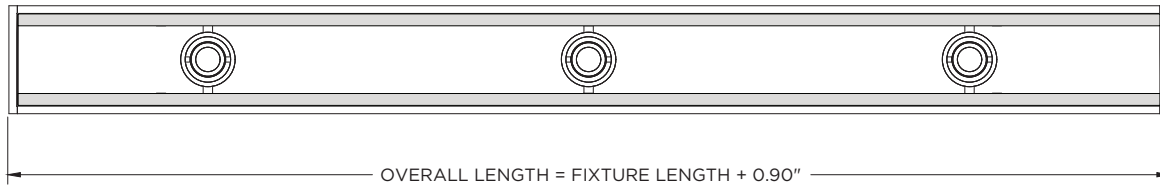
RECOMMENDED CEILING
CUT-OUT 4.20"

FX - FLANGELESS

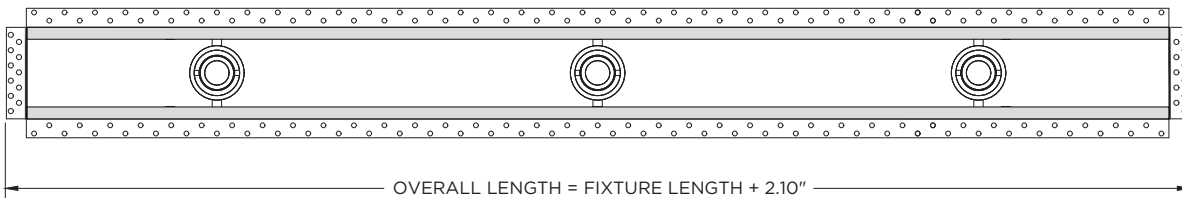


RECOMMENDED CEILING
CUT-OUT 3.90"

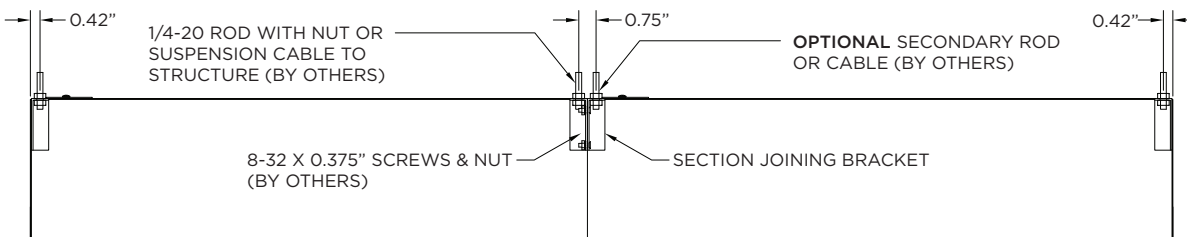
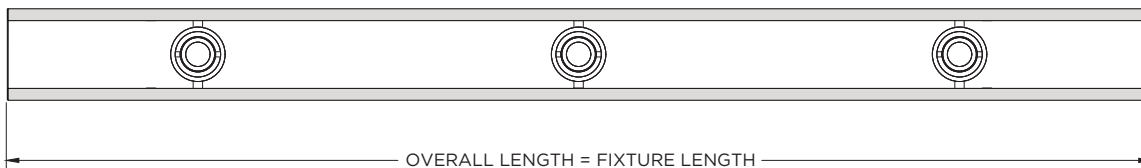
TRIM



TRIMLESS (MUD-IN DRYWALL)

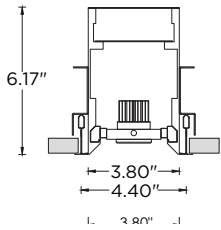


FLANGELESS

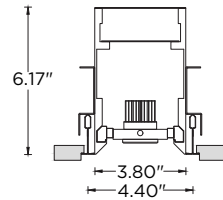


GRID CEILING

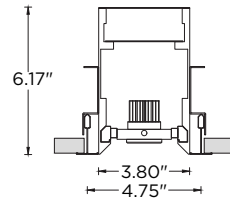
9L - 9/16" LAYIN



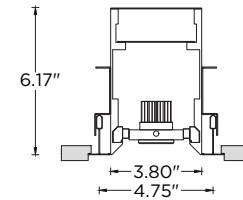
9TG - 9/16" TEGULAR



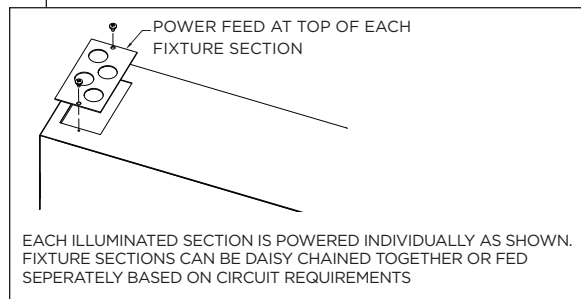
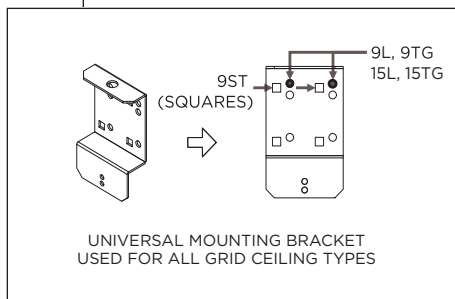
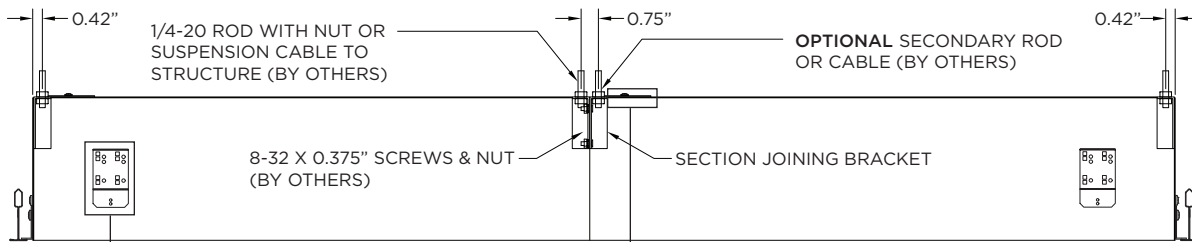
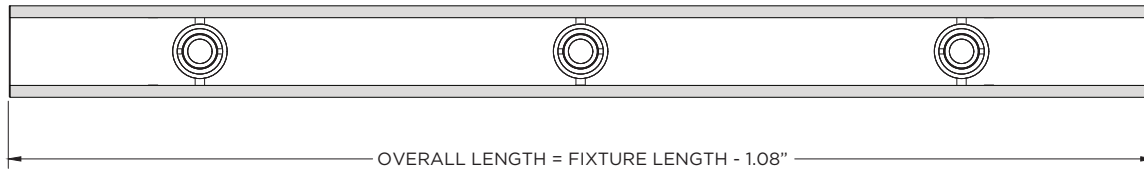
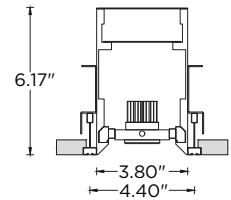
15L - 15/16" LAYIN



15TG - 15/16" TEGULAR



9ST - 9/16" SLOT TEE TEGULAR



GIMBAL ADJUSTABILITY

