

3G LIGHTING

3G-PDL33RM3

3.3" MICRO MADISON CYLINDER
7" AND 11" HEIGHT



3.3" diameter high performance adjustable cylinders
1.2" Regressed LED source with enhanced glare control
Companion to 3G's Madison product family
Machined aluminum trim features 3G's Micro Madison double gimbal
Extruded aluminum housing with powder coated finish
Lumen range up to 1000lm (80+, 90+, and 97+ CRI options)
1% dimming standard with integral driver options

PROJECT:				TYPE:			
CATALOG#:				DATE:		QTY:	
CAT. NO	FIXTURE HEIGHT	LUMEN OUTPUT	CRI	COLOR TEMP	BEAM ANGLE		
3G-PDL33RM3	7H - 7" HEIGHT * 11H - 11" HEIGHT	07 - 700 LUMENS * 10 - 1000 LUMENS	H95 - 95+ CRI	27K - 2700K 30K - 3000K 35K - 3500K 40K - 4000K	30D - 30° 45D - 45° 65D - 65°		
		*7H available up to 700lm All lumen outputs are delivered lumens at 95+ CRI					
VOLTAGE	DRIVER	HOUSING & INSERT FINISH	GIMBAL FINISH	CANOPY			
UNV - 120/277V 120 - 120V	DIM - 0-10V (100-1%) LE - PHASE DIM (TRIAC/ELV, 100-1%) *	WH - WHITE BK - BLACK SV - SILVER	WG - WHITE BG - BLACK NG - NATURAL ALUMINUM	CN - CANOPY (STANDARD) CF - CONDUIT CANOPY			
		*Phase dimming available in 120V only					
CANOPY FINISH	SUSPENSION TYPE	SUSPENSION LENGTH	OPTIONS				
WCF - WHITE (STANDARD) BCF - BLACK SCF - SILVER	WC - WHITE CABLE BC - BLACK CABLE RSW - WHITE RIGID STEM RSB - BLACK RIGID STEM RSS - SILVER RIGID STEM RSC - CUSTOM RAL STEM	C60 - 60" CABLE C120 - 120" CABLE S48 - 48" STEM S96 - 96" STEM	SF - SOFTENING LENS * HXB - BLACK HEXCELL LOUVER *				
		All suspension options are field cuttable		*Maximum 1 optical accessory			

PERFORMANCE

LUMEN OUTPUT	DELIVERED LUMENS	SYSTEM WATTS	EFFICACY (LPW)
700	700		
1000	1000		

BASED ON 95+ CRI, 3500K, 40D OPTIC
Lumen output and actual wattage may vary +/- 5%

MULTIPLIERS

BEAM ANGLE	
30D	
45D	
65D	

COLOR TEMP	
2700K	0.98
3000K	1.00
3500K	1.00
4000K	1.02

HOUSING

Extruded aluminum housing with powder coated finish

BEVELED INSERT

Machined aluminum insert with Micro Madison double gimbal
Solid aluminum, double gimbal with dual axis adjustability (35°x35°)

OPTICS

Proprietary anodized, aluminum reflectors
Beam angle available in 30°, 45° and 65°
Reflectors are field replaceable

ELECTRICAL

Standard 0-10V, constant current drivers
100-1% dimming range and >0.9 power factor
120V Forward Phase/Reverse Phase driver option (100-1%)
Integral drivers are easily accessible through luminaire aperture

LED SYSTEM

Standard 95+ CRI
Color consistency <2 SDCM
Available in 27K, 30K, 35K, and 40K
L90 > 50,000 hours

MOUNTING

1/2" diameter rigid stem option with sloped ceiling adapter (field cuttable)
Standard, 18-gauge, 5 conductor single circuit braided power feed cable (black and white finish)
All hardware included for mounting to 4" octagonal junction box
Canopy provided in white finish as standard
Conduit feed cut-out canopy option designed to mount to 4" octagonal junction box

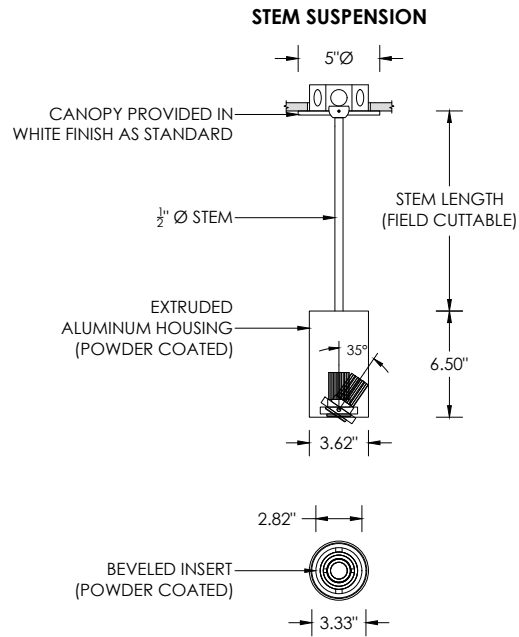
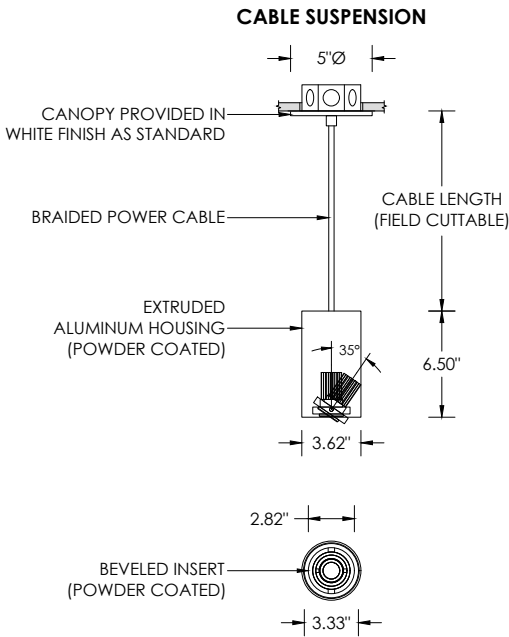
LISTING

ETL listed and conforms to UL1598 standard
Certified to CSA22.2 NO.250.0.
Rated for dry or damp locations

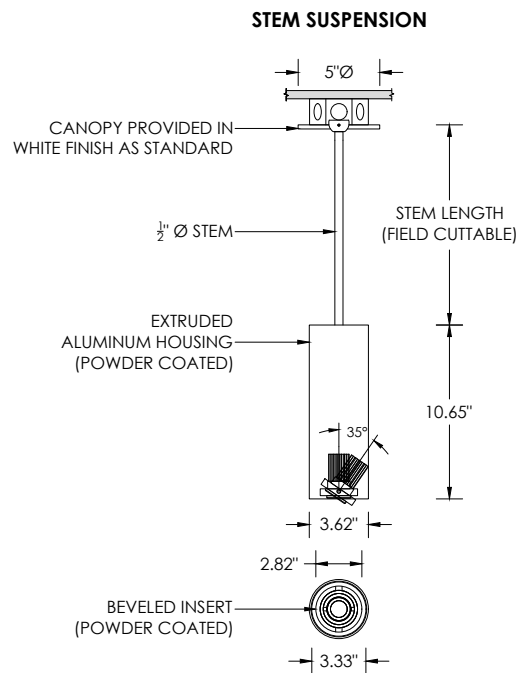
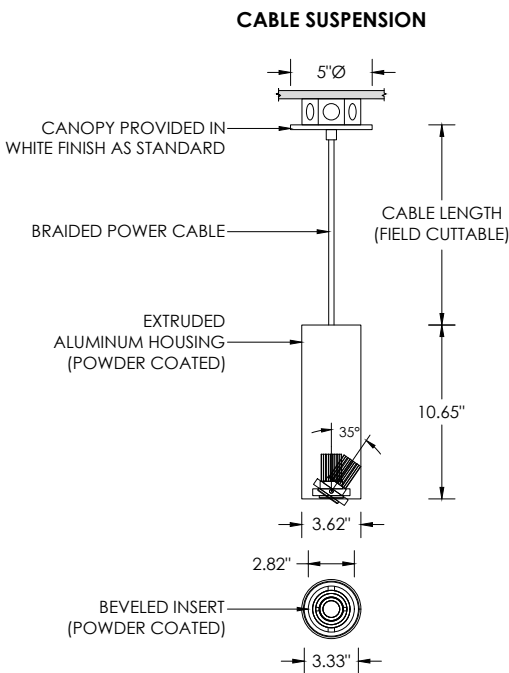
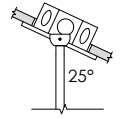
WARRANTY

5 year limited warranty
LED system rated for operation in ambient environments up to 25°C

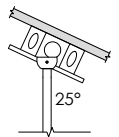
RECESSED 4" OCTAGONAL JUNCTION BOX BY OTHERS
STANDARD CANOPY MOUNT



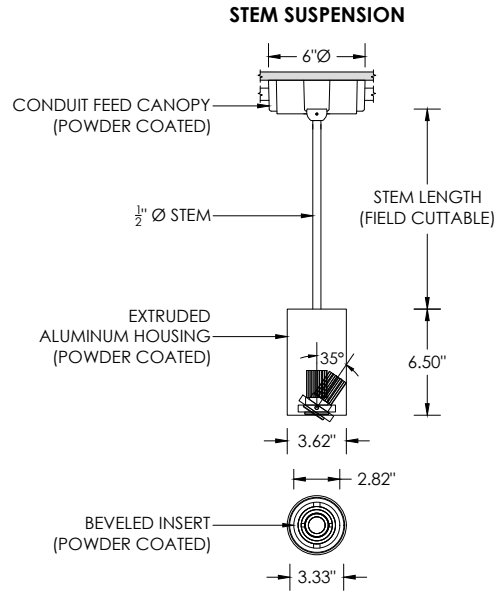
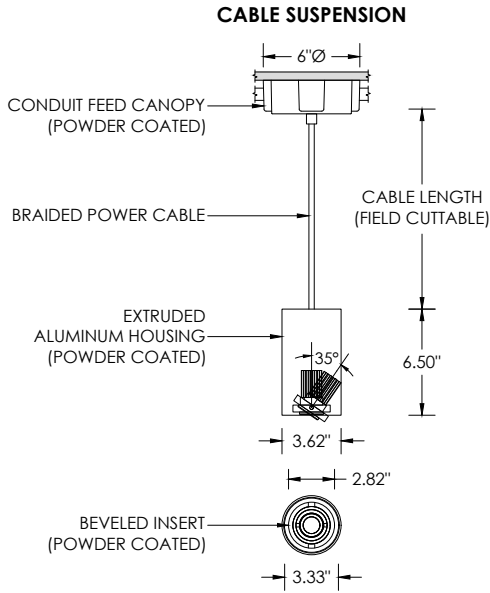
SUITABLE FOR SLOPED CEILING



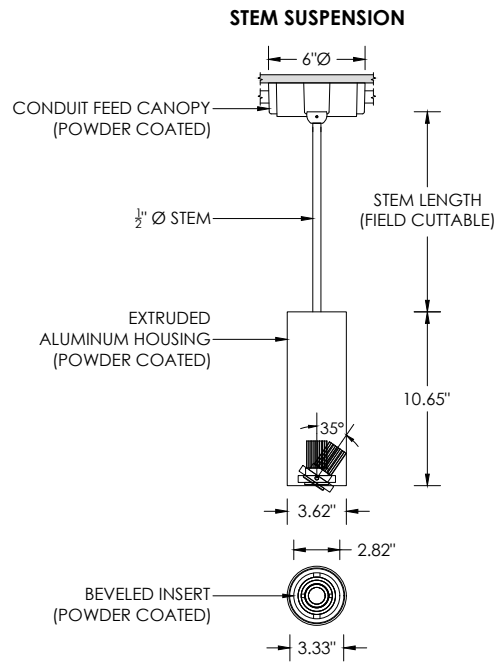
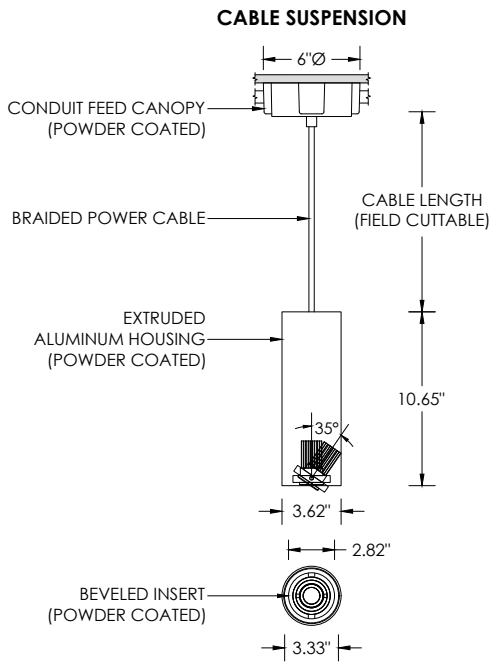
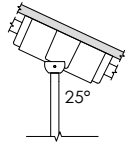
SUITABLE FOR SLOPED CEILING



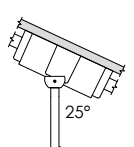
SURFACE 4" OCTAGONAL X 1.5" DEEP JUNCTION BOX BY OTHERS
CONDUIT FEED CANOPY MOUNT (CFX OPTION)



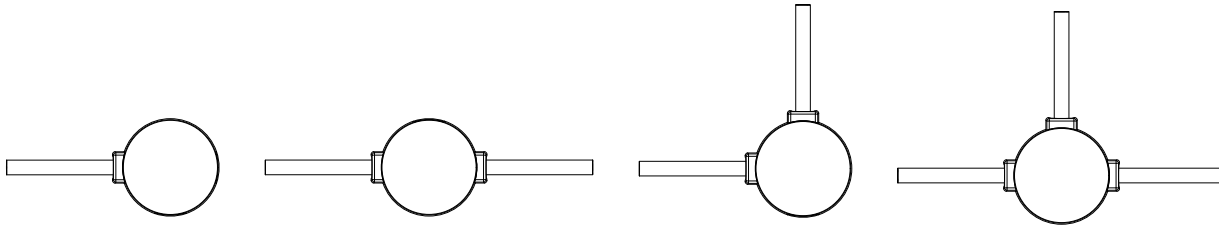
SUITABLE FOR SLOPED CEILING



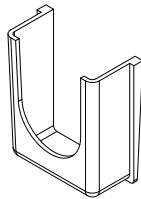
SUITABLE FOR SLOPED CEILING



CONDUIT FEED CANOPY MOUNTING OPTIONS



CONDUIT COVER
3 PROVIDED WITH EACH
CONDUIT FEED CANOPY



BLANK
2 PROVIDED WITH EACH
CONDUIT FEED CANOPY

