

# 3G LIGHTING

## 3G-PDL45RWW

4.5" WALL WASH CYLINDER  
7" AND 11" HEIGHT

4.5" diameter high performance wall wash cylinder  
Companion to 3G-DL45R series downlight family  
Extruded aluminum housing with powder coated finish  
Twist and lock construction and no visible hardware  
Regressed LED source for enhanced glare control  
Lumen range up to 2200lm (80+, 90+, and 97+ CRI options)  
1% dimming standard with several integral driver options



PROJECT:				TYPE:							
CATALOG#:				DATE:			QTY:				
CAT. NO		FIXTURE HEIGHT		LUMEN OUTPUT		CRI		COLOR TEMP		BEAM ANGLE	
3G-PDL45RWW		7H - 7" HEIGHT *		10 - 1000 LUMENS		S80 - 80+ CRI <sup>2</sup>		27K - 2700K		WW - WALL WASH	
		11H - 11" HEIGHT		15 - 1500 LUMENS		H90 - 90+ CRI		30K - 3000K			
				22 - 2200 LUMENS <sup>1</sup>		H97 - 97+ CRI <sup>2</sup>		35K - 3500K			
								40K - 4000K			
		*7H available in DIM & LE driver options only. Not available in 347V									
VOLTAGE			DRIVER			HOUSING FINISH			INSERT FINISH		
UNV - 120/277V 120 - 120V 347 - 347V <sup>3</sup>			DIM - 0-10V (100-1%) LE - PHASE DIM <sup>4</sup> (TRIAC/ELV, 100-1%) D01 - 0-10V (100-0.1%) DALI - DALI (100-1%) <sup>5</sup> DHL2 - LUTRON HI-LUME (1% ECOSYSTEM) DMX - DMX (100-0%)			WH - WHITE BK - BLACK SV - SILVER			WI - WHITE BI - BLACK SI - SILVER		
*Not available with 7H model											
CANOPY			SUSPENSION TYPE			SUSPENSION LENGTH					
WCN - WHITE (STANDARD) BCN - BLACK CFW - WHITE CONDUIT FEED CANOPY CFB - BLACK CONDUIT FEED CANOPY CFS - SILVER CONDUIT FEED CANOPY			WC - WHITE CABLE BC - BLACK CABLE CC - CLEAR CABLE RSW - WHITE RIGID STEM RSB - BLACK RIGID STEM RSS - SILVER RIGID STEM RSC - CUSTOM RAL STEM			C60 - 60" CABLE C120 - 120" CABLE S48 - 48" STEM S96 - 96" STEM					
						All suspension options are field cuttable					

<sup>1</sup> 2200lm only available with 11" height

<sup>2</sup> S80 not available in 27K. H97 available in 30K and 35K as standard

<sup>3</sup> 347 available in "DIM" 0-10V only (100-1%). Not available with 7H model

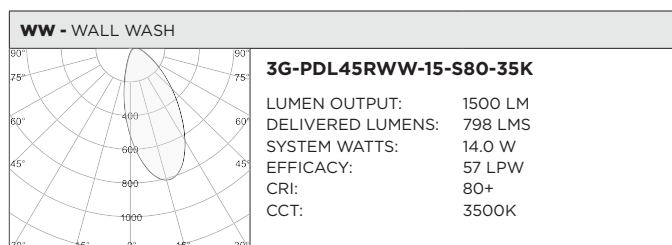
<sup>4</sup> Phase dimming options available in 120V only

<sup>5</sup> DALI-2 (Type 6) provided as standard. Consult factory for DALI Type 8 option

BASED ON WALL WASH OPTIC AND 3500K SOURCE

LUMEN OUTPUT	80+ CRI			90+ CRI			97+ CRI		
	DELIVERED LUMENS	SYSTEM WATTS	EFFICACY (LPW)	DELIVERED LUMENS	SYSTEM WATTS	EFFICACY (LPW)	DELIVERED LUMENS	SYSTEM WATTS	EFFICACY (LPW)
<b>1000LMs</b>	637	10.3	62	560	10.3	54	522	10.3	51
<b>1500LMs</b>	798	14.0	57	702	14.0	50	654	14.0	47
<b>2200LMs</b>	1224	22.0	56	1078	22.0	49	1004	22.0	46

LUMEN OUTPUT MULTIPLIER: 27K=0.94, 30K=0.97, 35K=1.00, 40K=1.01



## HOUSING

Extruded aluminum housing with powder coated finish  
Twist and lock construction with no visible hardware

## BEVELED INSERT

4.5" aperture with regressed LED source for enhanced glare control  
Cast aluminum insert with matte powder coated finish

## OPTICS

Proprietary wall wash optic  
Asymmetrical lens provides uniformity and smooth illumination across and down the wall

## LISTING

ETL listed and conforms to UL1598 standard. Certified to CSA22.2 No.250.0.  
Rated for indoor dry or damp locations

## WARRANTY

5 Year Warranty on LED and drivers  
Manufacturer 1 Year Warranty for defects in material and workmanship under normal use  
Ambient temperature at fixture should not exceed 25°C

## ELECTRICAL

Standard 0-10V, constant current drivers with 100-1% dimming range and >0.9 power factor  
120V Forward Phase/Reverse Phase driver option with 100-1% dimming range  
Standard 120/277V universal voltage with several driver options  
All drivers are integral and easily accessible through luminaire aperture

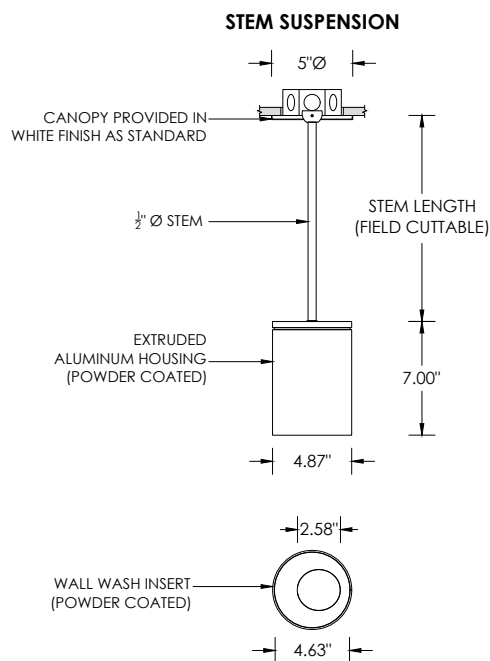
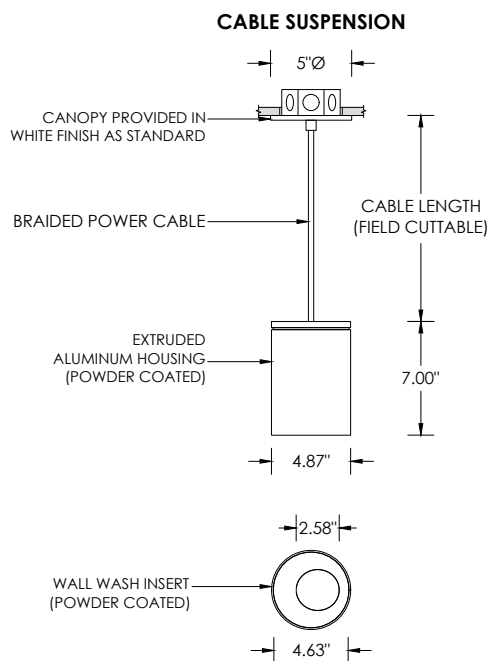
## LED SYSTEM

Citizen LED module (field replaceable)  
Color consistency <2 SDCM  
Standard (80+ CRI). Optional (90+ and 97+ CRI)  
Available in 27K, 30K, 35K, and 40K  
L90 >50,000 hours  
5 Year Warranty

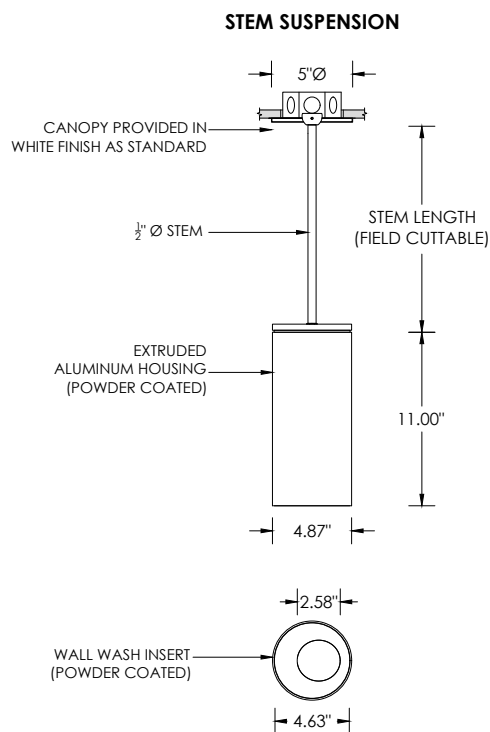
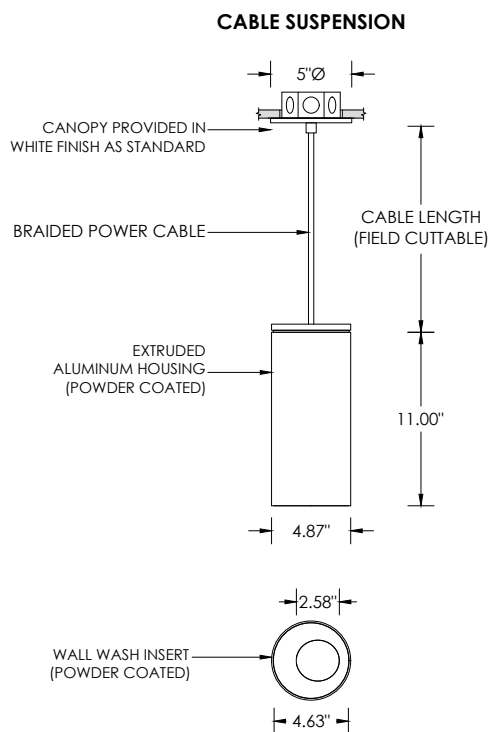
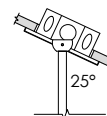
## MOUNTING

Standard, 18-gauge, 5 conductor single circuit braided power feed (black and white finish)  
1/2" diameter rigid stem option with sloped ceiling adapter (field cuttable)  
All hardware included for mounting to 4" octagonal junction box  
Canopy provided in white finish as standard  
Conduit feed cut-out canopy option designed to mount to 4" octagonal junction box

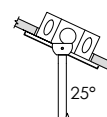
**RECESSED 4" OCTAGONAL JUNCTION BOX BY OTHERS**  
STANDARD CANOPY MOUNT



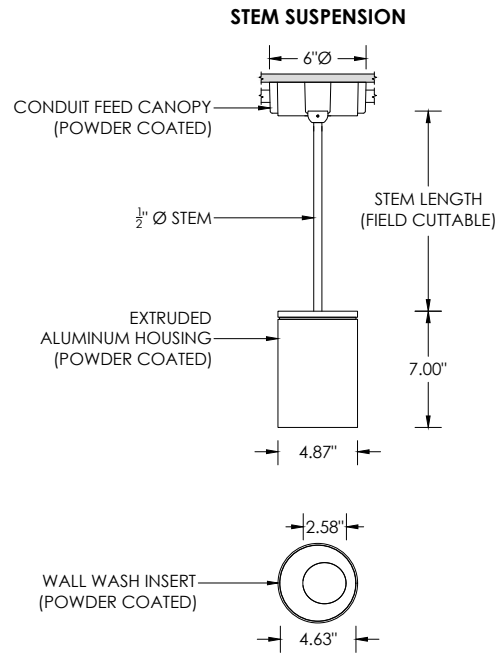
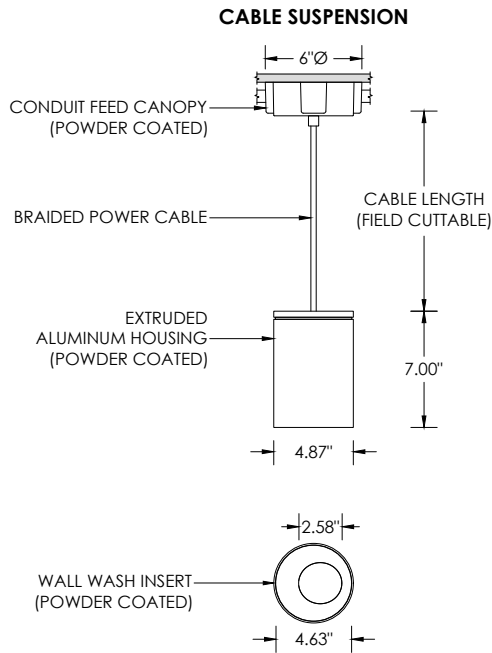
**SUITABLE FOR SLOPED CEILING**



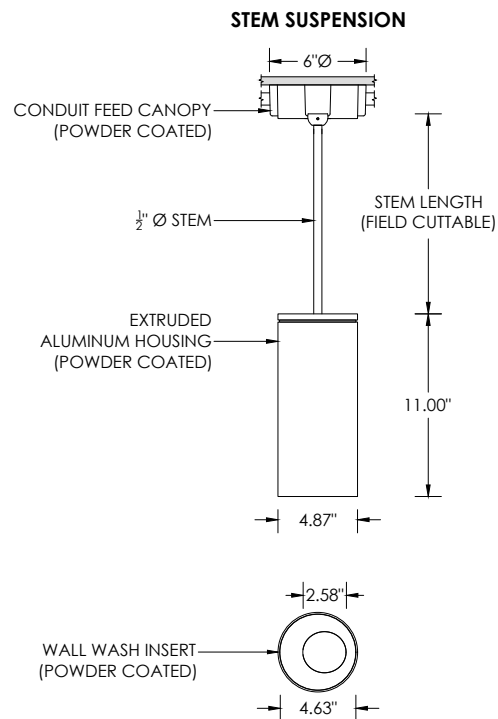
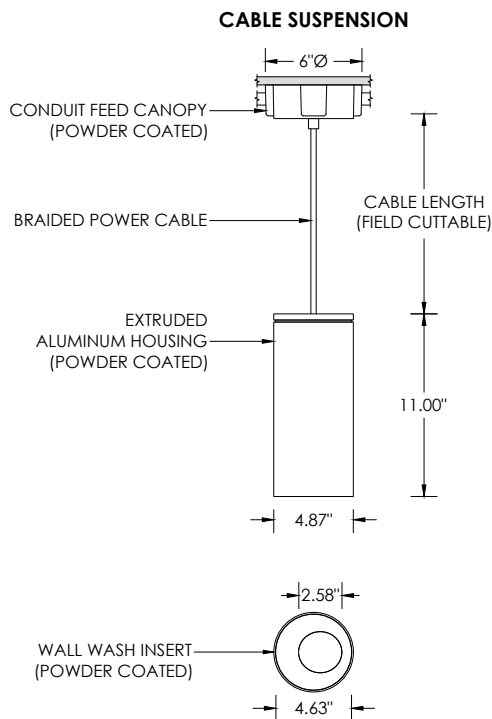
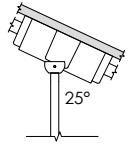
**SUITABLE FOR SLOPED CEILING**



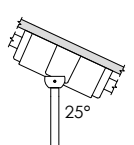
**SURFACE 4" OCTAGONAL X 1.5" DEEP JUNCTION BOX BY OTHERS**  
CONDUIT FEED CANOPY MOUNT (CFX OPTION)



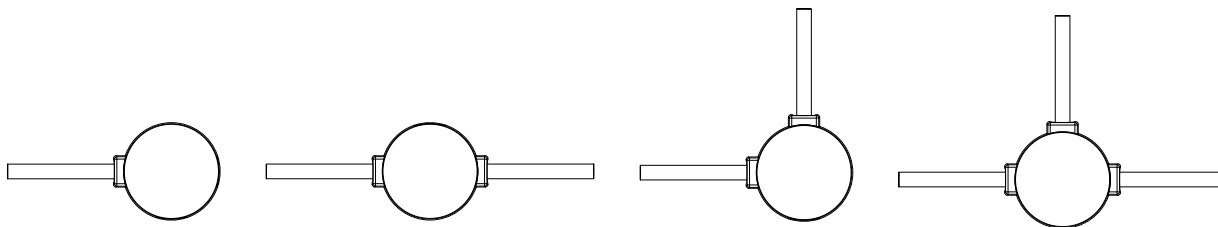
**SUITABLE FOR  
SLOPED CEILING**



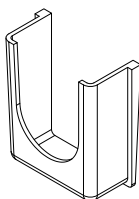
**SUITABLE FOR  
SLOPED CEILING**



**CONDUIT FEED CANOPY MOUNTING OPTIONS**



CONDUIT COVER  
3 PROVIDED WITH EACH  
CONDUIT FEED CANOPY



BLANK  
2 PROVIDED WITH EACH  
CONDUIT FEED CANOPY

