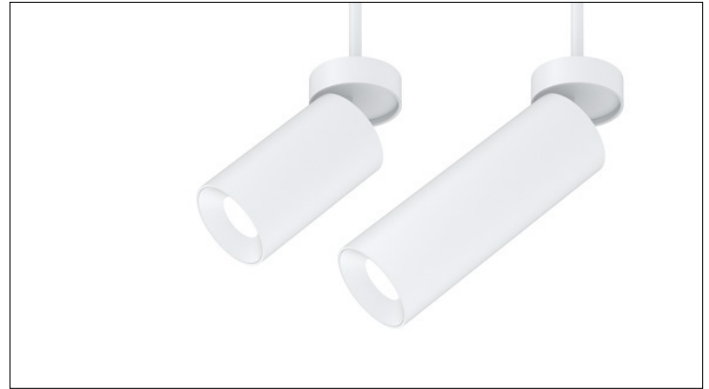


# 3G LIGHTING

## 3G-PDL33RA

3.3" ADJUSTABLE DOWNLIGHT  
CYLINDER 7" AND 11" HEIGHT

3.3" diameter, adjustable cylinder with upgraded performance  
Standard 95+ CRI LED system with performance up to 135 LPW  
Delivered lumen range up to 2000lm at 95+ CRI  
Regressed LED source with enhanced glare control  
20° to 90° beam angle options suitable for various applications  
Extruded aluminum construction with no visible hardware  
Companion to 3G's DL33R series downlight family



<b>PROJECT:</b>		<b>TYPE:</b>	
<b>CATALOG#:</b>		<b>DATE:</b>	<b>QTY:</b>

CAT. NO	FIXTURE HEIGHT	LUMEN OUTPUT	CRI	COLOR TEMP	BEAM ANGLE
<b>3G-PDL33RA</b>	<b>7H</b> - 7" HEIGHT * <b>11H</b> - 11" HEIGHT	<b>10</b> - 1000 LUMENS <b>13</b> - 1350 LUMENS <b>17</b> - 1750 LUMENS <b>20</b> - 2000 LUMENS	<b>H95</b> - 95+ CRI	<b>27K</b> - 2700K <b>30K</b> - 3000K <b>35K</b> - 3500K <b>40K</b> - 4000K	<b>20D</b> - 20° <sup>1</sup> <b>40D</b> - 40° <b>60D</b> - 60° <b>90D</b> - 90° *
	<small>*7H available up to 1350lm with integral driver (DIM &amp; LE options)</small>	<small>All lumen outputs are delivered lumens at 95+ CRI</small>			<small>*90D optic supplied with lens Not available with other lens options</small>

VOLTAGE	DRIVER	HOUSING FINISH	INSERT FINISH
<b>UNV</b> - 120/277V <b>120</b> - 120V <b>347</b> - 347V <sup>2</sup>	<b>DIM</b> - 0-10V (100-1%) <b>LE</b> - PHASE DIM <sup>3</sup> (TRIAC/ELV, 100-1%) <b>D01</b> - 0-10V (100-0.1%) <b>DALI</b> - DALI (100-1%) <sup>4</sup> <b>DMX</b> - DMX (100-0%) <b>DHL2</b> - LUTRON HI-LUME LDE1 (1% ECOSYSTEM) <b>RDIM</b> - REMOTE 0-10 (100-1%) <b>RLE</b> - REMOTE PHASE DIM (TRIAC/ELV, 100-1%)  Remote drivers supplied with enclosure	<b>WH</b> - WHITE <b>BK</b> - BLACK <b>SV</b> - SILVER <b>CF</b> - CUSTOM RAL COLOR	<b>WI</b> - WHITE <b>BI</b> - BLACK <b>SI</b> - SILVER <b>CI</b> - CUSTOM RAL COLOR

CANOPY	SUSPENSION TYPE	SUSPENSION LENGTH	OPTIONS
<b>WCN</b> - WHITE (STANDARD) <b>BCN</b> - BLACK <b>SCN</b> - SILVER <b>CFW</b> - WHITE CONDUIT CANOPY <b>CFB</b> - BLACK CONDUIT CANOPY <b>CFS</b> - SILVER CONDUIT CANOPY	<b>RSW</b> - WHITE RIGID STEM <b>RSB</b> - BLACK RIGID STEM <b>RSS</b> - SILVER RIGID STEM <b>RSC</b> - CUSTOM RAL STEM	<b>S48</b> - 48" STEM <b>S96</b> - 96" STEM  All suspension options are field cuttable	<b>SF</b> - SOFTENING LENS * (SUPPLIED STANDARD) <b>SB</b> - SANDBLASTED LENS <b>LS</b> - LINEAR SPREAD LENS <b>EMR</b> - REMOTE EMERGENCY <sup>5</sup> BATTERY  <small>*Softening lens not provided with 90D optic Maximum 1 optical accessory</small>

<sup>1</sup> 20D reflector available up to 1750lm  
<sup>2</sup> 347 available in "DIM" 0-10V and "RDIM" 0-10V only (100-1%). Not available with 7H model  
<sup>3</sup> Phase dimming options available in 120V only  
<sup>4</sup> DALI-2 (Type 6) provided as standard. Consult factory for DALI Type 8 option  
<sup>5</sup> Supplied with enclosure with Emergency Battery and driver. Installed remotely by others.  
Not accessible through fixture aperture

**\*\*** 3G has upgraded our LED system and overall performance at no additional cost. We now offer 95+CRI as standard. All lumen outputs are delivered lumens. This upgraded LED system is more efficient than our previous 80CRI, 90CRI, and 97CRI options. Please see the last page of this spec sheet to cross-reference old lumen outputs with our new, 95+CRI lumen output options

**PERFORMANCE**

LUMEN OUTPUT	DELIVERED LUMENS	SYSTEM WATTS	EFFICACY (LPW)
1000	1000	9.2	109
1350	1350	13.0	104
1750	1750	16.9	103
2000	2000	19.5	103

BASED ON 95+ CRI, 3500K, 40D OPTIC WITH SOFTENING LENS  
Lumen output and actual wattage may vary +/- 5%

**MULTIPLIERS**

BEAM ANGLE	
20D	1.24
40D	1.00
60D	0.97
90D	0.91

COLOR TEMP	
2700K	0.98
3000K	1.00
3500K	1.00
4000K	1.02

**HOUSING**

Extruded aluminum housing with powder coated finish  
Adjustable swivel mechanism with 0-90° tilt and 360° rotation

**BEVELED INSERT**

Cast aluminum beveled insert with matte powder coated finish  
3.3" aperture with regressed LED source for enhanced glare control

**OPTICS**

Proprietary anodized, aluminum reflectors  
Beam angle available in 20°, 40°, 60° and 90°  
Reflectors are field replaceable (20° reflector not interchangeable)  
Softening lens supplied standard

**ELECTRICAL**

Standard 0-10V, constant current drivers  
100-1% dimming range and >0.9 power factor  
Standard 120/277V universal voltage with several driver options  
120V Forward Phase/Reverse Phase driver option (100-1%)  
Integral drivers are easily accessible through luminaire aperture  
Remote drivers supplied with enclosure

**LED SYSTEM**

Standard 95+ CRI  
Color consistency <2 SDCM  
Available in 27K, 30K, 35K, and 40K  
L90 > 50,000 hours

**MOUNTING**

1/2" diameter rigid stem option with sloped ceiling adapter (field cuttable)  
All hardware included for mounting to 4" octagonal junction box  
Canopy provided in white finish as standard  
Conduit feed cut-out canopy option designed to mount to 4" octagonal junction box

**EMERGENCY**

7W output for 90 minutes (+/- 750lm at 95+ CRI). Title 24 Certified  
Remote emergency battery (not accessible through fixture aperture)  
Maximum remote mounting distance: 50ft (12AWG) or 25ft (14AWG)  
Caution: Emergency Battery utilizes more than one power source and servicing should be performed by qualified personnel

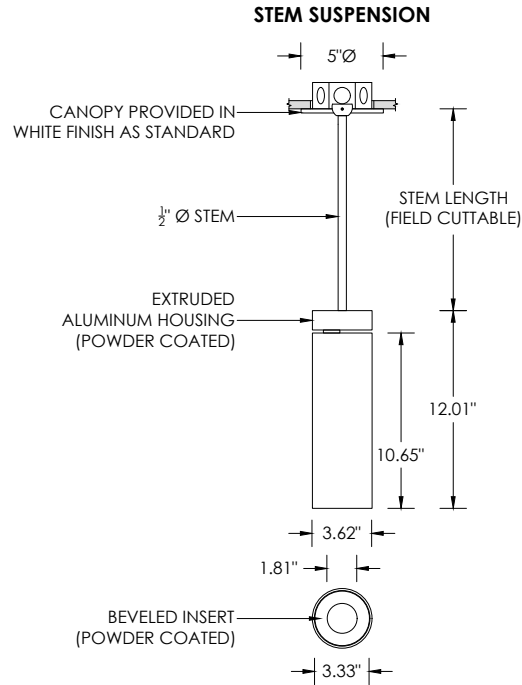
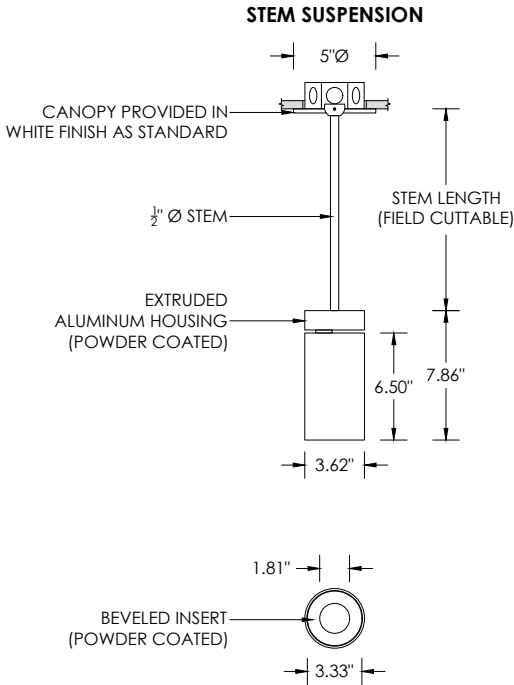
**LISTING**

ETL listed and conforms to UL1598 standard  
Certified to CSA22.2 NO.250.0.  
Rated for dry or damp locations

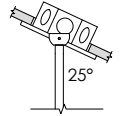
**WARRANTY**

5 year limited warranty  
LED system rated for operation in ambient environments up to 25°C

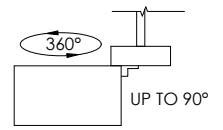
**RECESSED 4" OCTAGONAL JUNCTION BOX BY OTHERS**  
STANDARD CANOPY MOUNT



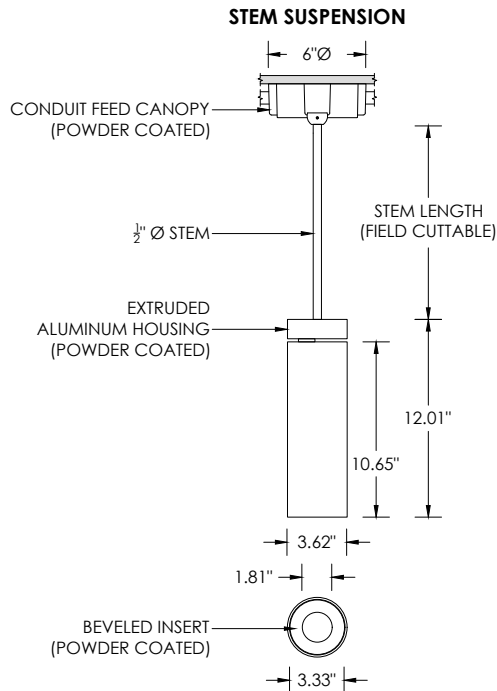
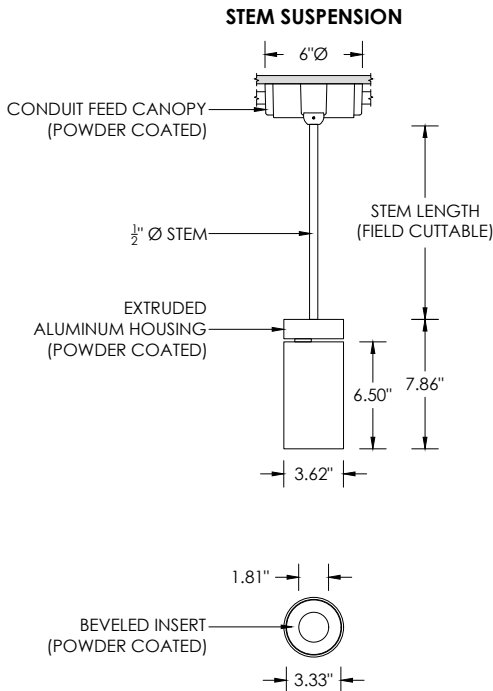
**SUITABLE FOR SLOPED CEILING**



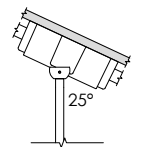
**ADJUSTABILITY**



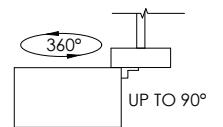
**SURFACE 4" OCTAGONAL X 1.5" DEEP JUNCTION BOX BY OTHERS**  
CONDUIT FEED CANOPY MOUNT (CFX OPTION)



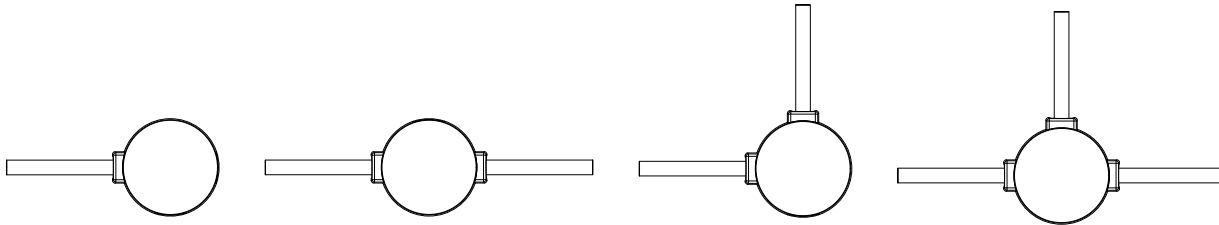
**SUITABLE FOR SLOPED CEILING**



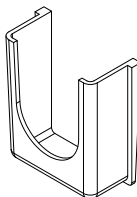
**ADJUSTABILITY**



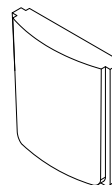
**CONDUIT FEED CANOPY MOUNTING OPTIONS**



CONDUIT COVER  
3 PROVIDED WITH EACH  
CONDUIT FEED CANOPY



BLANK  
2 PROVIDED WITH EACH  
CONDUIT FEED CANOPY



**LUMEN OUTPUT REFERENCE CHART**

3G has upgraded our LED system and overall performance at no additional cost. We now offer 95+CRI as standard. All lumen outputs are delivered lumens. This new LED system is more efficient than our previous 80CRI, 90CRI, and 97CRI options. Please use these charts to cross-reference old lumen outputs with our new, 95+CRI lumen output options

**80CRI REFERENCE CHARTS**

MATCH THE GRADIENT SHADE FROM THE OLD LUMEN OUTPUT CHART TO THE NEW LUMEN OUTPUT OPTION

OLD 80CRI SPECS			
LUMEN OUTPUT	DELIVERED LUMENS	SYSTEM WATTS	EFFICACY (LPW)
1000	1080	10.3	105
1500	1408	13.9	101
2200	2132	21.9	97

NEW 95+CRI SPECS			
LUMEN OUTPUT	DELIVERED LUMENS	SYSTEM WATTS	EFFICACY (LPW)
1000	1000	9.2	109
1350	1350	13.0	104
1750	1750	16.9	103
2000	2000	19.5	103

**90CRI REFERENCE CHARTS**

MATCH THE GRADIENT SHADE FROM THE OLD LUMEN OUTPUT CHART TO THE NEW LUMEN OUTPUT OPTION

OLD 90CRI SPECS			
LUMEN OUTPUT	DELIVERED LUMENS	SYSTEM WATTS	EFFICACY (LPW)
1000	950	10.3	92
1500	1239	13.9	89
2200	1876	21.9	86

NEW 95+CRI SPECS			
LUMEN OUTPUT	DELIVERED LUMENS	SYSTEM WATTS	EFFICACY (LPW)
1000	1000	9.2	109
1350	1350	13.0	104
1750	1750	16.9	103
2000	2000	19.5	103