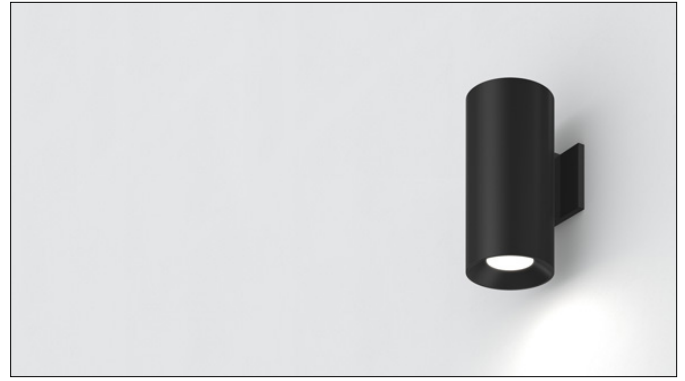


3G LIGHTING

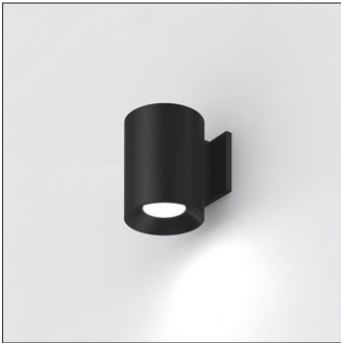
3G-WDL45RF

4.5" WALL CYLINDER
DIRECT OR INDIRECT
7" AND 11" HEIGHT

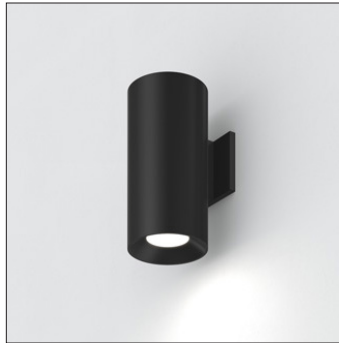
4.5" high performance wall mounted downlight cylinder
Standard 95+ CRI LED system with up to 118 LPW
Delivered lumen range up to 2500lm at 95+ CRI
Available with direct or indirect distribution
Extruded aluminum housing with powder coated finish
Regressed LED source for enhanced glare control
Companion to 3G-DL45R series downlight family



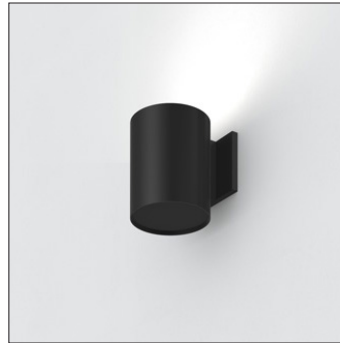
DIRECT - 7IN



DIRECT - 11IN



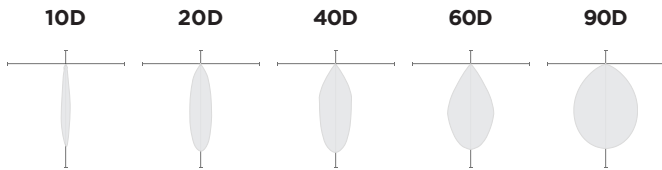
INDIRECT - 7IN



INDIRECT - 11IN



OPTICS

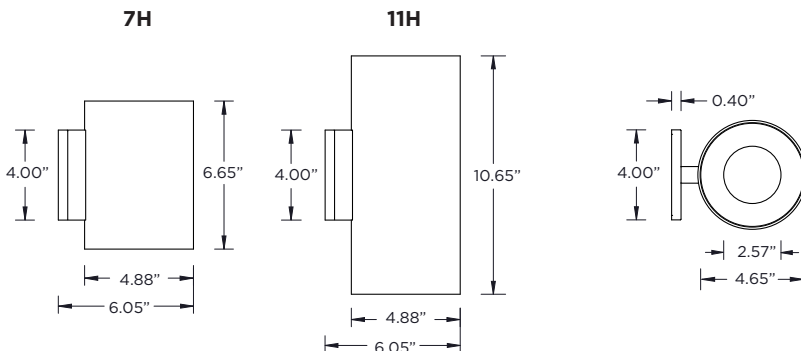


PERFORMANCE

LUMEN OUTPUT	DELIVERED LUMENS	SYSTEM WATTS	EFFICACY (LPW)
1000	1000	8.5	118
1500	1500	13.1	115
2000	2000	17.8	113
2500	2500	22.7	110

BASED ON 95+ CRI, 3500K, 20D OPTIC WITH SOFTENING LENS
Lumen output and actual wattage may vary +/- 5%

DIMENSIONS



PROJECT:		TYPE:	
CATALOG#:		DATE:	QTY:

CAT. NO	DISTRIBUTION	FIXTURE HEIGHT	LUMEN OUTPUT (DELIVERED LUMENS)
3G-WDL45RF	D - DIRECT I - INDIRECT	7H - 7" HEIGHT * 11H - 11" HEIGHT *7H available up to 2000lm (DIM & LE options)	10 - 1000 LUMENS 15 - 1500 LUMENS 20 - 2000 LUMENS 25 - 2500 LUMENS All lumen outputs are delivered lumens at 95+ CRI
CRI	COLOR TEMP	BEAM ANGLE	VOLTAGE
H95 - 95+ CRI	27K - 2700K 30K - 3000K 35K - 3500K 40K - 4000K	10D - 10° ¹ 20D - 20° 40D - 40° 60D - 60° 90D - 90° 90D optic supplied with lens Not available with other lens options	UNV - 120/277V 120 - 120V 347 - 347V ²
DRIVER	HOUSING FINISH	INSERT FINISH	OPTIONS
DIM - 0-10V (100-1%) LE - PHASE DIM ³ (TRIAC/ELV, 100-1%) D01 - 0-10V (100-0.1%) DALI - DALI (100-1%) ⁴ DHL2 - LUTRON HI-LUME ⁵ (1% ECOSYSTEM) DMX - DMX (100-0%) ⁵	WH - WHITE BK - BLACK SV - SILVER CF - CUSTOM COLOR	WI - WHITE BI - BLACK SI - SILVER CI - CUSTOM COLOR	SF - SOFTENING LENS * (SUPPLIED STANDARD) LS - LINEAR SPREAD LENS SB - SANDBLASTED LENS *Softening lens not provided with 90D optic Maximum 1 optical accessory

¹ 10D optic available up to 2000lm
² 347 available in "DIM" 0-10V. Not available with 7H model
³ Phase dimming options available in 120V only
⁴ DALI-2 (Type 6) provided as standard. Consult factory for DALI Type 8 option
⁵ DHL2, and DMX available with 11" model only

PERFORMANCE

LUMEN OUTPUT	DELIVERED LUMENS	SYSTEM WATTS	EFFICACY (LPW)
1000	1000	8.5	118
1500	1500	13.1	115
2000	2000	17.8	113
2500	2500	22.7	110

BASED ON 95+ CRI, 3500K, 20D OPTIC WITH SOFTENING LENS
Lumen output and actual wattage may vary +/- 5%

MULTIPLIERS

BEAM ANGLE		COLOR TEMP	
10D	0.97	2700K	0.98
20D	1.00	3000K	1.00
40D	0.94	3500K	1.00
60D	0.95	4000K	1.02
90D	0.90		

HOUSING

Extruded aluminum housing with powder coated finish

BEVELED INSERT

4.5" aperture with regressed LED source for enhanced glare control
Cast aluminum insert with matte powder coated finish

OPTICS

Proprietary anodized, aluminum reflectors
Available in 10°, 20°, 40°, 60° and 90°
Reflectors are field replaceable (10° reflector not interchangeable)
Softening lens supplied standard

LISTING

ETL listed and conforms to UL1598 standard
Certified to CSA22.2 NO.250.0.
Rated for indoor dry or damp locations

WARRANTY

5 year limited warranty
LED system rated for operation in ambient environments up to 25°C

ELECTRICAL

Standard 0-10V, constant current drivers with 100-1% dimming range and >0.9 power factor
Standard 120/277V universal voltage with several driver options
Integral drivers are easily accessible through fixture aperture
7" models include 0-10V drivers that operate only with dimmers that sink current (not designed for source current)
Compatible 0-10V dimmers for all 7" height models listed below:
Lutron NFTV, **Lutron** DVTV , **Lutron** DVSTV, **Lutron** VIVE
RMJS-8TN, **Leviton** IP710-DLZ, **Philips** SR1200ZTUNV,
Cooper SF10P

LED SYSTEM

Standard 95+ CRI
Color consistency <2 SDCM
Available in 27K, 30K, 35K, and 40K
L90 > 50,000 hours

MOUNTING

Square machined aluminum canopy with powder coated finish
Bracket and hardware mount to standard 4" octagonal junction box
Fixture weight: +/- 4.25 lbs