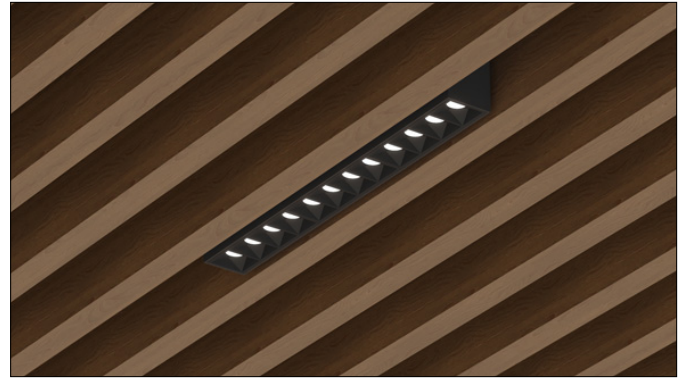


# 3G LIGHTING

## 3G-RMZ12-SC

12" ZOIE DOWNLIGHT  
SPECIALTY CEILINGS

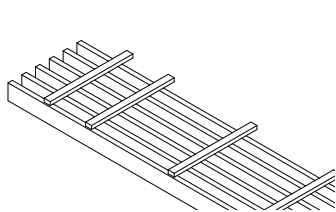
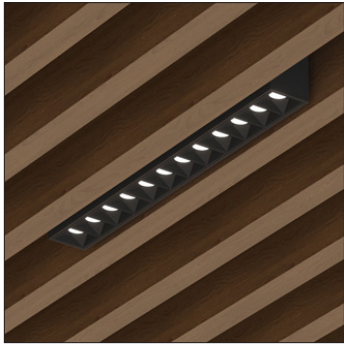
12" linear downlight designed for integration with specialty ceilings  
 Regressed LED source with enhanced glare control and UGR <16  
 Standard 90+ CRI LED system with performance up to 122 LPW  
 Delivered lumen range up to 2500lm at 90+ CRI  
 15° to 55° beam angle options suitable for various applications  
 Matte black and matte white multi faceted louvers  
 Companion to 3G's Zoie product family



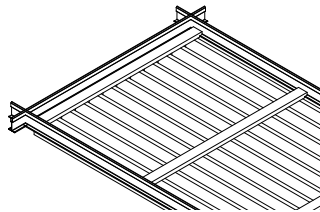
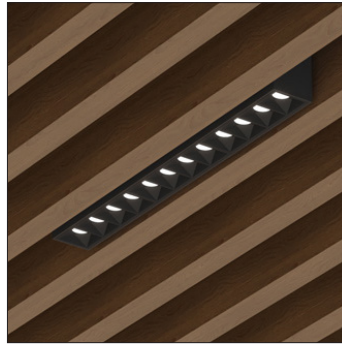
Compatible with various architectural ceiling systems

### CEILING TYPES

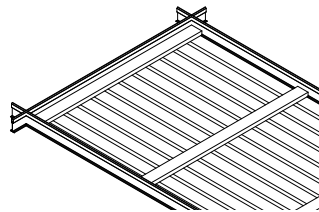
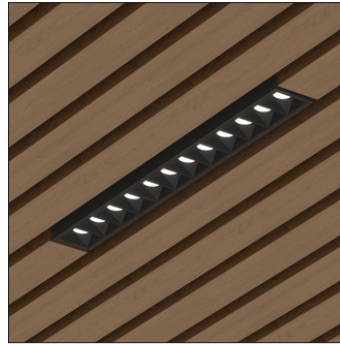
#### GRILLE



#### GRILLE TEGULAR

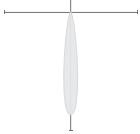


#### LINEAR TEGULAR

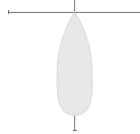


### OPTICS

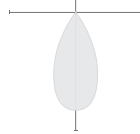
15D



35D



55D



### PERFORMANCE

LUMEN OUTPUT	DELIVERED LUMENS	SYSTEM WATTS	EFFICACY (LPW)
1000	1000	8.8	114
1500	1500	13.3	112
2000	2000	19.4	103
2500	2500	24.7	101

BASED ON 90+ CRI, 3500K AND 35D OPTIC  
 Lumen output and actual wattage may vary +/- 5%

### STANDARD FINISHES



BLACK COLLAR FINISH  
 BLACK LOUVER FINISH

<b>PROJECT:</b>		<b>TYPE:</b>	
-----------------	--	--------------	--

<b>CATALOG#:</b>		<b>DATE:</b>		<b>QTY:</b>	
------------------	--	--------------	--	-------------	--

CAT. NO	LUMEN OUTPUT	CRI	COLOR TEMP	BEAM ANGLE	VOLTAGE
<b>3G-RMZ12-SC</b>	<b>10</b> - 1000 LUMENS <b>15</b> - 1500 LUMENS <b>20</b> - 2000 LUMENS <b>25</b> - 2500 LUMENS  <small>*All lumen outputs are delivered lumens at 90+ CRI</small>	<b>H90</b> - 90+ CRI	<b>27K</b> - 2700K <b>30K</b> - 3000K <b>35K</b> - 3500K <b>40K</b> - 4000K	<b>15D</b> - 15° <b>35D</b> - 35° <b>55D</b> - 55°	<b>UNV</b> - 120/277V <b>120</b> - 120V <b>347</b> - 347V <sup>1</sup>

DRIVER	COLLAR FINISH	LOUVER FINISH	HOUSING TYPE
<b>DIM</b> - 0-10V (100-1%) <b>LE</b> - PHASE DIM (TRIAC/ELV, 100-1%) <sup>2</sup> <b>DO1</b> - 0-10V (100-0.1%) <b>DALI</b> - DALI (100-1%) <sup>3</sup> <b>DHL2</b> - LUTRON LDE1 (1% ECOSYSTEM) <sup>4</sup> <b>DMX</b> - DMX (100-0%)	<b>BK</b> - BLACK <b>WH</b> - WHITE	<b>BLV</b> - BLACK <b>WLV</b> - WHITE	<b>NC</b> - NEW CONSTRUCTION HOUSING <sup>5</sup> <b>SH</b> - SHALLOW HOUSING <sup>6</sup>

CEILING TYPE	OPTIONS
<b>GR</b> - GRILLE <b>GTG</b> - GRILLE TEGULAR <b>LTG</b> - LINEAR TEGULAR	<b>CP</b> - CHICAGO PLENUM <sup>7</sup>

<sup>1</sup> 347 available in "DIM" 0-10V only (100-1%)  
<sup>2</sup> Phase dimming options available in 120V only  
<sup>3</sup> DALI-2 (Type 6) provided as standard. Please consult factory for DALI (Type 8) options  
<sup>4</sup> DHL2 (Lutron) not available with 1000lm option  
<sup>5</sup> New Construction Housing (NC) not available with Linear Tegular (LTG) ceiling types  
<sup>6</sup> Shallow Housing (SH) not available with Grille (GR) and Grille Tegular (GTG) ceiling types  
<sup>7</sup> Chicago Plenum option available with Shallow Housing (SH) and Linear Tegular (LTG) ceiling

**PERFORMANCE**

LUMEN OUTPUT	DELIVERED LUMENS	SYSTEM WATTS	EFFICACY (LPW)
1000	1000	8.8	114
1500	1500	13.3	112
2000	2000	19.4	103
2500	2500	24.7	101

BASED ON 90+ CRI, 3500K AND 35D OPTIC  
Lumen output and actual wattage may vary +/- 5%

**HOUSING**

New construction and shallow housing options available  
New construction housing features an adjustable fixture collar with sliding mechanism for in field adjustment. Maximum 5 1/4" wood slat height  
Housings rated for #12 AWG (4 in, 4 out), 90°C conductors and through branch wiring

**OPTICS**

Proprietary multi-faceted reflectors with UGR <16  
Beam angles available in 15°, 35°, and 55°  
1.14" apertures with enhanced glare control  
Matte black or matte white faceted louver finish

**LED SYSTEM**

Standard 90+ CRI, <2 SDCM  
Available in 27K, 30K, 35K, and 40K  
L90 > 60,000 hours

**MULTIPLIERS**

BEAM ANGLE	
15D	0.94
35D	1.00
55D	0.80

COLOR TEMP	
2700K	0.94
3000K	0.97
3500K	1.00
4000K	1.07

**ELECTRICAL**

Standard 0-10V, constant current drivers  
100-1% dimming range and >0.9 power factor  
Integral drivers are located within fixture housing  
Accessible from above ceiling only with new construction housing option  
Accessible through fixture aperture with shallow housing option

**MOUNTING**

All housings ship with adjustable C-Channel bar hangers  
Designed for integration with wood slat ceiling systems (see drawings)  
Adjustable fixture collar in new construction housing for in field adjustment  
Infill panel accessory available with ceiling manufacturer (supplied by others)

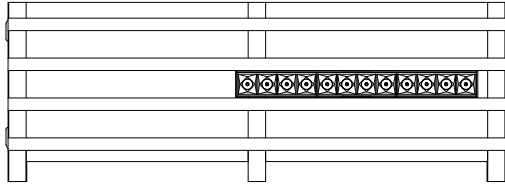
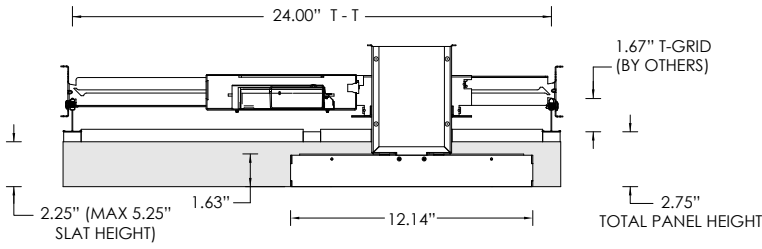
**LISTING**

ETL listed and conforms to UL1598 standard  
Certified to CSA22.2 NO.250.0.  
Rated for dry or damp locations

**WARRANTY**

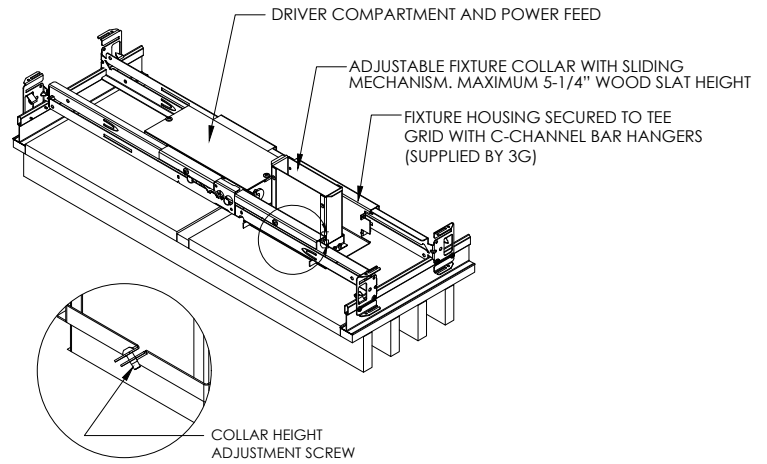
5 year limited warranty  
LED system rated for operation in ambient environments up to 25°C

**GR - GRILLE (CEILING SYSTEM BY OTHERS)**



COMPATIBLE CEILING SYSTEMS	
MANUFACTURER	COMPATIBLE PART NUMBER
ARMSTRONG	6323L_S03 (04, 06, 07, 08, 10, 11, 12, 13),
	6324L_S02 (03, 04, 06, 07, 08, 10, 11)
	6325L_S02 (06), 6333L_S14 (15, 16, 17),
	6334L_S14 (15, 16, 17), 6335L_S14 (15, 16, 17),
	7091, 7092, 7093, 7094, 7095, 7096, 7097, 7098, 7099, 7265
9WOOD	2116-2

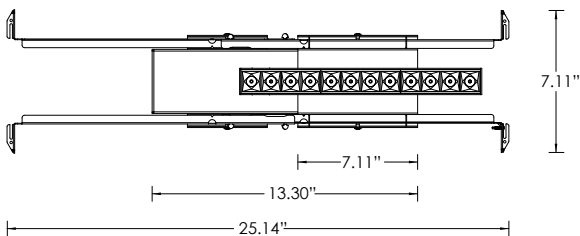
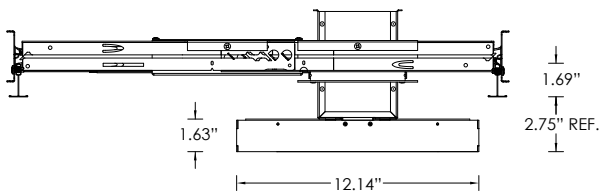
**NC - NEW CONSTRUCTION HOUSING**



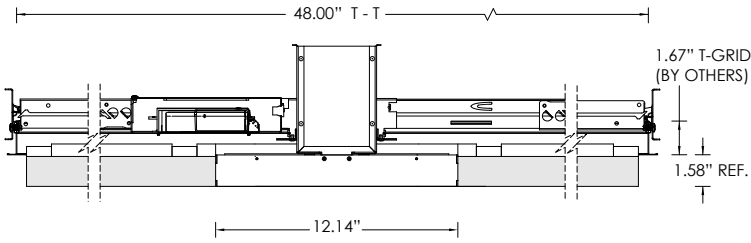
**PLEASE NOTE:** FIXTURE INSTALLATION MUST BE COORDINATED WITH CEILING PANEL INSTALLATION TO ENSURE FIXTURE ACCESSIBILITY CEILING SYSTEM AND 5/8" THICK INFILL PANEL (BY OTHERS)

**HOUSING TYPES**

**NC - NEW CONSTRUCTION HOUSING**

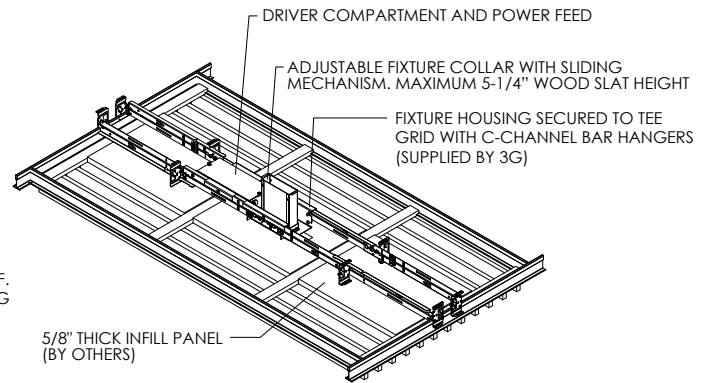


**GTG - GRILLE TEGULAR (CEILING SYSTEM BY OTHERS)**



COMPATIBLE CEILING SYSTEMS	
MANUFACTURER	COMPATIBLE PART NUMBER
ARMSTRONG	6723F51L4T5
9WOOD	2116-2

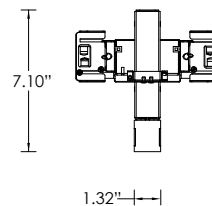
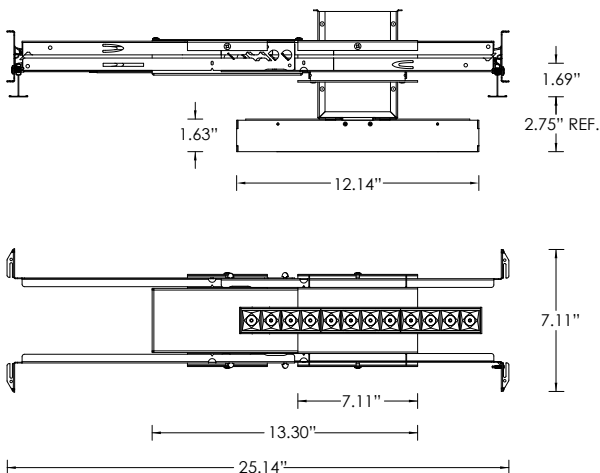
**NC - NEW CONSTRUCTION HOUSING**



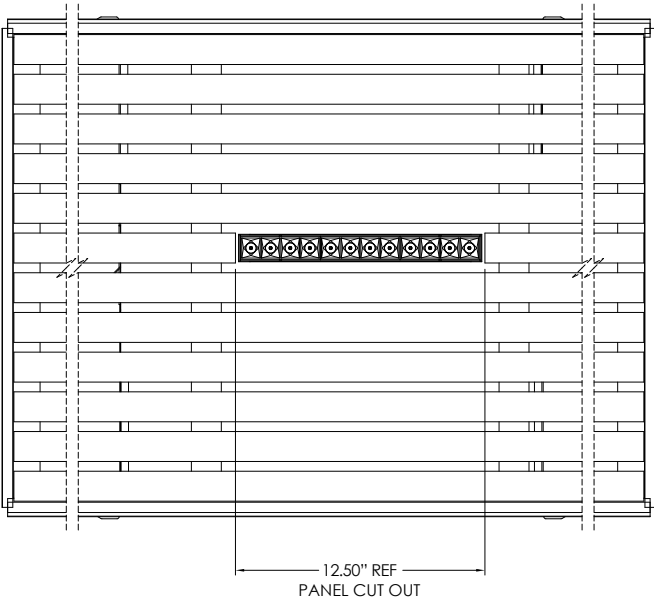
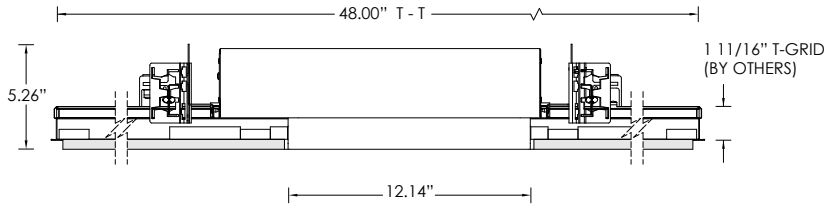
**PLEASE NOTE:** FIXTURE INSTALLATION MUST BE COORDINATED WITH CEILING PANEL INSTALLATION TO ENSURE FIXTURE ACCESSIBILITY CEILING SYSTEM AND 5/8" THICK INFILL PANEL (BY OTHERS)

**HOUSING TYPES**

**NC - NEW CONSTRUCTION HOUSING**

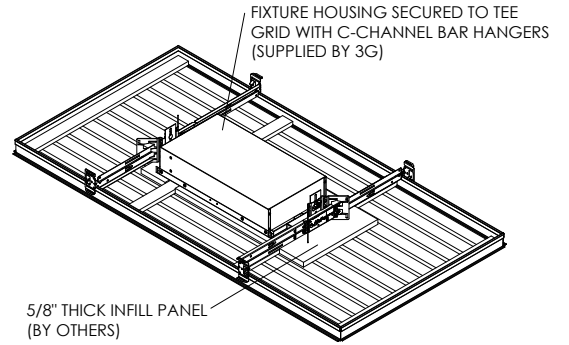


**LTG - LINEAR TEGULAR (CEILING SYSTEM BY OTHERS)**



COMPATIBLE CEILING SYSTEMS	
MANUFACTURER	COMPATIBLE PART NUMBER
ARMSTRONG	6733F51L4T9, 6733F51L4T5
9WOOD	2116-2

**SH - SHALLOW HOUSING**



**PLEASE NOTE:** FIXTURE INSTALLATION MUST BE COORDINATED WITH CEILING PANEL INSTALLATION TO ENSURE FIXTURE ACCESSIBILITY CEILING SYSTEM AND 5/8" THICK INFILL PANEL (BY OTHERS)

**HOUSING TYPES**

**SH - SHALLOW HOUSING**

