

# 3G LIGHTING

## 3G-DL20RA

2" ROUND ADJUSTABLE  
DOWNLIGHT

2" diameter high performance, adjustable downlight  
Standard 95+ CRI LED system with performance up to 95 LPW  
Delivered lumen range up to 1500lm at 95+ CRI  
Installation and fully serviceable from below ceiling plane  
Proprietary hot aiming mechanism with sliding center beam optimization  
0°- 35° lockable tilt and 360° rotation  
Companion to 3G's Cylinder product family



**PRODUCTION Q2 2025**

### TRIM FLANGE



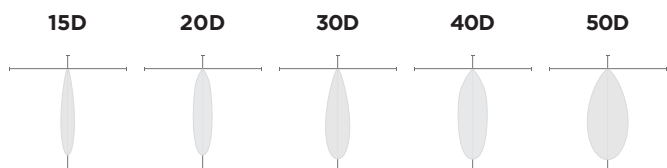
### TRIMLESS



### MILLWORK



### OPTICS



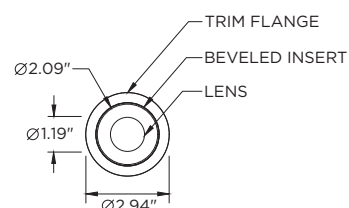
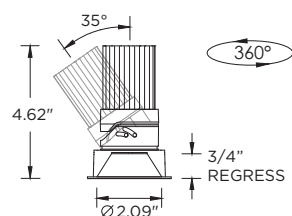
### PERFORMANCE

LUMEN OUTPUT	DELIVERED LUMENS	SYSTEM WATTS	EFFICACY (LPW)
750	750	8.1	92
1000	1000	11.2	89
1250	1250	15.6	80
1500	1500	19.6	77

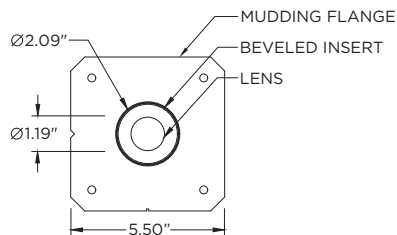
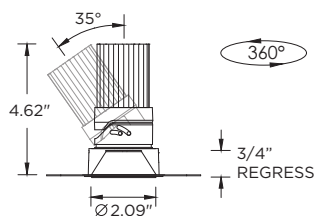
BASED ON 95+ CRI, 3500K, 30D OPTIC WITH SOFTENING LENS  
Lumen output and actual wattage may vary +/- 5%

### DIMENSIONS

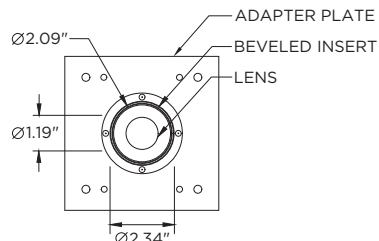
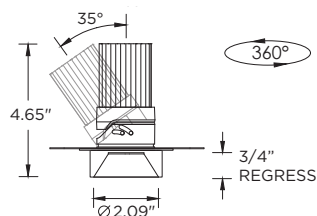
#### TRIM FLANGE



#### TRIMLESS



#### MILLWORK



<b>PROJECT:</b>				<b>TYPE:</b>			
<b>CATALOG#:</b>				<b>DATE:</b>		<b>QTY:</b>	

CAT. NO	LUMEN OUTPUT	CRI	COLOR TEMP	BEAM ANGLE	VOLTAGE
<b>3G-DL20RA</b>	<b>07</b> - 750 LUMENS <b>10</b> - 1000 LUMENS <b>12</b> - 1250 LUMENS <b>15</b> - 1500 LUMENS  <small>All lumen outputs are delivered lumens at 95+ CRI</small>	<b>H95</b> - 95+ CRI	<b>24K</b> - 2400K <b>27K</b> - 2700K <b>30K</b> - 3000K <b>35K</b> - 3500K <b>40K</b> - 4000K	<b>15D</b> - 15° <sup>1</sup> <b>20D</b> - 20° <b>30D</b> - 30° <b>40D</b> - 40° <b>50D</b> - 50°	<b>UNV</b> - 120/277V <b>120</b> - 120V

DRIVER	TRIM FLANGE	BEVELED INSERT	HOUSING TYPE
<b>DIM</b> - 0-10V (100-1%) <b>LE</b> - PHASE DIM <sup>2</sup> <small>(TRIAC/ELV, 100-1%)</small> <b>D01</b> - 0-10V (100-0.1%) <b>DALI</b> - DALI (100-1%) <sup>3</sup>	<b>WT</b> - WHITE <b>BT</b> - BLACK <b>ST</b> - SILVER <b>XTR</b> - TRIMLESS <small>(MUD-IN DRYWALL)</small> <b>MWF</b> - FLANGELESS <sup>4</sup> MILLWORK	<b>WI</b> - WHITE <b>BI</b> - BLACK <b>SI</b> - SILVER	<b>RMD</b> - REMODEL (NON-IC) <b>NCF</b> - NEW CONSTRUCTION FRAME (NON-IC) <b>NC</b> - NEW CONSTRUCTION HOUSING (CP RATED) <b>IC</b> - NEW CONSTRUCTION <sup>5</sup> IC HOUSING  <small>NCF, NC and IC housings ship with nailer type bar hangers</small>

OPTIONS
<b>SF</b> - SOFTENING LENS (SUPPLIED STANDARD) <b>LS</b> - LINEAR SPREAD LENS <b>SB</b> - SANDBLASTED LENS <b>WL</b> - WET LOCATION RATED (SUPPLIED WITH SOFTENING LENS) <b>CP</b> - CHICAGO PLENUM <sup>6</sup> <b>EMR</b> - REMOTE EMERGENCY BATTERY <sup>7</sup>  <small>Maximum 1 optical accessory</small>

<sup>1</sup> 15D reflector available up to 1000lm

<sup>2</sup> Phase dimming options available in 120V only

<sup>3</sup> DALI-2 (Type 6) provided as standard. Consult factory for DALI Type 8 option

<sup>4</sup> MWF not available with Remodel (NON-IC)

<sup>5</sup> New Construction IC housing available up to 1000lm

<sup>6</sup> Chicago Plenum option available with New Construction Housing

<sup>7</sup> Supplied with enclosure with Emergency Battery and driver. Installed remotely by others. Not accessible through fixture aperture

## PERFORMANCE

LUMEN OUTPUT	DELIVERED LUMENS	SYSTEM WATTS	EFFICACY (LPW)
750	750	8.1	92
1000	1000	11.2	89
1250	1250	15.6	80
1500	1500	19.6	77

BASED ON 95+ CRI, 3500K, 30D OPTIC WITH SOFTENING LENS  
Lumen output and actual wattage may vary +/- 5%

## HOUSING

Remodel, new construction frame, new construction and IC housing options for installation in any site condition  
Maximum ceiling thickness of 0.625". Consult factory for modifications  
All housing options (except millwork) designed to be easily converted in field to trim or trimless with minimal components  
Housing rated for #12 AWG (4 in, 4 out), 90°C conductors and through branch wiring

## BEVELED INSERT

Cast aluminum beveled insert with matte powder coated finish  
2" aperture with regressed LED source for enhanced glare control

## TRIM

Cast aluminum trim flange with matte powder coated finish and minimal 0.300" overlap

## TRIMLESS

Mudding flange features a perforated surface for easy mud-in application  
Integral blocking support provided to ensure fixture is properly secured within ceiling structure

## OPTICS

High performance, TIR optic  
Beam angle available in 15°, 20°, 30°, 40° and 50°  
Optics are field replaceable (15° not interchangeable)  
Softening lens supplied standard  
0°-35° lockable tilt and 360° lockable rotation

## LED SYSTEM

Standard 95+ CRI  
Color consistency <2 SDCM  
Available in 24K, 27K, 30K, 35K, and 40K  
L90 > 50,000 hours

## MULTIPLIERS

BEAM ANGLE	
15D	0.96
20D	1.00
30D	1.00
40D	0.96
50D	0.93

COLOR TEMP	
2400K	0.91
2700K	0.95
3000K	0.97
3500K	1.00
4000K	1.03

## ELECTRICAL

Standard 0-10V, constant current drivers  
100-1% dimming range and >0.9 power factor  
Standard 120/277V universal voltage with several driver options  
120V Forward Phase/Reverse Phase driver option (100-1%)  
Integral drivers are easily accessible through luminaire aperture

## EMERGENCY

7W output for 90 minutes (+/- 665lm at 95+ CRI). Title 24 Certified  
Remote emergency battery (not accessible through fixture aperture)  
Maximum remote mounting distance: 50ft (12AWG) or 25ft (14AWG)  
Caution: Emergency Battery utilizes more than one power source and servicing should be performed by qualified personnel

## MOUNTING

Trim fixture designed for use in drywall, wood, acoustic, and other architectural ceilings  
Trimless fixture designed for use in drywall, mud-in ceiling applications  
Millwork Flangeless option for wood ceilings and acoustic  
Recommended trim and mud-in trimless cut-out (2.625" diameter)  
Recommended Millwork Flangeless cut-out (2.375" diameter)  
All housing types except remodel ship with nailer type bar hangers (14" to 26" extension)

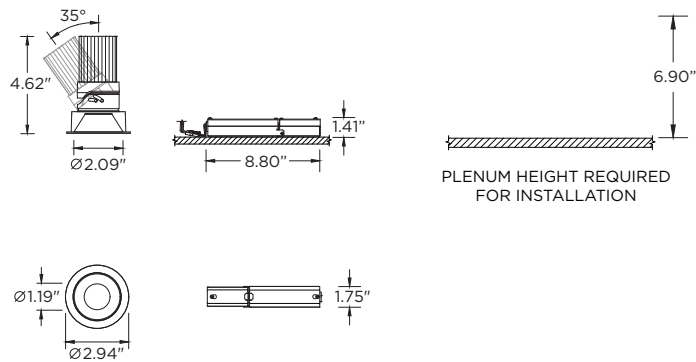
## LISTING

ETL listed and conforms to UL1598 standard  
Certified to CSA22.2 NO.250.0.  
Rated for dry or damp locations

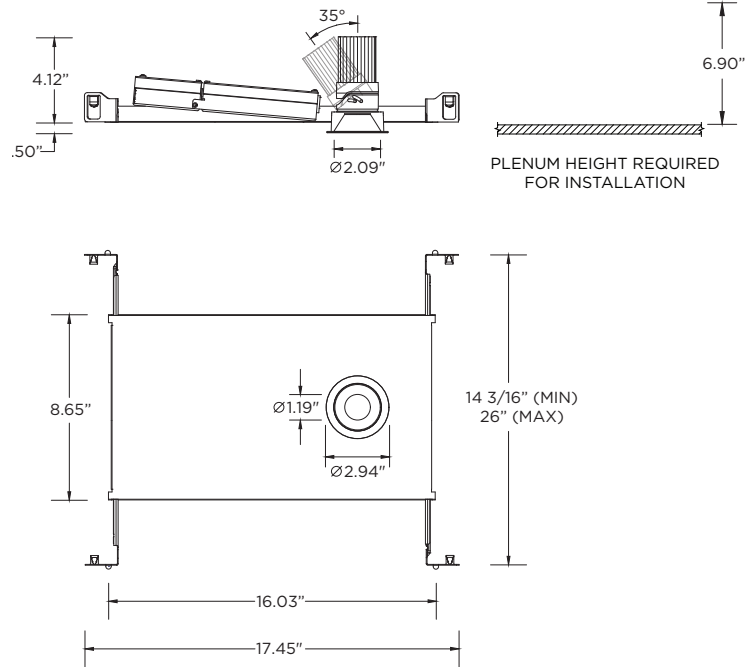
## WARRANTY

5 year limited warranty  
LED system rated for operation in ambient environments up to 25°C

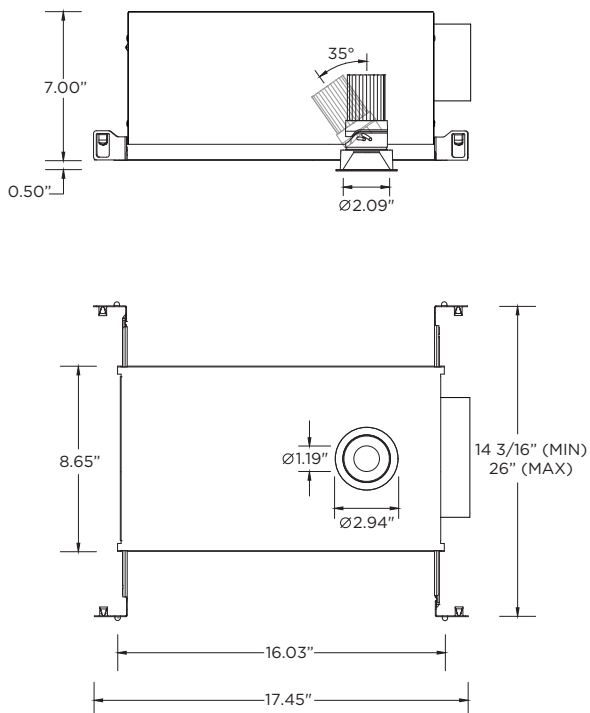
**RMD - REMODEL (NON-IC)**



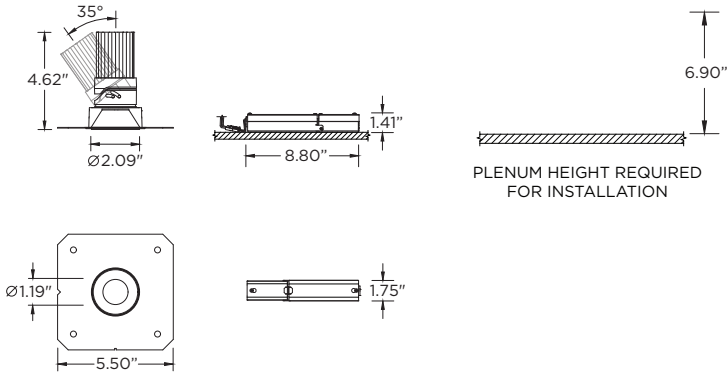
**NCF - NEW CONSTRUCTION FRAME (NON-IC)**



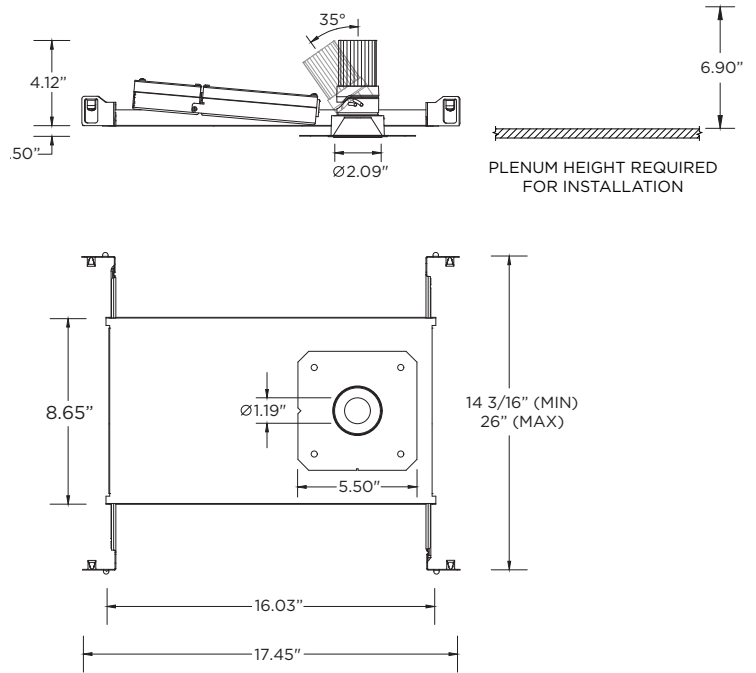
**NC - NEW CONSTRUCTION HOUSING (NON-IC AND CP RATED)**



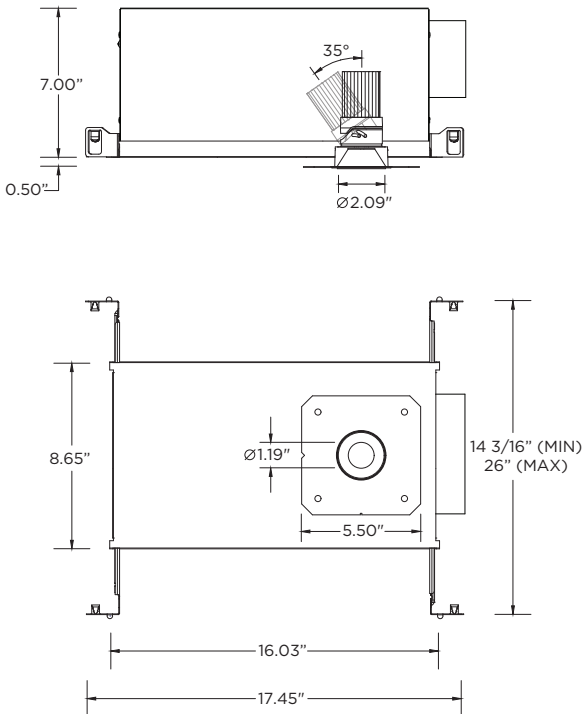
**RMD - REMODEL (NON-IC)**



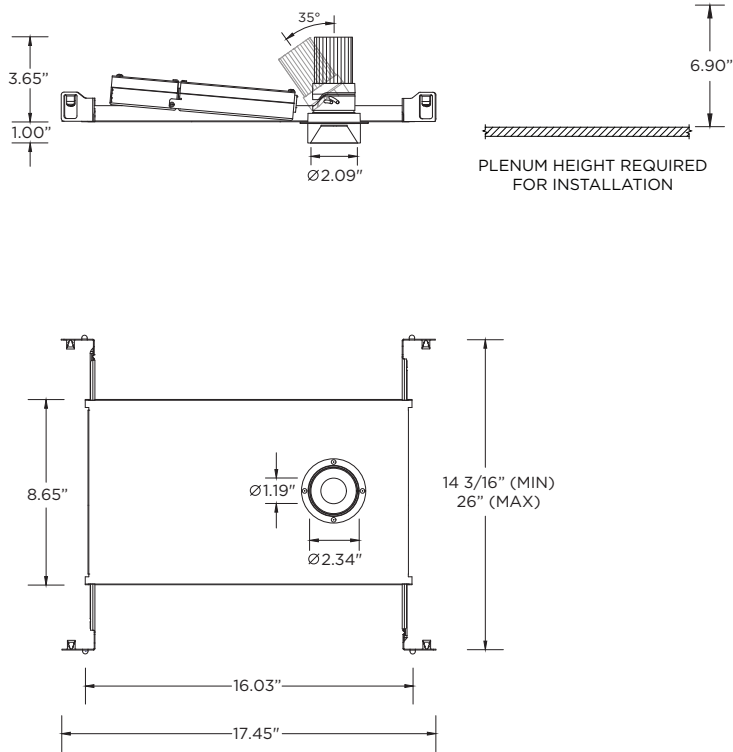
**NCF - NEW CONSTRUCTION FRAME (NON-IC)**



**NC - NEW CONSTRUCTION HOUSING (NON-IC AND CP RATED)**



**NCF - NEW CONSTRUCTION FRAME (NON-IC)**



**NC - NEW CONSTRUCTION HOUSING (NON-IC AND CP RATED)**

