



3G-58RMSL

5.8" RECESSED MINI MADISON SLOT
DYNAMIC WHITE



3GD **3GT**

5.8" recessed slot designed for continuous runs in various configurations
Suitable for drywall, wood, and other architectural ceiling applications
Suitable for grid ceiling and 6" techzone applications
Machined aluminum double gimbals. Adjustable and lockable
Individual fixture heads can slide left or right within the channel (up to 18")
Easily adjustable in the field for maximum flexibility
Dim to Warm and Tunable White LED options up to 2000lm (90+ CRI)
1% dimming standard with several integral driver options

PROJECT:		TYPE:	
CATALOG#:		DATE:	QTY:

CAT. NO	LED SOURCE	LUMEN OUTPUT	CRI	BEAM ANGLE	VOLTAGE
3G-58RMSL	DW - DIM TO WARM (1800K-3000K) TW - TUNABLE WHITE ¹ (2700K-6500K)	08 - 800 LUMENS 12 - 1200 LUMENS 20 - 2000 LUMENS	H90 - 90+ CRI	10D - 10° ² 20D - 20° 40D - 40° 60D - 60° 90D - 90°	UNV - 120/277V 120 - 120V 347 - 347V ³

DRIVER	FLANGE TYPE	GIMBAL FINISH	HOUSING INTERIOR
DIM - 0-10V (100-1%) LE - PHASE DIM ⁴ (TRIAC/ELV, 100-1%) DO1 - 0-10V (100-0.1%) ¹ DALI - DALI (100-1%) ^{1,5} DHL2 - LUTRON HI-LUME (1% ECOSYSTEM) DMX - DMX (100-0%) ¹	WT - WHITE TRIM XTR - TRIMLESS (MUD-IN DRYWALL) FX - FLANGELESS GCX - GRID CEILING* (UNIVERSAL MOUNT) 6TZ - 6" TECHZONE (AVAILABLE IN STRAIGHT RUNS ONLY) <small>*Universal mounting brackets used for all grid ceiling types only. See mounting section for details</small>	NG - NATURAL ALUMINUM BG - BLACK GIMBAL WG - WHITE GIMBAL	BK - BLACK WH - WHITE

OPTIONS	HOUSING TYPE	FIXTURE HEAD SPACING
2C - 2 CIRCUIT OPERATION 3C - 3 CIRCUIT OPERATION HXB - BLACK HEXCELL LOUVER LS - LINEAR SPREAD LENS SB - SANDBLASTED LENS SF - SOFTENING LENS STB - BLACK SNOOT STN - NATURAL SNOOT STW - WHITE SNOOT CP - CHICAGO PLENUM <small>*Maximum 3 optical accessories</small>	S - _____' (STRAIGHT) L - _____'X _____' (L-SHAPE) U - _____'X _____'X _____' (U-SHAPE) R - _____'X _____' (RECTANGLE/SQUARE) <small>U-Shape and R-Rectangle/Square not available with grid ceiling applications Continuous runs available in 6" increments</small>	12" - 12" ON CENTER 18" - 18" ON CENTER 24" - 24" ON CENTER 36" - 36" ON CENTER 48" - 48" ON CENTER CUS - CUSTOM (FIXTURE HEADS)

¹ Tunable White option available with DO1, DALI and DMX drivers

² 10D reflector available with 800 lumen output only

³ 347 available in "DIM" 0-10V only (100-1%)

⁴ Phase dimming options available in 120V only

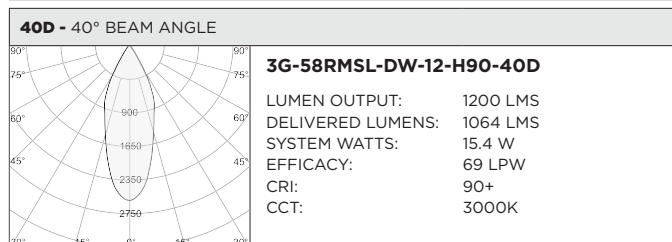
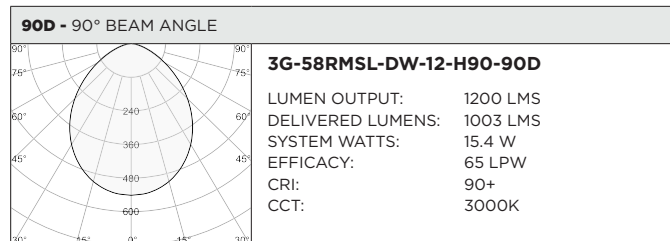
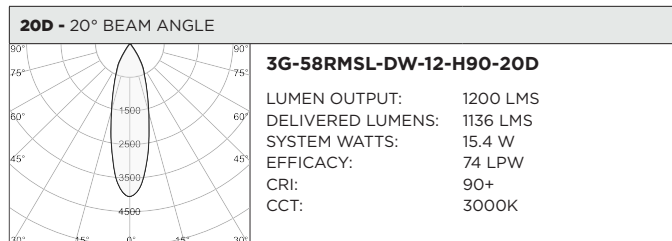
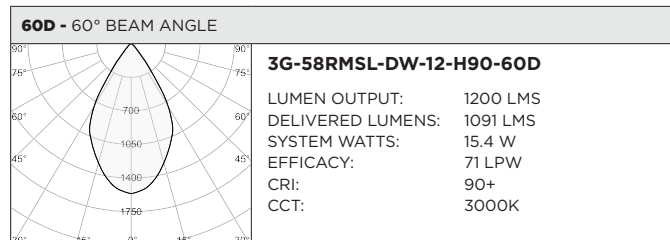
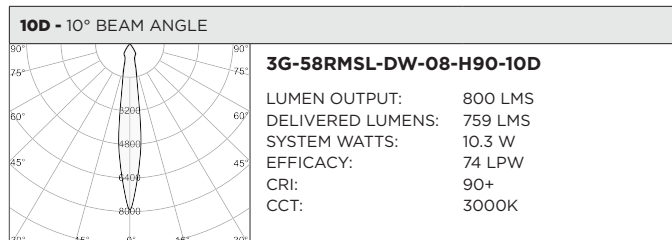
⁵ DALI-2 (Type 6) provided as standard. Please consult factory for DALI (Type 8) options

3GD - Warm Dim

3GT - Tunable White

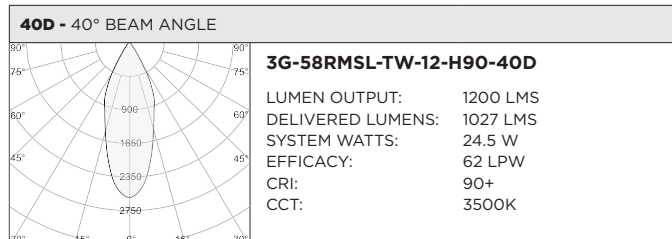
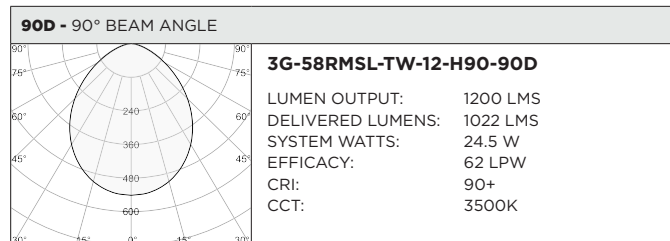
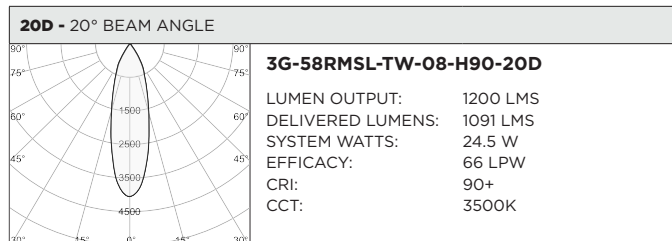
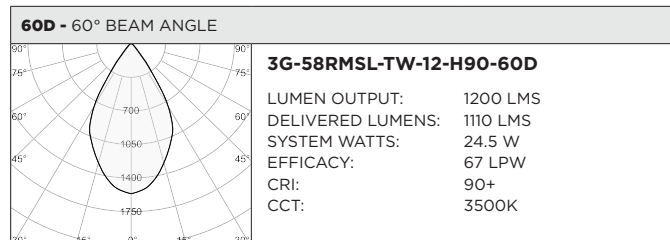
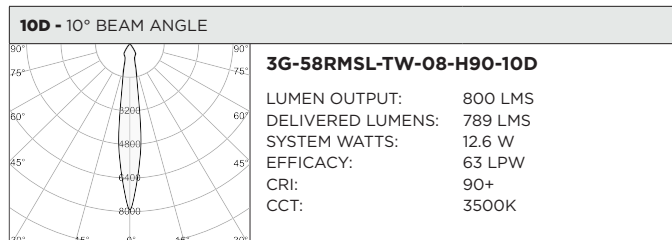
BASED ON 60° BEAM ANGLE AND 3000K (PER FIXTURE HEAD)

LUMEN OUTPUT	90+ CRI (3000K)		
	DELIVERED LUMENS	SYSTEM WATTS	EFFICACY (LPW)
800LMs	N/A	N/A	N/A
1200LMs	1136	15.4	74
2000LMs	1593	23.2	69



BASED ON 60° BEAM ANGLE (PER FIXTURE HEAD)

LUMEN OUTPUT	90+ CRI (2700K)			90+ CRI (3500K)			90+ CRI (6500K)		
	DELIVERED LUMENS	SYSTEM WATTS	EFFICACY (LPW)	DELIVERED LUMENS	SYSTEM WATTS	EFFICACY (LPW)	DELIVERED LUMENS	SYSTEM WATTS	EFFICACY (LPW)
800LMs	N/A	N/A	N/A	N/A	N/A	N/A	N/A	N/A	N/A
1200LMs	1066	16.6	64	1091	16.6	66	1221	16.6	74
2000LMs	1491	24.5	61	1561	24.5	64	1684	24.5	69



HOUSING

Housing constructed in extruded aluminum and cold rolled steel
Designed for continuous runs in various configurations. Available in 6" increments
Maximum ceiling thickness of 1.75". Consult factory for modifications
Standard matte black powder coated finish with optional matte white finish
Trim flange with matte white powder coated finish and minimal 0.400" overlap
Trimless model features a satin coat mudding flange for seamless ceiling integration

ADJUSTABILITY

Solid aluminum, 70mm double gimbals with dual axis adjustability (45°x45°)
Individual fixture heads can slide left or right within the channel (up to 18")
Easily adjustable in the field for maximum flexibility
Each double gimbal can be locked in place

OPTICS

Regressed LED source for enhanced glare control
Proprietary anodized, aluminum reflectors are field replaceable
(10° reflector not interchangeable)
Available in 10°, 20°, 40°, 60° and 90°

LISTING

ETL listed and conforms to UL1598 standard. Certified to CSA22.2
NO.250.0. Rated for indoor dry or damp locations

WARRANTY

5 Year Warranty on LED and drivers
Manufacturer 1 Year Warranty for defects in material and workmanship
under normal use
Ambient temperature at fixture should not exceed 25°C

ELECTRICAL

Standard 0-10V, constant current drivers with 100-1% dimming range
and >0.9 power factor
Standard 120/277V universal voltage drivers. Optional 347V, 0-10V driver
Lutron EcoSystem and eldoLED DALI options available with 100-1% dimming
eldoLED 0-10V, 100-0.01% dimming range available (D01)
DMX drivers available with 100-0% dimming range
120V Forward Phase/Reverse Phase driver option with 100-1% dimming
Individual fixture sections can be wired independently
All drivers are integral and easily accessible through the channel aperture

LED SYSTEM

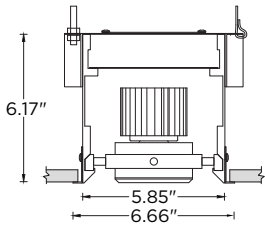
Bridgelux LED module (field replaceable)
Color consistency <3 SDCM
Standard 90+ CRI
Dim to Warm (1800K-3000K)
Tunable White (2700K-6500K)
L70 >50,000 hours
5 Year Warranty

MOUNTING

New construction housing suspended via 1/4" threaded rod or
suspension cables (by others)
Fixture housing suitable for IC applications
Trim fixture designed for use in drywall, wood, and other architectural
ceiling materials
Trimless fixture designed for use in drywall, mud-in ceiling applications
Flangeless fixture designed for use in wood ceilings
Suitable for various grid ceiling applications (see mounting details)

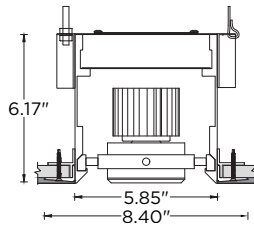
HARD CEILING

WT - TRIM



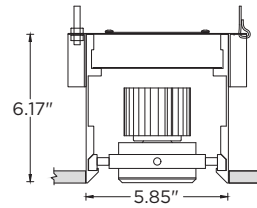
RECOMMENDED CEILING
CUT-OUT 6.25"

XTR - TRIMLESS



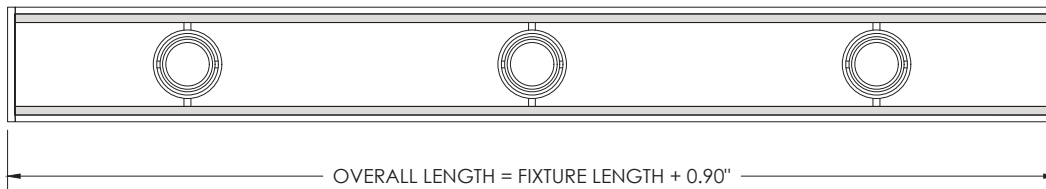
RECOMMENDED CEILING
CUT-OUT 6.25"

FX - FLANGELESS

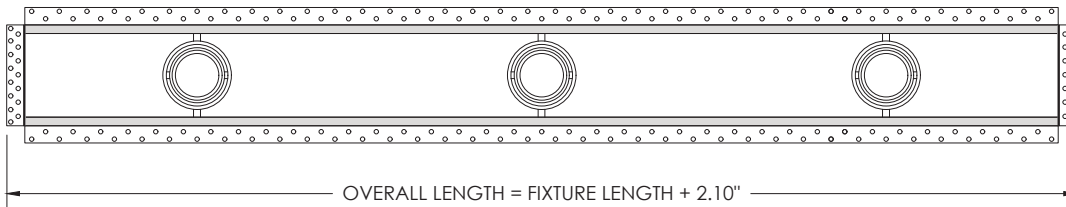


RECOMMENDED CEILING
CUT-OUT 5.90"

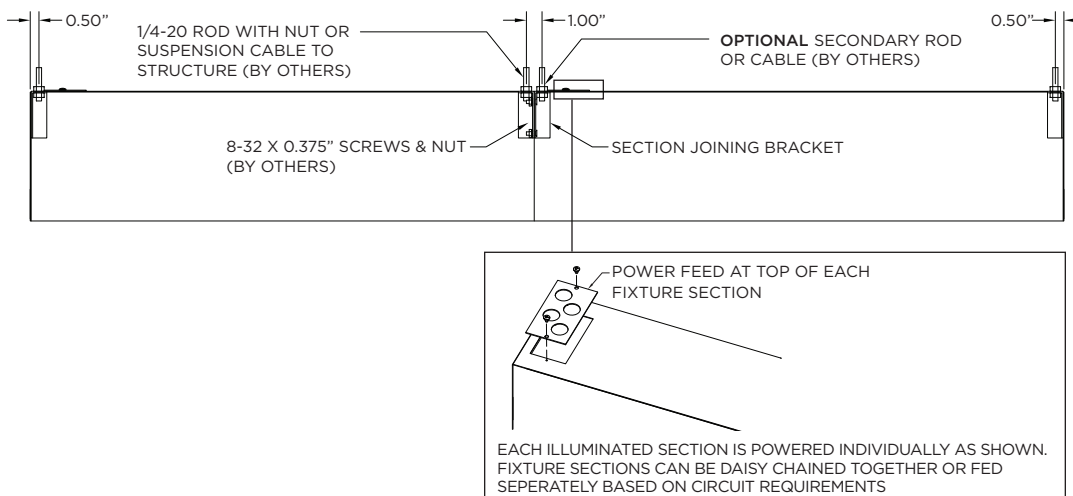
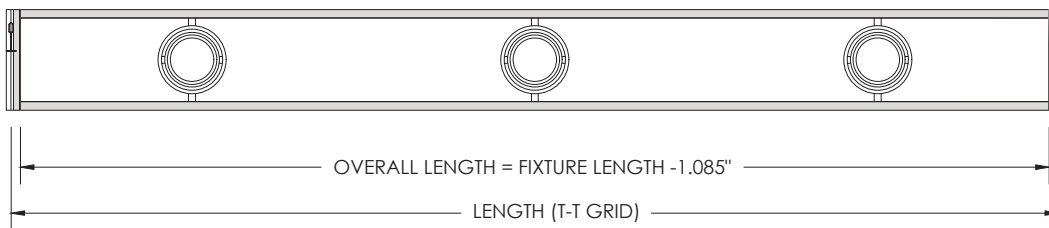
TRIM



TRIMLESS (MUD-IN DRYWALL)

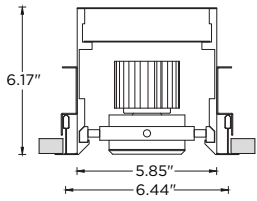


FLANGELESS

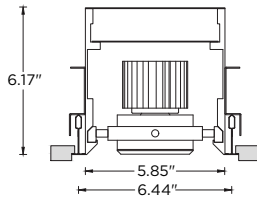


GRID CEILING

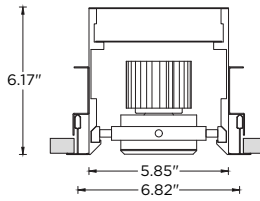
9L - 9/16" LAYIN



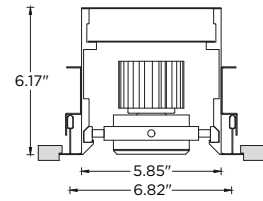
9TG - 9/16" TEGULAR



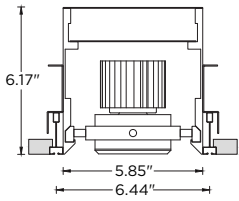
15L - 15/16" LAYIN



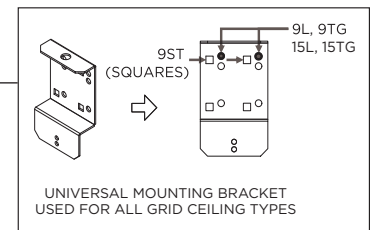
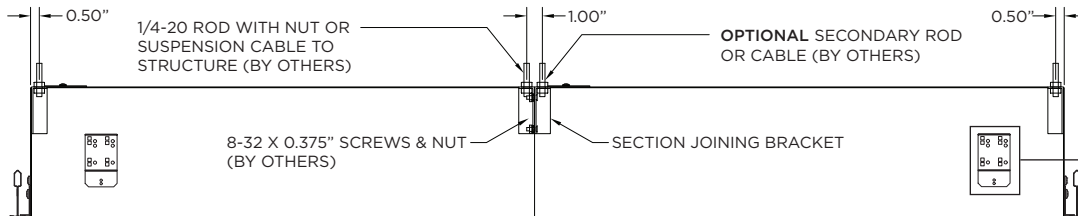
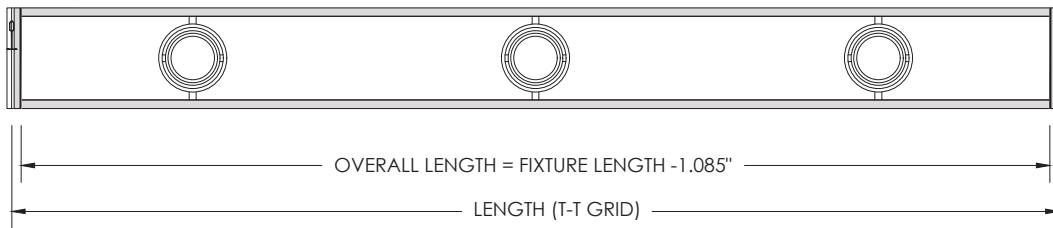
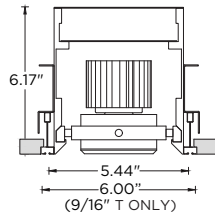
15TG - 15/16" TEGULAR



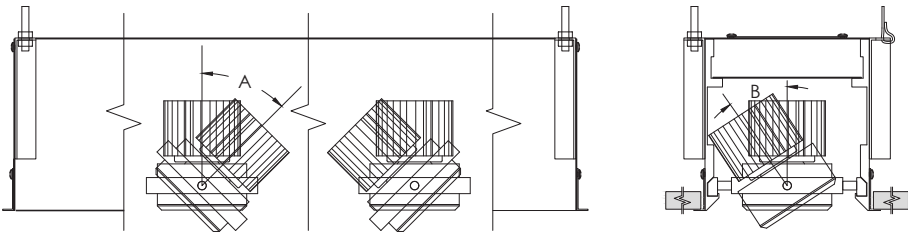
9ST - 9/16" SLOT TEE TEGULAR



6TZ - TECHZONE



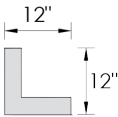
GIMBAL ADJUSTABILITY



LUMEN OUTPUT	A	B
Up to 1500lm	45°	45°
2200lm/3000lm	45°	35°
4000lm	45°	20°

PATTERNS

Specify pattern shape and overall dimensions as shown below
Patterns are connected with 12"x12" mitered corner sections (Fixture heads not available)
Please consult factory for custom patterns and shapes not shown below



L-SHAPE	U-SHAPE	RECTANGLE/SQUARE
Provide dimensions of AxB Example: L - 6'x8'	Provide dimensions of AxBxC Example: U - 8'x10'x6"	Provide dimensions of AxB Example: R - 10'x8'