

3G LIGHTING

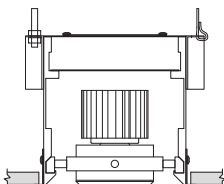
3G-58RMSL

5.8" RECESSED
MADISON SLOT

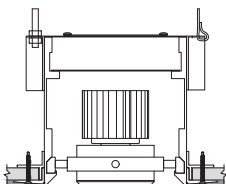
Solid aluminum double gimbal with dual axis adjustability
Individual fixture heads can be repositioned in either direction (up to 18")
Standard 95+ CRI LED system with performance up to 126 LPW
Delivered lumen range up to 4366lm at 95+ CRI
Regressed LED source for enhanced glare control
10° to 90° beam angle options suitable for various applications
Companion to 3G's Madison product family



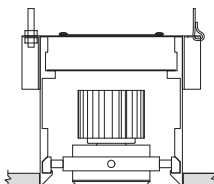
WT - TRIM



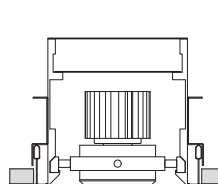
XTR - TRIMLESS



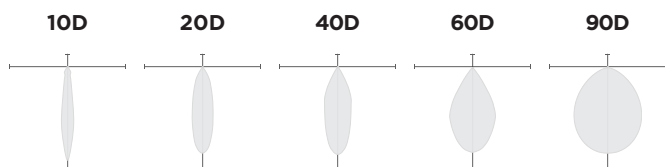
FX - FLANGELESS



GCX - GRID CEILING



OPTICS



PERFORMANCE

LUMEN OUTPUT	DELIVERED LUMENS	SYSTEM WATTS	EFFICACY (LPW)
1000	1000	8.7	115
1500	1500	13.1	115
2000	2000	18.6	108
2500	2500	23.2	108
3000	3000	29.5	102
3500	3500	34.7	101
4000	4000	39.5	101

BASED ON 95+ CRI, 35K, 40D OPTIC
Lumen output and actual wattage may vary +/- 5%

PATTERNS

Specify pattern shape and overall dimensions as shown below. Patterns are connected with 12"x12" mitered corner sections (Fixture heads not available)
Please consult factory for custom patterns and shapes not shown below.

L-SHAPE	U-SHAPE	RECTANGLE/SQUARE
<p>Provide dimensions of AxB Example: L - 6'x8'</p>	<p>Provide dimensions of AxBxC Example: U - 8'x10'x6"</p>	<p>Provide dimensions of AxB Example: R - 10'x8'</p>

PROJECT:		TYPE:	
CATALOG#:		DATE:	QTY:

CAT. NO	LUMEN OUTPUT	CRI	COLOR TEMP	BEAM ANGLE	VOLTAGE
3G-58RMSL	10 - 1000 LUMENS 15 - 1500 LUMENS 20 - 2000 LUMENS 25 - 2500 LUMENS 30 - 3000 LUMENS 35 - 3500 LUMENS 40 - 4000 LUMENS <small>All lumen outputs are delivered lumens at 95+ CRI</small>	H95 - 95+ CRI	27K - 2700K 30K - 3000K 35K - 3500K 40K - 4000K	10D - 10° ¹ 20D - 20° 40D - 40° 60D - 60° 90D - 90° * <small>*90D optic supplied with lens Not available with other lens options</small>	UNV - 120/277V 120 - 120V 347 - 347V ²

DRIVER	TRIM FLANGE	GIMBAL FINISH	HOUSING FINISH
DIM - 0-10V (100-1%) LE - PHASE DIM ³ <small>(TRIAC/ELV, 100-1%)</small> DO1 - 0-10V (100-0.1%) DALI - DALI (100-1%) ⁴ DHL2 - LUTRON HI-LUME <small>(1% ECOSYSTEM)</small> DMX - DMX (100-0%)	WT - WHITE TRIM (STANDARD) BT - BLACK TRIM XTR - TRIMLESS (MUD-IN DRYWALL) FX - FLANGELESS GCX - GRID CEILING * <small>(UNIVERSAL MOUNT)</small> 6TZ - 6" TECHZONE <small>*Universal mounting brackets used for all grid ceiling types only. See mounting details</small>	NG - NATURAL ALUMINUM BG - BLACK GIMBAL WG - WHITE GIMBAL	BK - BLACK (STANDARD) WH - WHITE

OPTIONS	RUN TYPE	FIXTURE HEAD SPACING
2C - 2 CIRCUIT 3C - 3 CIRCUIT SF - SOFTENING LENS LS - LINEAR SPREAD LENS SB - SANDBLASTED LENS HXB - BLACK HEXCELL LOUVER CP - CHICAGO PLENUM EMR - REMOTE EMERGENCY ⁵ BATTERY <small>*Lens options not available with 90D optic Maximum 3 optical accessories</small>	S - ____' (STRAIGHT) L - ____'x ____' (L-SHAPE) U - ____'x ____'x ____' (U-SHAPE) R - ____'x ____' (RECTANGLE/SQUARE) <small>Continuous runs available in 1" increments Patterns not available with grid ceiling</small>	12" - 12" ON CENTER 18" - 18" ON CENTER 24" - 24" ON CENTER 36" - 36" ON CENTER 48" - 48" ON CENTER CUS - CUSTOM SPACING SPECIFY NUMBER OF DOWNLIGHTS " CUS(XX) "

- ¹ 10D reflector available up to 2000lm
² 347 available in "DIM" 0-10V only (100-1%)
³ Phase dimming options available in 120V only
⁴ DALI-2 (Type 6) provided as standard
⁵ Supplied with enclosure with Emergency Battery and driver. Installed remotely by others.
 Not accessible through fixture aperture

PERFORMANCE

LUMEN OUTPUT	DELIVERED LUMENS	SYSTEM WATTS	EFFICACY (LPW)
1000	1000	8.7	115
1500	1500	13.1	115
2000	2000	18.6	108
2500	2500	23.2	108
3000	3000	29.5	102
3500	3500	34.7	101
4000	4000	39.5	101

BASED ON 95+ CRI, 35K, 40D OPTIC
Lumen output and actual wattage may vary +/- 5%

HOUSING

Housing constructed in extruded aluminum and cold rolled steel
Designed for continuous runs in various configurations
Maximum ceiling thickness of 1.75". Consult factory for modifications
Standard matte black powder coated housing finish
Trim flange with power coated finish and 0.400" overlap
Trimless model features a perforated galvanized mudding flange

ADJUSTABILITY

Solid aluminum double gimbal with dual axis adjustability
Individual fixture heads can be repositioned in either direction (up to 18")
Each double gimbal can be locked in place

OPTICS

Proprietary anodized, aluminum reflectors
Beam angle available in 10°, 20°, 40° and 60°, and 90°
Reflectors are field replaceable (10° and 20° reflectors not interchangeable)

LED SYSTEM

Standard 95+ CRI
Color consistency <2 SDCM
Available in 27K, 30K, 35K, and 40K
L90 > 50,000 hours

ELECTRICAL

Standard 0-10V, constant current drivers
100-1% dimming range and >0.9 power factor
Standard 120/277V universal voltage with several driver options
120V Forward Phase/Reverse Phase driver option (100-1%)
Integral drivers are easily accessible through luminaire aperture

MULTIPLIERS

BEAM ANGLE	
10D	0.92
20D	1.07
40D	1.00
60D	1.00
90D	0.90

COLOR TEMP	
2700K	0.98
3000K	1.00
3500K	1.00
4000K	1.02

EMERGENCY

7W output for 90 minutes (One fixture head +/- 850lm at 95+ CRI)
Title 24 Certified
Remote emergency battery not accessible through fixture aperture
Maximum remote mounting distance:
3000lm or below - 50ft (12AWG) or 25ft (14AWG)
Above 3000lm - 30ft (12AWG) or 20ft (14AWG)
Caution: Emergency Battery utilizes more than one power source and servicing should be performed by qualified personnel

MOUNTING

New construction housing suspended via 1/4" threaded rod or suspension cables (by others)
Trim fixture designed for use in drywall, wood, and other architectural ceiling materials
Trimless fixture designed for use in drywall, mud-in ceiling applications
Flangeless fixture designed for use in wood ceilings
Suitable for various grid ceiling applications (see mounting details)

LISTING

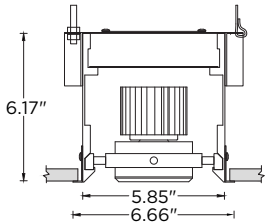
ETL listed and conforms to UL1598 standard
Certified to CSA22.2 No.250.0.
Rated for dry or damp locations

WARRANTY

5 year limited warranty
LED system rated for operation in ambient environments up to 25°C

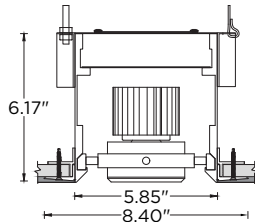
HARD CEILING

WT - TRIM



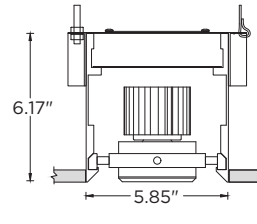
RECOMMENDED CEILING
CUT-OUT 6.25"

XTR - TRIMLESS



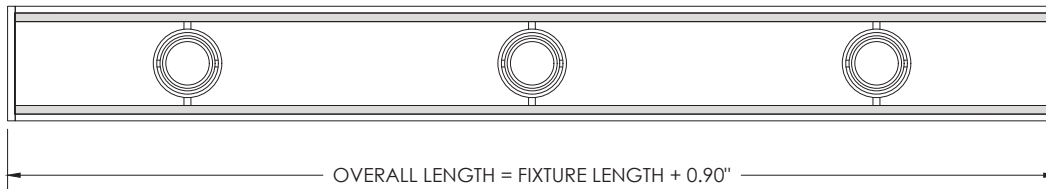
RECOMMENDED CEILING
CUT-OUT 6.25"

FX - FLANGELESS

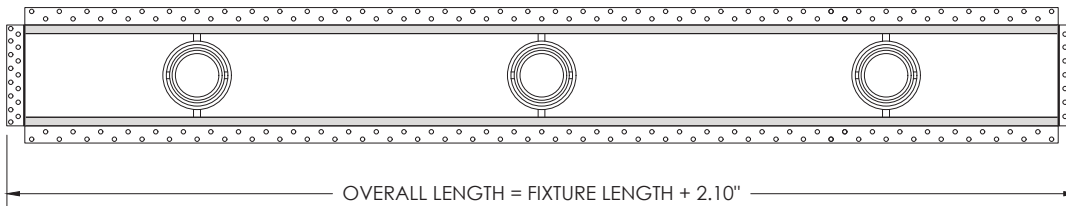


RECOMMENDED CEILING
CUT-OUT 5.90"

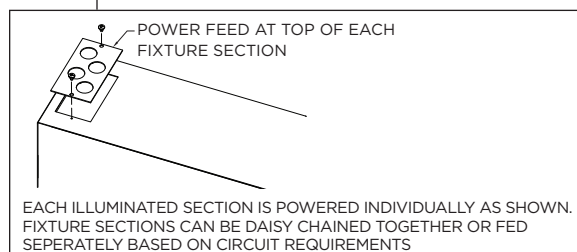
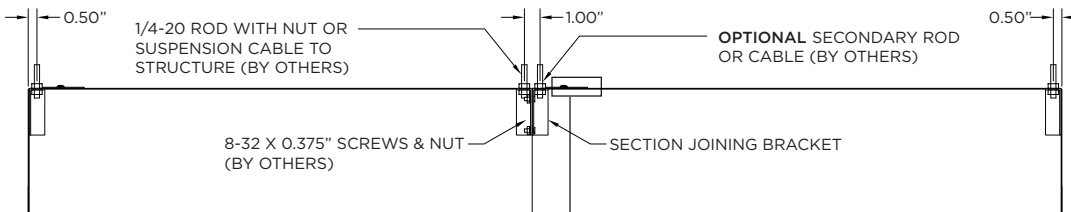
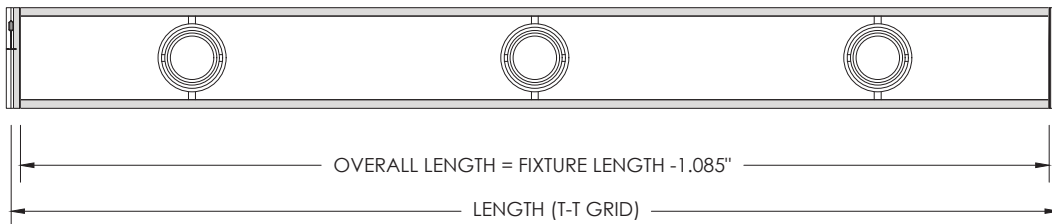
TRIM



TRIMLESS (MUD-IN DRYWALL)

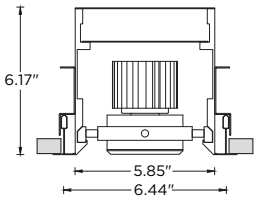


FLANGELESS

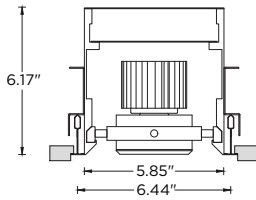


GRID CEILING

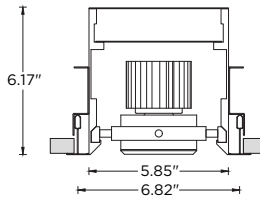
9L - 9/16" LAYIN



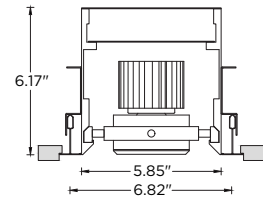
9TG - 9/16" TEGULAR



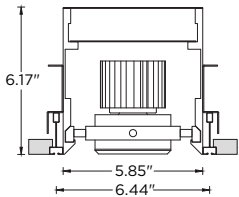
15L - 15/16" LAYIN



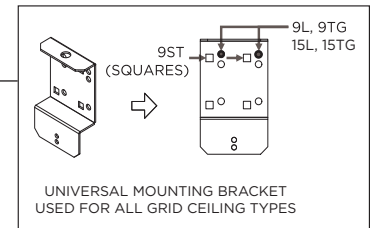
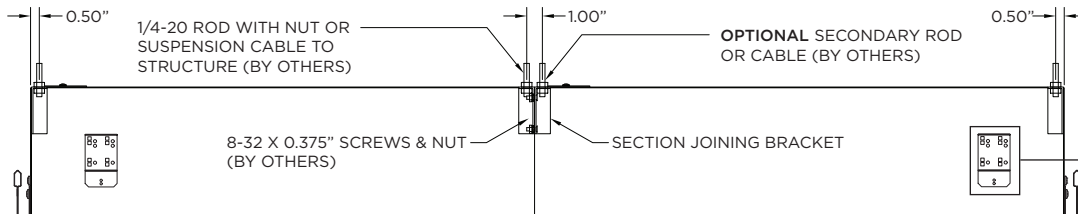
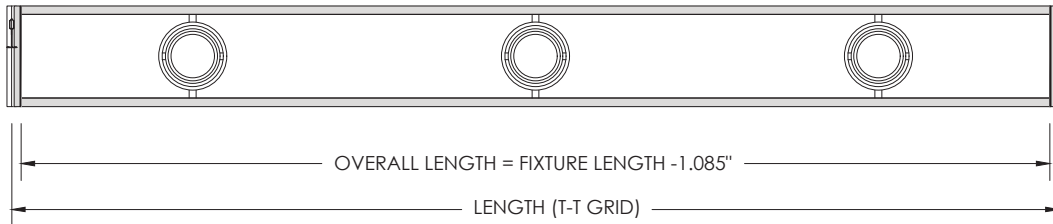
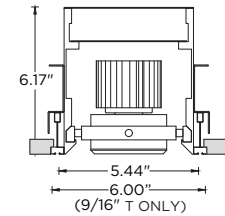
15TG - 15/16" TEGULAR



9ST - 9/16" SLOT TEE TEGULAR

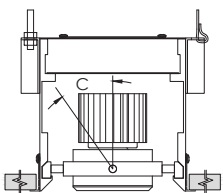


6TZ - TECHZONE

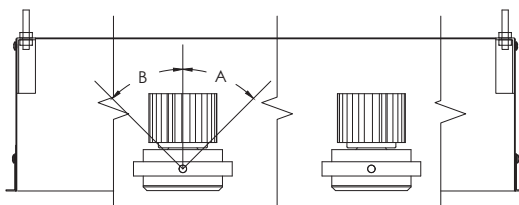


GIMBAL ADJUSTABILITY

WIDTH



LENGTH



LUMEN OUTPUT	A	B	C
Up to 3000lm	45°	45°	30°
4000lm	45°	45°	20°