



3G-2WLI-DI

2" LINEAR
DIRECT/INDIRECT
WALL MOUNTED



Narrow 2" aperture with one piece extruded aluminum housing
Individual or continuous runs available in multiple run configurations
Direct distribution with multiple lumen output options
High-efficacy LED performance up to 147 lumens per watt
Delivered lumen range up to 2040 lumens per foot
Extruded acrylic lens available in flush, 1" and 2" drop lens options
Asymmetric optics available
1% dimming standard with several driver options

PROJECT:		TYPE:	
CATALOG#:		DATE:	QTY:

CAT. NO	LUMEN OUTPUT (DIRECT)	LUMEN OUTPUT (INDIRECT)	CRI
3G-2WLI-DI	D250 - 250 LM/FT D500 - 500 LM/FT D750 - 750 LM/FT D1000 - 1000 LM/FT DC___ - CUSTOM OUTPUT (SPECIFY LM/FT) * <small>*Specify custom lumen outputs in 50lm increments (ie: DC600, DC650, DC700) Custom output cannot exceed D1000 DLC minimum lumen output is 500 lm/ft</small>	L250 - 250 LM/FT L500 - 500 LM/FT L750 - 750 LM/FT ¹ L1000 - 1000 LM/FT ² LC___ - CUSTOM OUTPUT (SPECIFY LM/FT) * <small>*Specify custom lumen outputs in 50lm increments (ie: LC600, LC650, LC700) Custom output cannot exceed L1000</small>	S80 - 80+ CRI ³ H90 - 90+ CRI <small>*DLC listing available with 80CRI</small>

COLOR TEMP	VOLTAGE	DRIVER	LENS OPTION (DIRECT)	LENS OPTION (INDIRECT)
27K - 2700K 30K - 3000K 35K - 3500K 40K - 4000K <small>*DLC listing available with 35K</small>	UNV - 120/277V 347 - 347V ⁴	DIM - 0-10V (100-1%) D01 - 0-10V (100-0.1%) DALI - DALI (100-1%) ⁵ DHL2 - LUTRON HI-LUME (1% ECOSYSTEM) DMX - DMX (100-0%)	FL - FLUSH LENS DD1 - 1" DROP LENS ⁶ DD2 - 2" DROP LENS ⁶ DASY - ASYMMETRIC LENS	FL - FLUSH LENS ASY - ASYMMETRIC LENS

FINISH	CIRCUITING	OPTIONS	RUN TYPE
WH - WHITE BK - BLACK SV - SILVER <small>All mounting canopies provided in white as standard</small>	1C - SINGLE CIRCUIT 2C - DUAL CIRCUIT (SEPARATE DIRECT & INDIRECT)	EMB - EMERGENCY BATTERY * (INTEGRAL) EMC - EMERGENCY CIRCUIT <small>*Minimum 4' section</small>	S - ___' (STRAIGHT) * L - ___'X ___' (L-SHAPE) U - ___'X ___'X ___' (U-SHAPE) <small>*Individual units available from 3' to 8' Continuous runs available in 1" increments as standard</small>

¹ L750 (750LM/FT) and 90CRI not available with ASY (indirect asymmetric option)

² L1000 (1000LM/FT) not available with ASY (indirect asymmetric option)

³ S80 (80+ CRI) not available with 27K

⁴ 347 available in "DIM" 0-10V only (100-1%)

⁵ DALI-2 (Type 6) provided as standard. Please consult factory for DALI (Type 8) options

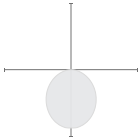
⁶ DD1 (1" drop lens) and DD2 (2" drop lens) available with straight run type only

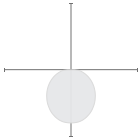


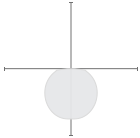
DLC listing starting at 500 lumens per foot (D500)
Available with 80CRI and 3500K

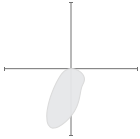
DELIVERED LUMENS PER FOOT BASED ON 80+ CRI 3500K LED SOURCE

DIRECT LENS OPTION

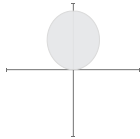
FLUSH	DELIVERED LUMENS	SYSTEM WATTS	EFFICACY (LPW)
	250	2.0	125
	500	4.0	125
	750	6.6	114
	1000	8.8	114

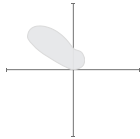
1" DROP	DELIVERED LUMENS	SYSTEM WATTS	EFFICACY (LPW)
	250	2.0	125
	500	4.0	125
	750	6.6	114
	1000	8.8	114

2" DROP	DELIVERED LUMENS	SYSTEM WATTS	EFFICACY (LPW)
	250	2.0	125
	500	4.0	125
	750	6.6	114
	1000	8.8	114

ASYMMETRIC	DELIVERED LUMENS	SYSTEM WATTS	EFFICACY (LPW)
	250	1.9	133
	500	3.8	133
	750	5.7	132
	1000	7.8	128

INDIRECT LENS OPTION

FLUSH	DELIVERED LUMENS	SYSTEM WATTS	EFFICACY (LPW)
	250	1.7	150
	500	3.3	150
	750	5.0	151
	1000	6.8	148

ASYMMETRIC	DELIVERED LUMENS	SYSTEM WATTS	EFFICACY (LPW)
	250	1.5	164
	500	3.1	164
	750	4.6	164
	1000	6.1	165

LUMEN OUTPUT MULTIPLIERS

COLOR TEMP	80+ CRI	90+ CRI
2700K	N/A	0.78
3000K	0.97	0.83
3500K	1.00	1.00
4000K	1.02	1.02

HOUSING

Extruded aluminum housing with narrow 2" aperture
Die cast aluminum end caps add 1/4" to each end of luminaire
Individual units and continuous runs available in 1" increments as standard
24-gauge LED reflector with high reflectance white powder coated finish
Standard polyester powder coated matte white finish. Optional finishes available

OPTICS

Extruded, satin acrylic lens designed for optimal performance and glare control. Up to 8' continuous
Lens options include flush, 1" and 2" drops with illuminated end caps for all drop lenses
High performance asymmetric optics available

LISTING

ETL listed and conforms to UL1598 standard. Certified to CSA22.2 NO.250.0. Rated for indoor dry or damp locations
DLC certified. Consult factory for details

WARRANTY

5 Year Warranty on LED and drivers
Manufacturer 1 Year Warranty for defects in material and workmanship under normal use
Ambient temperature at fixture should not exceed 25°C

ELECTRICAL

Standard 0-10V, constant current drivers with 100-1% dimming range and >0.9 power factor
Standard 120/277V universal voltage with several driver options
Luminaires are pre-wired with factory installed quick connects and branch circuit wiring
All drivers are integral and easily accessible through luminaire aperture

EMERGENCY

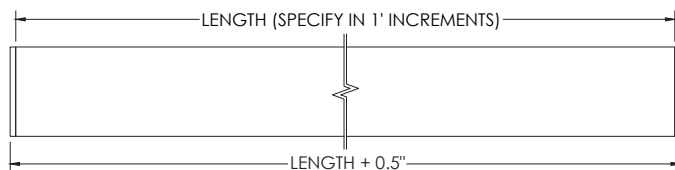
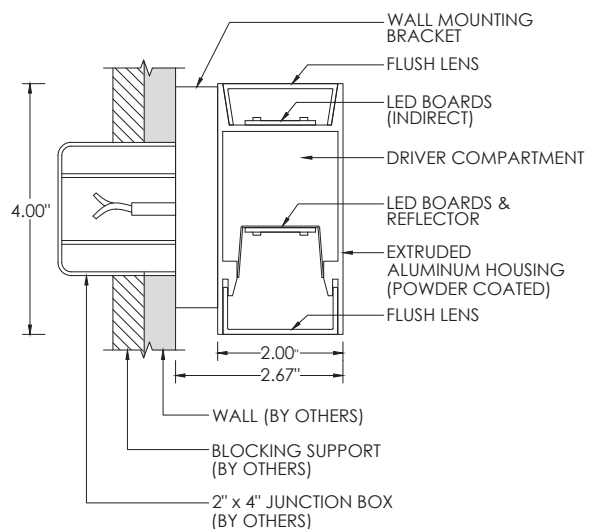
Integral batteries operate minimum 4' and maximum 6' sections.
15W output (1980lm) for 90 minutes. Title 24 Certified
4' section (+/- 495lm per foot at 80+ CRI)
5' section (+/- 395lm per foot at 80+ CRI)
6' section (+/- 330lm per foot at 80+ CRI)

LED SYSTEM

Proprietary LED system with color consistency <3 SDCM
Available in 27K, 30K, 35K, and 40K
Standard 80+CRI. Optional 90+CRI
R9 value of 56 for 90+CRI
L90 >60,000 hours
5 Year Warranty

MOUNTING

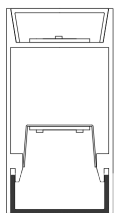
Toolless installation with 3G's proprietary mounting system
Internal, toolless joiner system (latch and hook) easily connects multiple sections together
LED reflectors remain within each fixture section during installation with 3G's click and lock spring system
Suitable for wall mount applications (2"x4" junction box)
Fixture is secured to mounting brackets that fasten directly to wall
Suitable for various architectural ceilings (see mounting details)
Fixture weight: +/- 2.5 lb/ft



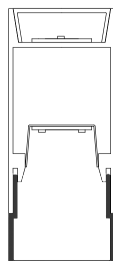
LENS OPTION

DIRECT LENS OPTION

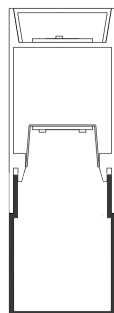
FL - FLUSH



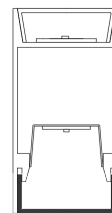
DD1 - 1" DROP



DD2 - 2" DROP

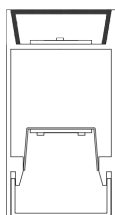


DASY - ASYMMETRIC

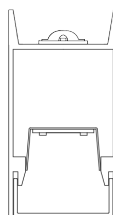


INDIRECT LENS OPTION

FL - FLUSH



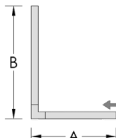
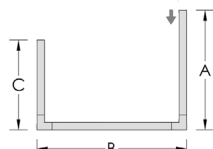
ASY - ASYMMETRIC



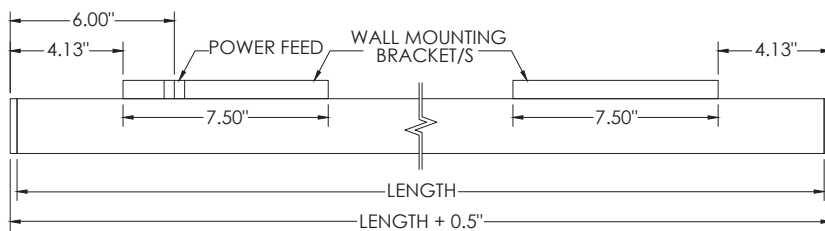
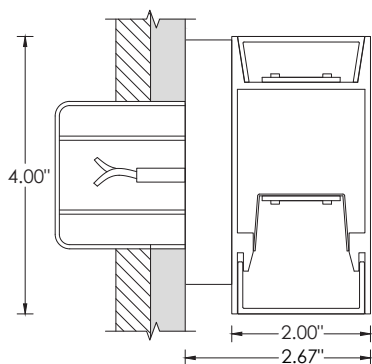
PATTERNS

Specify pattern shape and overall dimensions as shown below
Patterns are connected with fully illuminated 12"x12" L-shaped sections
Please consult factory for custom patterns and shapes not shown below



L-SHAPE	U-SHAPE
Provide dimensions of AxB Example: L - 6'x8'	Provide dimensions of AxBxC Example: U - 8'x10'x6"
	

MOUNTING DETAILS



POWER FEED	NON POWER FEED
2" x 4" SLOTTED JUNCTION BOX (BY OTHERS)	MOUNTING SCREWS (BY OTHERS)
