



## 3G-RC4SQ

4 LIGHT SQUARE  
RECESSED MADISON

Solid aluminum double gimbal with dual axis adjustability  
Standard 95+ CRI LED system with performance up to 127 LPW  
Delivered lumen range per fixture head up to 3820lm at 95+ CRI  
Regressed LED source for enhanced glare control  
10° to 90° beam angle options suitable for various applications  
New construction housing with IC housing option available  
Companion to 3G's Madison product family



PROJECT:		TYPE:		
CATALOG#:		DATE:	QTY:	
CAT. NO	LUMEN OUTPUT (PER FIXTURE HEAD)**	CRI	COLOR TEMP	BEAM ANGLE
3G-RC4SQ	10 - 1000 LUMENS (4000 TOTAL) 15 - 1500 LUMENS (6000 TOTAL) 20 - 2000 LUMENS (8000 TOTAL) 25 - 2500 LUMENS (10,000 TOTAL) 30 - 3000 LUMENS (12,000 TOTAL) 35 - 3500 LUMENS (14,000 TOTAL)  All lumen outputs are <b>delivered lumens</b> at 95+ CRI	H95 - 95+ CRI	27K - 2700K 30K - 3000K 35K - 3500K 40K - 4000K	10D - 10° <sup>1</sup> 20D - 20° 40D - 40° 60D - 60° 90D - 90° *  *90D optic supplied with lens Not available with other lens options
VOLTAGE		DRIVER	TRIM FLANGE	GIMBAL FINISH
UNV - 120/277V 120 - 120V 347 - 347V <sup>2</sup>		DIM - 0-10V (100-1%) LE - PHASE DIM <sup>3</sup> (TRIAC/ELV, 100-1%) D01 - 0-10V (100-0.1%) DALI - DALI (100-1%) <sup>4</sup> DMX - DMX (100-0%) DHL2 - LUTRON HI-LUME LDE1 (1% ECOSYSTEM)	WT - WHITE TRIM BT - BLACK TRIM ST - SILVER TRIM XTR - TRIMLESS (MUD-IN DRYWALL)	NG - NATURAL ALUMINUM BG - BLACK GIMBAL WG - WHITE GIMBAL
HOUSING FINISH		HOUSING TYPE	OPTIONS	
BK - BLACK (STANDARD) WH - WHITE CF - CUSTOM		NC - NEW CONSTRUCTION (NON-IC)	2C - 2 CIRCUIT BH - C-CHANNEL BAR HANGERS CP - CHICAGO PLENUM <sup>5</sup> EMR - REMOTE EMERGENCY BATTERY <sup>6</sup> SF - SOFTENING LENS SB - SANDBLASTED LENS LS - LINEAR SPREAD LENS HXB - BLACK HEXCELL LOUVER STN - NATURAL SNOOT STB - BLACK SNOOT STW - WHITE SNOOT  <small>*Lens option not available with 90D optic Maximum 3 optical accessories per fixture head</small>	

<sup>1</sup> 10D reflector available up to 2000lm

<sup>2</sup> 347 available in "DIM" 0-10V only (100-1%)

<sup>3</sup> Phase dimming options available in 120V only

<sup>4</sup> DALI-2 (Type 6) provided as standard

<sup>5</sup> Chicago Plenum option available with New Construction Housing

<sup>6</sup> Supplied with enclosure with Emergency Battery and driver. Installed remotely by others. Not accessible through fixture aperture

**\*\*** 3G has upgraded our LED system and overall performance at no additional cost. We now offer 95+CRI as standard. All lumen outputs are delivered lumens. This upgraded LED system is more efficient than our previous 80CRI, 90CRI, and 97CRI options. Please see the last page of this spec sheet to cross-reference old lumen outputs with our new, 95+CRI lumen output options



## PERFORMANCE (PER FIXTURE HEAD)

LUMEN OUTPUT	DELIVERED LUMENS	SYSTEM WATTS	EFFICACY (LPW)
1000	1000	8.7	116
1500	1500	13.1	116
2000	2000	18.6	108
2500	2500	23.2	108
3000	3000	29.5	102
3500	3500	34.7	101

BASED ON 95+ CRI, 3500K, 40D OPTIC  
Lumen output and actual wattage may vary +/- 5%

## MULTIPLIERS

BEAM ANGLE	
10D	0.92
20D	1.07
40D	1.00
60D	1.00
90D	0.90

COLOR TEMP	
2700K	0.98
3000K	1.00
3500K	1.00
4000K	1.02

## HOUSING

New construction housing  
Housing fabricated in cold rolled steel. Standard black powder coated finish  
Maximum ceiling thickness of 1". Consult factory for modifications  
All housing options designed to be easily converted in field to trim or trimless with minimal components  
Housing rated for #12 AWG (4 in, 4 out), 90°C conductors and through branch wiring

## TRIM FLANGE

Features a 3/4" removable trim assembly designed to conceal inner hardware

## TRIMLESS

Aluminum mudding flange features a unique reveal that emulates drywall  
Integral aluminum blocking support provided to ensure fixture is properly secured within ceiling structure

## ADJUSTABILITY

Solid aluminum double gimbal with dual axis adjustability  
Each double gimbal can be locked in place

## OPTICS

Proprietary anodized, aluminum reflectors  
Beam angle available in 10°, 20°, 40° and 60°, and 90°  
Reflectors are field replaceable (10° reflector not interchangeable)

## LED SYSTEM

Standard 95+ CRI  
Color consistency <2 SDCM  
Available in 27K, 30K, 35K, and 40K  
L90 > 50,000 hours

## ELECTRICAL

Standard 0-10V, constant current drivers  
100-1% dimming range and >0.9 power factor  
Standard 120/277V universal voltage with several driver options  
120V Forward Phase/Reverse Phase driver option (100-1%)  
Integral drivers are easily accessible through luminaire aperture

## EMERGENCY

7W output for 90 minutes (One fixture head +/- 850lm at 95+ CRI)  
Title 24 Certified  
Remote emergency battery not accessible through fixture aperture  
Maximum remote mounting distance:  
3000lm or below - 50ft (12AWG) or 25ft (14AWG)  
Above 3000lm - 30ft (12AWG) or 20ft (14AWG)  
Caution: Emergency Battery utilizes more than one power source and servicing should be performed by qualified personnel

## MOUNTING

Trim fixture designed for use in drywall, wood, acoustic, and other architectural ceilings  
Trimless fixture designed for use in drywall, mud-in ceiling applications  
Optional C-Channel bar hangers available  
Butterfly brackets compatible with 1/2" x 1/2" channel, 1/2", 5/8", 3/4" bar hanger, 1/2" EMT, and furring strips (supplied by others)

## LISTING

ETL listed and conforms to UL1598 standard  
Certified to CSA22.2 NO.250.0.  
Rated for dry or damp locations

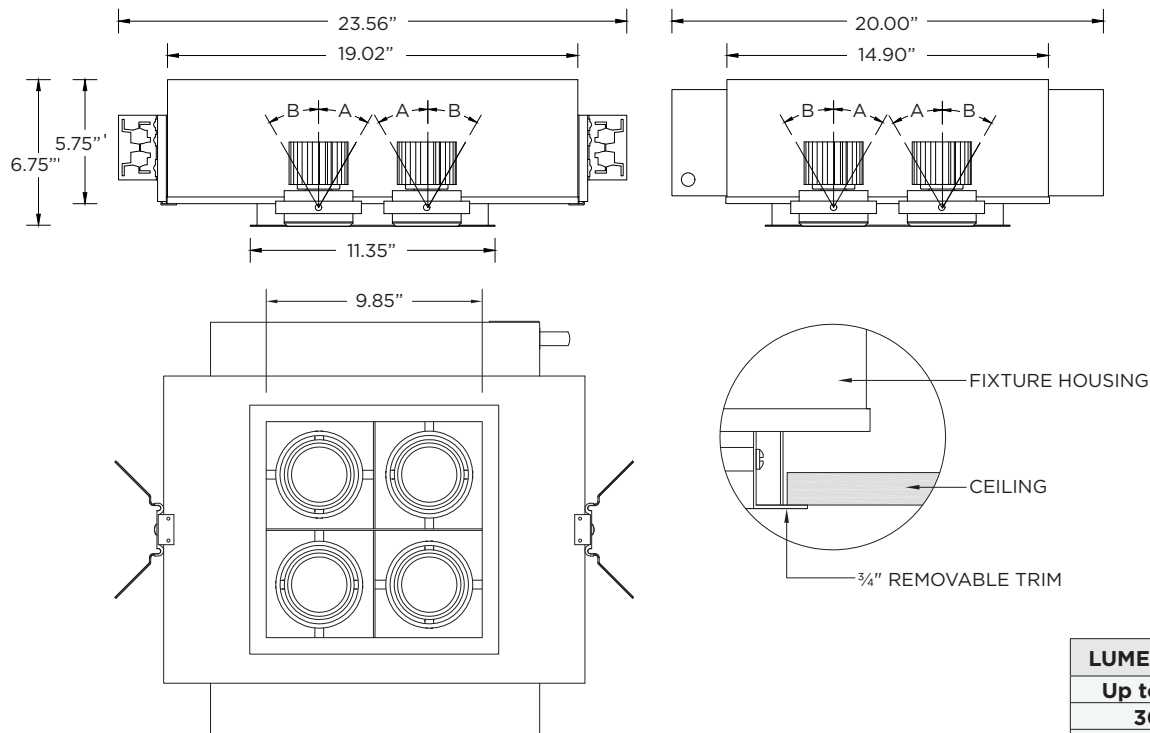
## WARRANTY

5 year limited warranty  
LED system rated for operation in ambient environments up to 25°C



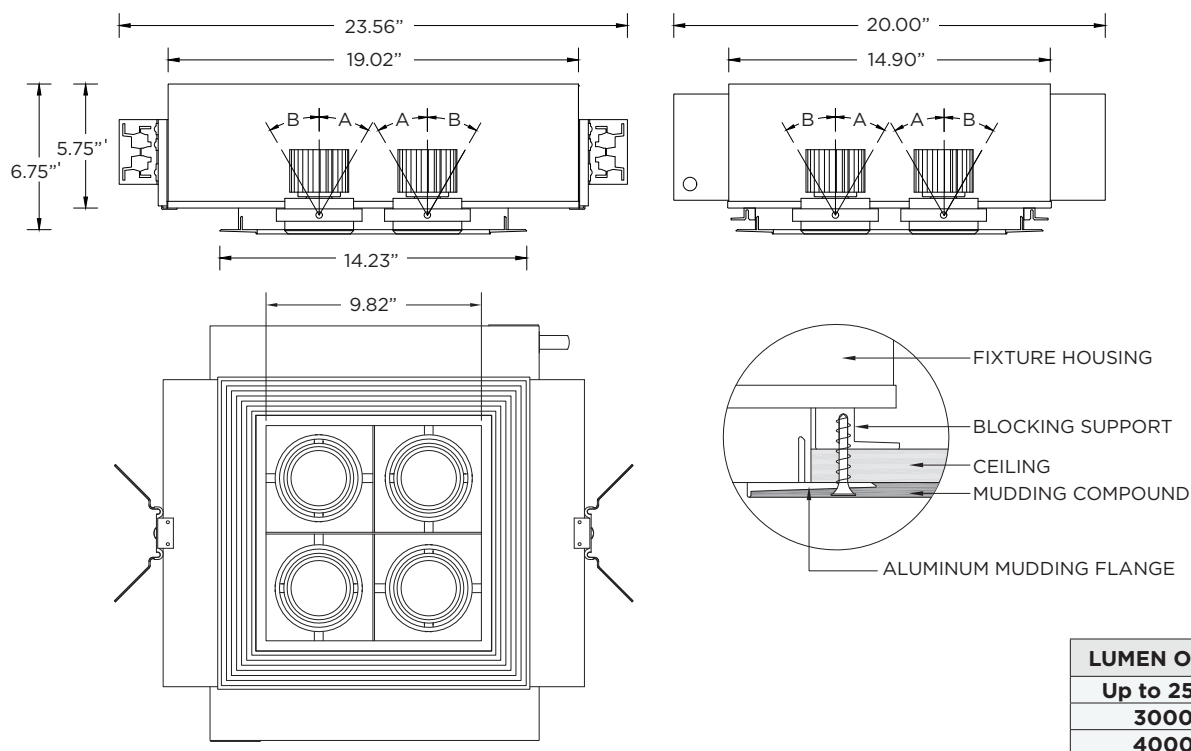
**TRIM HOUSING OPTIONS**

**NC - NEW CONSTRUCTION (NON-IC)**



**TRIMLESS HOUSING OPTIONS**

**NC - NEW CONSTRUCTION (NON-IC)**





## LUMEN OUTPUT REFERENCE CHART

3G has upgraded our LED system and overall performance at no additional cost. We now offer 95+CRI as standard. All lumen outputs are delivered lumens. This new LED system is more efficient than our previous 80CRI, 90CRI, and 97CRI options. Please use these charts to cross-reference old lumen outputs with our new, 95+CRI lumen output options

### 80CRI REFERENCE CHARTS

MATCH THE GRADIENT SHADE FROM THE OLD LUMEN OUTPUT CHART TO THE NEW LUMEN OUTPUT OPTION

OLD 80CRI SPECS			
LUMEN OUTPUT	DELIVERED LUMENS	SYSTEM WATTS	EFFICACY (LPW)
1000	1080	10.3	105
1500	1444	14.0	103
2200	2089	22.0	95
3000	2815	31.1	90
4000	3958	43.0	92

NEW 95+CRI SPECS			
LUMEN OUTPUT	DELIVERED LUMENS	SYSTEM WATTS	EFFICACY (LPW)
1000	1000	8.1	123
1500	1500	12.3	122
2000	2000	16.2	123
2500	2500	20.5	122
3000	3000	25.8	116
4000	4000	34.2	117

### 90CRI REFERENCE CHARTS

MATCH THE GRADIENT SHADE FROM THE OLD LUMEN OUTPUT CHART TO THE NEW LUMEN OUTPUT OPTION

OLD 90CRI SPECS			
LUMEN OUTPUT	DELIVERED LUMENS	SYSTEM WATTS	EFFICACY (LPW)
1000	951	10.3	92
1500	1271	14.0	91
2200	1838	22.0	84
3000	2477	31.1	79
4000	3483	43.0	81

NEW 95+CRI SPECS			
LUMEN OUTPUT	DELIVERED LUMENS	SYSTEM WATTS	EFFICACY (LPW)
1000	1000	8.1	123
1500	1500	12.3	122
2000	2000	16.2	123
2500	2500	20.5	122
3000	3000	25.8	116
4000	4000	34.2	117