

3G LIGHTING

3G-DL45RWW

4" ROUND WALL WASH DOWNLIGHT
TUNABLE WHITE

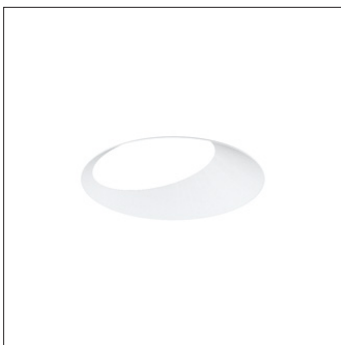
Standard 90+ CRI Tunable White LED system (2700K-6500K)
Regressed LED source for enhanced glare control
Proprietary wall wash optic and lens
Available with Lutron Awn for wireless control
Companion to 3G's Cylinder, G-RO, and 3Gi product families



TRIM FLANGE



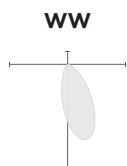
TRIMLESS



MILLWORK



OPTICS



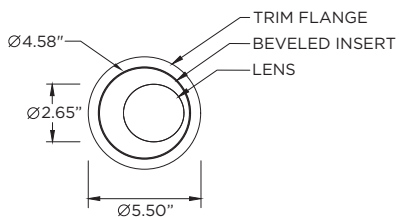
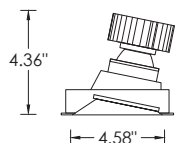
PERFORMANCE

LUMEN OUTPUT	DELIVERED LUMENS	SYSTEM WATTS	EFFICACY (LPW)
750	750	15.3	49
1000	1000	20.6	49
1250	1250	26.8	47

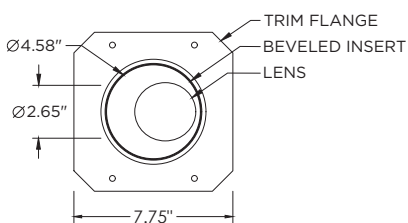
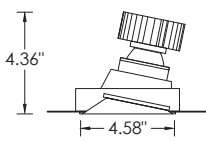
BASED ON 90+ CRI, 3000K, WW OPTIC
Lumen output and actual wattage may vary +/- 5%

DIMENSIONS

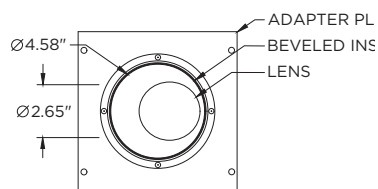
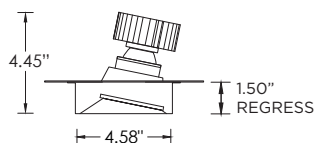
TRIM FLANGE



TRIMLESS



MILLWORK



PROJECT:		TYPE:	
CATALOG#:		DATE:	QTY:

CAT. NO	LED SOURCE	LUMEN OUTPUT	CRI	BEAM ANGLE	VOLTAGE
3G-DL45RWW	TW - TUNABLE WHITE (2700K-6500K)	07 - 750 LUMENS 10 - 1000 LUMENS 12 - 1250 LUMENS	H90 - 90+ CRI	WW - WALL WASH	UNV - 120/277V
		All lumen outputs are delivered lumens at 90+ CRI			

DRIVER	FLANGE TYPE	BEVELED INSERT	HOUSING TYPE
DO1 - 0-10V (100-0.1%) DALI - DALI (100-1%) DT8 - DALI TYPE 8 (100-0.1%) ¹ DMX - DMX (100-0%)	WT - WHITE TRIM BT - BLACK TRIM ST - SILVER TRIM XTR - TRIMLESS (MUD-IN DRYWALL) MWF - FLANGELESS ² MILLWORK	WI - WHITE BI - BLACK SI - SILVER	RMD - REMODEL (NON-IC) NCF - NEW CONSTRUCTION FRAME (NON-IC) NC - NEW CONSTRUCTION HOUSING IC - NEW CONSTRUCTION ³ IC HOUSING NCF housing ship with nailer type bar hangers. NC and IC housings available with optional C-channel bar hangers

OPTIONS
AWN - LUTRON ATHENA RF NODE ⁴ CP - CHICAGO PLENUM ⁵ BH - C-CHANNEL BAR HANGERS EMR - EMERGENCY BATTERY (REMOTE) ⁶ EMB - INTEGRAL EMERGENCY BATTERY ⁷ (ABOVE CEILING ACCESS REQUIRED)



Lutron Athena Wireless Node (AWN) available with DT8 (Dali Type 8) driver only, See page 8 for more details

- ¹ DT8 (DALI Type 8) required for Lutron AWN option
- ² MWF not available with Remodel (NON-IC)
- ³ New Construction IC housing available up to 750lm
- ⁴ Available with DT8 (DALI Type 8) driver only. Available with NCF (New construction frame) and RMD (Remodel) housings only. Not available with EMR or EMB
- ⁵ Chicago Plenum option available with New Construction Housing
- ⁶ Enclosure supplied with Emergency Battery and driver. Installed remotely by others. Not accessible through fixture aperture. LED operates at 6500K
- ⁷ Available with NCF housing option only. Above ceiling access required. Not accessible through fixture aperture. LED operates at 6500K

PERFORMANCE

LUMEN OUTPUT	DELIVERED LUMENS	SYSTEM WATTS	EFFICACY (LPW)
750	750	15.3	49
1000	1000	20.6	49
1250	1250	26.8	47

BASED ON 90+ CRI, 3000K, WW OPTIC

Lumen output and actual wattage may vary +/- 5%

HOUSING

Remodel, new construction frame, new construction and IC housing options available

Maximum ceiling thickness of 1.5". Consult factory for modifications

All housing options (except millwork) designed to be easily converted in field to trim or trimless with minimal components
Housing rated for #12 AWG (4 in, 4 out), 90°C conductors and through branch wiring

BEVELED INSERT

Cast aluminum beveled insert with matte powder coated finish
Regressed LED source for enhanced glare control

TRIM

Machined aluminum trim flange with matte powder coated finish and minimal 0.375" overlap

TRIMLESS

Mudding flange features a perforated surface for easy mud-in application
Integral blocking support provided to ensure fixture is properly secured within ceiling structure

OPTICS

Proprietary wall wash optic
Asymmetrical lens provides uniformity and smooth illumination across and down the wall
Regressed LED source for enhanced glare control

LED SYSTEM

Standard 90+ CRI
Tunable White (2700K-6500K)
Color consistency <3 SDCM
L90 > 42,000 hours

ELECTRICAL

Standard 0-10V, constant current drivers
100-0.1% dimming range and >0.9 power factor
Standard 120/277V universal voltage with several driver options
Integral drivers are easily accessible through luminaire aperture

EMERGENCY

7W output for 90 minutes (+/- 340lm at 90+ CRI). Title 24 Certified
Integral emergency battery (above ceiling access required)
Remote emergency battery (not accessible through fixture aperture)
Maximum remote mounting distance:
3000lm or below - 50ft (12AWG) or 25ft (14AWG)
Caution: Emergency Battery utilizes more than one power source and servicing should be performed by qualified personnel

MOUNTING

Trim fixture designed for use in drywall, wood, acoustic, and other architectural ceilings
Trimless fixture designed for use in drywall, mud-in ceiling applications
Recommended cut-out for Millwork Flangeless option (4.78")
Recommended cut-out for other housing options (5.125")
New construction frame ship with nailer type bar hangers (14" to 26" extension)
Optional C-Channel bar hangers available for NC and IC housing options

LISTING

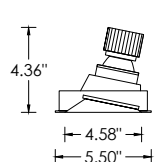
ETL listed and conforms to UL1598 standard
Certified to CSA22.2 NO.250.0.
Rated for dry or damp locations

WARRANTY

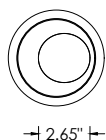
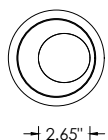
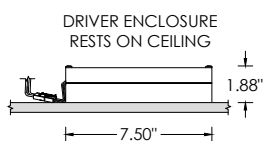
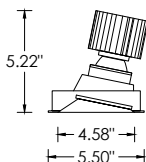
5 year limited warranty
LED system rated for operation in ambient environments up to 25°C

RMD - REMODEL (NON-IC)

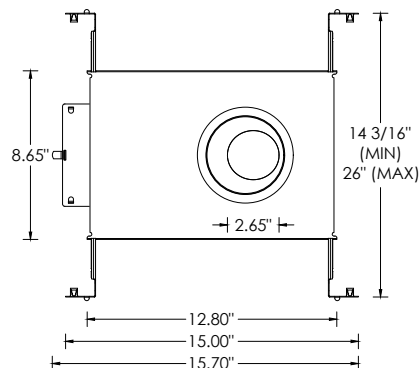
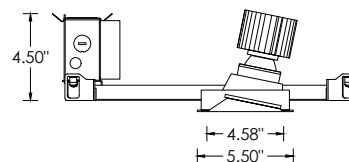
750lm - 1000lm



1250lm

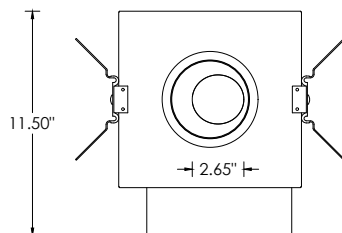
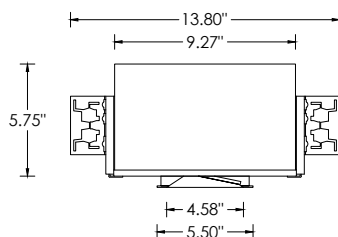


NCF - NEW CONSTRUCTION FRAME (NON-IC)



NC- NEW CONSTRUCTION HOUSING (NON-IC AND CP RATED)

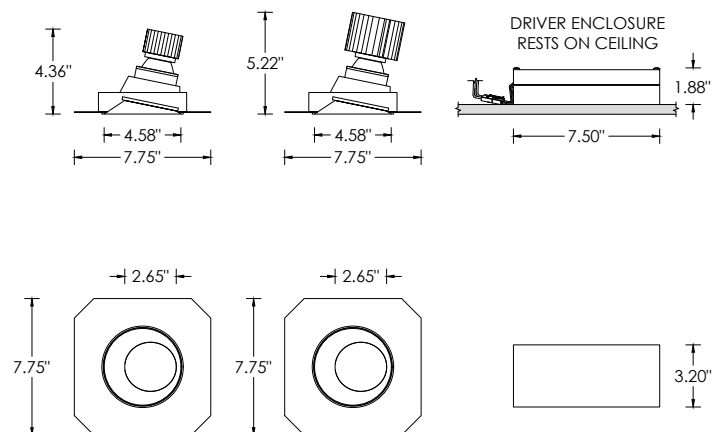
IC - NEW CONSTRUCTION IC HOUSING (750LM MAX)



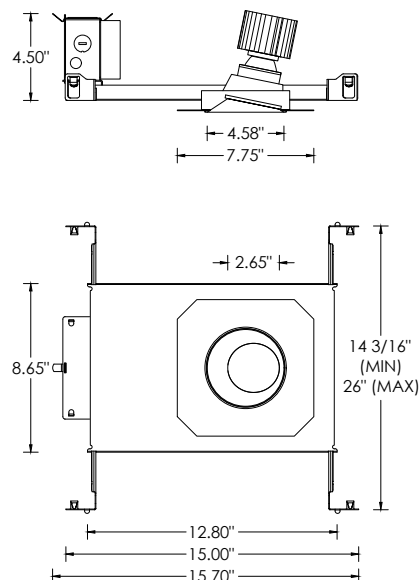
RMD - REMODEL (NON-IC)

750lm - 1000lm

1250lm

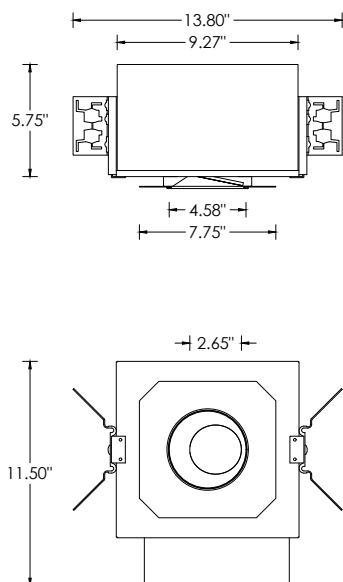


NCF - NEW CONSTRUCTION FRAME (NON-IC)

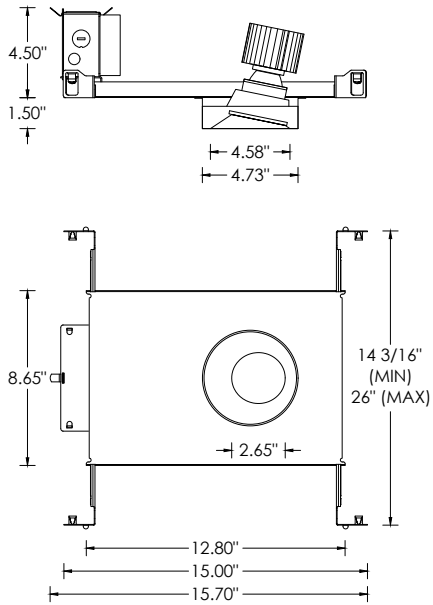


NC- NEW CONSTRUCTION HOUSING (NON-IC AND CP RATED)

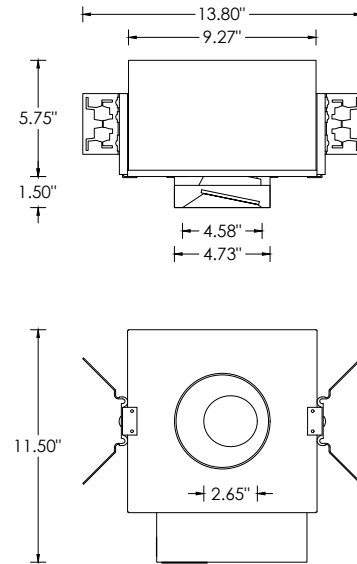
IC - NEW CONSTRUCTION IC HOUSING (750LM MAX)



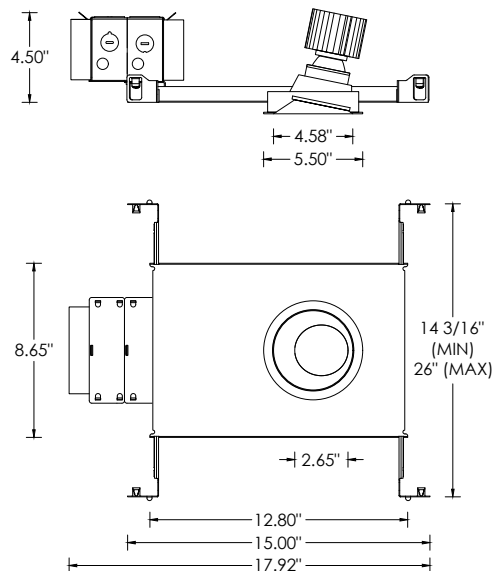
NCF - NEW CONSTRUCTION FRAME (NON-IC)



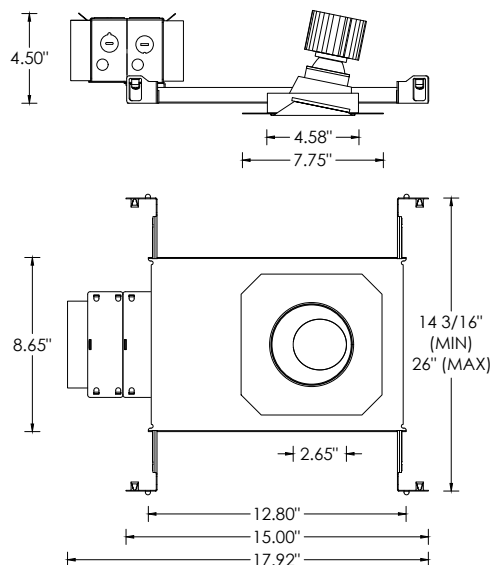
NC- NEW CONSTRUCTION HOUSING (NON-IC AND CP RATED)
IC - NEW CONSTRUCTION IC HOUSING (750LM MAX)



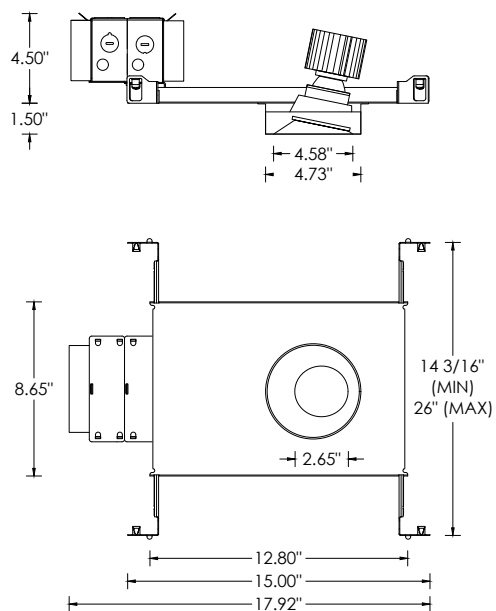
TRIM



XTR - TRIMLESS (MUD-IN DRYWALL)



MWF - FLANGELESS MILLWORK



The Athena wireless node (AWN) is a radio frequency (RF) device that enables simple, digital control of individual light fixtures in an Athena or myRoom XC control system. AWN is offered as a factory-installed RF control option across select 3G luminaires.

The Athena wireless processor or Clear Connect gateway – Type X is required to operate an Athena wireless node in an Athena or myRoom XC control system via a simple setup process using an iOS® or Android® compatible app. This enables these fixtures to be controllable by other Lutron wall controls, keypads, sensors, Pico remote controls, etc



AWN
RF NODE ONLY
FACTORY-INSTALLED
FOR INDIVIDUAL
FIXTURE CONTROL



HOUSING AND DRIVER COMPATIBILITY

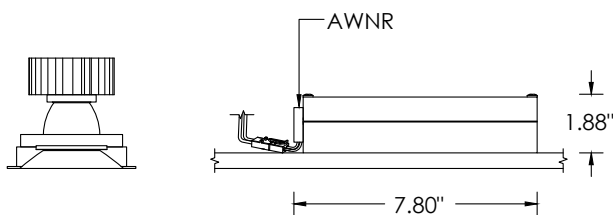
Housing types:

- NCF (New Construction, non-IC)
- RMD (Remodel, non-IC)

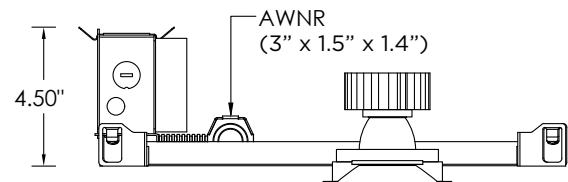
Driver / dimming types:

- DT8 - DALI TYPE 8 (100-0.1%)

RMD - REMODEL (NON-IC)



NCF - NEW CONSTRUCTION FRAME (NON-IC)



DEFAULT BEHAVIOR PRIOR TO PROGRAMMING

Light level defaults to 100%

Device runs an unprogrammed startup sequence until added to the Athena system

RF PLACEMENT (FIELD GUIDELINE)

Each node should be installed within 25 ft (7.6 m) of two or more Clear Connect – Type X devices (nodes / gateways / processors)
Follow Lutron Athena design guidelines for device density and coverage

SERVICING

Access for service is at the fixture's driver box accessible through the luminaire aperture

If the AWNR node is replaced, it must be re-added / re-commissioned within the Athena system by the controls contractor.