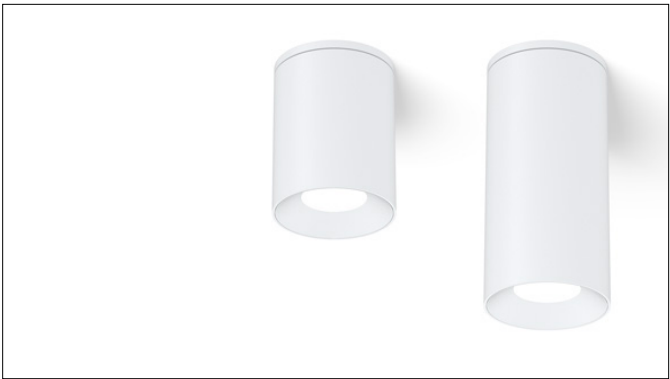




3GQ-SDL45RF

4" DOWNLIGHT CYLINDER
7" AND 11" HEIGHT

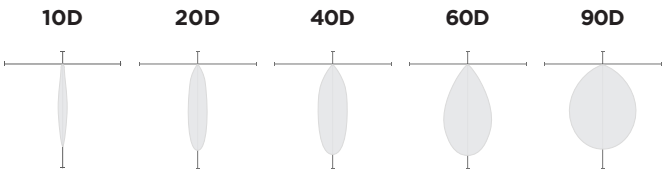
4" diameter, high performance cylinder with upgraded performance
Standard 95+ CRI LED system with performance up to 120 LPW
Delivered lumen range up to 2500lm at 95+ CRI
Regressed LED source with enhanced glare control
10° to 90° beam angle options suitable for various applications
Twist and lock extruded aluminum construction with no visible hardware
Companion to 3G's DL45R series downlight family



10 DAY QUICKSHIP

MAX ORDER SIZE: 50 pcs

OPTICS

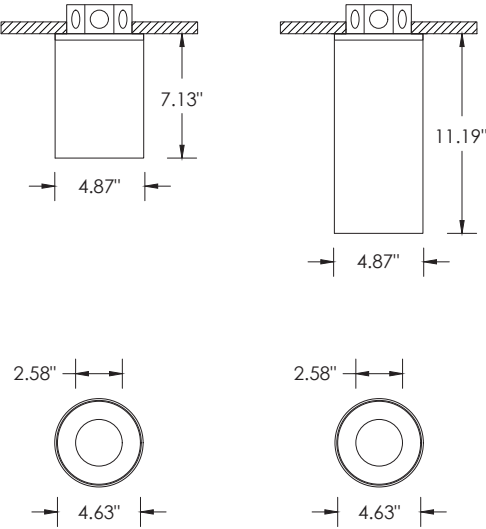


PERFORMANCE

LUMEN OUTPUT	DELIVERED LUMENS	SYSTEM WATTS	EFFICACY (LPW)
1000	1000	8.5	118
1500	1500	13.1	115
2000	2000	17.8	113
2500	2500	22.7	110

BASED ON 95+ CRI, 3500K, 20D OPTIC WITH SOFTENING LENS
Lumen output and actual wattage may vary +/- 5%

DIMENSIONS





01/22/2026



3GQ-SDL45RF

4" DOWNLIGHT CYLINDER - 7" AND 11" HEIGHT

PERFORMANCE | TECHNICAL

PERFORMANCE

LUMEN OUTPUT	DELIVERED LUMENS	SYSTEM WATTS	EFFICACY (LPW)
1000	1000	8.5	118
1500	1500	13.1	115
2000	2000	17.8	113
2500	2500	22.7	110

BASED ON 95+ CRI, 3500K, 20D OPTIC WITH SOFTENING LENS
Lumen output and actual wattage may vary +/- 5%

MULTIPLIERS

BEAM ANGLE	
10D	0.97
20D	1.00
40D	0.94
60D	0.95
90D	0.90

COLOR TEMP	
3000K	1.00
3500K	1.00
4000K	1.02

HOUSING

Extruded aluminum housing with powder coated finish
Twist and lock construction with no visible hardware

BEVELED INSERT

Machined aluminum beveled insert
Solid aluminum double gimbal with dual axis adjustability (15°x15°)

OPTICS

Proprietary anodized, aluminum reflectors
Beam angle available in 10°, 20°, 40° and 60°, and 90°
Reflectors are field replaceable
10° and 20° reflectors are multi-faceted (not interchangeable with other options)

LED SYSTEM

Standard 95+ CRI
Color consistency <2 SDCM
Available in 27K, 30K, 35K, and 40K
L90 > 50,000 hours

ELECTRICAL

Standard 0-10V, constant current drivers
100-1% dimming range and >0.9 power factor
Integral drivers are easily accessible through luminaire aperture

MOUNTING

All hardware included for mounting to 4" octagonal junction box
Twist and lock mechanism with no visible hardware

LISTING

ETL listed and conforms to UL1598 standard
Certified to CSA22.2 NO.250.0.
Rated for dry or damp locations

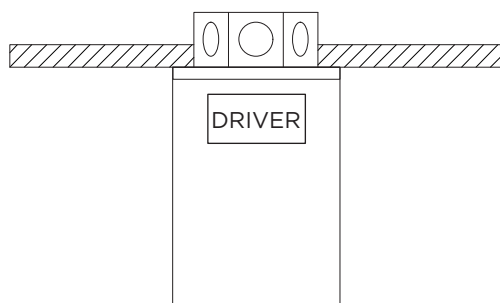
WARRANTY

5 year limited warranty
LED system rated for operation in ambient environments up to 25°C

DRAWINGS & DIMENSIONS

STANDARD CANOPY

RECESSED J-BOX (BY OTHERS)



STANDARD CANOPY

SURFACE J-BOX (BY OTHERS)

