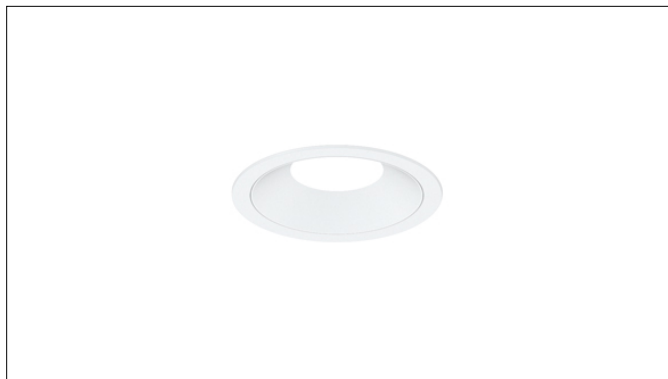


# 3G LIGHTING

## 3G-DL33RF

3" ROUND FIXED  
DOWNLIGHT

Standard 95+ CRI LED system with performance up to 150 LPW  
Delivers up to 3886lm at 95+ CRI  
Regressed LED source for enhanced glare control  
10° to 90° beam angle options suitable for various applications  
Title 24 JA8 certified with maximum 1500lm output  
Available with Lutron Awn for wireless control  
Companion to 3G's Cylinder, G-RO, and 3Gi product families



### TRIM FLANGE



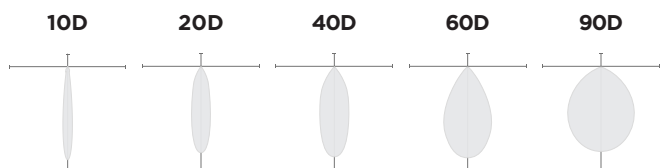
### TRIMLESS



### MILLWORK



### OPTICS



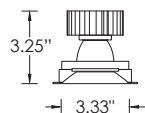
### PERFORMANCE

LUMEN OUTPUT	DELIVERED LUMENS	SYSTEM WATTS	EFFICACY (LPW)
1000	1000	8.6	116
1500	1500	13.5	111
2000	2000	18.3	109
2500	2500	25.8	97
3000	3000	31.2	96

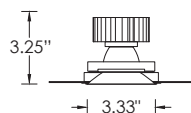
BASED ON 95+ CRI, 3500K, 40D OPTIC WITH SOFTENING LENS  
Lumen output and actual wattage may vary +/- 5%

### DIMENSIONS

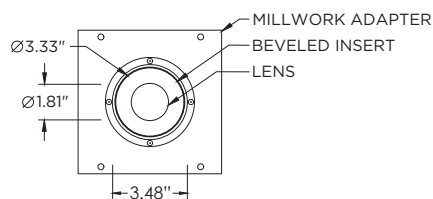
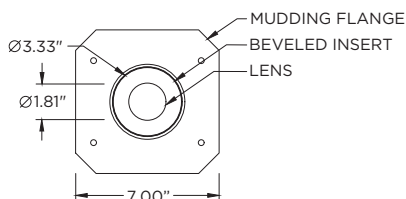
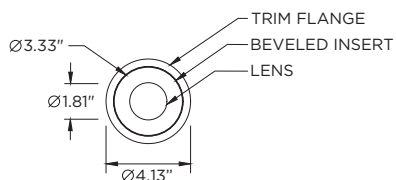
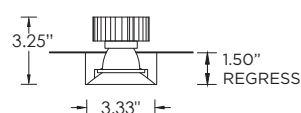
#### TRIM FLANGE



#### TRIMLESS



#### MILLWORK



<b>PROJECT:</b>				<b>TYPE:</b>			
<b>CATALOG#:</b>				<b>DATE:</b>		<b>QTY:</b>	

CAT. NO	LUMEN OUTPUT	CRI	COLOR TEMP	BEAM ANGLE	VOLTAGE
<b>3G-DL33RF</b>	<b>10</b> - 1000 LUMENS <b>15</b> - 1500 LUMENS <b>20</b> - 2000 LUMENS <b>25</b> - 2500 LUMENS <b>30</b> - 3000 LUMENS  <small>All lumen outputs are delivered lumens at 95+ CRI</small>	<b>H95</b> - 95+ CRI	<b>27K</b> - 2700K <b>30K</b> - 3000K <b>35K</b> - 3500K <b>40K</b> - 4000K	<b>10D</b> - 10° <sup>1</sup> <b>20D</b> - 20° <sup>1</sup> <b>40D</b> - 40° <b>60D</b> - 60° <b>90D</b> - 90° <sup>2</sup>	<b>UNV</b> - 120/277V <b>120</b> - 120V <b>347</b> - 347V <sup>3</sup>

DRIVER	FLANGE TYPE	BEVELED INSERT	HOUSING TYPE
<b>DIM</b> - 0-10V (100-1%) <b>LE</b> - PHASE DIM <sup>4</sup> <small>(TRIAC/ELV, 100-1%)</small> <b>DO1</b> - 0-10V (100-0.1%) <b>DALI</b> - DALI (100-1%) <sup>5</sup> <b>DMX</b> - DMX (100-0%) <b>DHL2</b> - LUTRON HI-LUME LDE1 <small>(1% ECOSYSTEM)</small>	<b>WT</b> - WHITE TRIM <b>BT</b> - BLACK TRIM <b>ST</b> - SILVER TRIM <b>XTR</b> - TRIMLESS <small>(MUD-IN DRYWALL)</small> <b>MWF</b> - FLANGELESS (MILLWORK) <sup>6</sup>	<b>WI</b> - WHITE <b>BI</b> - BLACK <b>SI</b> - SILVER	<b>RMD</b> - REMODEL (NON-IC) <b>NCF</b> - NEW CONSTRUCTION FRAME (NON-IC) <b>SH</b> - SHALLOW HOUSING <sup>7</sup> <small>(IC RATED)</small> <b>NC</b> - NEW CONSTRUCTION HOUSING <b>IC</b> - NEW CONSTRUCTION <sup>7</sup> <small>IC HOUSING</small>  <small>NCF and SH housings ship with nailer type bar hangers. NC and IC housings available with optional C-channel bar hangers</small>

OPTIONS
<b>AWNR</b> - LUTRON ATHENA RF NODE <sup>8</sup> <b>SF</b> - SOFTENING LENS (SUPPLIED STANDARD) <sup>9</sup> <b>HX</b> - HEXCELL LOUVER <b>SB</b> - SANDBLASTED LENS <b>LS</b> - LINEAR SPREAD LENS <b>WL</b> - WET LOCATION RATED <b>CP</b> - CHICAGO PLENUM <sup>10</sup> <b>BH</b> - C-CHANNEL BAR HANGERS <b>EMR</b> - EMERGENCY BATTERY (REMOTE) <sup>11</sup> <b>EMB</b> - INTEGRAL EMERGENCY BATTERY <sup>12</sup> <small>(ABOVE CEILING ACCESS REQUIRED)</small>  <small>Maximum 2 optical accessories</small>



JA8 (Title 24) Listing available with 1500lm maximum  
Driver options include "DIM" (0-10V) and "LE" (Phase dimming)



Lutron Athena Wireless Node (AWN) available with DIM  
(0-10V) driver option  
See page 8 for more details

- <sup>1</sup> 10D and 20D reflector available up to 2000lm
- <sup>2</sup> 90D lens optic not available with other lens options
- <sup>3</sup> 347 available in "DIM" 0-10V only (100-1%)
- <sup>4</sup> Phase dimming options available in 120V only
- <sup>5</sup> DALI-2 (Type 6) provided as standard
- <sup>6</sup> MWF not available with Remodel (NON-IC)
- <sup>7</sup> Shallow Housing and New Construction IC housing available up to 2000lm
- <sup>8</sup> Available with DIM driver options. Available with NCF (New construction frame) and RMD (Remodel) housings only
- <sup>9</sup> Softening lens not provided with 90D optic
- <sup>10</sup> Chicago Plenum option available with Shallow Housing (2000lm max) and New Construction Housing
- <sup>11</sup> Supplied with enclosure with Emergency Battery and driver. Installed remotely by others. Not accessible through fixture aperture
- <sup>12</sup> Available with NCF (New construction frame housing) only. Above ceiling access required. Not accessible through fixture aperture

## PERFORMANCE

LUMEN OUTPUT	DELIVERED LUMENS	SYSTEM WATTS	EFFICACY (LPW)
1000	1000	8.6	116
1500	1500	13.5	111
2000	2000	18.3	109
2500	2500	25.8	97
3000	3000	31.2	96

BASED ON 95+ CRI, 3500K, 40D OPTIC WITH SOFTENING LENS  
Lumen output and actual wattage may vary +/- 5%

## HOUSING

Remodel, new construction frame, shallow housing, new construction and IC housing options available  
Maximum ceiling thickness of 1.5". Consult factory for modifications  
All housing options (except millwork) designed to be easily converted in field to trim or trimless with minimal components  
Housing rated for #12 AWG (4 in, 4 out), 90°C conductors and through branch wiring

## BEVELED INSERT

Cast aluminum beveled insert with matte powder coated finish  
Regressed LED source for enhanced glare control

## TRIM

Machined aluminum trim flange with matte powder coated finish and minimal 0.375" overlap

## TRIMLESS

Mudding flange features a perforated surface for easy mud-in application  
Integral blocking support provided to ensure fixture is properly secured within ceiling structure

## OPTICS

Proprietary anodized, aluminum reflectors  
Beam angle available in 10°, 20°, 40°, 60° and 90°  
Reflectors are field replaceable (10° and 20° reflector not interchangeable)  
Softening lens supplied standard

## LED SYSTEM

Standard 95+ CRI  
Color consistency <2 SDCM  
Available in 27K, 30K, 35K, and 40K  
L90 > 105,000 hours

## MULTIPLIERS

BEAM ANGLE	
10D	0.92
20D	1.27
40D	1.00
60D	0.96
90D	0.90

COLOR TEMP	
2700K	0.98
3000K	1.00
3500K	1.00
4000K	1.02

## ELECTRICAL

Standard 0-10V, constant current drivers  
100-1% dimming range and >0.9 power factor  
Standard 120/277V universal voltage with several driver options  
120V Forward Phase/Reverse Phase driver option (100-1%)  
Integral drivers are easily accessible through luminaire aperture

## EMERGENCY

7W output for 90 minutes (+/- 800lm at 95+ CRI). Title 24 Certified  
Integral emergency battery (above ceiling access required)  
Remote emergency battery (not accessible through fixture aperture)  
Maximum remote mounting distance:  
3000lm or below - 50ft (12AWG) or 25ft (14AWG)  
Above 3000lm - 30ft (12AWG) or 20ft (14AWG)  
Caution: Emergency Battery utilizes more than one power source and servicing should be performed by qualified personnel

## MOUNTING

Trim fixture designed for use in drywall, wood, acoustic, and other architectural ceilings  
Trimless fixture designed for use in drywall, mud-in ceiling applications  
Recommended cut-out for Millwork Flangeless option (3.525")  
Recommended cut-out for other housing options (3.813")  
New construction frame and IC rated shallow housing ship with nailer type bar hangers (14" to 26" extension)  
Optional C-Channel bar hangers available for NC and IC housing options

## LISTING

ETL listed and conforms to UL1598 standard  
Certified to CSA22.2 NO.250.0.  
JA8 (Title 24) Listed  
Rated for dry or damp locations

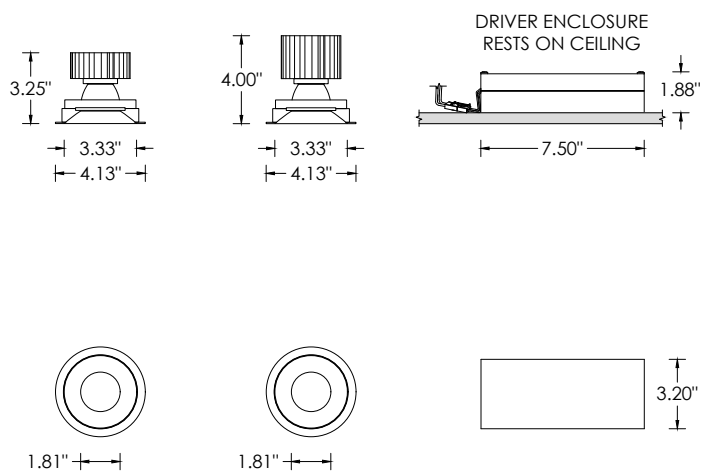
## WARRANTY

5 year limited warranty  
LED system rated for operation in ambient environments up to 25°C

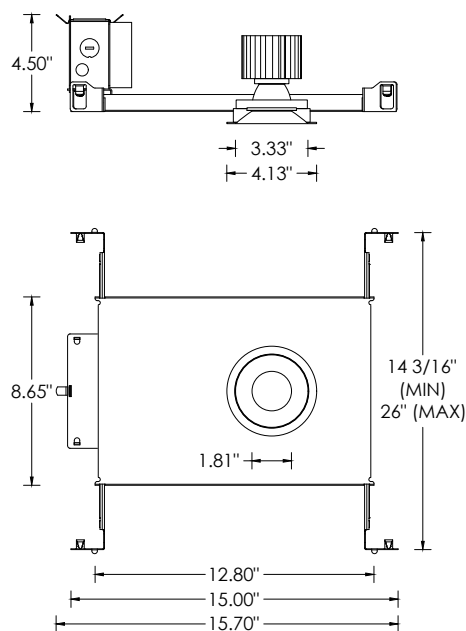
**RMD - REMODEL (NON-IC)**

1500lm max

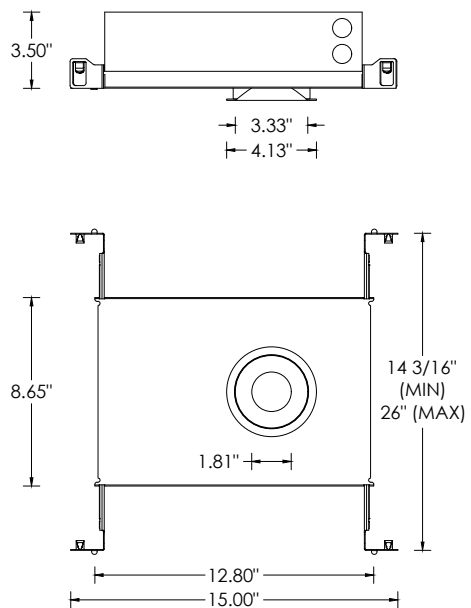
2000lm - 3000lm



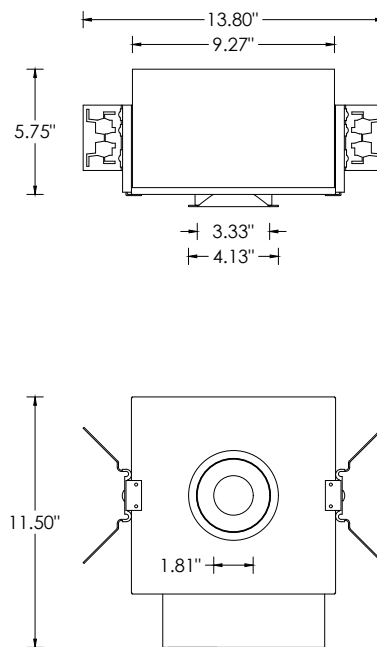
**NCF - NEW CONSTRUCTION FRAME (NON-IC)**



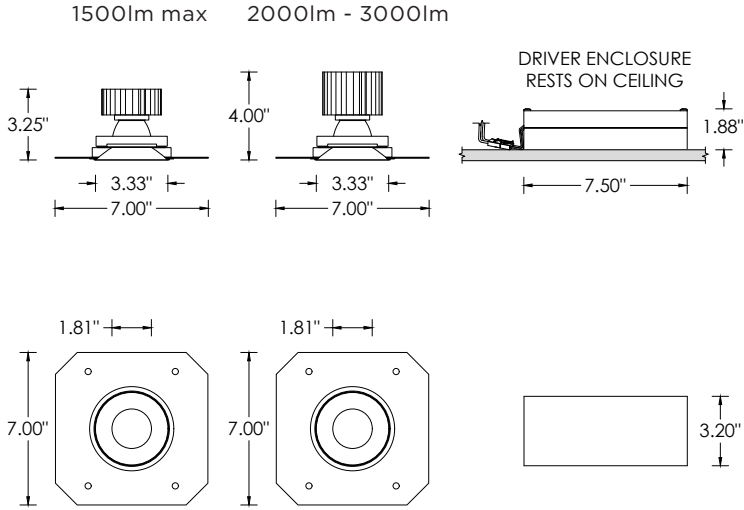
**SH - SHALLOW HOUSING (2000LM MAX)**  
(IC RATED AND CP RATED)



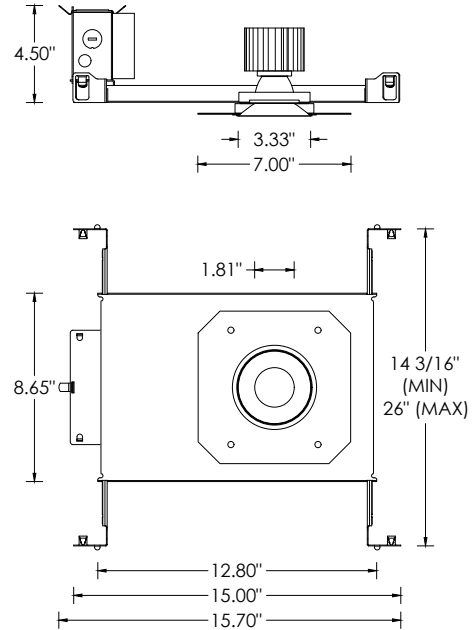
**NC- NEW CONSTRUCTION HOUSING (NON-IC AND CP RATED)**  
**IC - NEW CONSTRUCTION IC HOUSING (2000LM MAX)**



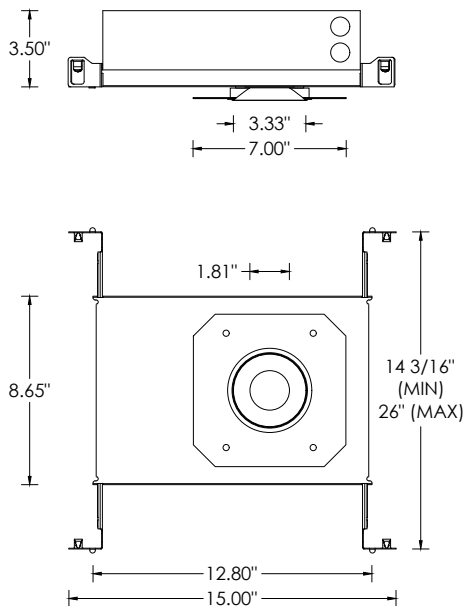
**RMD - REMODEL (NON-IC)**



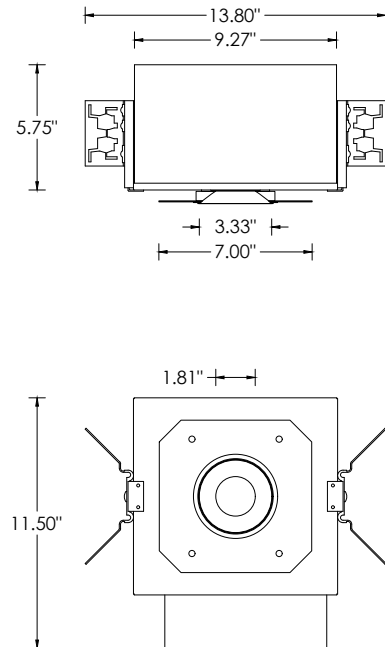
**NCF - NEW CONSTRUCTION FRAME (NON-IC)**



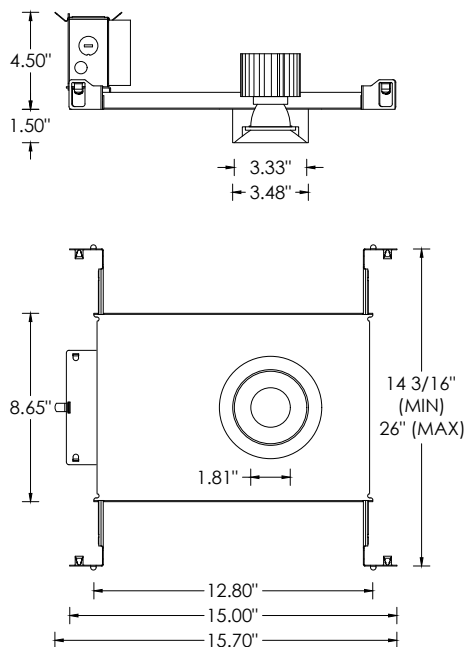
**SH - SHALLOW HOUSING (2000LM MAX)**  
**(IC RATED AND CP RATED)**



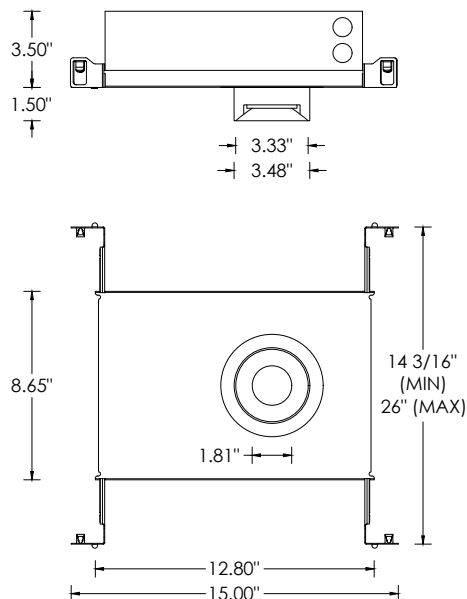
**NC- NEW CONSTRUCTION HOUSING (NON-IC AND CP RATED)**  
**IC - NEW CONSTRUCTION IC HOUSING (2000LM MAX)**



**NCF - NEW CONSTRUCTION FRAME (NON-IC)**

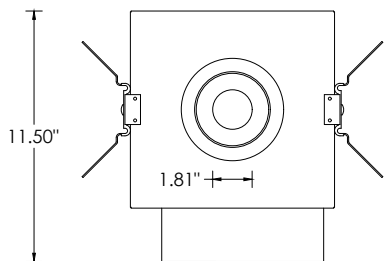
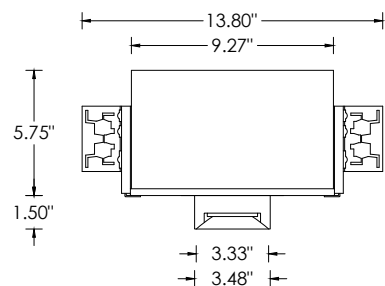


**SH - SHALLOW HOUSING (2000LM MAX)**  
(IC RATED AND CP RATED)

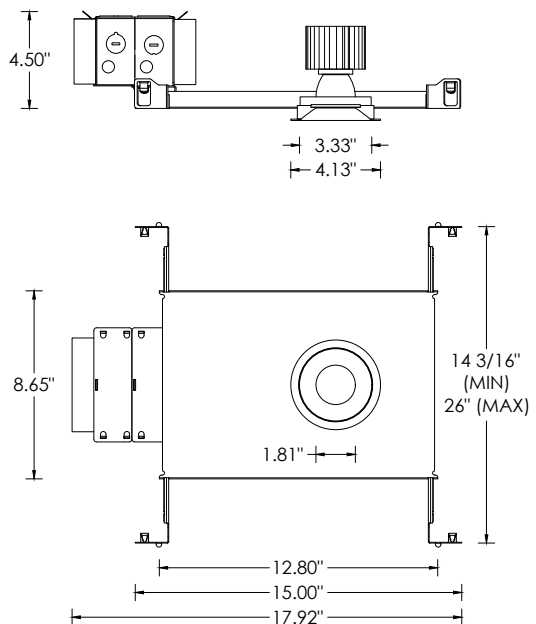


**NC- NEW CONSTRUCTION HOUSING (NON-IC AND CP RATED)**

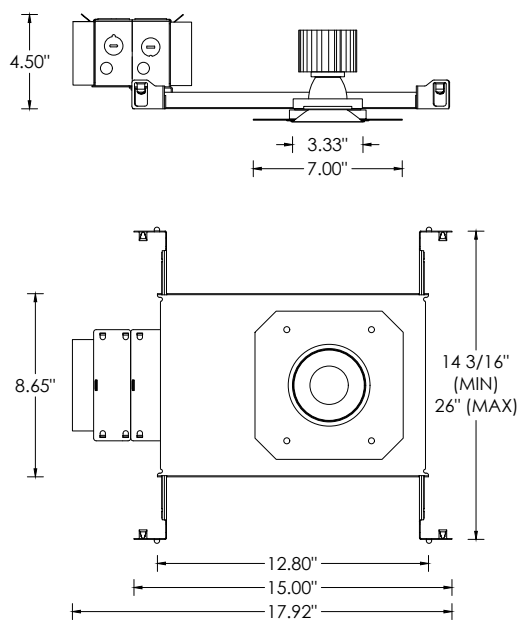
**IC - NEW CONSTRUCTION IC HOUSING (2000LM MAX)**



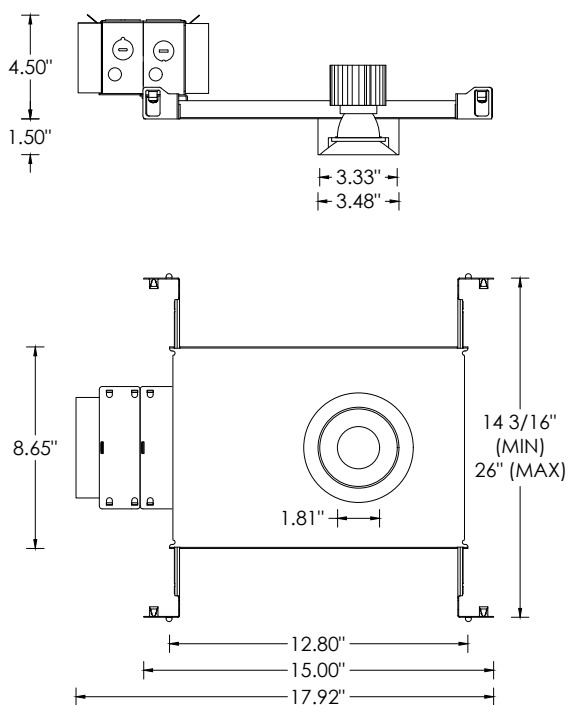
**TRIM**



**XTR - TRIMLESS (MUD-IN DRYWALL)**



**MWF - FLANGELESS MILLWORK**



The Athena wireless node (AWN) is a radio frequency (RF) device that enables simple, digital control of individual light fixtures in an Athena or myRoom XC control system. AWN is offered as a factory-installed RF control option across select 3G luminaires.

The Athena wireless processor or Clear Connect gateway – Type X is required to operate an Athena wireless node in an Athena or myRoom XC control system via a simple setup process using an iOS® or Android® compatible app. This enables these fixtures to be controllable by other Lutron wall controls, keypads, sensors, Pico remote controls, etc



**AWN**  
RF NODE ONLY  
FACTORY-INSTALLED  
FOR INDIVIDUAL  
FIXTURE CONTROL



## HOUSING AND DRIVER COMPATIBILITY

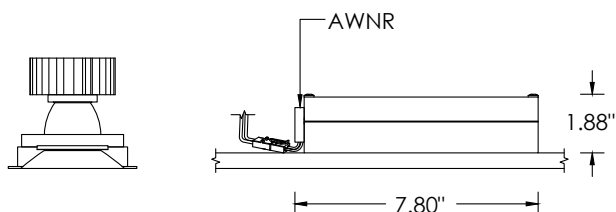
Housing types:

- NCF (New Construction, non-IC)
- RMD (Remodel, non-IC)

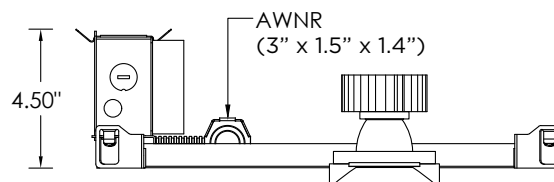
Driver / dimming types:

- DIM - 0-10V (100-1%)

### RMD - REMODEL (NON-IC)



### NCF - NEW CONSTRUCTION FRAME (NON-IC)



## DEFAULT BEHAVIOR PRIOR TO PROGRAMMING

Light level defaults to 100%

Device runs an unprogrammed startup sequence until added to the Athena system

## RF PLACEMENT (FIELD GUIDELINE)

Each node should be installed within 25 ft (7.6 m) of two or more Clear Connect – Type X devices (nodes / gateways / processors)  
Follow Lutron Athena design guidelines for device density and coverage

## SERVICING

Accessible through luminaire aperture

If the Awnr node is replaced, it must be re-added / re-commissioned within the Athena system by the controls contractor.