

3G LIGHTING

3G-DL40SF

4" SQUARE FIXED
DOWNLIGHT

Standard 95+ CRI LED system with performance up to 137 LPW
Delivers up to 3794lm at 95+ CRI, with select configuration
Regressed LED source for enhanced glare control
10° to 90° beam angle options suitable for various applications
Title 24 JA8 certified with maximum 1500lm output
Available with Lutron AWN for wireless control
Companion to 3G's Cylinder, G-RO, and 3Gi product families



TRIM FLANGE



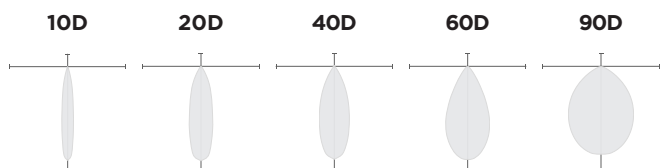
TRIMLESS



MILLWORK



OPTICS



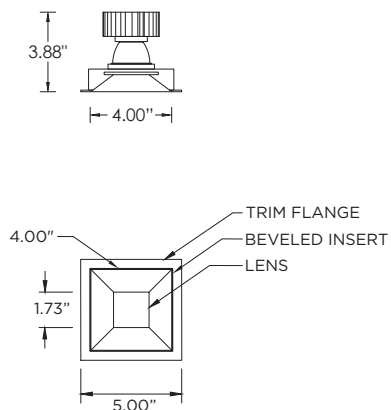
PERFORMANCE

LUMEN OUTPUT	DELIVERED LUMENS	SYSTEM WATTS	EFFICACY (LPW)
1000	1000	9.3	108
1500	1500	14.4	104
2000	2000	20.1	100
2500	2500	25.4	99
3000	3000	32.7	92

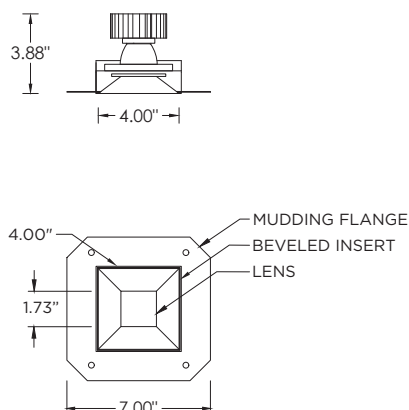
BASED ON 95+ CRI, 3500K, 40D OPTIC WITH SOFTENING LENS
Lumen output and actual wattage may vary +/- 5%

DIMENSIONS

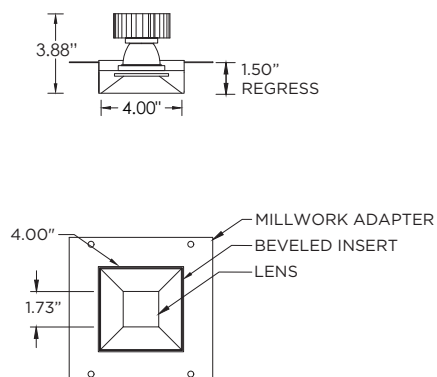
TRIM FLANGE



TRIMLESS



MILLWORK



PROJECT:				TYPE:			
CATALOG#:				DATE:		QTY:	

CAT. NO	LUMEN OUTPUT	CRI	COLOR TEMP	BEAM ANGLE	VOLTAGE
3G-DL40SF	10 - 1000 LUMENS 15 - 1500 LUMENS 20 - 2000 LUMENS 25 - 2500 LUMENS 30 - 3000 LUMENS <small>All lumen outputs are delivered lumens at 95+ CRI</small>	H95 - 95+ CRI	27K - 2700K 30K - 3000K 35K - 3500K 40K - 4000K	10D - 10° ¹ 20D - 20° ¹ 40D - 40° 60D - 60° 90D - 90° ²	UNV - 120/277V 120 - 120V 347 - 347V ³

DRIVER	FLANGE TYPE	BEVELED INSERT	HOUSING TYPE
DIM - 0-10V (100-1%) LE - PHASE DIM ⁴ <small>(TRIAC/ELV, 100-1%)</small> D01 - 0-10V (100-0.1%) DALI - DALI (100-1%) ⁵ DMX - DMX (100-0%) ⁶ DHL2 - LUTRON HI-LUME LDE1 <small>(1% ECOSYSTEM)</small>	WT - WHITE TRIM BT - BLACK TRIM ST - SILVER TRIM XTR - TRIMLESS <small>(MUD-IN DRYWALL)</small> MWF - FLANGELESS (MILLWORK) ⁷	WI - WHITE BI - BLACK SI - SILVER	RMD - REMODEL (NON-IC) NCF - NEW CONSTRUCTION FRAME (NON-IC) SH - SHALLOW HOUSING ⁸ <small>(IC RATED)</small> NC - NEW CONSTRUCTION HOUSING IC - NEW CONSTRUCTION ⁸ <small>IC HOUSING</small> <small>NCF and SH housings ship with nailer type bar hangers. NC and IC housings available with optional C-channel bar hangers</small>

OPTIONS
AWNR - LUTRON ATHENA RF NODE ⁹ SF - SOFTENING LENS (SUPPLIED STANDARD) ¹⁰ HX - HEXCELL LOUVER SB - SANDBLASTED LENS LS - LINEAR SPREAD LENS WL - WET LOCATION RATED CP - CHICAGO PLENUM ¹¹ BH - C-CHANNEL BAR HANGERS EMR - EMERGENCY BATTERY (REMOTE) ¹² EMB - INTEGRAL EMERGENCY BATTERY ¹³ <small>(ABOVE CEILING ACCESS REQUIRED)</small> <small>Maximum 2 optical accessory</small>



JA8 (Title 24) Listing available with 1500lm maximum
Driver options include "DIM" (0-10V) and "LE" (Phase dimming)



Lutron Athena Wireless Node (AWN) available with DIM
(0-10V) driver option
See page 8 for more details

- ¹ 10D and 20D reflector available up to 2000lm
- ² 90D lens optic not available with other lens options
- ³ 347 available in "DIM" 0-10V only (100-1%)
- ⁴ Phase dimming options available in 120V only
- ⁵ DALI-2 (Type 6) provided as standard
- ⁶ 3000lm with DMX driver option available with NC (New Construction housing), RMD (Remodel) and IC (New Construction IC housing) housings only
- ⁷ MWF not available with Remodel (NON-IC)
- ⁸ Shallow Housing and New Construction IC housing available up to 2000lm
- ⁹ Available with DIM driver option. Available with NCF (New construction frame) and RMD (Remodel) housings only
- ¹⁰ Softening lens not provided with 90D optic
- ¹¹ Chicago Plenum option available with Shallow Housing (2000lm max) and New Construction Housing
- ¹² Supplied with enclosure with Emergency Battery and driver. Installed remotely by others. Not accessible through fixture aperture
- ¹³ Available with NCF (New construction frame housing) only. Above ceiling access required. Not accessible through fixture aperture

PERFORMANCE

LUMEN OUTPUT	DELIVERED LUMENS	SYSTEM WATTS	EFFICACY (LPW)
1000	1000	9.3	108
1500	1500	14.4	104
2000	2000	20.1	100
2500	2500	25.4	99
3000	3000	32.7	92

BASED ON 95+ CRI, 3500K, 40D OPTIC WITH SOFTENING LENS
Lumen output and actual wattage may vary +/- 5%

HOUSING

Remodel, new construction frame, shallow housing, new construction and IC housing options available

Maximum ceiling thickness of 1.5". Consult factory for modifications

All housing options (except millwork) designed to be easily converted in field to trim or trimless with minimal components
Housing rated for #12 AWG (4 in, 4 out), 90°C conductors and through branch wiring

BEVELED INSERT

Cast aluminum beveled insert with matte powder coated finish
Regressed LED source for enhanced glare control

TRIM

Cast aluminum trim flange with matte powder coated finish and minimal 0.375" overlap

TRIMLESS

Mudding flange features a perforated surface for easy mud-in application
Integral blocking support provided to ensure fixture is properly secured within ceiling structure

OPTICS

Proprietary anodized, aluminum reflectors

Beam angle available in 10°, 20°, 40°, 60° and 90°

Reflectors are field replaceable (10° and 20° reflector not interchangeable)

Softening lens supplied standard

LED SYSTEM

Standard 95+ CRI

Color consistency <2 SDCM

Available in 27K, 30K, 35K, and 40K

L90 > 50,000 hours

MULTIPLIERS

BEAM ANGLE	
10D	0.84
20D	1.24
40D	1.00
60D	1.00
90D	0.89

COLOR TEMP	
2700K	0.98
3000K	1.00
3500K	1.00
4000K	1.02

ELECTRICAL

Standard 0-10V, constant current drivers

100-1% dimming range and >0.9 power factor

Standard 120/277V universal voltage with several driver options

120V Forward Phase/Reverse Phase driver option (100-1%)

Integral drivers are easily accessible through luminaire aperture

EMERGENCY

7W output for 90 minutes (+/- 750lm at 95+ CRI). Title 24 Certified
Integral emergency battery (above ceiling access required)

Remote emergency battery (not accessible through fixture aperture)

Maximum remote mounting distance:

3000lm or below - 50ft (12AWG) or 25ft (14AWG)

Caution: Emergency Battery utilizes more than one power source and servicing should be performed by qualified personnel

MOUNTING

Trim fixture designed for use in drywall, wood, acoustic, and other architectural ceilings

Trimless fixture designed for use in drywall, mud-in ceiling applications

Recommended cut-out for Millwork Flangeless option (4.688"x4.688")

Recommended cut-out for other housing options (5.063"x5.063")

New construction frame and IC rated shallow housing ship with nailer type bar hangers (14" to 26" extension)

Optional C-Channel bar hangers available for NC and IC housing options

LISTING

ETL listed and conforms to UL1598 standard

Certified to CSA22.2 NO.250.0.

JA8 (Title 24) Listed

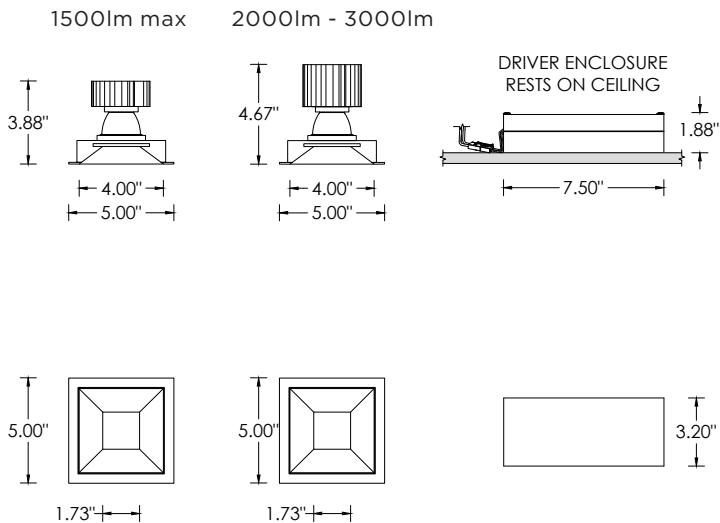
Rated for dry or damp locations

WARRANTY

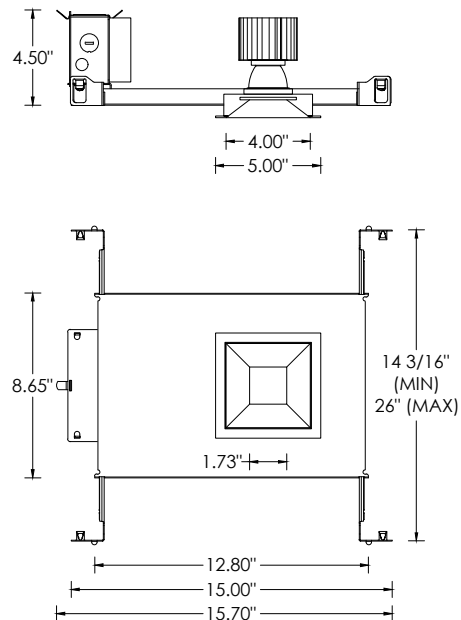
5 year limited warranty

LED system rated for operation in ambient environments up to 25°C

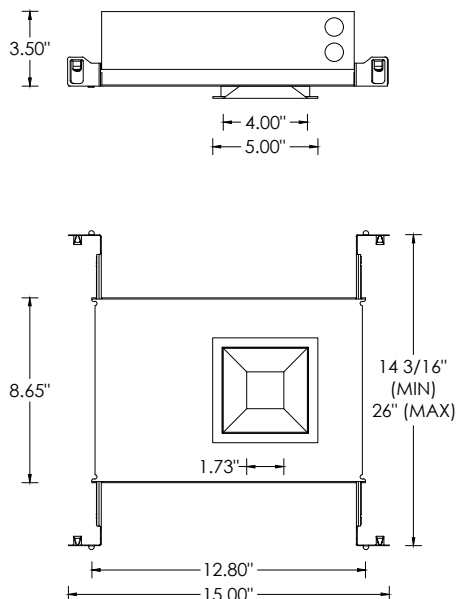
RMD - REMODEL (NON-IC)



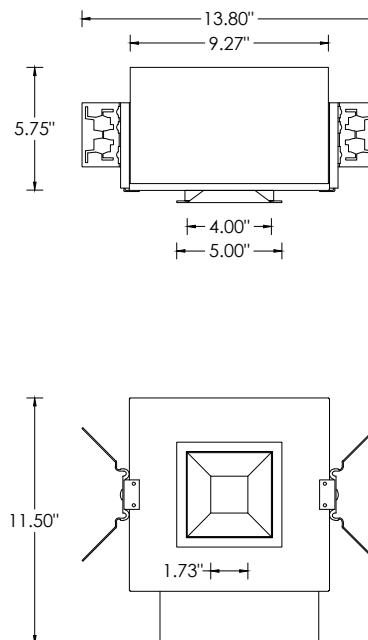
NCF - NEW CONSTRUCTION FRAME (NON-IC)



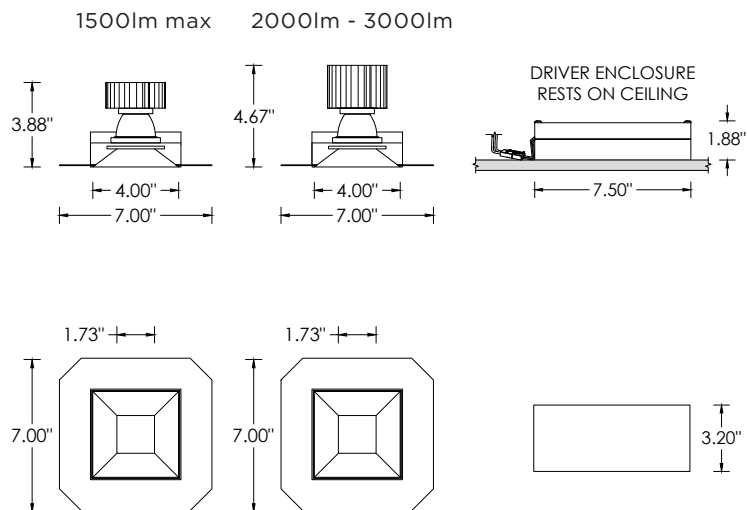
SH - SHALLOW HOUSING (2000LM MAX)
(IC RATED AND CP RATED)



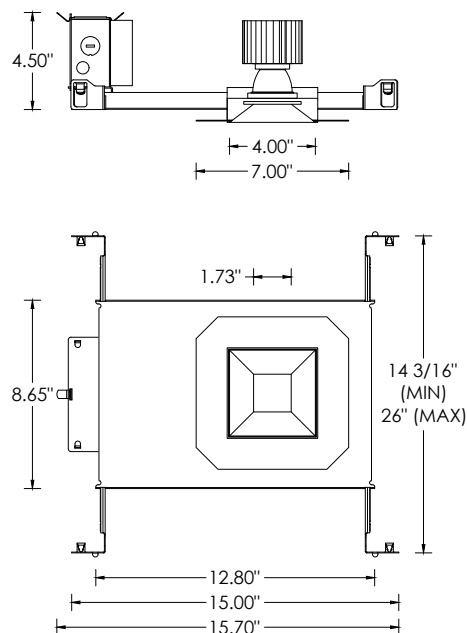
NC- NEW CONSTRUCTION HOUSING (NON-IC AND CP RATED)
IC - NEW CONSTRUCTION IC HOUSING (2000LM MAX)



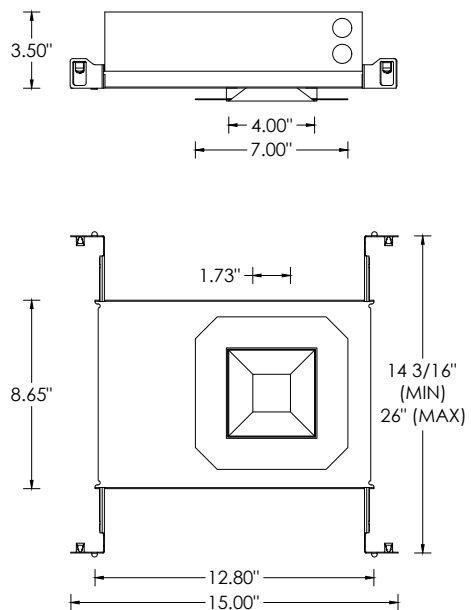
RMD - REMODEL (NON-IC)



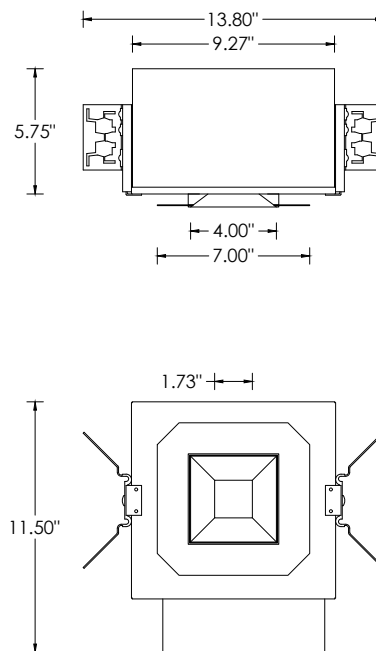
NCF - NEW CONSTRUCTION FRAME (NON-IC)



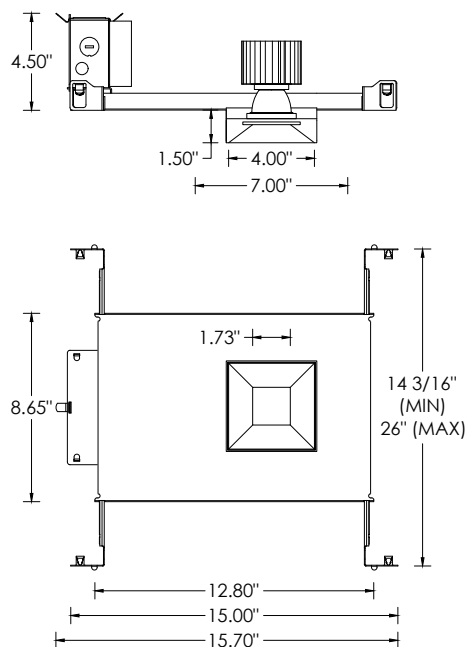
SH - SHALLOW HOUSING (2000LM MAX)
(IC RATED AND CP RATED)



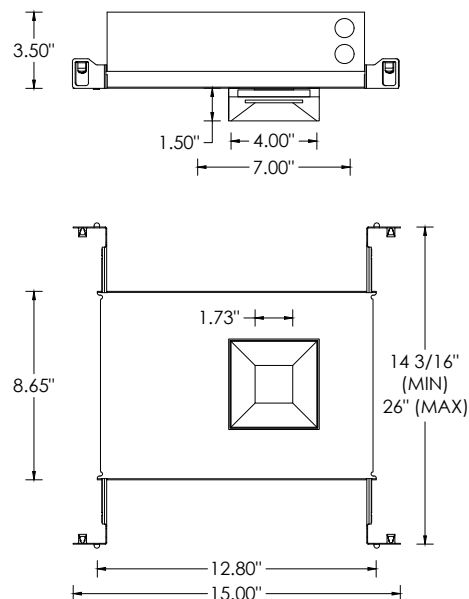
NC- NEW CONSTRUCTION HOUSING (NON-IC AND CP RATED)
IC - NEW CONSTRUCTION IC HOUSING (2000LM MAX)



NCF - NEW CONSTRUCTION FRAME (NON-IC)

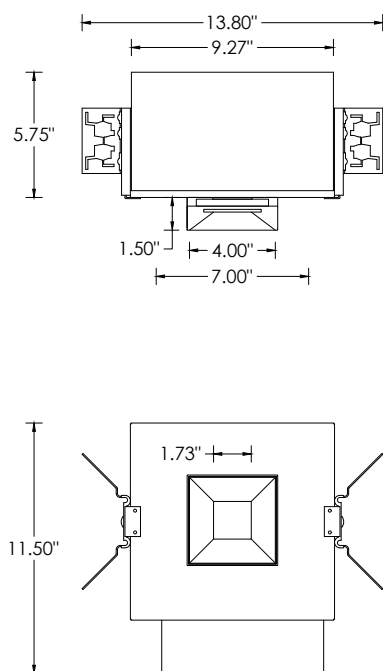


**SH - SHALLOW HOUSING (2000LM MAX)
(IC RATED AND CP RATED)**

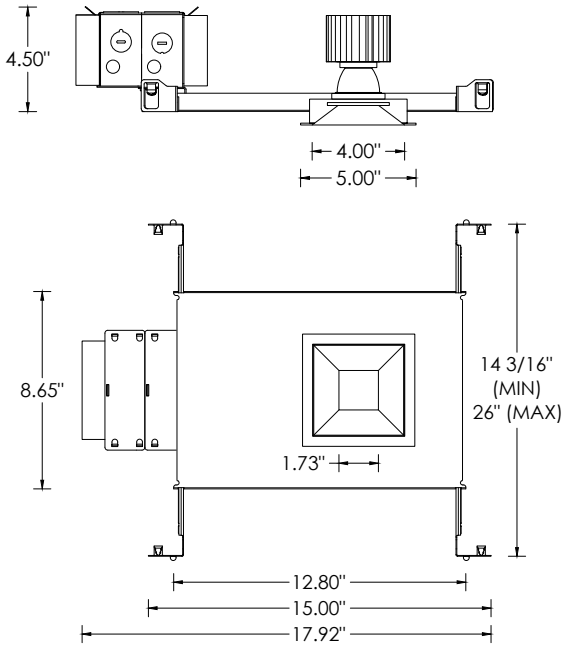


NC- NEW CONSTRUCTION HOUSING (NON-IC AND CP RATED)

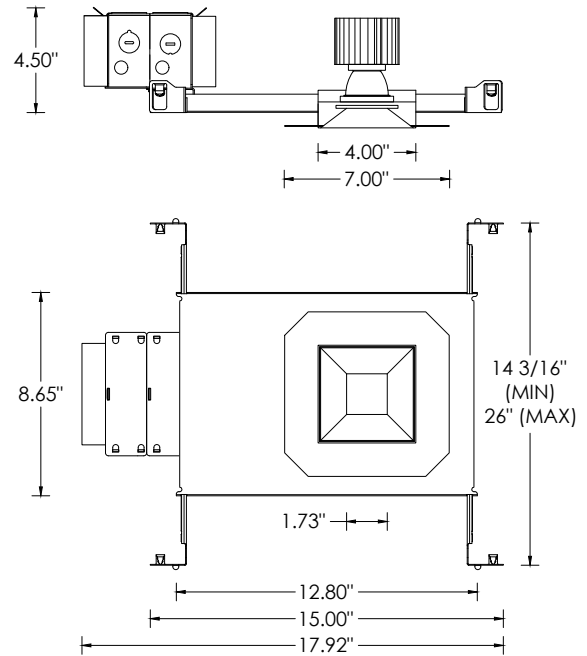
IC - NEW CONSTRUCTION IC HOUSING (2000LM MAX)



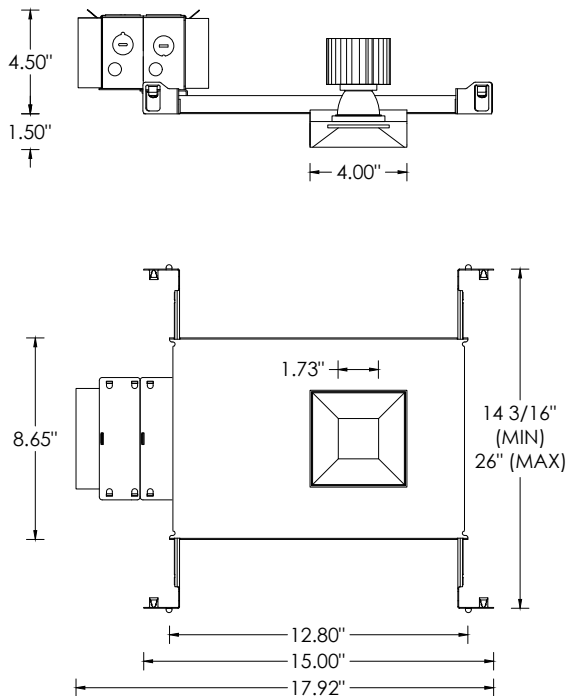
TRIM



XTR - TRIMLESS (MUD-IN DRYWALL)



MWF - FLANGELESS MILLWORK



The Athena wireless node (AWN) is a radio frequency (RF) device that enables simple, digital control of individual light fixtures in an Athena or myRoom XC control system. AWN is offered as a factory-installed RF control option across select 3G luminaires.

The Athena wireless processor or Clear Connect gateway – Type X is required to operate an Athena wireless node in an Athena or myRoom XC control system via a simple setup process using an iOS® or Android® compatible app. This enables these fixtures to be controllable by other Lutron wall controls, keypads, sensors, Pico remote controls, etc



AWN
RF NODE ONLY
FACTORY-INSTALLED
FOR INDIVIDUAL
FIXTURE CONTROL



HOUSING AND DRIVER COMPATIBILITY

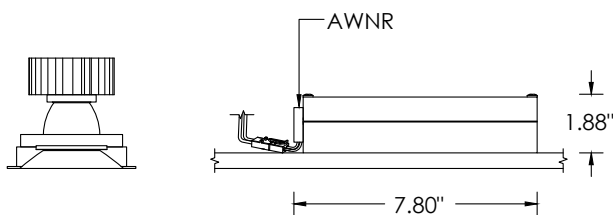
Housing types:

- NCF (New Construction, non-IC)
- RMD (Remodel, non-IC)

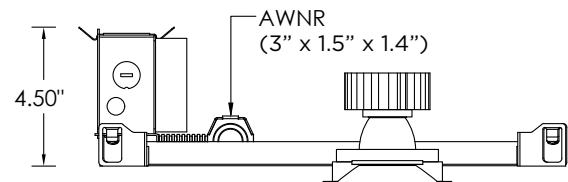
Driver / dimming types:

- DIM - 0-10V (100-1%)

RMD - REMODEL (NON-IC)



NCF - NEW CONSTRUCTION FRAME (NON-IC)



DEFAULT BEHAVIOR PRIOR TO PROGRAMMING

Light level defaults to 100%

Device runs an unprogrammed startup sequence until added to the Athena system

RF PLACEMENT (FIELD GUIDELINE)

Each node should be installed within 25 ft (7.6 m) of two or more Clear Connect – Type X devices (nodes / gateways / processors)
Follow Lutron Athena design guidelines for device density and coverage

SERVICING

Accessible through luminaire aperture

If the Awnr node is replaced, it must be re-added / re-commissioned within the Athena system by the controls contractor.