

## 3G-DL45RF

4" ROUND FIXED  
DOWNLIGHT

4" diameter, fixed downlight

Standard 95+ CRI LED system with performance up to 124 LPW

Delivered lumen range up to 2500lm at 95+ CRI

Regressed LED source for enhanced glare control

10° to 90° beam angle options suitable for various applications

Energy Star and Title 24 JA8 certified with maximum 1500lm output

Companion to 3G's Cylinder product family

**10 DAY QUICKSHIP**

MAX ORDER SIZE: 50 pcs



PROJECT:		TYPE:			
CATALOG#:		DATE:		QTY:	

CAT. NO	LUMEN OUTPUT	CRI	COLOR TEMP	BEAM ANGLE	VOLTAGE
3GQ-DL45RF	10 - 1000 LUMENS 15 - 1500 LUMENS 20 - 2000 LUMENS 25 - 2500 LUMENS  All lumen outputs are delivered lumens at 95+ CRI	H95 - 95+ CRI	30K - 3000K 35K - 3500K 40K - 4000K	10D - 10° <sup>1</sup> 20D - 20° 40D - 40° 60D - 60° 90D - 90° *	UNV - 120/277V

DRIVER	FLANGE TYPE	BEVELED INSERT	HOUSING TYPE
<b>DIM</b> - 0-10V (100-1%)	<b>WT</b> - WHITE TRIM <b>XTR</b> - TRIMLESS (MUD-IN DRYWALL)	<b>WI</b> - WHITE	<b>RMD</b> - REMODEL (NON-IC) <b>NCF</b> - NEW CONSTRUCTION FRAME (NON-IC) <b>SH</b> - SHALLOW HOUSING <sup>2</sup> (IC RATED & CP RATED) <b>NC</b> - NEW CONSTRUCTION HOUSING (CP RATED) <b>IC</b> - NEW CONSTRUCTION IC HOUSING <sup>2</sup>  NCF and SH housings ship nailer type bar hangers NC and IC housings ship with C-channel bar hangers

## OPTIONS

**SF** - SOFTENING LENS (SUPPLIED STANDARD) \*

**WL** - WET LOCATION RATED (SUPPLIED WITH SOFTENING LENS)

**CP** - CHICAGO PLENUM <sup>3</sup>

\*Softening lens not provided with 90D optic  
Maximum 1 optical accessory

**1** 10D reflector available up to 2000lm

2 Shallow Housing and New Construction IC housing available up to 2000lm

**3** Chicago Plenum option available with Shallow Housing (2000lm max) and New Construction Housing



Energy Star Listing available with 1500lm maximum  
Driver options include "DIM" (0-10V) and "LE" (Phase dimming)



JA8 (Title 24) Listing available with 1500lm maximum  
Driver options include "DIM" (0-10V) and "LE" (Phase dimming)



## PERFORMANCE

LUMEN OUTPUT	DELIVERED LUMENS	SYSTEM WATTS	EFFICACY (LPW)
1000	1000	8.2	122
1500	1500	12.4	121
2000	2000	16.9	119
2500	2500	21.5	116

BASED ON 95+ CRI, 3500K, 20D OPTIC WITH SOFTENING LENS  
Lumen output and actual wattage may vary +/- 5%

## MULTIPLIERS

BEAM ANGLE	
10D	0.97
20D	1.00
40D	0.94
60D	0.95
90D	0.90

COLOR TEMP	
2700K	0.98
3000K	1.00
3500K	1.00
4000K	1.02

## HOUSING

Remodel, new construction frame, shallow housing, new construction and IC housing options available  
Maximum ceiling thickness of 1.5". Consult factory for modifications  
All housing options designed to be easily converted in field to trim or trimless with minimal components  
Housing rated for #12 AWG (4 in, 4 out), 90°C conductors and through branch wiring

## BEVELED INSERT

Cast aluminum beveled insert with matte powder coated finish  
4" aperture with regressed LED source for enhanced glare control

## TRIM

Machined aluminum trim flange with matte powder coated finish and minimal 0.375" overlap

## TRIMLESS

Mudding flange features a perforated surface for easy mud-in application  
Integral blocking support provided to ensure fixture is properly secured within ceiling structure

## OPTICS

Proprietary anodized, aluminum reflectors  
Beam angle available in 10°, 20°, 40°, 60° and 90°  
Reflectors are field replaceable (10° reflector not interchangeable)  
Softening lens supplied standard

## LED SYSTEM

Standard 95+ CRI  
Color consistency <2 SDCM  
Available in 27K, 30K, 35K, and 40K  
L90 > 50,000 hours

## ELECTRICAL

Standard 120/277V, 0-10V constant current drivers  
100-1% dimming range and >0.9 power factor  
Integral drivers are easily accessible through luminaire aperture

## MOUNTING

Trim fixture designed for use in drywall, wood, acoustic, and other architectural ceilings  
Trimless fixture designed for use in drywall, mud-in ceiling applications  
New construction frame and IC rated shallow housing ship with nailer type bar hangers (14" to 26" extension)  
New construction and IC housing ship with C-Channel bar hangers

## LISTING

ETL listed and conforms to UL1598 standard  
Certified to CSA22.2 NO.250.0.  
JA8 (Title 24) Listed  
Rated for dry or damp locations

## WARRANTY

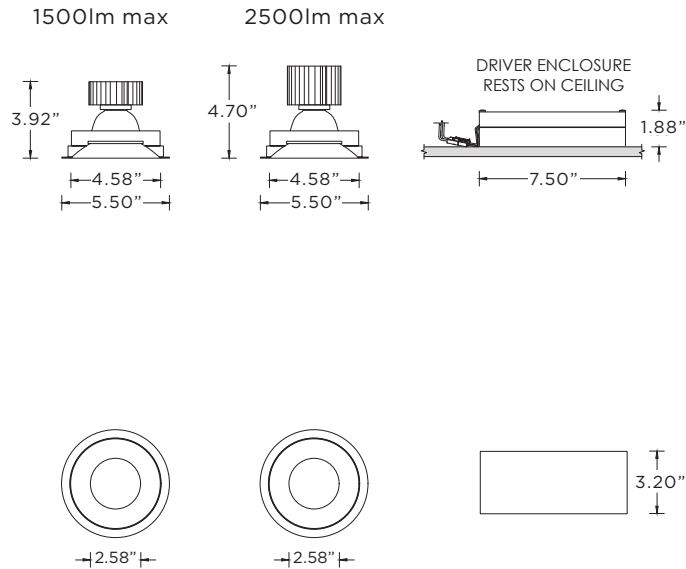
5 year limited warranty  
LED system rated for operation in ambient environments up to 25°C



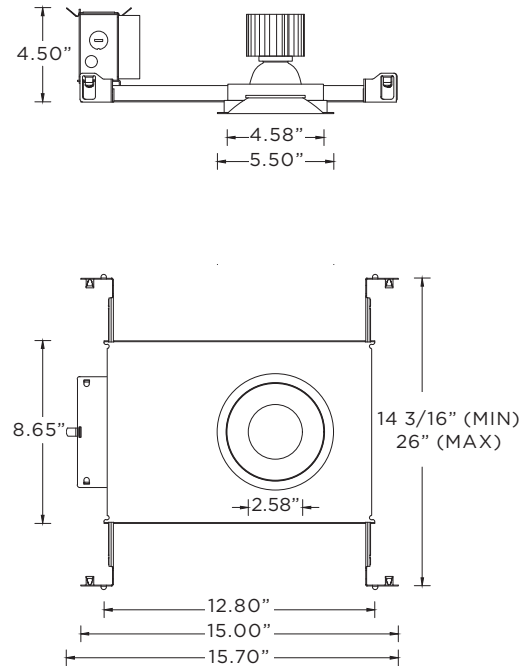
**3G-DL45RF**  
4" ROUND FIXED - DOWNLIGHT

## TRIM HOUSING OPTIONS

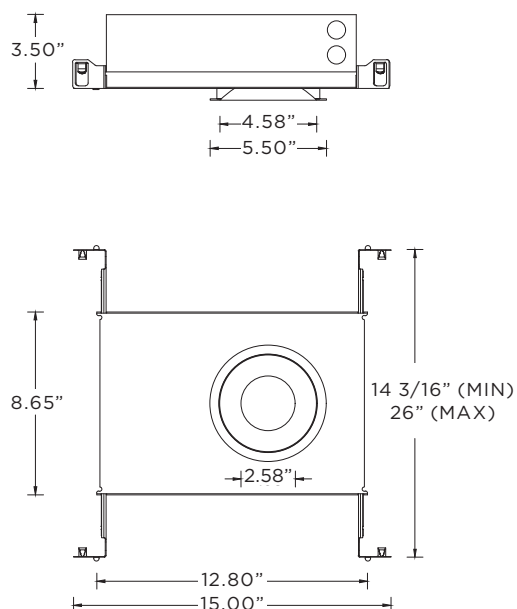
### RMD - REMODEL (NON-IC)



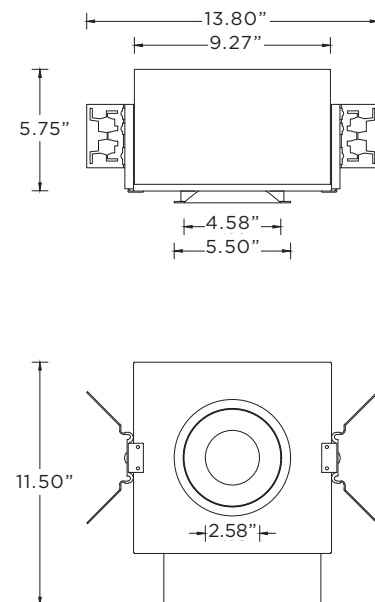
### NCF - NEW CONSTRUCTION FRAME (NON-IC)



### SH - SHALLOW HOUSING (2000LM MAX) (IC RATED AND CP RATED)



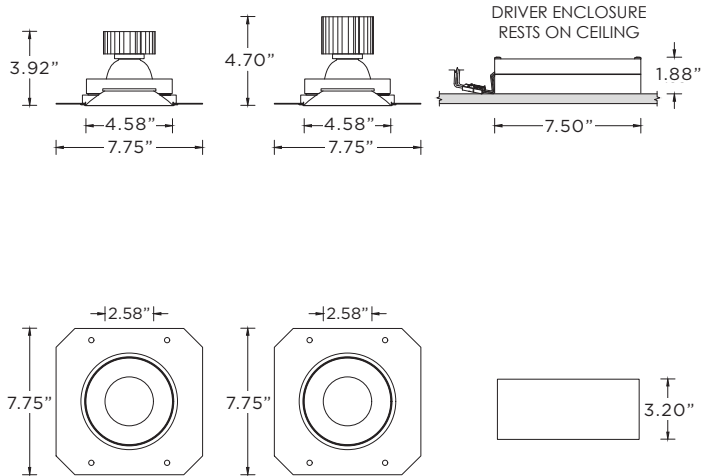
### NC- NEW CONSTRUCTION HOUSING (NON-IC AND CP RATED) IC - NEW CONSTRUCTION IC HOUSING (2000LM MAX)



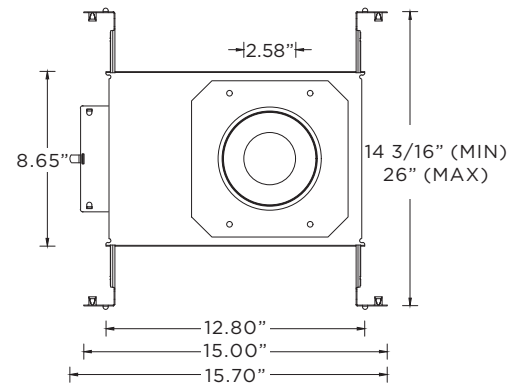
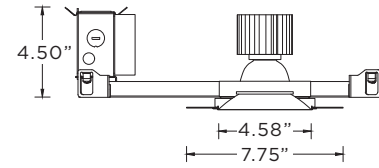
**RMD - REMODEL (NON-IC)**

1500lm max

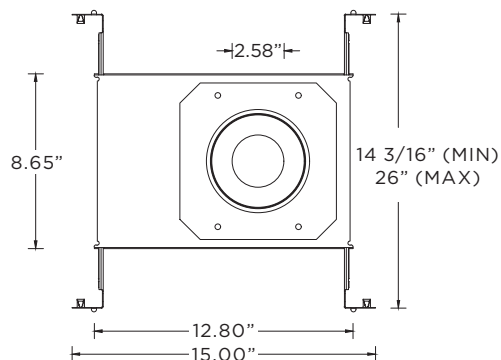
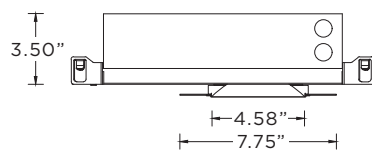
2500lm max



**NCF - NEW CONSTRUCTION FRAME (NON-IC)**



**SH - SHALLOW HOUSING (2000LM MAX)**  
(IC RATED AND CP RATED)



**NC- NEW CONSTRUCTION HOUSING (NON-IC AND CP RATED)**  
**IC - NEW CONSTRUCTION IC HOUSING (2000LM MAX)**

