



3G-RC1M3-3RD

3" ROUND MICRO MADISON

Small, 3" aperture, adjustable Madison downlight
Solid aluminum double gimbal with dual axis adjustability
Standard 95+ CRI LED system with performance up to 126 LPW
Delivered lumen range up to 1200lm at 95+ CRI
1.2" Regressed LED source for enhanced glare control
New construction, shallow housing with IC housing option
Companion to 3G's Madison product family



PROJECT:		TYPE:	
CATALOG#:		DATE:	QTY:

CAT. NO	LUMEN OUTPUT	CRI	COLOR TEMP	BEAM ANGLE	VOLTAGE
3G-RC1M3-3RD	07 - 700 LUMENS 10 - 1000 LUMENS 12 - 1200 LUMENS All lumen outputs are delivered lumens at 95+ CRI	H95 - 95+ CRI	27K - 2700K 30K - 3000K 35K - 3500K 40K - 4000K	30D - 30° 45D - 45° 65D - 65°	UNV - 120/277V 120 - 120V 347 - 347V ¹

DRIVER	FLANGE TYPE	GIMBAL FINISH	HOUSING INTERIOR
DIM - 0-10V (100-1%) LE - PHASE DIM ² (TRIAC/ELV, 100-1%) D01 - 0-10V (100-0.1%) DALI - DALI (100-1%) ³ DHL2 - LUTRON HI-LUME (1% ECOSYSTEM) DMX - DMX (100-0%)	WT - WHITE TRIM ST - SILVER TRIM BT - BLACK TRIM XTR - TRIMLESS (MUD-IN DRYWALL)	NG - NATURAL ALUMINUM BG - BLACK GIMBAL WG - WHITE GIMBAL	BK - BLACK

HOUSING TYPE	OPTIONS
SH - SHALLOW HOUSING	SF - SOFTENING LENS * HXB - BLACK HEXCELL LOUVER * IC - IC RATED ⁴ CP - CHICAGO PLENUM EMR - EMERGENCY BATTERY (REMOTE) ⁵ *Maximum 1 optical accessory

¹ 347 available in "DIM" 0-10V only (100-1%)

² Phase dimming options available in 120V only

³ DALI-2 (Type 6) provided as standard

⁴ IC rated not available with 1200lm option

⁵ Emergency battery installed remotely by others. Not accessible through the inside of the fixture

PERFORMANCE

LUMEN OUTPUT	DELIVERED LUMENS	SYSTEM WATTS	EFFICACY (LPW)
700	700	5.9	120
1000	1000	8.4	119
1200	1200	10.4	116

BASED ON 95+ CRI, 3500K, 45D OPTIC

Lumen output and actual wattage may vary +/- 5%

MULTIPLIERS

BEAM ANGLE	
30D	1.01
45D	1.00
65D	1.05

COLOR TEMP	
2700K	1.12
3000K	1.11
3500K	1.00
4000K	1.06

HOUSING

New construction shallow housing is IC rated

Housing fabricated in cold rolled steel. Standard black powder coated finish

Maximum ceiling thickness of 1". Consult factory for modifications

Housing rated for #12 AWG (4 in, 4 out), 90°C conductors and through branch wiring

TRIM FLANGE

Features a 3/4" removable trim assembly designed to conceal inner hardware

TRIMLESS

Aluminum mudding flange features a unique reveal that emulates drywall

Integral aluminum blocking support provided to ensure fixture is properly secured within ceiling structure

ADJUSTABILITY

Solid aluminum double gimbal with dual axis adjustability

OPTICS

Proprietary anodized, aluminum reflectors

Beam angle available in 30°, 45°, and 60°

Reflectors are field replaceable

LED SYSTEM

Standard 95+ CRI

Color consistency <2 SDCM

Available in 27K, 30K, 35K, and 40K

L90 > 50,000 hours

ELECTRICAL

Standard 0-10V, constant current drivers

100-1% dimming range and >0.9 power factor

Standard 120/277V universal voltage with several driver options

120V Forward Phase/Reverse Phase driver option (100-1%)

Integral drivers are easily accessible through luminaire aperture

EMERGENCY

7W output for 90 minutes (One fixture head +/- 850lm at 95+ CRI)

Title 24 Certified

Remote emergency battery not accessible through fixture aperture

Maximum remote mounting distance:

3000lm or below - 50ft (12AWG) or 25ft (14AWG)

Caution: Emergency Battery utilizes more than one power source and servicing should be performed by qualified personnel

MOUNTING

Trim fixture designed for use in drywall, wood, acoustic, and other architectural ceilings

Trimless fixture designed for use in drywall, mud-in ceiling applications

Optional C-Channel bar hangers available

Butterfly brackets compatible with 1/2" x 1/2" channel, 1/2", 5/8", 3/4" bar hanger, 1/2" EMT, and furring strips (supplied by others)

LISTING

ETL listed and conforms to UL1598 standard

Certified to CSA22.2 NO.250.0.

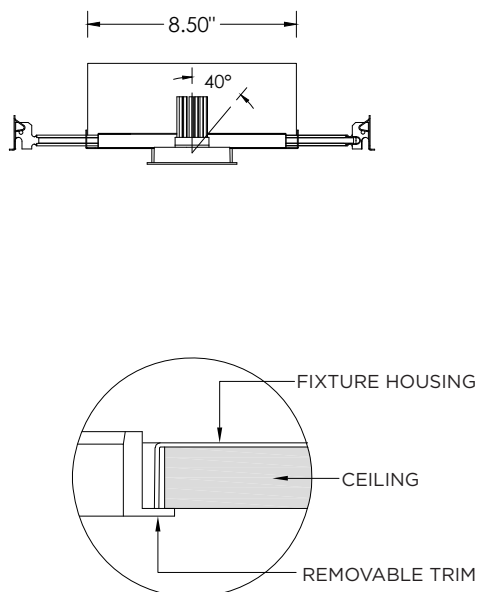
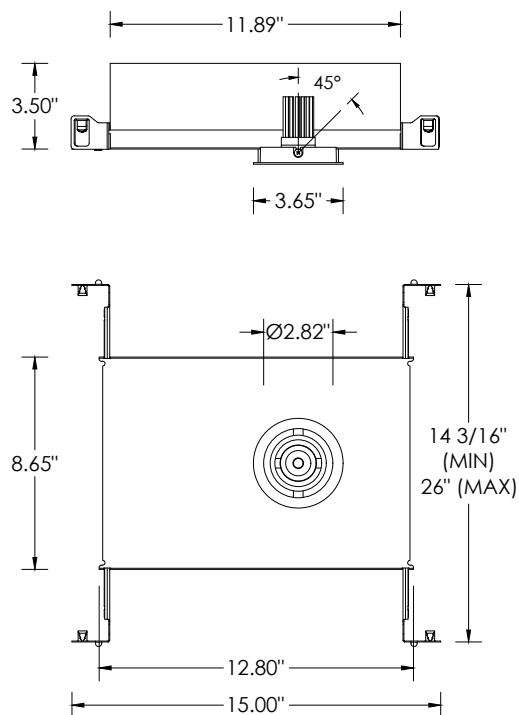
Rated for dry or damp locations

WARRANTY

5 year limited warranty

LED system rated for operation in ambient environments up to 25°C

TRIM HOUSING OPTIONS



TRIMLESS HOUSING OPTIONS

