

# 3G LIGHTING

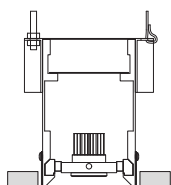
## 3G-38RMSL

3.8" RECESSED  
MICRO MADISON SLOT

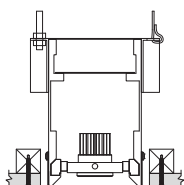
Solid aluminum double gimbal with dual axis adjustability  
Individual fixture heads can be repositioned in either direction (up to 18")  
Standard 95+ CRI LED system with performance up to 126 LPW  
Delivered lumen range up to 1200lm at 95+ CRI  
Regressed LED source for enhanced glare control  
Companion to 3G's Madison product family



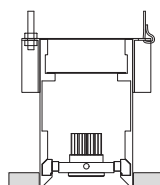
### WT - TRIM



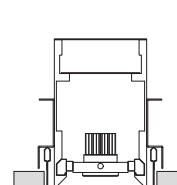
### XTR - TRIMLESS



### FX - FLANGELESS

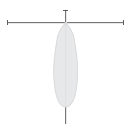


### GCX - GRID CEILING

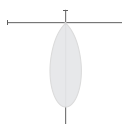


### OPTICS

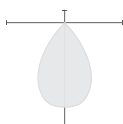
#### 30D



#### 45D



#### 65D



### PERFORMANCE

LUMEN OUTPUT	DELIVERED LUMENS	SYSTEM WATTS	EFFICACY (LPW)
700	700	5.9	120
1000	1000	8.4	119
1200	1200	10.4	116

BASED ON 95+ CRI, 3500K, 45D OPTIC  
Lumen output and actual wattage may vary +/- 5%

### PATTERNS

Specify pattern shape and overall dimensions as shown below. Patterns are connected with 12"x12" mitered corner sections (Fixture heads not available)  
Please consult factory for custom patterns and shapes not shown below.

L-SHAPE	U-SHAPE	RECTANGLE/SQUARE
<p>Provide dimensions of AxB Example: <b>L</b> - 6'x8'</p>	<p>Provide dimensions of AxBxC Example: <b>U</b> - 8'x10'x6"</p>	<p>Provide dimensions of AxB Example: <b>R</b> - 10'x8'</p>

<b>PROJECT:</b>				<b>TYPE:</b>			
<b>CATALOG#:</b>				<b>DATE:</b>		<b>QTY:</b>	

CAT. NO	LUMEN OUTPUT**	CRI	COLOR TEMP	BEAM ANGLE	VOLTAGE
<b>3G-38RMSL</b>	<b>07</b> - 700 LUMENS <b>10</b> - 1000 LUMENS <b>12</b> - 1200 LUMENS  <small>All lumen outputs are delivered lumens at 95+ CRI</small>	<b>H95</b> - 95+ CRI	<b>27K</b> - 2700K <b>30K</b> - 3000K <b>35K</b> - 3500K <b>40K</b> - 4000K	<b>30D</b> - 30° <b>45D</b> - 45° <b>65D</b> - 65°	<b>UNV</b> - 120/277V <b>120</b> - 120V

DRIVER	TRIM FLANGE	GIMBAL FINISH	HOUSING FINISH
<b>DIM</b> - 0-10V (100-1%) <b>LE</b> - PHASE DIM <sup>3</sup> <small>(TRIAC/ELV, 100-1%)</small> <b>D01</b> - 0-10V (100-0.1%) <b>DALI</b> - DALI (100-1%) <sup>4</sup>	<b>WT</b> - WHITE TRIM (STANDARD) <b>BT</b> - BLACK TRIM <b>XTR</b> - TRIMLESS (MUD-IN DRYWALL) <b>FX</b> - FLANGELESS <b>GCX</b> - GRID CEILING * <small>(UNIVERSAL MOUNT)</small>  <small>*Universal mounting brackets used for all grid ceiling types only. See mounting details</small>	<b>NG</b> - NATURAL ALUMINUM <b>BG</b> - BLACK GIMBAL <b>WG</b> - WHITE GIMBAL	<b>BK</b> - BLACK (STANDARD) <b>WH</b> - WHITE

OPTIONS	RUN TYPE	FIXTURE HEAD SPACING
<b>SF</b> - SOFTENING LENS * <b>HXB</b> - BLACK HEXCELL * LOUVER <b>2C</b> - 2 CIRCUIT OPERATION <b>3C</b> - 3 CIRCUIT OPERATION <b>CP</b> - CHICAGO PLENUM  <small>*Maximum 1 optical accessory</small>	<b>S</b> - ____' (STRAIGHT) <b>L</b> - ____'x ____' (L-SHAPE) <b>U</b> - ____'x ____'x ____' (U-SHAPE) <b>R</b> - ____'x ____' (RECTANGLE/SQUARE)  <small>Continuous runs available in 6" increments</small>	<b>12"</b> - 12" ON CENTER <b>18"</b> - 18" ON CENTER <b>24"</b> - 24" ON CENTER <b>36"</b> - 36" ON CENTER <b>48"</b> - 48" ON CENTER <b>CUS</b> - CUSTOM SPACING SPECIFY NUMBER OF DOWNLIGHTS " <b>CUS(XX)</b> "

<sup>1</sup> Forward Phase/Reverse Phase driver available in 120V only

<sup>2</sup> DALI-2 (Type 6) provided as standard

## PERFORMANCE

LUMEN OUTPUT	DELIVERED LUMENS	SYSTEM WATTS	EFFICACY (LPW)
700	700	5.9	120
1000	1000	8.4	119
1200	1200	10.4	116

BASED ON 95+ CRI, 3500K, 45D OPTIC  
Lumen output and actual wattage may vary +/- 5%

## MULTIPLIERS

BEAM ANGLE	
30D	1.01
45D	1.00
65D	1.05

COLOR TEMP	
2700K	1.12
3000K	1.11
3500K	1.00
4000K	1.06

## HOUSING

Housing constructed in extruded aluminum and cold rolled steel  
Designed for continuous runs in various configurations  
Maximum ceiling thickness of 1.75". Consult factory for modifications  
Standard matte black powder coated housing finish  
Trim flange with powder coated finish and 0.400" overlap  
Trimless model features a perforated galvanized mudding flange

## ADJUSTABILITY

Solid aluminum double gimbal with dual axis adjustability  
Individual fixture heads can be repositioned within channel  
Movement allowable up to 18" in either direction  
Each double gimbal can be locked in place

## OPTICS

Proprietary anodized, aluminum reflectors  
Beam angle available in 30°, 45°, and 65°  
Reflectors are field replaceable

## LED SYSTEM

Standard 95+ CRI  
Color consistency <2 SDCM  
Available in 27K, 30K, 35K, and 40K  
L90 > 50,000 hours

## ELECTRICAL

Standard 0-10V, constant current drivers  
100-1% dimming range and >0.9 power factor  
Standard 120/277V universal voltage with several driver options  
120V Forward Phase/Reverse Phase driver option (100-1%)  
Integral drivers are easily accessible through luminaire aperture

## MOUNTING

New construction housing suspended via 1/4" threaded rod or suspension cables (by others)  
Trim fixture designed for use in drywall, wood, and other architectural ceiling materials  
Trimless fixture designed for use in drywall, mud-in ceiling applications  
Flangeless fixture designed for use in wood ceilings  
Suitable for various grid ceiling applications (see mounting details)

## LISTING

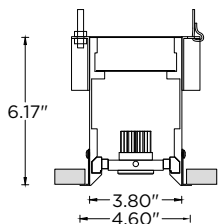
ETL listed and conforms to UL1598 standard  
Certified to CSA22.2 No.250.0.  
Rated for dry or damp locations

## WARRANTY

5 year limited warranty  
LED system rated for operation in ambient environments up to 25°C

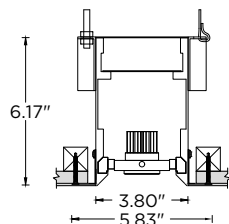
**HARD CEILING**

**WT - TRIM**



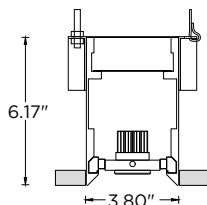
RECOMMENDED CEILING  
CUT-OUT 4.30"

**XTR - TRIMLESS**



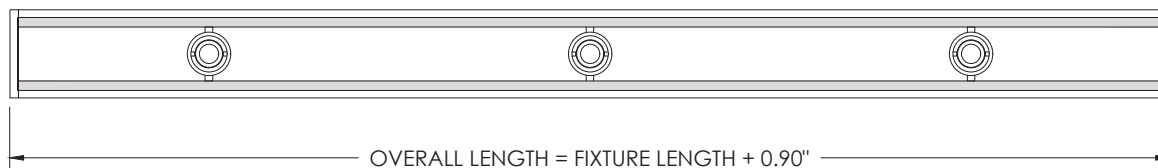
RECOMMENDED CEILING  
CUT-OUT 4.20"

**FX - FLANGELESS**

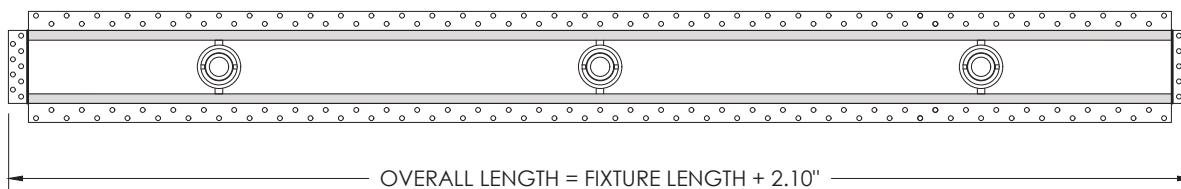


RECOMMENDED CEILING  
CUT-OUT 3.90"

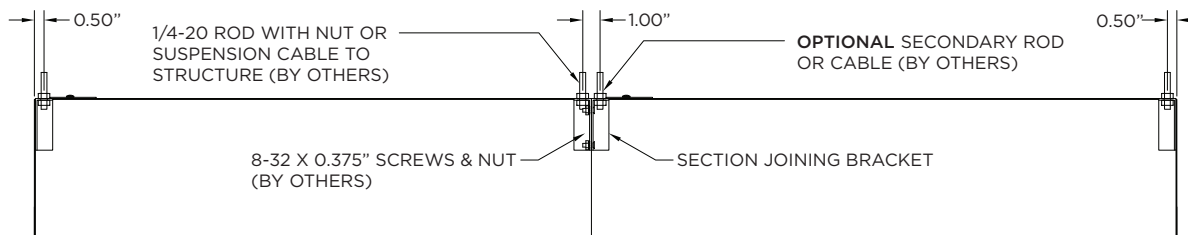
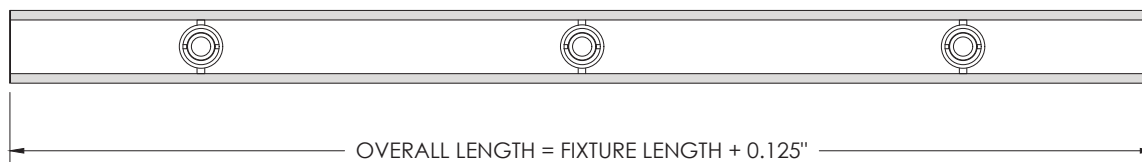
**TRIM**



**TRIMLESS (MUD-IN DRYWALL)**

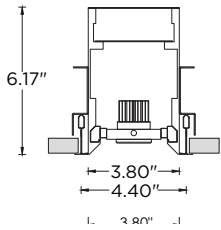


**FLANGELESS**

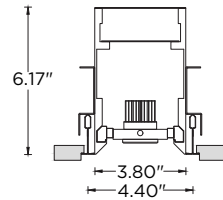


**GRID CEILING**

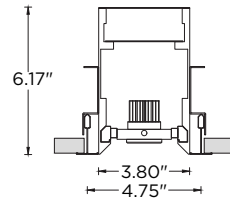
**9L - 9/16" LAYIN**



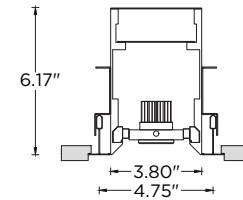
**9TG - 9/16" TEGULAR**



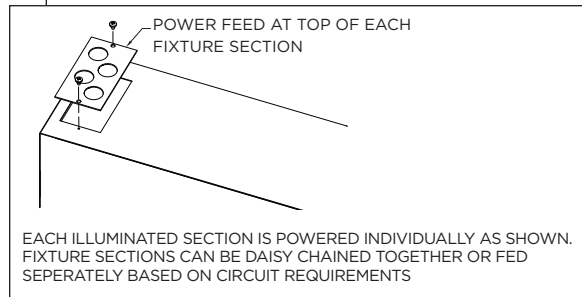
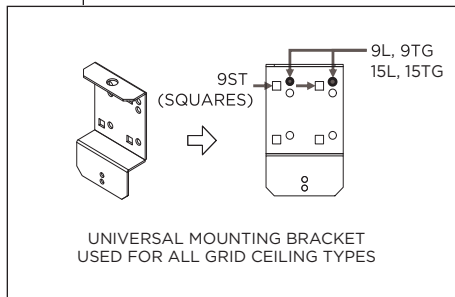
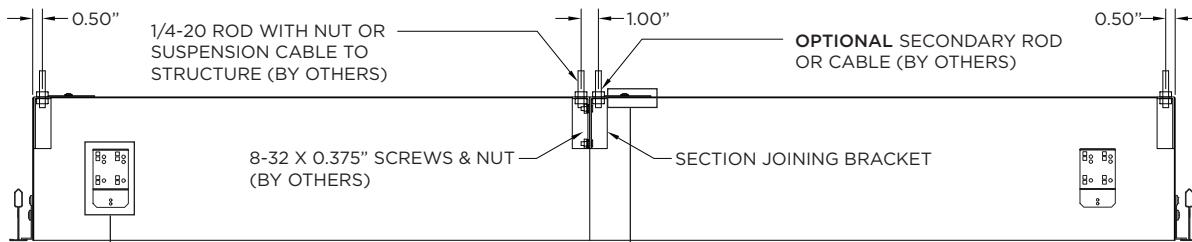
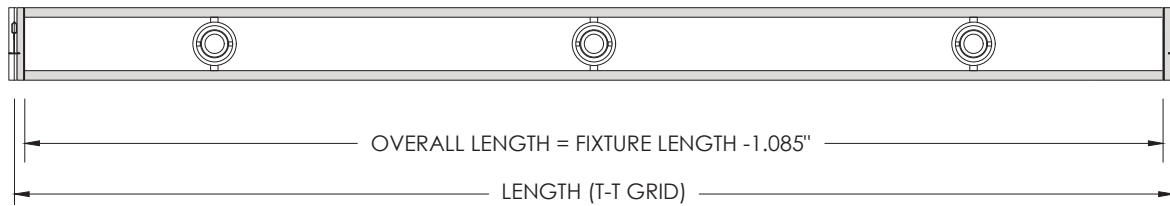
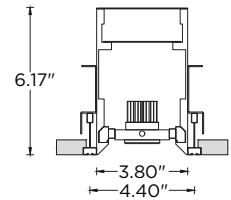
**15L - 15/16" LAYIN**



**15TG - 15/16" TEGULAR**



**9ST - 9/16" SLOT TEE TEGULAR**



**GIMBAL ADJUSTABILITY**

