

3G LIGHTING

3G-PDL33RM3

3" MICRO MADISON CYLINDER
7" AND 11" HEIGHT

3" high performance, Micro Madison adjustable cylinder
Solid aluminum double gimbal with dual axis adjustability
Standard 95+ CRI LED system with performance up to 126 LPW
Delivered lumen range up to 1200m at 95+ CRI
1.2" Regressed LED source for enhanced glare control
Extruded aluminum construction with no visible hardware
Companion to 3G's Madison product family



| | | | | | |
|-------------|--|--------------|-----|------------|------------|
| PROJECT: | | TYPE: | | | |
| CATALOG#: | | DATE: | | QTY: | |
| | | | | | |
| CAT. NO | FIXTURE HEIGHT | LUMEN OUTPUT | CRI | COLOR TEMP | BEAM ANGLE |
| 3G-PDL33RM3 | 7H - 7" HEIGHT * 11H - 11" HEIGHT | | | | |

PERFORMANCE

| LUMEN OUTPUT | DELIVERED LUMENS | SYSTEM WATTS | EFFICACY (LPW) |
|--------------|------------------|--------------|----------------|
| 700 | 700 | 5.9 | 120 |
| 1000 | 1000 | 8.4 | 119 |
| 1200 | 1200 | 10.4 | 116 |

BASED ON 95+ CRI, 3500K, 45D OPTIC
Lumen output and actual wattage may vary +/- 5%

MULTIPLIERS

| BEAM ANGLE | |
|------------|------|
| 30D | 1.01 |
| 45D | 1.00 |
| 65D | 1.05 |

| COLOR TEMP | |
|------------|------|
| 2700K | 0.98 |
| 3000K | 1.00 |
| 3500K | 1.00 |
| 4000K | 1.02 |

HOUSING

Extruded aluminum housing with powder coated finish

BEVELED INSERT

Machined aluminum beveled insert

Solid aluminum double gimbal with dual axis adjustability (45°x45°)

OPTICS

Proprietary anodized, aluminum reflectors

Beam angle available in 30°, 45° and 65°

Reflectors are field replaceable

LED SYSTEM

Standard 95+ CRI

Color consistency <2 SDCM

Available in 27K, 30K, 35K, and 40K

L90 > 50,000 hours

ELECTRICAL

Standard 0-10V, constant current drivers

100-1% dimming range and >0.9 power factor

120V Forward Phase/Reverse Phase driver option (100-1%)

Integral drivers are easily accessible through luminaire aperture

MOUNTING

Standard, 18-gauge, 5 conductor single circuit braided power feed cable (black and white finish)

1/2" diameter rigid stem option with sloped ceiling adapter (field cuttable)

All hardware included for mounting to 4" octagonal junction box

Canopy provided in white finish as standard

Conduit feed cut-out canopy option designed to mount to 4" octagonal junction box

LISTING

ETL listed and conforms to UL1598 standard

Certified to CSA22.2 NO.250.0.

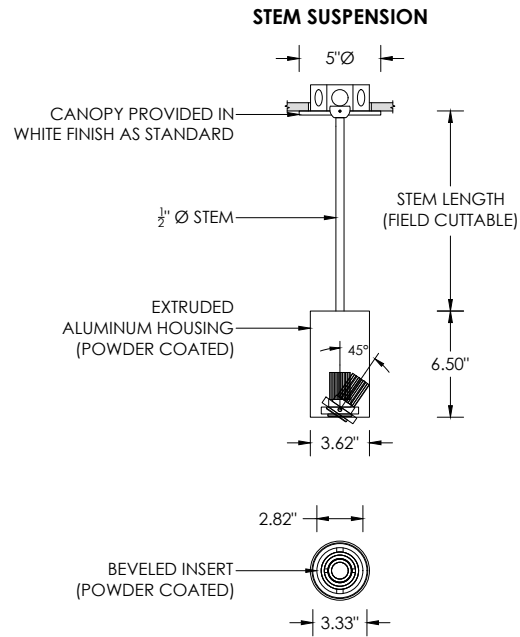
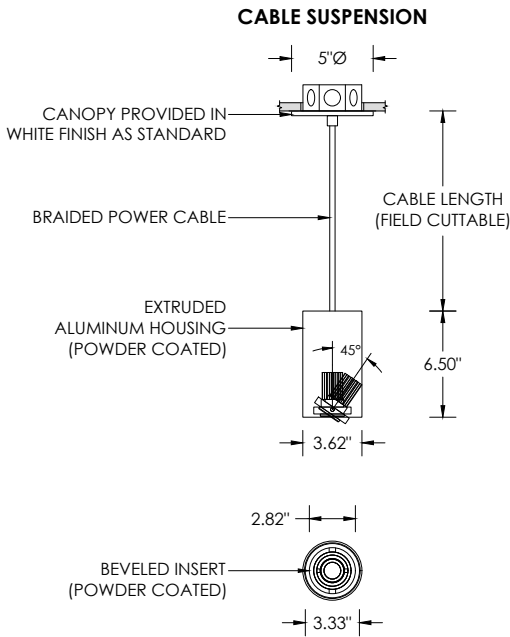
Rated for dry or damp locations

WARRANTY

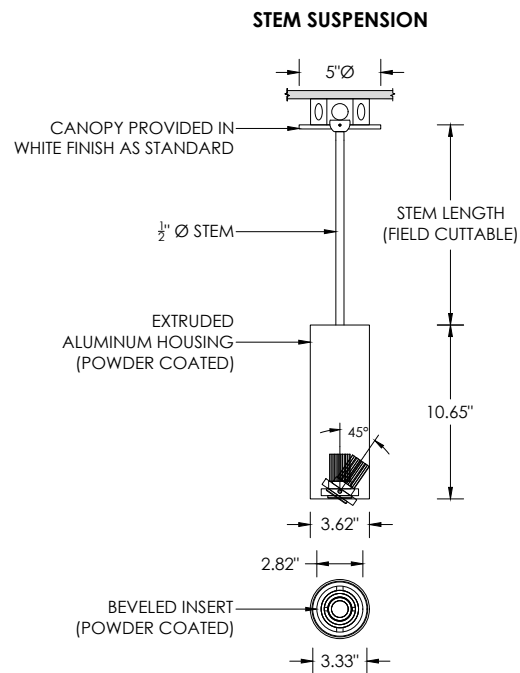
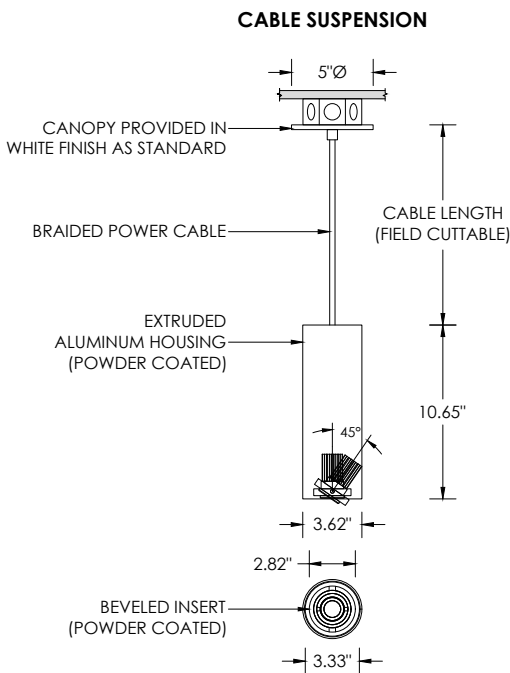
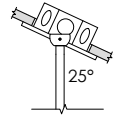
5 year limited warranty

LED system rated for operation in ambient environments up to 25°C

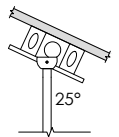
RECESSED 4" OCTAGONAL JUNCTION BOX BY OTHERS
STANDARD CANOPY MOUNT



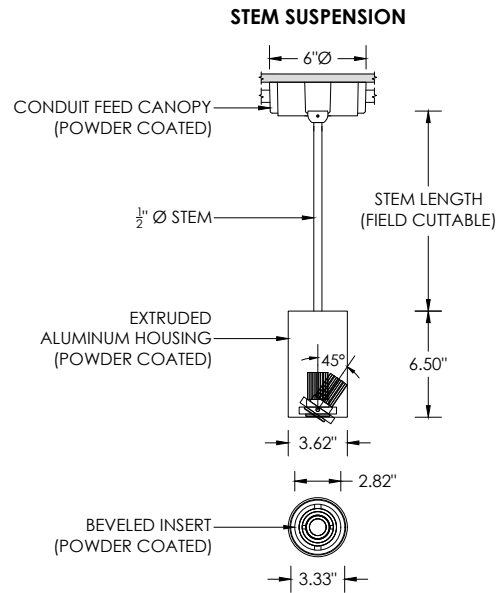
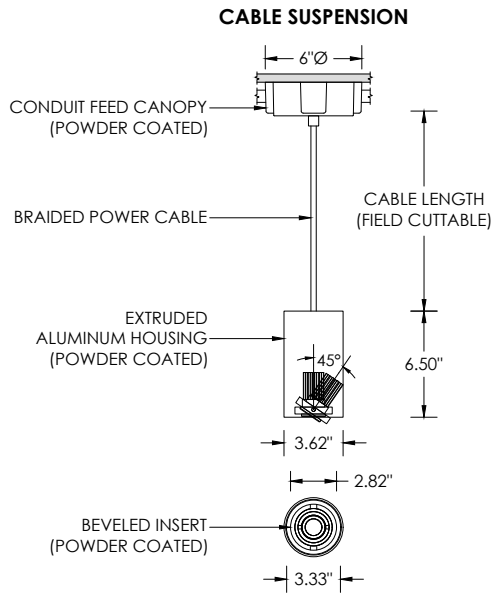
SUITABLE FOR SLOPED CEILING



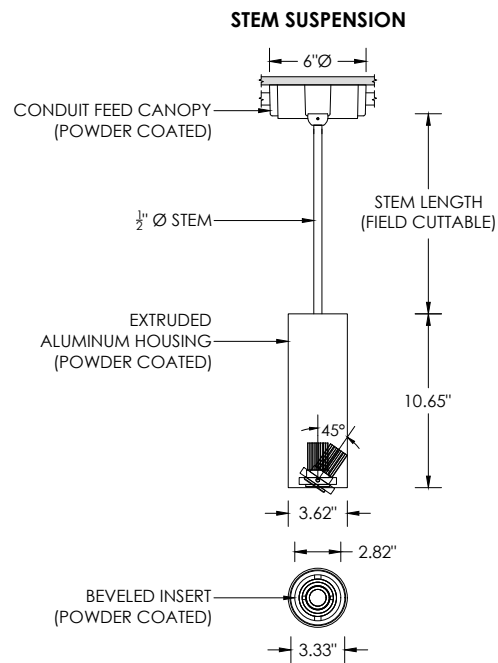
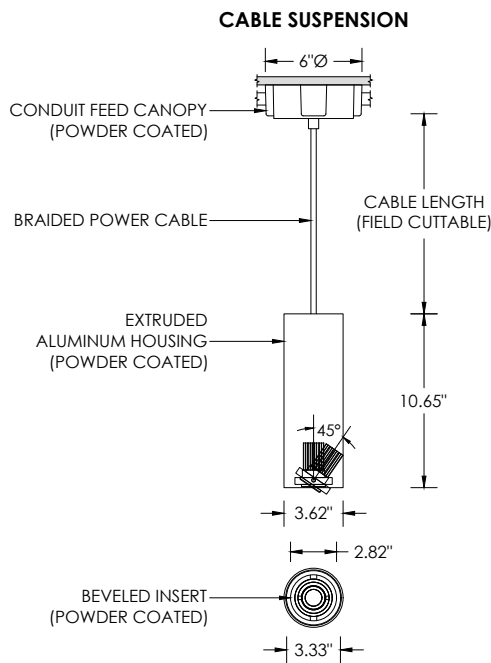
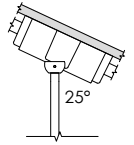
SUITABLE FOR SLOPED CEILING



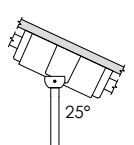
SURFACE 4" OCTAGONAL X 1.5" DEEP JUNCTION BOX BY OTHERS
CONDUIT FEED CANOPY MOUNT (CFX OPTION)



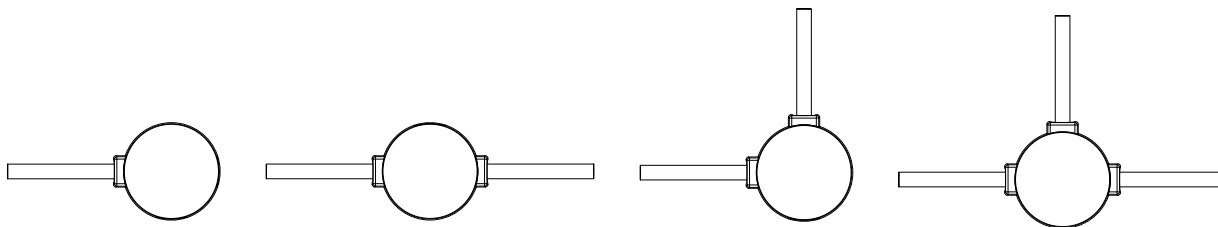
SUITABLE FOR SLOPED CEILING



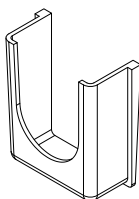
SUITABLE FOR SLOPED CEILING



CONDUIT FEED CANOPY MOUNTING OPTIONS



CONDUIT COVER
3 PROVIDED WITH EACH
CONDUIT FEED CANOPY



BLANK
2 PROVIDED WITH EACH
CONDUIT FEED CANOPY

