



3G-PDL33SM3

3" MICRO MADISON PENDANT
7" AND 11" HEIGHT

3" high performance, Micro Madison adjustable cylinder
Solid aluminum double gimbal with dual axis adjustability
Standard 95+ CRI LED system with performance up to 126 LPW
Delivered lumen range up to 1200lm at 95+ CRI
1.2" Regressed LED source for enhanced glare control
Extruded aluminum construction with no visible hardware
Companion to 3G's Madison product family



PROJECT:		TYPE:	
CATALOG#:		DATE:	QTY:

CAT. NO	FIXTURE HEIGHT	LUMEN OUTPUT	CRI	COLOR TEMP	BEAM ANGLE
3G-PDL33SM3	7H - 7" HEIGHT * 11H - 11" HEIGHT	07 - 700 LUMENS 10 - 1000 LUMENS 12 - 1200 LUMENS All lumen outputs are delivered lumens at 95+ CRI	H95 - 95+ CRI	27K - 2700K 30K - 3000K 35K - 3500K 40K - 4000K	30D - 30° 45D - 45° 65D - 65°
*7H not available with 700lm					

VOLTAGE	DRIVER	HOUSING FINISH	GIMBAL FINISH	CANOPY	CANOPY FINISH
UNV - 120/277V 120 - 120V	DIM - 0-10V (100-1%) LE - PHASE DIM * (TRIAC/ELV, 100-1%) *Phase dimming available in 120V only	WH - WHITE BK - BLACK SV - SILVER CF - CUSTOM RAL COLOR	NG - NATURAL ALUMINUM BG - BLACK WG - WHITE	CN - CANOPY (STANDARD) CF - CONDUIT FEED CANOPY	WCF - WHITE (STANDARD) BCF - BLACK SCF - SILVER

SUSPENSION TYPE	SUSPENSION LENGTH	OPTIONS
WC - WHITE CABLE BC - BLACK CABLE RSW - WHITE RIGID STEM RSB - BLACK RIGID STEM RSS - SILVER RIGID STEM RSC - CUSTOM RAL STEM	C60 - 60" CABLE C120 - 120" CABLE S48 - 48" STEM S96 - 96" STEM All suspension options are field cuttable	SF - SOFTENING LENS * HXB - BLACK HEXCELL LOUVER * *Maximum 1 optical accessory

PERFORMANCE

LUMEN OUTPUT	DELIVERED LUMENS	SYSTEM WATTS	EFFICACY (LPW)
700	700	5.9	120
1000	1000	8.4	119
1200	1200	10.4	116

BASED ON 95+ CRI, 3500K, 45D OPTIC
Lumen output and actual wattage may vary +/- 5%

MULTIPLIERS

BEAM ANGLE	
30D	1.01
45D	1.00
65D	1.05

COLOR TEMP	
2700K	0.98
3000K	1.00
3500K	1.00
4000K	1.02

HOUSING

Extruded aluminum housing with powder coated finish

BEVELED INSERT

Machined aluminum beveled insert

Solid aluminum double gimbal with dual axis adjustability (45°x45°)

OPTICS

Proprietary anodized, aluminum reflectors

Beam angle available in 30°, 45° and 65°

Reflectors are field replaceable

LED SYSTEM

Standard 95+ CRI

Color consistency <2 SDCM

Available in 27K, 30K, 35K, and 40K

L90 > 50,000 hours

ELECTRICAL

Standard 0-10V, constant current drivers

100-1% dimming range and >0.9 power factor

120V Forward Phase/Reverse Phase driver option (100-1%)

Integral drivers are easily accessible through luminaire aperture

MOUNTING

Standard, 18-gauge, 5 conductor single circuit braided power feed cable (black and white finish)

1/2" diameter rigid stem option with sloped ceiling adapter (field cuttable)

All hardware included for mounting to 4" octagonal junction box

Canopy provided in white finish as standard

Conduit feed cut-out canopy option designed to mount to 4" octagonal junction box

LISTING

ETL listed and conforms to UL1598 standard

Certified to CSA22.2 NO.250.0.

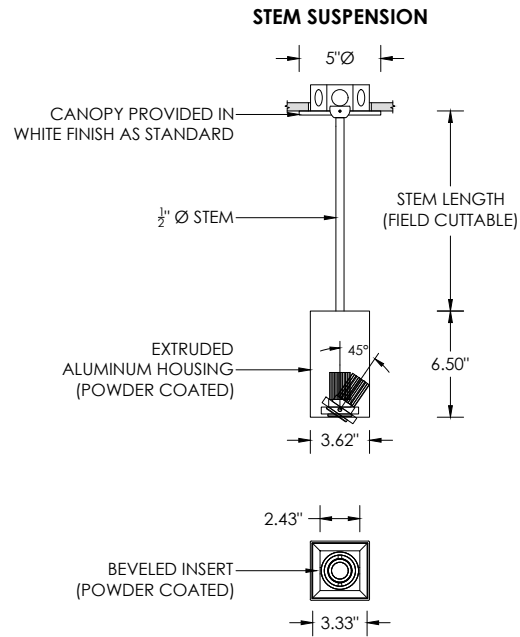
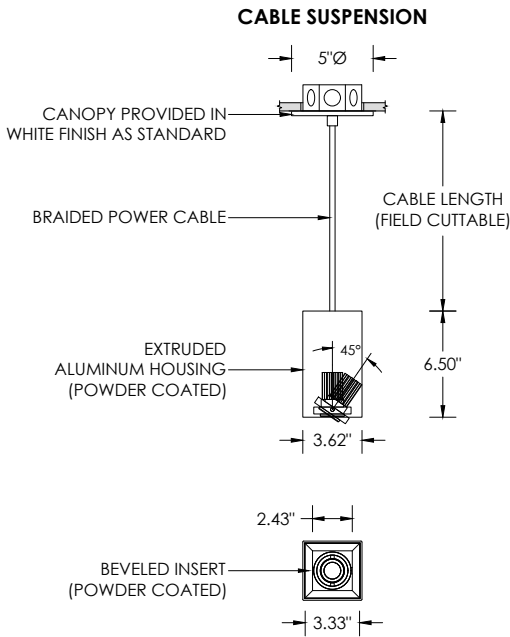
Rated for dry or damp locations

WARRANTY

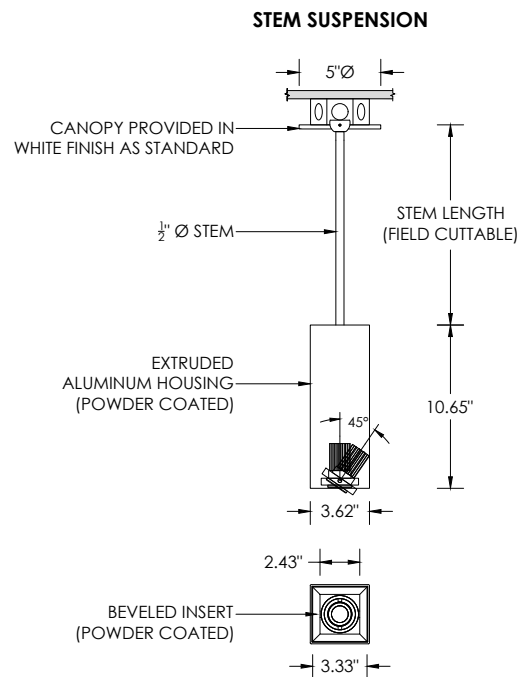
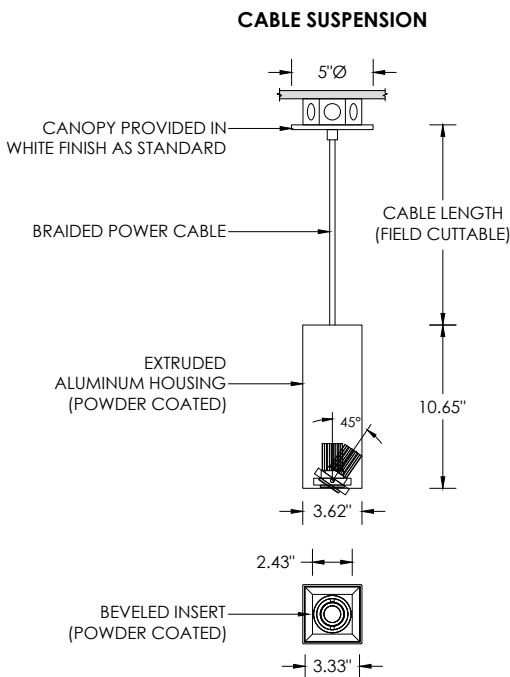
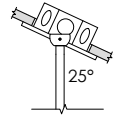
5 year limited warranty

LED system rated for operation in ambient environments up to 25°C

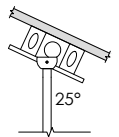
RECESSED 4" OCTAGONAL JUNCTION BOX BY OTHERS
STANDARD CANOPY MOUNT



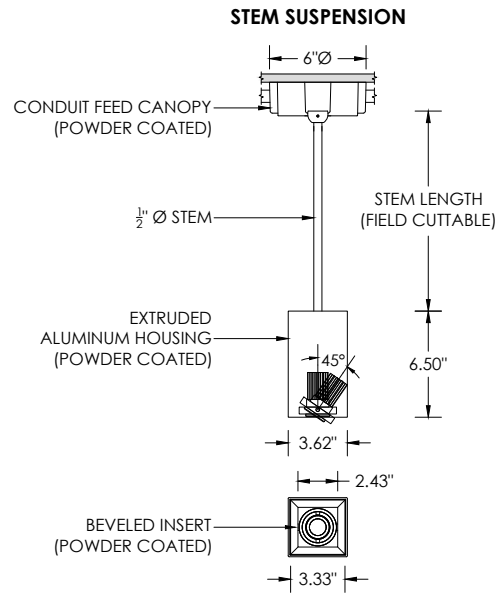
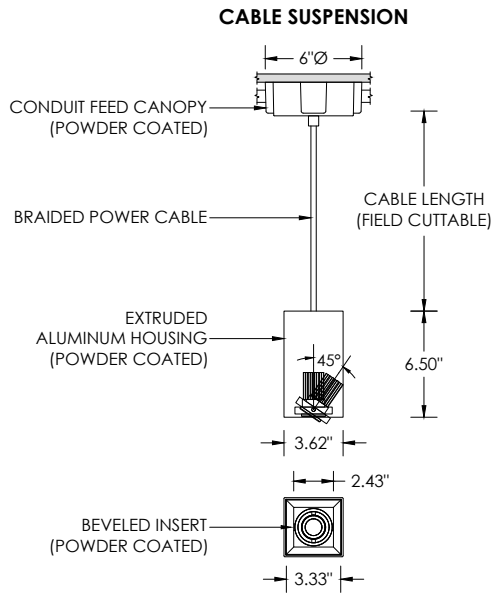
SUITABLE FOR SLOPED CEILING



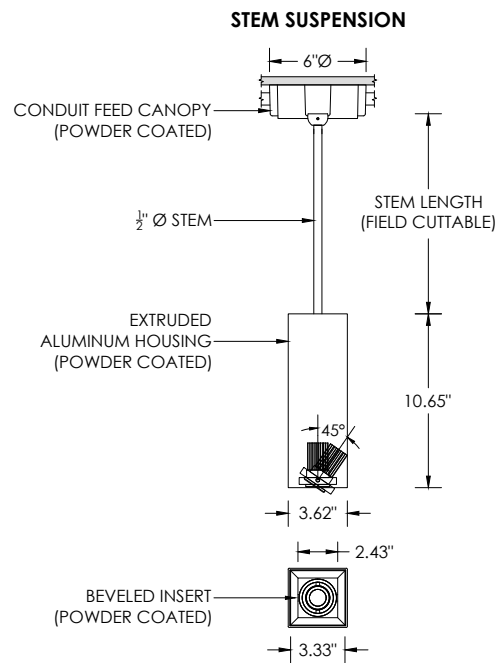
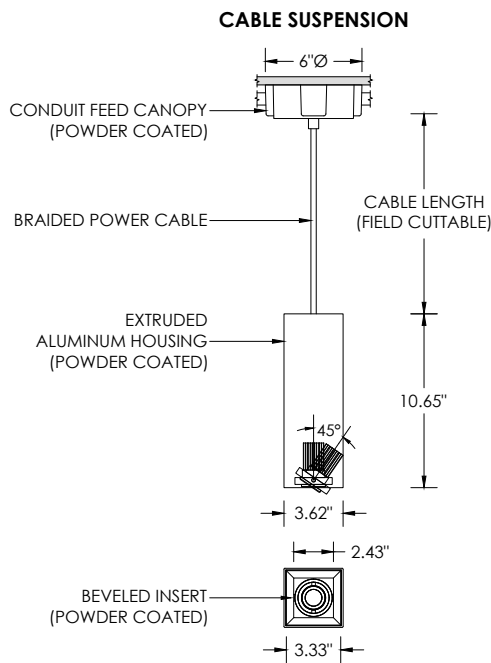
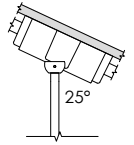
SUITABLE FOR SLOPED CEILING



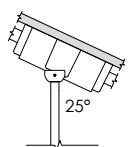
SURFACE 4" OCTAGONAL X 1.5" DEEP JUNCTION BOX BY OTHERS
CONDUIT FEED CANOPY MOUNT (CFX OPTION)



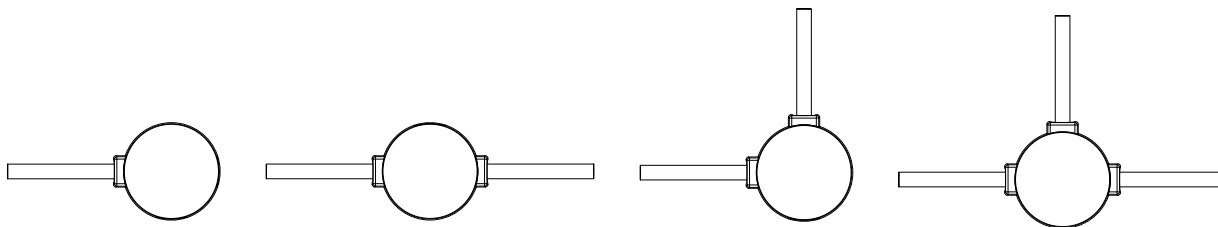
SUITABLE FOR SLOPED CEILING



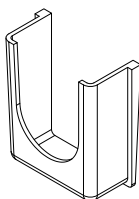
SUITABLE FOR SLOPED CEILING



CONDUIT FEED CANOPY MOUNTING OPTIONS



CONDUIT COVER
3 PROVIDED WITH EACH
CONDUIT FEED CANOPY



BLANK
2 PROVIDED WITH EACH
CONDUIT FEED CANOPY

