

3G LIGHTING

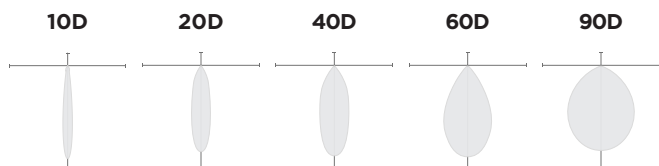
3G-SDL33RF

3" DOWNLIGHT CYLINDER
7" AND 11" HEIGHT

3" diameter, high performance cylinder with upgraded performance
Standard 95+ CRI LED system with performance up to 139 LPW
Delivered lumen range up to 2530lm at 95+ CRI
Regressed LED source with enhanced glare control
10° to 90° beam angle options suitable for various applications
Twist and lock extruded aluminum construction with no visible hardware
Companion to 3G's DL33R series downlight family



OPTICS

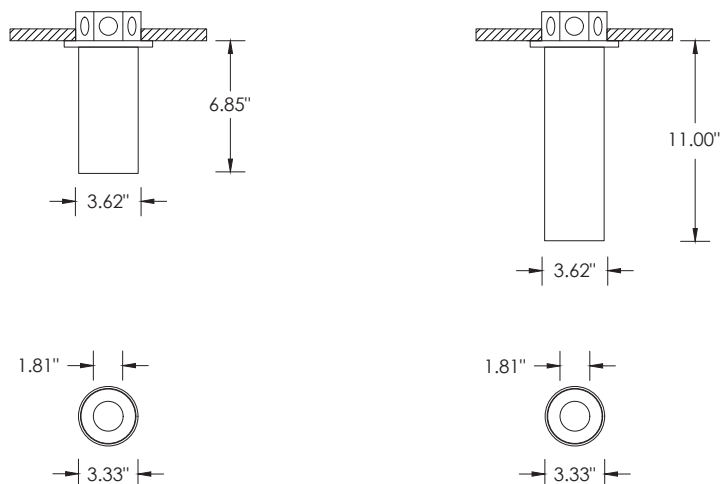


PERFORMANCE

LUMEN OUTPUT	DELIVERED LUMENS	SYSTEM WATTS	EFFICACY (LPW)
1000	1000	9.1	110
1350	1350	12.8	105
1750	1750	16.7	105
2000	2000	18.9	106

BASED ON 95+ CRI, 3500K, 40D OPTIC WITH SOFTENING LENS
Lumen output and actual wattage may vary +/- 5%

DIMENSIONS



PROJECT:				TYPE:			
CATALOG#:				DATE:		QTY:	

CAT. NO	FIXTURE HEIGHT	LUMEN OUTPUT	CRI	COLOR TEMP	BEAM ANGLE
3G-SDL33RF	7H - 7" HEIGHT * 11H - 11" HEIGHT	10 - 1000 LUMENS 13 - 1350 LUMENS 17 - 1750 LUMENS 20 - 2000 LUMENS	H95 - 95+ CRI	27K - 2700K 30K - 3000K 35K - 3500K 40K - 4000K	10D - 10° ¹ 20D - 20° ¹ 40D - 40° 60D - 60° 90D - 90° *
	*7H available up to 1350lm with integral driver (DIM & LE options)	All lumen outputs are delivered lumens at 95+ CRI			*90D optic supplied with lens Not available with other lens options

VOLTAGE	DRIVER	HOUSING FINISH	INSERT FINISH
UNV - 120/277V 120 - 120V 347 - 347V ²	DIM - 0-10V (100-1%) LE - PHASE DIM ³ (TRIAC/ELV, 100-1%) D01 - 0-10V (100-0.1%) DALI - DALI (100-1%) ⁴ DHL2 - LUTRON HI-LUME LDE ⁵ (100-1%) DMX - DMX (100-0%) ⁵ RDIM - REMOTE 0-10V (100-1%) RLE - REMOTE PHASE (TRIAC/ELV, 100-1%) Remote drivers supplied with enclosure	WH - WHITE BK - BLACK SV - SILVER CSF - CUSTOM-3G	WI - WHITE BI - BLACK SI - SILVER CI - CUSTOM-3G

OPTIONS
SF - SOFTENING LENS (SUPPLIED STANDARD) SB - SANDBLASTED LENS LS - LINEAR SPREAD LENS CF - CONDUIT FEED CANOPY FXC - SEAMLESS CANOPY EMR - EMERGENCY BATTERY (REMOTE) ⁶
*Softening lens not provided with 90D optic Maximum 1 optical accessory

- ¹ 10D and 20D reflector available up to 1750lm
² 347 available in "DIM" 0-10V only (100-1%). Not available with 7H model
³ Phase dimming options available in 120V only
⁴ DALI-2 (Type 6) provided as standard
⁵ DMX and DHL2 (Lutron) not available with 7H model
⁶ Supplied with enclosure with Emergency Battery and driver. Installed remotely by others. Not accessible through fixture aperture

PERFORMANCE

LUMEN OUTPUT	DELIVERED LUMENS	SYSTEM WATTS	EFFICACY (LPW)
1000	1000	9.1	110
1350	1350	12.8	105
1750	1750	16.7	105
2000	2000	18.9	106

BASED ON 95+ CRI, 3500K, 40D OPTIC WITH SOFTENING LENS
Lumen output and actual wattage may vary +/- 5%

MULTIPLIERS

BEAM ANGLE	
10D	0.92
20D	1.24
40D	1.00
60D	0.97
90D	0.91

COLOR TEMP	
2700K	0.98
3000K	1.00
3500K	1.00
4000K	1.02

HOUSING

Extruded aluminum housing with powder coated finish
Twist and lock construction with no visible hardware

BEVELED INSERT

Cast aluminum beveled insert with matte powder coated finish
3" aperture with regressed LED source for enhanced glare control

OPTICS

Proprietary anodized, aluminum reflectors
Beam angle available in 10°, 20°, 40°, 60° and 90°
Reflectors are field replaceable (10° reflector not interchangeable)
Softening lens supplied standard

ELECTRICAL

Standard 0-10V, constant current drivers
100-1% dimming range and >0.9 power factor
Standard 120/277V universal voltage with several driver options
120V Forward Phase/Reverse Phase driver option (100-1%)
Integral drivers are easily accessible through luminaire aperture
Remote drivers supplied with enclosure

LED SYSTEM

Standard 95+ CRI
Color consistency <2 SDCM
Available in 27K, 30K, 35K, and 40K
L90 > 50,000 hours

MOUNTING

All hardware included for mounting to 4" octagonal junction box
Conduit feed cut-out canopy option designed to mount to 4" octagonal junction box
Seamless canopy option mounts to 4" octagonal junction box (new construction only)

EMERGENCY

7W output for 90 minutes (+/- 750lm at 95+ CRI). Title 24 Certified
Remote emergency battery (not accessible through fixture aperture)
Maximum remote mounting distance: 50ft (12AWG) or 25ft (14AWG)
Caution: Emergency Battery utilizes more than one power source and servicing should be performed by qualified personnel

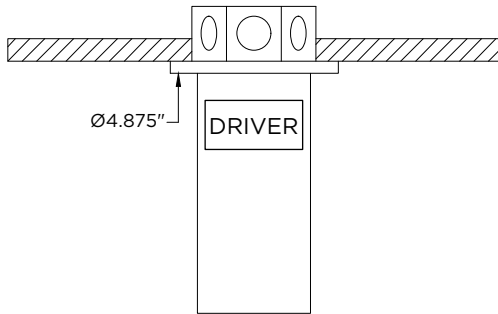
LISTING

ETL listed and conforms to UL1598 standard
Certified to CSA22.2 NO.250.0.
Rated for dry or damp locations

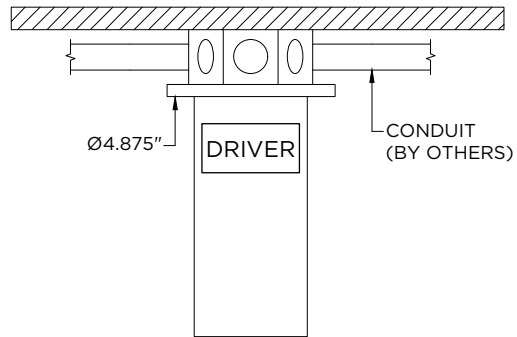
WARRANTY

5 year limited warranty
LED system rated for operation in ambient environments up to 25°C

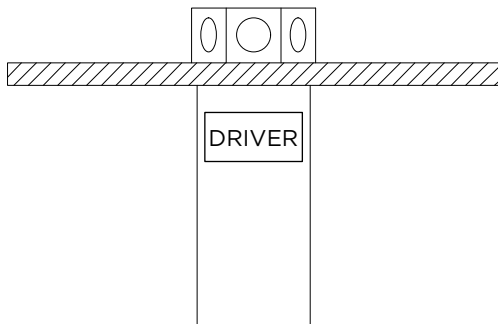
STANDARD CANOPY
RECESSED J-BOX (BY OTHERS)



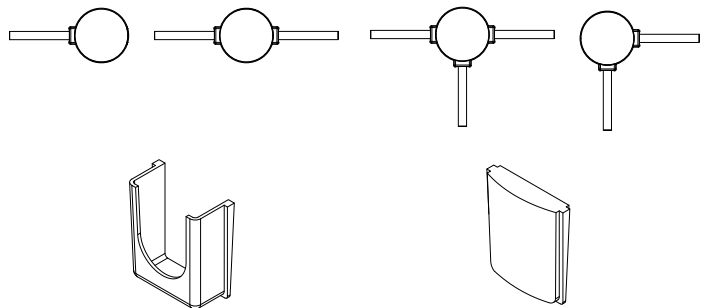
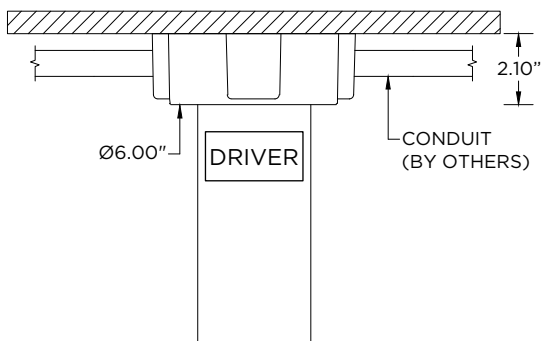
STANDARD CANOPY
SURFACE J-BOX (BY OTHERS)



FXC - SEAMLESS CANOPY
RECESSED J-BOX (BY OTHERS)



CF - CONDUIT FEED CANOPY
SURFACE MOUNT J-BOX (BY OTHERS)



CONDUIT COVER
3 PROVIDED WITH EACH
CONDUIT FEED CANOPY

BLANK
2 PROVIDED WITH EACH
CONDUIT FEED CANOPY