

# 3G LIGHTING

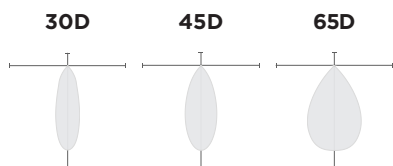
## 3G-SDL33RM3

3" MICRO MADISON CYLINDER  
7" AND 11" HEIGHT

3" high performance, Micro Madison adjustable cylinder  
Solid aluminum double gimbal with dual axis adjustability  
Standard 95+ CRI LED system with performance up to 129 LPW  
Delivered lumen range up to 1285m at 95+ CRI  
1.2" Regressed LED source for enhanced glare control  
Extruded aluminum construction with no visible hardware  
Companion to 3G's Madison product family



### OPTICS

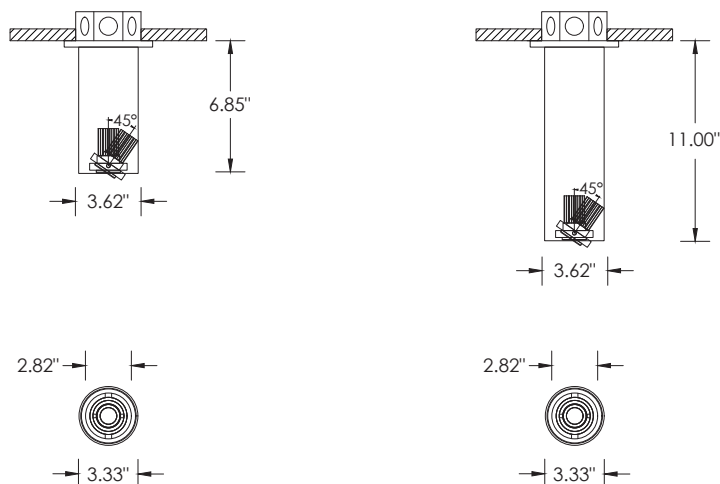


### PERFORMANCE

| LUMEN OUTPUT | DELIVERED LUMENS | SYSTEM WATTS | EFFICACY (LPW) |
|--------------|------------------|--------------|----------------|
| 700          | 700              | 5.9          | 120            |
| 1000         | 1000             | 8.4          | 119            |
| 1200         | 1200             | 10.4         | 116            |

BASED ON 95+ CRI, 3500K, 45D OPTIC  
Lumen output and actual wattage may vary +/- 5%

### DIMENSIONS



|                  |  |              |             |
|------------------|--|--------------|-------------|
| <b>PROJECT:</b>  |  | <b>TYPE:</b> |             |
| <b>CATALOG#:</b> |  | <b>DATE:</b> | <b>QTY:</b> |

| CAT. NO            | FIXTURE HEIGHT                                     | LUMEN OUTPUT   | CRI                  | COLOR TEMP   | BEAM ANGLE   |
|--------------------|--|--|----------------------|--|--|
| <b>3G-SDL33RM3</b> | <b>7H</b> - 7" HEIGHT *<br><b>11H</b> - 11" HEIGHT | <b>07</b> - 700 LUMENS<br><b>10</b> - 1000 LUMENS<br><b>12</b> - 1200 LUMENS | <b>H95</b> - 95+ CRI | <b>27K</b> - 2700K<br><b>30K</b> - 3000K<br><b>35K</b> - 3500K<br><b>40K</b> - 4000K | <b>30D</b> - 30°<br><b>45D</b> - 45°<br><b>65D</b> - 65° |
|                    | <small>*7H not available with 700lm</small>        | <small>All lumen outputs are<br/><b>delivered lumens</b> at 95+ CRI</small>  |                      |  |  |

| VOLTAGE                                    | DRIVER   | HOUSING & INSERT FINISH  | GIMBAL FINISH  |
|--|--|--|--|
| <b>UNV</b> - 120/277V<br><b>120</b> - 120V | <b>DIM</b> - 0-10V (100-1%)<br><b>LE</b> - PHASE DIM *<br><small>(TRIAC/ELV, 100-1%)</small> | <b>WH</b> - WHITE<br><b>BK</b> - BLACK<br><b>SV</b> - SILVER<br><b>CSF</b> - CUSTOM-3G | <b>NG</b> - NATURAL ALUMINUM<br><b>BG</b> - BLACK<br><b>WG</b> - WHITE |
|  | <small>*Phase dimming available in 120V only</small>   |  |  |

| OPTIONS   |
|---|
| <b>SF</b> - SOFTENING LENS *<br><b>HXB</b> - BLACK HEXCELL LOUVER *<br><b>FXC</b> - SEAMLESS CANOPY OPTION<br><b>CF</b> - CONDUIT FEED CANOPY |
| <small>*Maximum 1 optical accessory</small>   |

## PERFORMANCE

| LUMEN OUTPUT | DELIVERED LUMENS | SYSTEM WATTS | EFFICACY (LPW) |
|--------------|------------------|--------------|----------------|
| 700          | 700              | 5.9          | 120            |
| 1000         | 1000             | 8.4          | 119            |
| 1200         | 1200             | 10.4         | 116            |

BASED ON 95+ CRI, 3500K, 45D OPTIC  
Lumen output and actual wattage may vary +/- 5%

## MULTIPLIERS

| BEAM ANGLE |      |
|------------|------|
| 30D        | 1.01 |
| 45D        | 1.00 |
| 65D        | 1.05 |

| COLOR TEMP |      |
|------------|------|
| 2700K      | 0.98 |
| 3000K      | 1.00 |
| 3500K      | 1.00 |
| 4000K      | 1.02 |

## HOUSING

Extruded aluminum housing with powder coated finish  
Twist and lock construction with no visible hardware

## BEVELED INSERT

Machined aluminum beveled insert  
Solid aluminum double gimbal with dual axis adjustability (45°x45°)

## OPTICS

Proprietary anodized, aluminum reflectors  
Beam angle available in 30°, 45° and 65°  
Reflectors are field replaceable

## LED SYSTEM

Standard 95+ CRI  
Color consistency <2 SDCM  
Available in 27K, 30K, 35K, and 40K  
L90 > 50,000 hours

## ELECTRICAL

Standard 0-10V, constant current drivers  
100-1% dimming range and >0.9 power factor  
120V Forward Phase/Reverse Phase driver option (100-1%)  
Integral drivers are easily accessible through luminaire aperture

## MOUNTING

All hardware included for mounting to 4" octagonal junction box  
Conduit feed cut-out canopy option designed to mount to 4" octagonal junction box  
Twist and lock mechanism

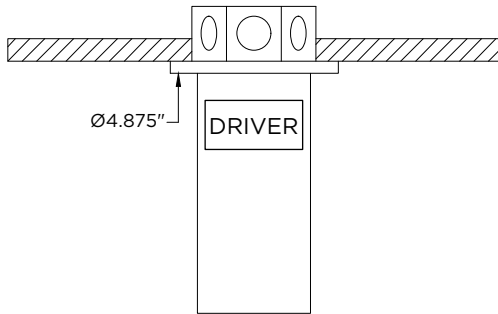
## LISTING

ETL listed and conforms to UL1598 standard  
Certified to CSA22.2 NO.250.0.  
Rated for dry or damp locations

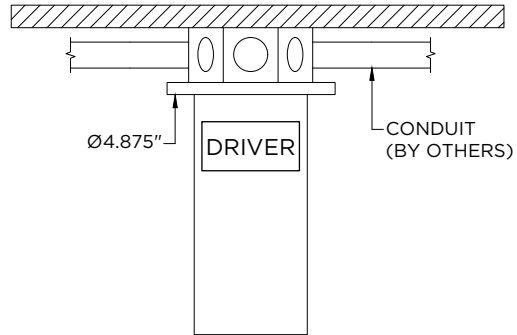
## WARRANTY

5 year limited warranty  
LED system rated for operation in ambient environments up to 25°C

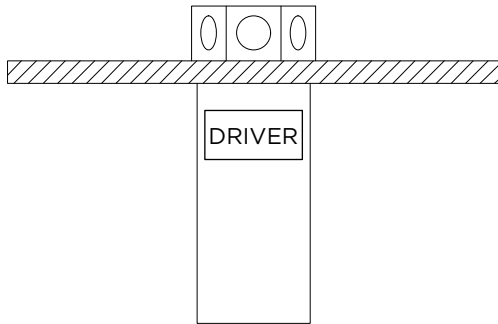
**STANDARD CANOPY**  
RECESSED J-BOX (BY OTHERS)



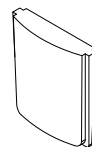
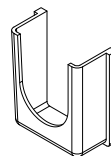
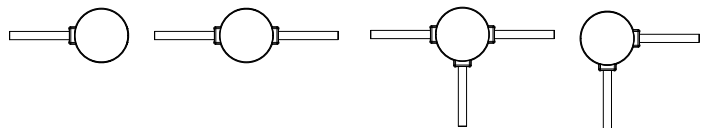
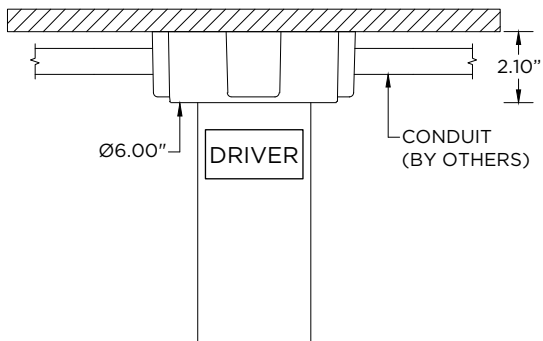
**STANDARD CANOPY**  
SURFACE J-BOX (BY OTHERS)



**FXC - SEAMLESS CANOPY**  
RECESSED J-BOX (BY OTHERS)



**CF - CONDUIT FEED CANOPY**  
SURFACE MOUNT J-BOX (BY OTHERS)



CONDUIT COVER  
3 PROVIDED WITH EACH  
CONDUIT FEED CANOPY

BLANK  
2 PROVIDED WITH EACH  
CONDUIT FEED CANOPY