

3G LIGHTING

3G-PDZ33S

3" SQUARE ZOIE PENDANT
7" AND 11" HEIGHT

3" square high performance Zoie pendant
Companion to 3G-DZ33S, Square Zoie Downlight
Regressed LED source provides maximum visual comfort, UGR <10
High gloss black or white louvers with proprietary optics and no glare
Extruded aluminum housing with powder coated finish
Lumen range up to 2000lm (80+ and 90+ CRI options)
100-1% dimming range standard with integral driver options



PROJECT:		TYPE:			
CATALOG#:		DATE:		QTY:	
CAT. NO	FIXTURE HEIGHT	LUMEN OUTPUT (DELIVERED LUMENS)	CRI	COLOR TEMP	
3G-PDZ33S	7H - 7" HEIGHT *	10 - 1000 LUMENS	S80 - 80+ CRI	27K - 2700K ¹	
	11H - 11" HEIGHT	15 - 1500 LUMENS	H90 - 90+ CRI	30K - 3000K	
		17 - 1750 LUMENS		35K - 3500K	
		20 - 2000 LUMENS		40K - 4000K ¹	
*7H up to 1750lm (80+CRI) *7H up to 1500lm (90+CRI)		Lumen outputs are delivered lumens based on 80+ CRI, 3000K source. See performance chart for all options			
BEAM ANGLE	VOLTAGE	DRIVER	HOUSING FINISH	LOUVER FINISH	
20D - 20°	UNV - 120/277V	DIM - 0-10V (100-1%)	WH - WHITE	BLV - BLACK	
40D - 40°	120 - 120V	LE - PHASE DIM (TRIAC/ELV, 100-1%) ³	BK - BLACK	WLV - WHITE	
60D - 60°	347 - 347V ²	D01 - 0-10V (100-0.1%)	SV - SILVER		
		DALI - DALI (100-1%) ⁴	CSF- CUSTOM-3G		
		DHL2 - LUTRON HI-LUME LDE1 (1% ECOSYSTEM)			
		DMX - DMX (100-0%) [*]			
		*DMX driver only available with rigid stem suspension			
CANOPY TYPE	CANOPY FINISH	SUSPENSION TYPE	SUSPENSION LENGTH		
CN - CANOPY (STANDARD)	WCF - WHITE (STANDARD)	WC - WHITE CABLE	C60 - 60" CABLE		
CF - CONDUIT FEED CANOPY	BCF - BLACK	BC - BLACK CABLE	C120 - 120" CABLE		
	SCF - SILVER	RSW - WHITE RIGID STEM	S48 - 48" STEM		
	CSCF - CUSTOM-3G	RSB - BLACK RIGID STEM	S96 - 96" STEM		
		RSS - SILVER RIGID STEM			
		CSRS- CUSTOM-3G			
All suspension options are field cuttable					
OPTIONS					
EMR - EMERGENCY BATTERY ⁵ (REMOTE)					

¹ 2700K only available in 90CRI and 4000K only available in 80CRI
² 347 available in "DIM" 0-10V only (100-1%). Not available with 7" height
³ Phase dimming options available in 120V only
⁴ DALI-2 (Type 6) provided as standard
⁵ Emergency battery installed remotely by others. Not accessible through the inside of the fixture

PERFORMANCE

LUMEN OUTPUT	DELIVERED LUMENS	SYSTEM WATTS	EFFICACY (LPW)
1000	1000	8.4	122.4
1500	1500	13.2	117.4
1750	1750	15.4	116.8
2000	2000	18.4	111.7

BASED ON 80+ CRI, 3000K WITH 20D OPTIC
Lumen output and actual wattage may vary +/- 5%

MULTIPLIERS

COLOR TEMP	80+ CRI
2700K	N/A
3000K	1.00
3500K	0.97
4000K	1.16

COLOR TEMP	90+ CRI
2700K	0.77
3000K	0.86
3500K	0.86
4000K	N/A

BEAM ANGLE	
20D	1.00
40D	0.97
60D	0.94

HOUSING

Extruded aluminum housing with powder coated finish

OPTICS

3" aperture with regressed LED source for maximum visual comfort
High gloss black or white louvers with proprietary optics and no glare
Polycarbonate multi-faceted reflectors
Available in 20°, 40° and 60°
UGR <10

ELECTRICAL

Standard 0-10V, constant current drivers with 100-1% dimming range and >0.9 power factor
Standard 120/277V universal voltage with several driver options
All drivers are integral and easily accessible within luminaire

LED SYSTEM

Osram LED source
Color consistency <2 SDCM
80+ and 90+ CRI
Available in 27K, 30K, 35K, and 40K
L90 >60,000 hours

MOUNTING

1/2" diameter rigid stem option with sloped ceiling adapter (field cuttable)
Standard, 18-gauge, 5 conductor single circuit braided power feed (black and white finish)
All hardware included for mounting to 4" octagonal junction box
Canopy provided in white finish as standard
Conduit feed cut-out canopy option designed to mount to 4" octagonal junction box

EMERGENCY

Remote emergency battery installed by others (not accessible through fixture aperture)
7W output for 90 minutes (+/- 700lm at 80+ CRI)
CA Title 24 Certified
Maximum remote mounting distance: 50ft (12AWG) or 25ft (14AWG)
Caution: Emergency Battery utilizes more than one power source and servicing should be performed by qualified personnel

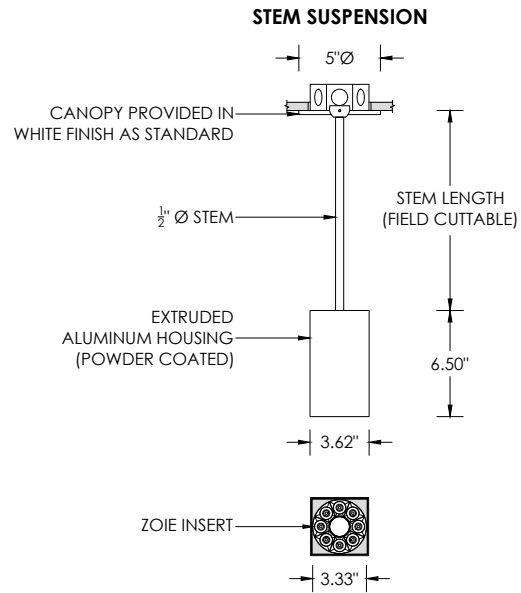
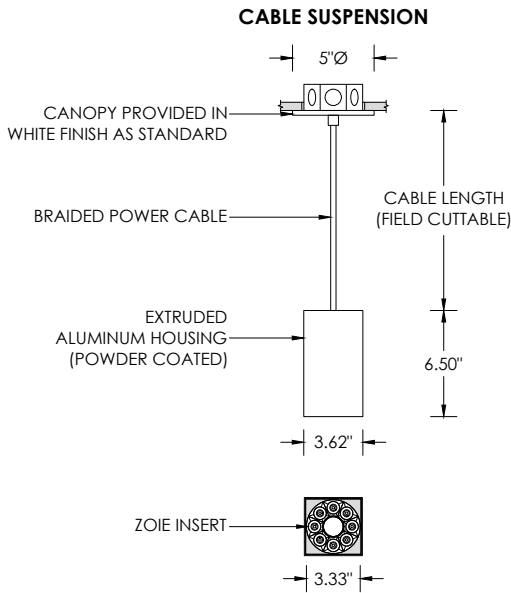
LISTING

ETL listed and conforms to UL1598 standard
Certified to CSA22.2 NO.250.0.
Rated for indoor locations

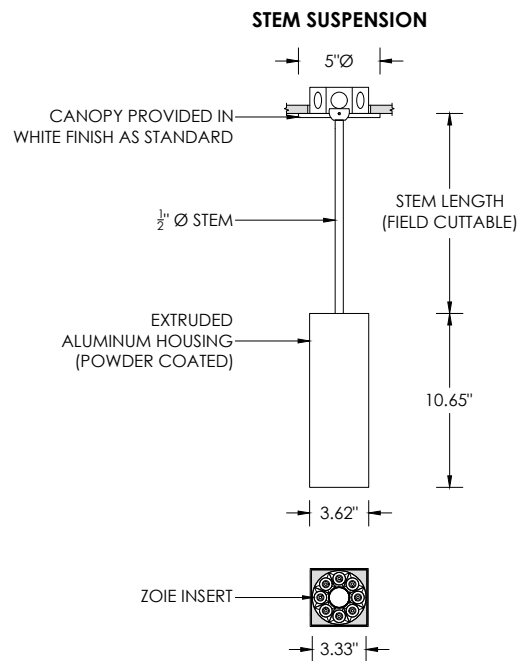
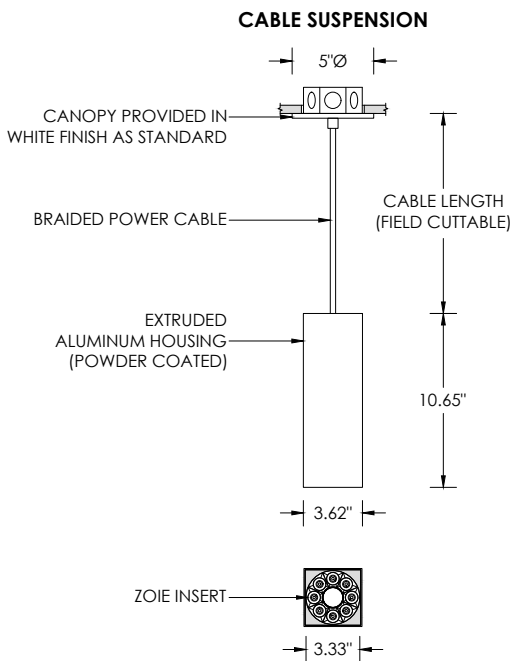
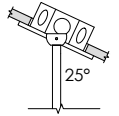
WARRANTY

5 year limited warranty
LED system rated for operation in ambient environments up to 25°C

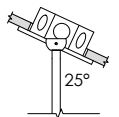
RECESSED 4" OCTAGONAL JUNCTION BOX BY OTHERS
STANDARD CANOPY MOUNT



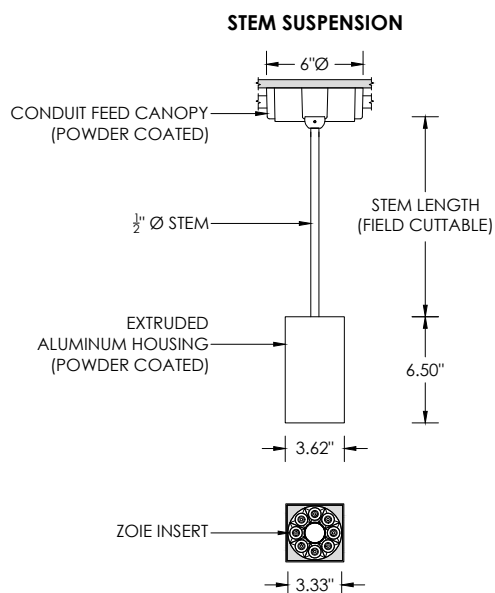
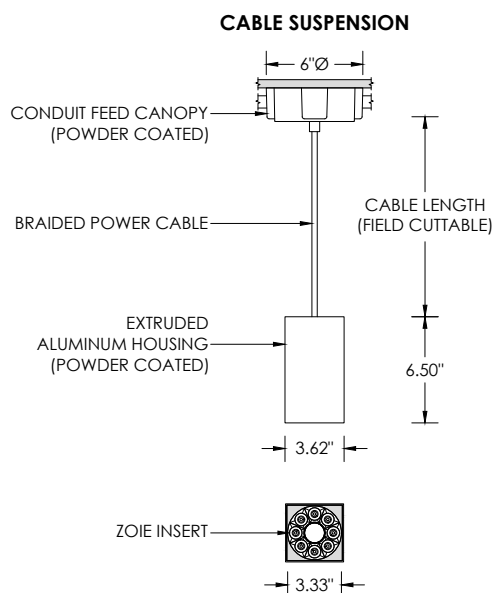
SUITABLE FOR SLOPED CEILING



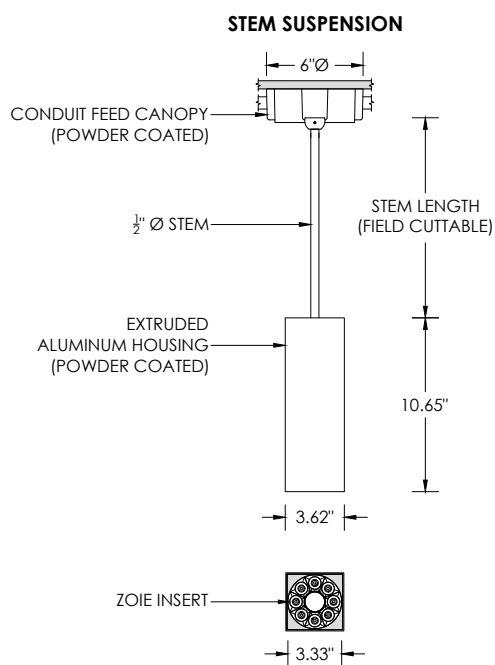
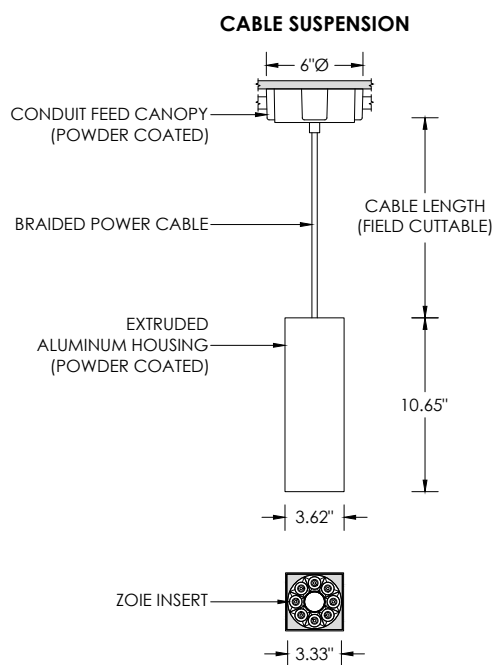
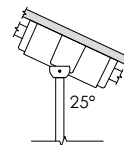
SUITABLE FOR SLOPED CEILING



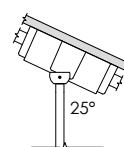
SURFACE 4" OCTAGONAL X 1.5" DEEP JUNCTION BOX BY OTHERS
CONDUIT FEED CANOPY MOUNT (CFX OPTION)



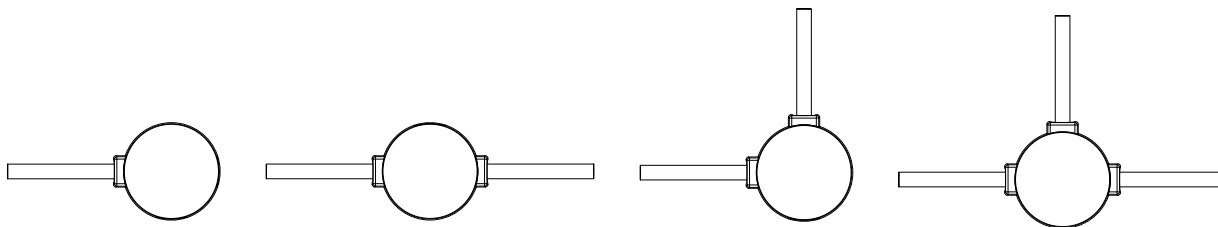
SUITABLE FOR SLOPED CEILING



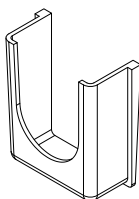
SUITABLE FOR SLOPED CEILING



CONDUIT FEED CANOPY MOUNTING OPTIONS



CONDUIT COVER
3 PROVIDED WITH EACH
CONDUIT FEED CANOPY



BLANK
2 PROVIDED WITH EACH
CONDUIT FEED CANOPY

