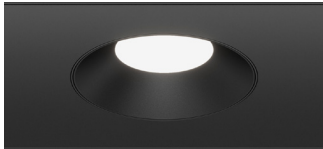


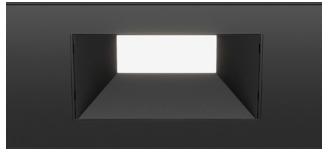


## ILLUMINATED OPTIONS

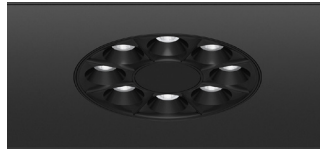
**DL33R** - 3" ROUND DOWNLIGHT



**DL33S** - 3" SQUARE DOWNLIGHT



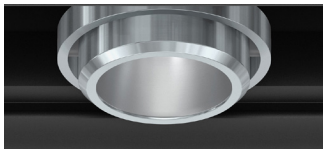
**DZ33R** - 3" ROUND ZOIE



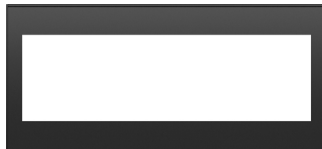
**DZ33S** - 3" SQUARE ZOIE



**M7** - MADISON DUAL AXIS



**4LI** - 3.5" LINIA



## INTEGRATED MECHANICAL OPTIONS

**CM** - CAMERA



**SP** - SPEAKER



**OS** - OCCUPANCY SENSOR



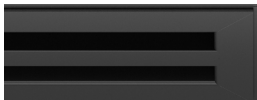
**WF** - WIFI ACCESS POINT



**MC** - MICROPHONE



**HV** - HVAC



**SD** - SMOKE DETECTOR



**ST** - FIRE STROBE



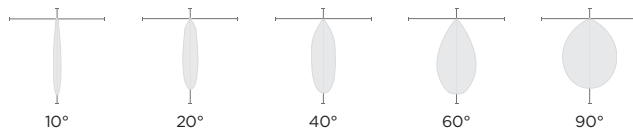
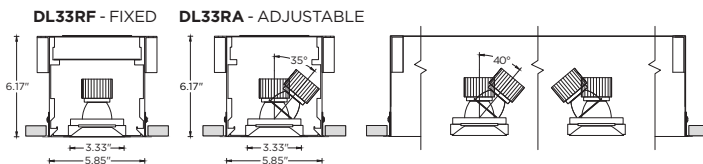
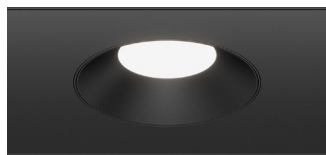
**FS** - FIRE SPRINKLER



**JB** - JUNCTION BOX



## DL33R - 3" ROUND DOWNLIGHT



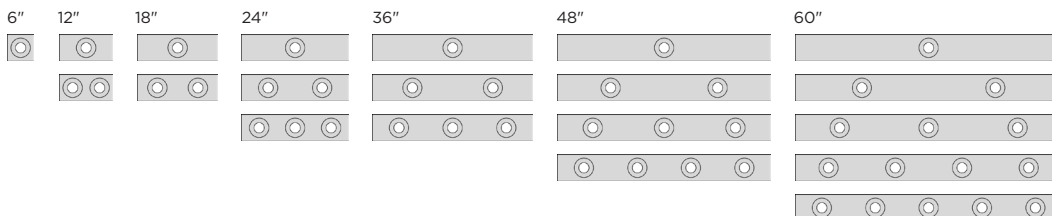
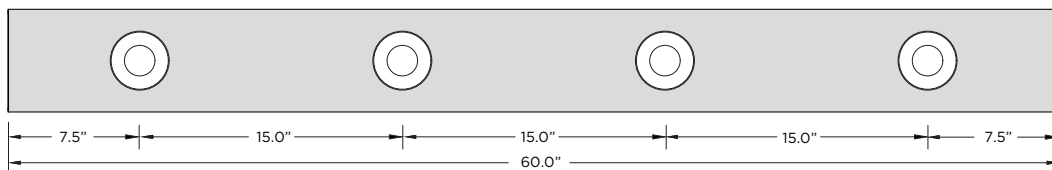
**DOWNLIGHT SIZE:** 3.33"  
**COLOR TEMP:** 27K, 30K, 35K, 40K  
**CRI:** 95+  
**COLOR CONSISTENCY** <2 SDCM  
**UGR:** <16

**DELIVERED LUMENS:** 1000 - 3000 LM \*  
**EFFICACY:** 96 - 116 LPW \*\*  
**WATTAGE:** 8.6 - 31.2 W \*\*  
**L90:** 50,000 HOURS

**OPTICS:** 10°, 20°, 40°, 60°, 90°

**ADJUSTABILITY:** 0° - 25° tilt  
across width  
0° - 40° tilt  
across length  
360° lockable  
rotation

NOTE: ON CENTER SPACING = SECTION LENGTH/NUMBER OF DOWNLIGHTS



Machined aluminum faceplate with  
trimless downlight integration  
Cast aluminum beveled insert with  
matte powder coated finish  
3" aperture with regressed LED  
source for enhanced glare control  
Proprietary anodized, aluminum  
reflectors are field replaceable  
(10° reflector not interchangeable)  
Softening lens supplied standard

Standard 0-10V, constant current  
drivers with 100-1% dimming range  
and >0.9 power factor  
Standard 120/277V universal  
voltage with several driver options  
All drivers are integral and easily  
accessible through luminaire aperture

\*Round adjustable available up to 1500 LM  
\*\*Based on DL33RF, 95+ CRI, 40° and 35K

## 3" ROUND FIXED

| LUMEN OUTPUT | DELIVERED LUMENS | SYSTEM WATTS | EFFICACY (LPW) |
|--------------|------------------|--------------|----------------|
| 1000         | 1000             | 8.6          | 116            |
| 1500         | 1500             | 13.5         | 111            |
| 2000         | 2000             | 18.3         | 109            |
| 2500         | 2500             | 25.8         | 97             |
| 3000         | 3000             | 31.2         | 96             |

BASED ON 95+ CRI, 3500K, 40D OPTIC WITH SOFTENING LENS  
Lumen output and actual wattage may vary +/- 5%

## 3" ROUND ADJUSTABLE

| LUMEN OUTPUT | DELIVERED LUMENS | SYSTEM WATTS | EFFICACY (LPW) |
|--------------|------------------|--------------|----------------|
| 1000         | 1000             | 9.3          | 109            |
| 1500         | 1500             | 14.0         | 107            |

BASED ON 95+ CRI, 3500K, 40D OPTIC WITH SOFTENING LENS  
Lumen output and actual wattage may vary +/- 5%

## MULTIPLIERS

| BEAM ANGLE |      |
|------------|------|
| 10D        | 0.97 |
| 20D        | 1.24 |
| 40D        | 1.00 |
| 60D        | 0.97 |
| 90D        | 0.91 |

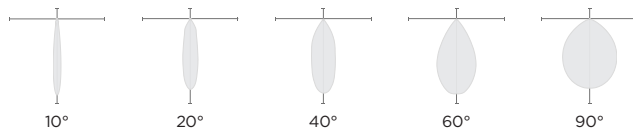
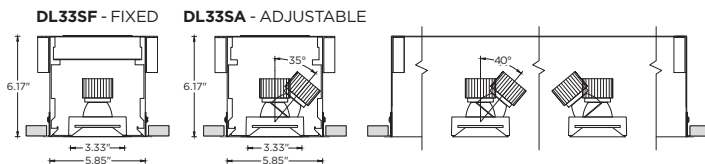
| COLOR TEMP |      |
|------------|------|
| 2700K      | 0.98 |
| 3000K      | 1.00 |
| 3500K      | 1.00 |
| 4000K      | 1.02 |

## MULTIPLIERS

| BEAM ANGLE |      |
|------------|------|
| 10D        | 0.80 |
| 20D        | 1.27 |
| 40D        | 1.00 |
| 60D        | 0.88 |

| COLOR TEMP |      |
|------------|------|
| 2700K      | 0.98 |
| 3000K      | 1.00 |
| 3500K      | 1.00 |
| 4000K      | 1.02 |

## DL33S - 3" SQUARE DOWNLIGHT



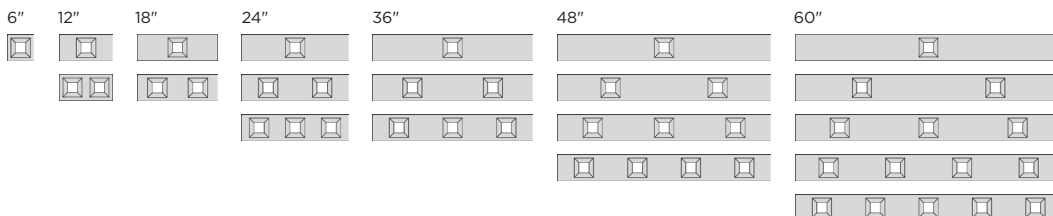
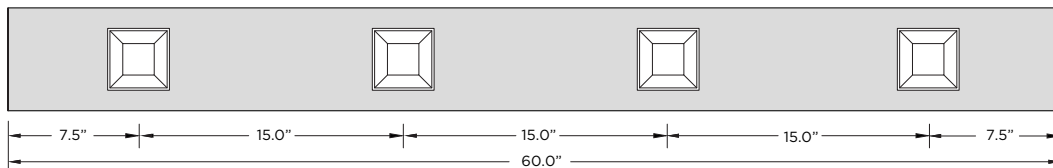
**DOWNLIGHT SIZE:** 3"  
**COLOR TEMP:** 27K, 30K, 35K, 40K  
**CRI:** 95+  
**COLOR CONSISTENCY** <2 SDCM  
**UGR:** <16

**DELIVERED LUMENS:** 1000 - 3000 LM \*  
**EFFICACY:** 100 - 114 LPW \*\*  
**WATTAGE:** 9.3 - 29.9 W \*\*  
**L90:** 50,000 HOURS

**OPTICS:** 10°, 20°, 40°, 60°, 90°

**ADJUSTABILITY:** 0° - 25° tilt  
across width  
0° - 40° tilt  
across length  
360° lockable  
rotation

NOTE: ON CENTER SPACING = SECTION LENGTH/NUMBER OF DOWNLIGHTS



Machined aluminum faceplate with  
trimless downlight integration  
Cast aluminum beveled insert with  
matte powder coated finish  
3" aperture with regressed LED  
source for enhanced glare control  
Proprietary anodized, aluminum  
reflectors are field replaceable  
(10° reflector not interchangeable)  
Softening lens supplied standard

Standard 0-10V, constant current  
drivers with 100-1% dimming range  
and >0.9 power factor  
Standard 120/277V universal  
voltage with several driver options  
All drivers are integral and easily  
accessible through luminaire aperture

\*Square adjustable available up to 1500 LM  
\*\*Based on DL33SF, 95+ CRI, 40° and 35K

## 3" SQUARE FIXED

| LUMEN OUTPUT | DELIVERED LUMENS | SYSTEM WATTS | EFFICACY (LPW) |
|--------------|------------------|--------------|----------------|
| 1000         | 1000             | 9.3          | 114            |
| 1500         | 1500             | 13.6         | 112            |
| 2000         | 2000             | 18.4         | 109            |
| 2500         | 2500             | 23.9         | 104            |
| 3000         | 3000             | 29.9         | 100            |

BASED ON 95+ CRI, 3500K, 40D OPTIC WITH SOFTENING LENS  
Lumen output and actual wattage may vary +/- 5%

## 3" SQUARE ADJUSTABLE

| LUMEN OUTPUT | DELIVERED LUMENS | SYSTEM WATTS | EFFICACY (LPW) |
|--------------|------------------|--------------|----------------|
| 1000         | 1000             | 9.6          | 104            |
| 1500         | 1500             | 15.6         | 96             |

BASED ON 95+ CRI, 3500K, 40D OPTIC WITH SOFTENING LENS  
Lumen output and actual wattage may vary +/- 5%

## MULTIPLIERS

| BEAM ANGLE |      |
|------------|------|
| 10D        | 0.90 |
| 20D        | 1.17 |
| 40D        | 1.00 |
| 60D        | 0.97 |
| 90D        | 0.85 |

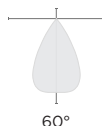
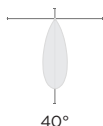
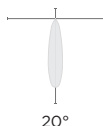
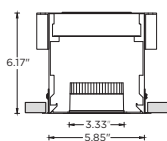
| COLOR TEMP |      |
|------------|------|
| 2700K      | 0.98 |
| 3000K      | 1.00 |
| 3500K      | 1.00 |
| 4000K      | 1.02 |

## MULTIPLIERS

| BEAM ANGLE |      |
|------------|------|
| 10D        | 0.93 |
| 20D        | 1.25 |
| 40D        | 1.00 |
| 60D        | 0.98 |

| COLOR TEMP |      |
|------------|------|
| 2700K      | 0.98 |
| 3000K      | 1.00 |
| 3500K      | 1.00 |
| 4000K      | 1.02 |

**DZ33R - 3" ROUND ZOIE**



**DOWNLIGHT SIZE:** 3"  
**COLOR TEMP:** 27K, 30K, 35K, 40K  
**CRI:** 80+, 90+  
**COLOR CONSISTENCY** <2 SDCM  
**UGR:** <10

**DELIVERED LUMENS:** 1000 - 3000 LM  
**EFFICACY:** 94 - 122 LPW \*  
**WATTAGE:** 8.4 - 32.8 W \*  
**L90:** 60,000 HOURS

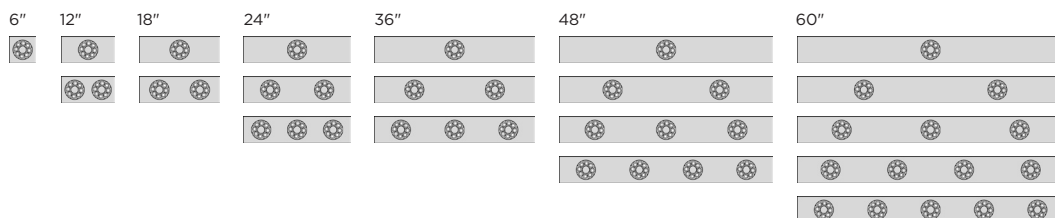
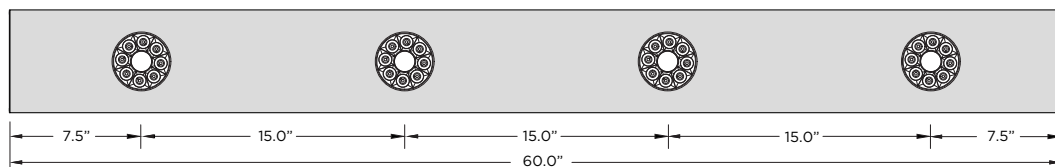
**OPTICS:** 20°, 40°, 60°

Machined aluminum faceplate with trimless downlight integration  
3" aperture with regressed LED source for maximum visual comfort  
High gloss black or white louvers with proprietary optics and no glare  
Proprietary, polycarbonate multi-faceted reflectors (field replaceable)

Standard 0-10V, constant current drivers with 100-1% dimming range and >0.9 power factor  
Standard 120/277V universal voltage with several driver options  
All drivers are integral and easily accessible through luminaire aperture

\*Based on 80+ CRI, 40° and 3000K

NOTE: ON CENTER SPACING = SECTION LENGTH/NUMBER OF DOWNLIGHTS



**3" ROUND ZOIE**

| LUMEN OUTPUT | DELIVERED LUMENS | SYSTEM WATTS | EFFICACY (LPW) |
|--------------|------------------|--------------|----------------|
| 1000         | 1000             | 8.4          | 122            |
| 1500         | 1500             | 13.2         | 117            |
| 2000         | 2000             | 18.4         | 112            |
| 2500         | 2500             | 25.4         | 101            |
| 3000         | 3000             | 32.8         | 94             |

BASED 80+ CRI, 30K, 40D OPTIC  
Lumen output and actual wattage may vary +/- 5%

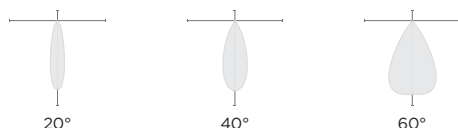
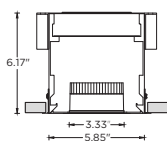
**MULTIPLIERS**

| BEAM ANGLE |      |
|------------|------|
| 20D        | 1.05 |
| 40D        | 1.00 |
| 60D        | 0.94 |

| 80+ CRI COLOR TEMP |      |
|--------------------|------|
| 2700K              | N/A  |
| 3000K              | 1.00 |
| 3500K              | 0.97 |
| 4000K              | 1.16 |

| 90+ CRI COLOR TEMP |      |
|--------------------|------|
| 2700K              | 0.77 |
| 3000K              | 0.86 |
| 3500K              | 0.86 |
| 4000K              | N/A  |

**DZ33S - 3" SQUARE ZOIE**



**DOWNLIGHT SIZE:** 3"  
**COLOR TEMP:** 27K, 30K, 35K, 40K  
**CRI:** 80+, 90+  
**COLOR CONSISTENCY** <2 SDCM  
**UGR:** <10

**DELIVERED LUMENS:** 1000 - 3000 LM  
**EFFICACY:** 94 - 122 LPW \*  
**WATTAGE:** 8.4 - 32.8 W \*  
**L90:** 60,000 HOURS

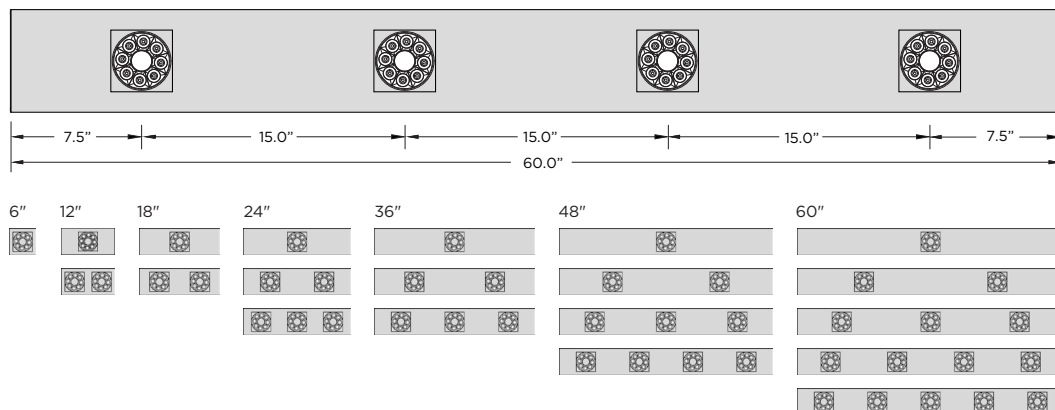
**OPTICS:** 20°, 40°, 60°

Machined aluminum faceplate with trimless downlight integration  
3" aperture with regressed LED source for maximum visual comfort  
High gloss black or white louvers with proprietary optics and no glare  
Proprietary, polycarbonate multi-faceted reflectors (field replaceable)

Standard 0-10V, constant current drivers with 100-1% dimming range and >0.9 power factor  
Standard 120/277V universal voltage with several driver options  
All drivers are integral and easily accessible through luminaire aperture

\*Based on 80+ CRI, 40° and 3000K

NOTE: ON CENTER SPACING = SECTION LENGTH/NUMBER OF DOWNLIGHTS



**3" SQUARE ZOIE**

| LUMEN OUTPUT | DELIVERED LUMENS | SYSTEM WATTS | EFFICACY (LPW) |
|--------------|------------------|--------------|----------------|
| 1000         | 1000             | 8.4          | 122            |
| 1500         | 1500             | 13.2         | 117            |
| 2000         | 2000             | 18.4         | 112            |
| 2500         | 2500             | 25.4         | 101            |
| 3000         | 3000             | 32.8         | 94             |

BASED 80+ CRI, 30K, 40D OPTIC  
Lumen output and actual wattage may vary +/- 5%

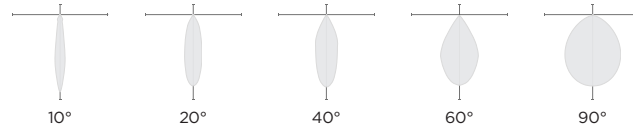
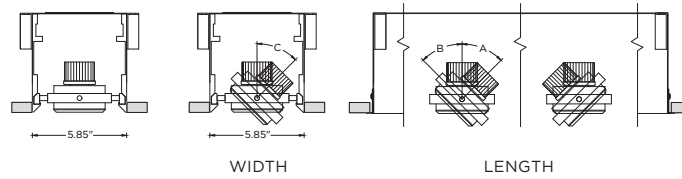
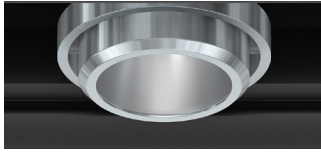
**MULTIPLIERS**

| BEAM ANGLE |      |
|------------|------|
| 20D        | 1.05 |
| 40D        | 1.00 |
| 60D        | 0.94 |

| 80+ CRI COLOR TEMP |      |
|--------------------|------|
| 2700K              | N/A  |
| 3000K              | 1.00 |
| 3500K              | 0.97 |
| 4000K              | 1.16 |

| 90+ CRI COLOR TEMP |      |
|--------------------|------|
| 2700K              | 0.77 |
| 3000K              | 0.86 |
| 3500K              | 0.86 |
| 4000K              | N/A  |

**M7 - MADISON DUAL AXIS**



**GIMBAL APERTURE:** 2.75"  
**COLOR TEMP:** 27K, 30K, 35K, 40K  
**CRI:** 95+  
**COLOR CONSISTENCY** <2 SDCM

**DELIVERED LUMENS:** 1000 - 4000 LM  
**EFFICACY:** 101 - 115 LPW \*\*  
**WATTAGE:** 8.7 - 39.5 W \*\*  
**L90:** 50,000 HOURS

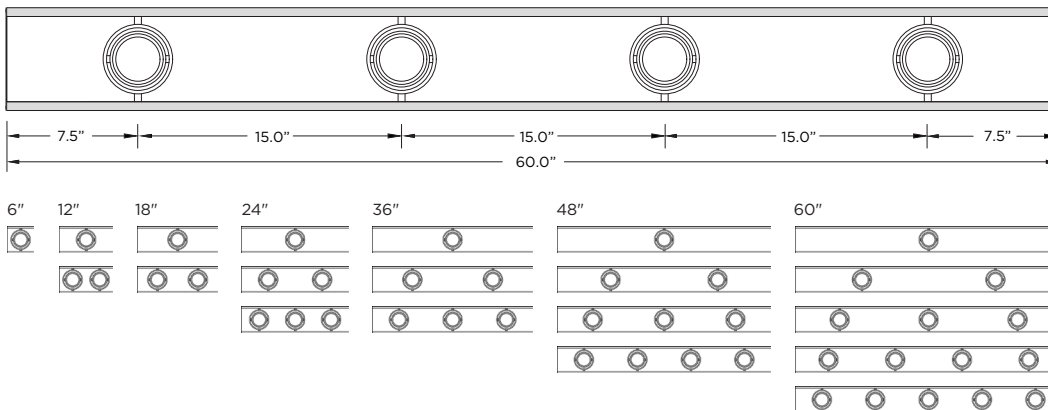
**OPTICS:** 10°, 20°, 40°, 60°, 90°

**ADJUSTABILITY:**

| LUMEN OUTPUT | A   | B   | C   |
|--------------|-----|-----|-----|
| Up to 3500lm | 45° | 45° | 30° |
| 4000lm       | 45° | 45° | 20° |

Solid aluminum double gimbal with dual axis adjustability  
Individual fixture heads can be repositioned in either direction (up to 18")  
Each double gimbal can be locked in place

NOTE: ON CENTER SPACING = SECTION LENGTH/NUMBER OF DOWNLIGHTS



Proprietary anodized, aluminum reflectors  
Reflectors are field replaceable (10° and 20° reflectors not interchangeable)

Standard 0-10V, constant current drivers with 100-1% dimming range and >0.9 power factor  
Standard 120/277V universal voltage with several driver options  
All drivers are integral and easily accessible through luminaire aperture

\*Based on 95+ CRI, 40° and 3500K

**MADISON DUAL AXIS**

| LUMEN OUTPUT | DELIVERED LUMENS | SYSTEM WATTS | EFFICACY (LPW) |
|--------------|------------------|--------------|----------------|
| 1000         | 1000             | 8.7          | 115            |
| 1500         | 1500             | 13.1         | 115            |
| 2000         | 2000             | 18.6         | 108            |
| 2500         | 2500             | 23.2         | 108            |
| 3000         | 3000             | 29.5         | 102            |
| 3500         | 3500             | 34.7         | 101            |
| 4000         | 4000             | 39.5         | 101            |

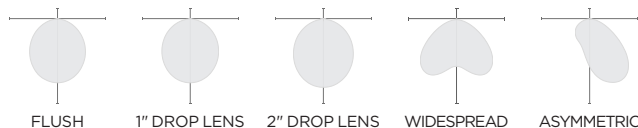
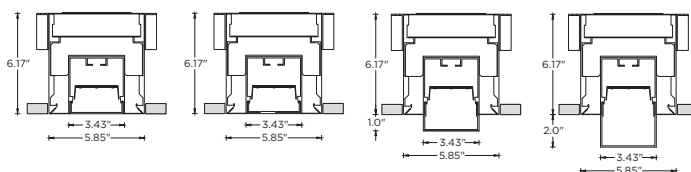
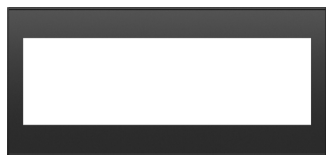
BASED ON 95+ CRI, 3500K, 40D OPTIC  
Lumen output and actual wattage may vary +/- 5%

**MULTIPLIERS**

| BEAM ANGLE |      |
|------------|------|
| 10D        | 0.92 |
| 20D        | 1.07 |
| 40D        | 1.00 |
| 60D        | 1.00 |
| 90D        | 0.90 |

| COLOR TEMP |      |
|------------|------|
| 2700K      | 0.98 |
| 3000K      | 1.00 |
| 3500K      | 1.00 |
| 4000K      | 1.02 |

**4LI - 3.5" LINIA**



**LINEAR APERTURE:** 3.43"  
**COLOR TEMP:** 27K, 30K, 35K, 40K  
**CRI:** 80+, 90+  
**R9 VALUE:** 56  
**COLOR CONSISTENCY** <3 SDCM

**DELIVERED LUMENS:** 250 - 1000 LM/FT  
**EFFICACY:** 138 - 151 LPW \*  
**WATTAGE:** 1.7 - 7.3 W/FT \*  
**L90:** 60,000 HOURS

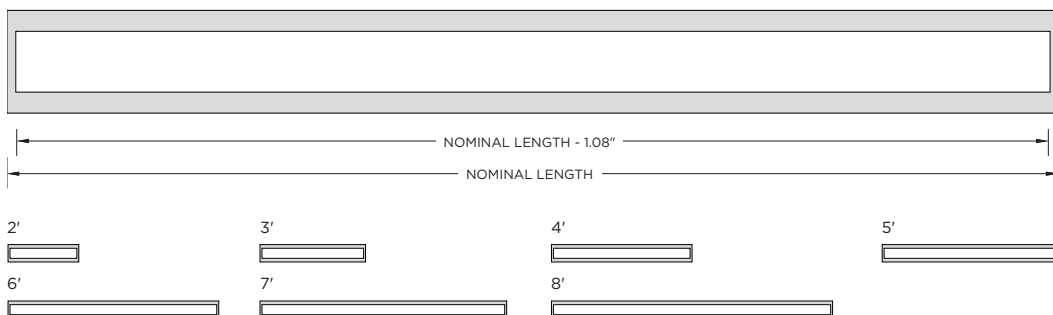
**OPTICS:** FLUSH,  
1" - 2" DROP LENS,  
WIDESPREAD,  
ASYMMETRIC

Proprietary LED system

Extruded, satin acrylic lens  
designed for optimal performance  
and glare control  
Lens options include flush, 1" and 2"  
drops with illuminated end caps  
High performance asymmetric  
optics available

Standard 0-10V, constant current  
drivers with 100-1% dimming range  
and >0.9 power factor  
Standard 120/277V universal  
voltage with several driver options  
All drivers are integral and easily  
accessible through luminaire aperture

\*Based on 80+ CRI and 3500K



**3.5" LINIA**

|                  | FLUSH        |                | 1" DROP      |                | 2" DROP      |                | WIDESPREAD   |                | ASYMMETRIC   |                |
|------------------|--------------|----------------|--------------|----------------|--------------|----------------|--------------|----------------|--------------|----------------|
| DELIVERED LUMENS | SYSTEM WATTS | EFFICACY (LPW) | SYSTEM WATTS | EFFICACY (LPW) | SYSTEM WATTS | EFFICACY (LPW) | SYSTEM WATTS | EFFICACY (LPW) | SYSTEM WATTS | EFFICACY (LPW) |
| 250              | 1.7          | 145            | 1.7          | 151            | 1.7          | 146            | 1.7          | 144            | 1.7          | 144            |
| 500              | 3.4          | 145            | 3.3          | 151            | 3.4          | 146            | 3.5          | 144            | 3.5          | 144            |
| 750              | 5.2          | 143            | 5.1          | 148            | 5.3          | 143            | 5.3          | 141            | 5.3          | 141            |
| 1000             | 7.2          | 140            | 6.9          | 145            | 7.2          | 139            | 7.3          | 138            | 7.3          | 138            |

DELIVERED LUMENS PER FOOT BASED ON 80+ CRI, 3500K  
Lumen output and actual wattage may vary +/- 5%

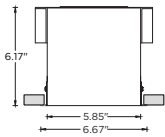
**MULTIPLIERS**

| 80+ CRI COLOR TEMP |      |
|--------------------|------|
| 2700K              | N/A  |
| 3000K              | 0.97 |
| 3500K              | 1.00 |
| 4000K              | 1.02 |

| 90+ CRI COLOR TEMP |      |
|--------------------|------|
| 2700K              | 0.78 |
| 3000K              | 0.83 |
| 3500K              | 0.86 |
| 4000K              | 0.88 |

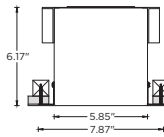
## HARD CEILING

### WT - TRIM



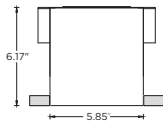
RECOMMENDED CEILING  
OPENING 6.30"

### XTR - TRIMLESS (DRYWALL)

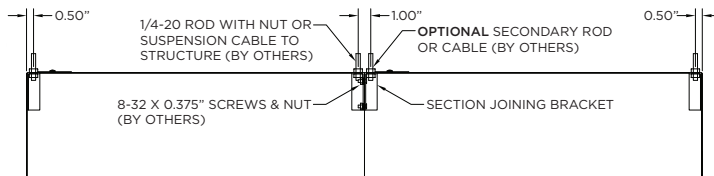


RECOMMENDED CEILING  
OPENING 6.20"

### FX - FLANGELESS

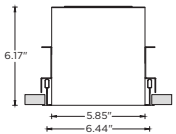


RECOMMENDED CEILING  
OPENING 5.95"

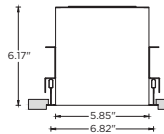


## GRID CEILING MOUNTING

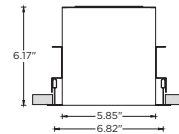
### 9L - 9/16" LAYIN



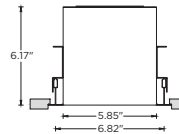
### 9TG - 9/16" TEGULAR



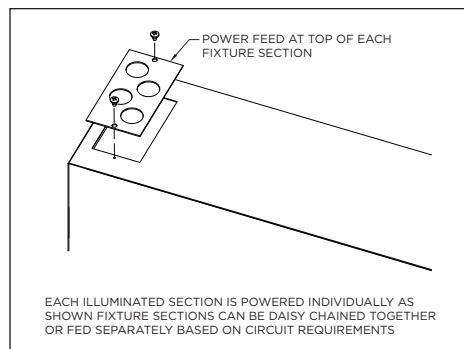
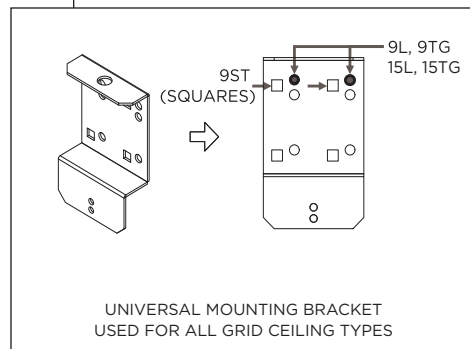
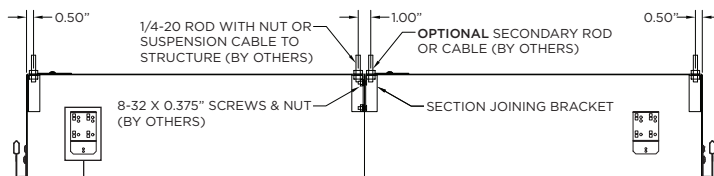
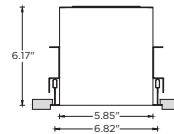
### 15L - 15/16" LAYIN



### 15TG - 15/16" TEGULAR



### 9ST - 9/16" SLOT TEE TEGULAR



## HOUSING

IC Housing constructed in extruded aluminum and cold rolled steel  
Designed to integrate various illuminated and mechanical options  
Individual units and continuous runs available in 1" increments  
Standard matte black powder coated finish with optional matte white finish  
Aluminum trim flange with matte white powder coated finish and minimal 0.400" overlap  
Trimless model features a satin coat mudding flange for seamless ceiling integration  
Maximum ceiling thickness of 3.75"

## MOUNTING

New construction housing suspended via 1/4" threaded rod or suspension cables (by others)  
Trim fixture designed for use in drywall, wood, and other architectural ceiling materials  
Trimless fixture designed for use in drywall, mud-in ceiling applications  
Flangeless fixture designed for use in wood ceilings  
Suitable for various grid ceiling applications (see mounting details)

## LISTING

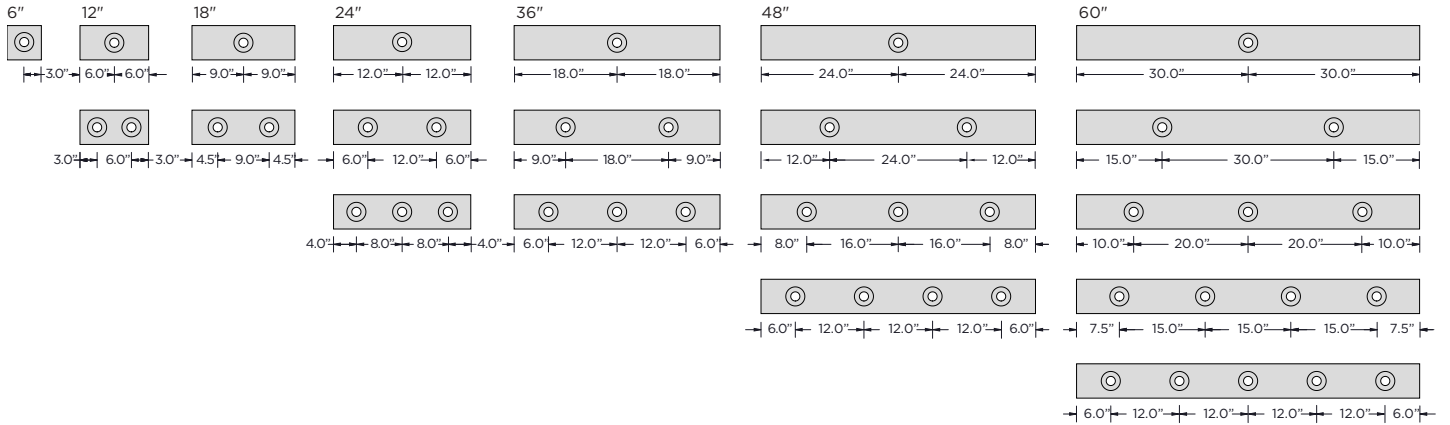
ETL listed and conforms to UL1598 standard. Certified to CSA22.2 NO.250.0.  
Rated for indoor dry or damp locations  
IC rated - Suitable for direct contact with insulation

## WARRANTY

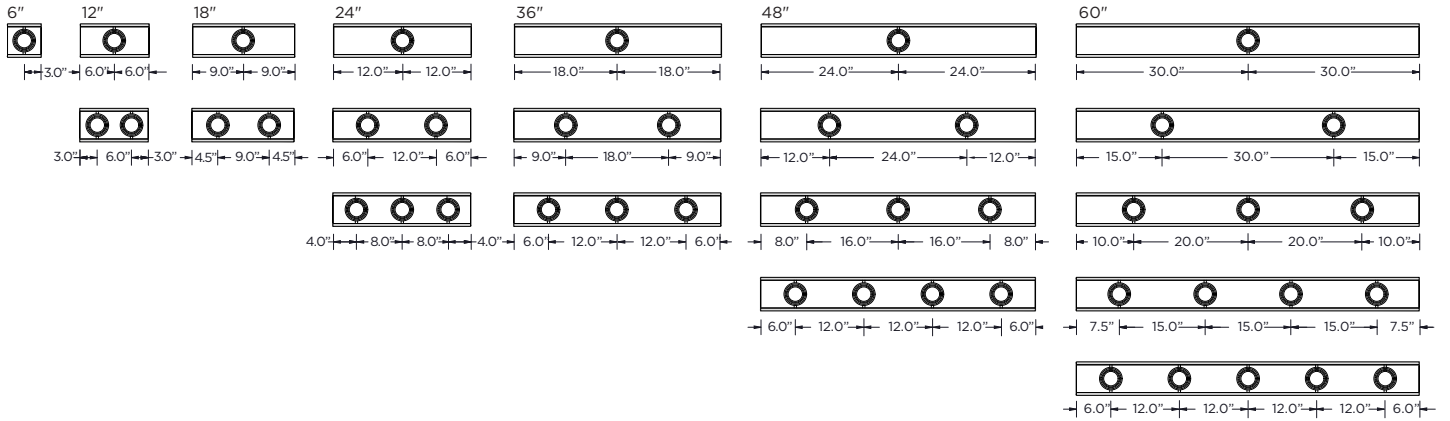
5 Year Warranty on LED and drivers  
Manufacturer 1 Year Warranty for defects in material and workmanship under normal use  
Ambient temperature at fixture should not exceed 25°C



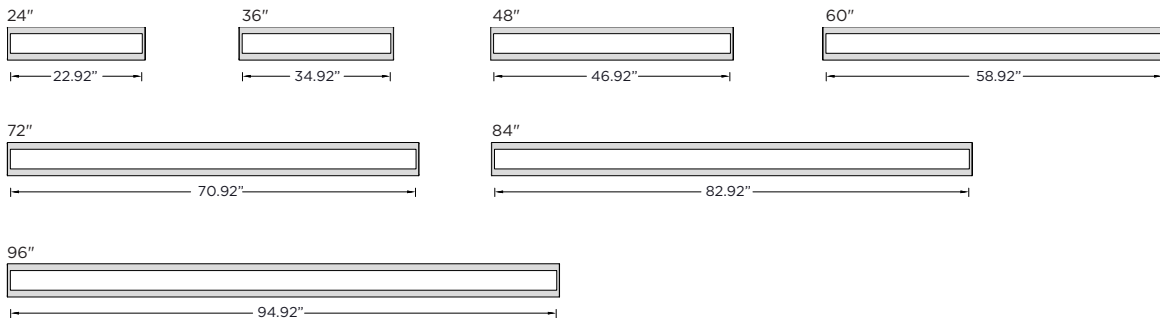
**STANDARD DOWNLIGHT SECTIONS AND TYPICAL SPACING (CONSULT 3G FOR CUSTOM CONFIGURATIONS)**



**STANDARD MADISON GIMBAL SECTIONS AND TYPICAL SPACING (CONSULT 3G FOR CUSTOM CONFIGURATIONS)**



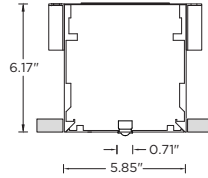
**STANDARD LINIA SECTIONS (CONSULT 3G FOR CUSTOM CONFIGURATIONS)**



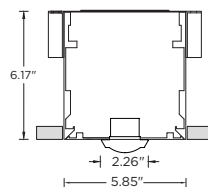
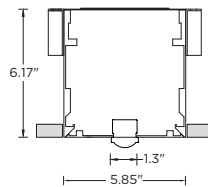
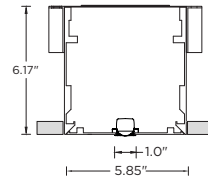
## OS - OCCUPANCY SENSOR



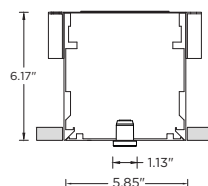
Machined aluminum faceplate and adapting hardware by 3G  
Faceplate powder coated to match housing finish  
5.85" x 6.00" long section  
Occupancy sensor by others



## ENCELIUM



## LUTRON



**OSV  
SENSORSWITCH VERTEX**  
Wireless daylight and occupancy sensor  
Compatible with 0-10V (100-1%) & (100-0.1%)

[SPEC SHEET](#)

**OSE  
ENCELIUM EN-CLM-PIR-DD-ZB**  
Wireless daylight and occupancy sensor  
Compatible with 0-10V (100-1%) & DALI

[SPEC SHEET](#)

**OSR  
nLIGHT RES7**  
Wireless daylight and occupancy sensor  
Compatible with 0-10V (100-1%) & (100-0.1%)

[SPEC SHEET](#)

**OSF  
LEGRAND FS-355**  
Wired daylight and occupancy sensor  
Compatible with 0-10V, Dali, Forward Phase, Ecosystem

[SPEC SHEET](#)

**OSA  
LUTRON ATHENA**  
Wireless daylight and occupancy sensor  
Compatible with 0-10V (100-1%) & DALI

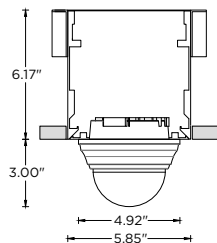
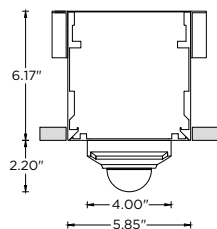
[SPEC SHEET](#)

NOTES:  
All integrated component photos may vary from items shown on this specification sheet  
Manufacturers or models not shown may be compatible with this 3Gi system  
Please contact 3G for other options and custom configurations

## CM - CAMERA



Machined aluminum faceplate and adapting hardware by 3G  
Faceplate powder coated to match housing finish  
5.85" x 6.00" long section  
Camera by others



## CMA

### AXIS - M3086-V DOME CAMERA

175° rotation, 80° tilt and 175° pan  
Resolution: up to 2688 x 1512 pixels

[SPEC SHEET](#)

## CMH

### HONEYWELL - H3D2F1X

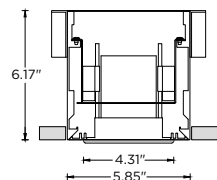
360° rotation, 180° tilt and 360° pan  
Resolution: up to 1920 x 1080 pixels

[SPEC SHEET](#)

## SP - SPEAKER



Machined aluminum faceplate and adapting hardware by 3G  
Faceplate powder coated to match housing finish  
5.85" x 6.00" long section  
Speaker by others



## SPO

### ORIGIN ACOUSTICS D39

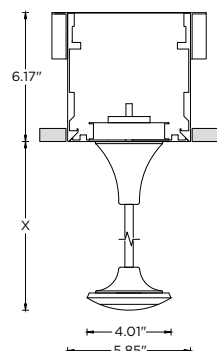
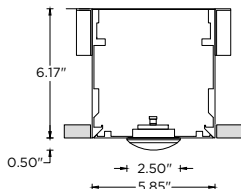
100W Peak, 100Hz - 20kHz  
Sensitivity: 84 dB

[SPEC SHEET](#)

## MC - MICROPHONE (BY OTHERS)



Machined aluminum faceplate and adapting hardware by 3G  
Faceplate powder coated to match housing finish  
5.85" x 6.00" long section  
Microphone by others



## MCA

### AUDIX - M70

[SPEC SHEET](#)

## MCL

### LOGITECH - RALLY MIC POD

[SPEC SHEET](#)

## NOTES:

All integrated component photos may vary from items shown on this specification sheet  
Manufacturers or models not shown may be compatible with this 3Gi system  
Please contact 3G for other options and custom configurations

## LINEAR HVAC DIFFUSER INTEGRATION (ALL COMPONENTS SUPPLIED BY OTHERS)

Machined aluminum faceplate provided by 3G with cut-out opening suitable for various HVAC models  
Typical diffuser integration shown. Various models compatible with Krueger, Nailor, Price, Titus and Tuttle & Bailey  
All components including plenum inlet and diffuser by others  
Available in 2', 3', 4, and 5' lengths as standard  
Please contact 3G for other options, custom lengths or custom configurations

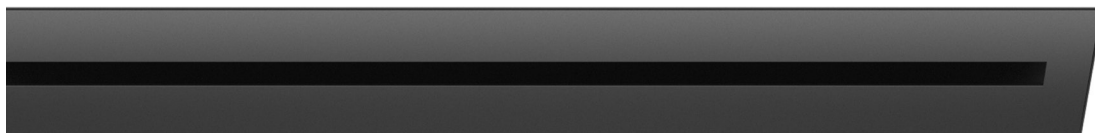
### 2 SLOT DIFFUSER



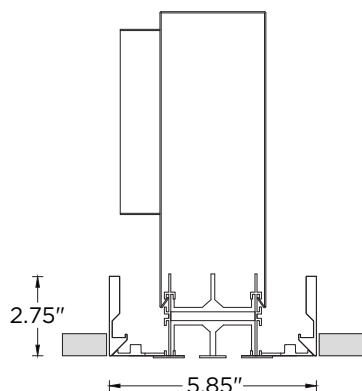
### 1 SLOT DIFFUSER



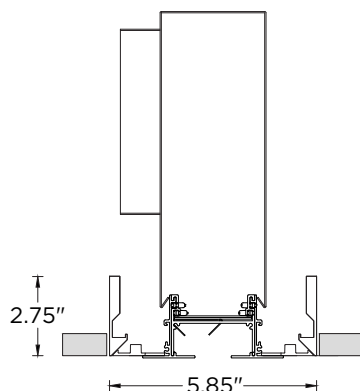
### TRIMLESS SLOT DIFFUSER



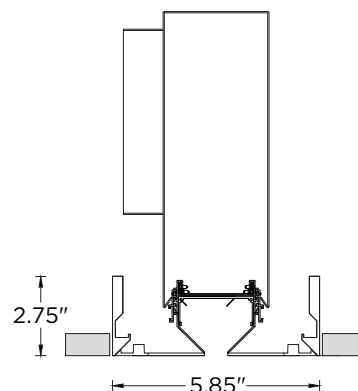
### 2 SLOT DIFFUSER\*



### 1 SLOT DIFFUSER\*

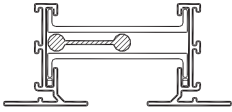
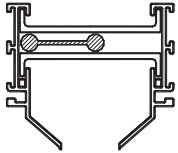


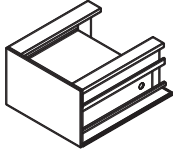
### TRIMLESS SLOT DIFFUSER\*



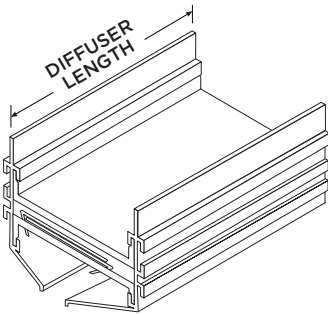
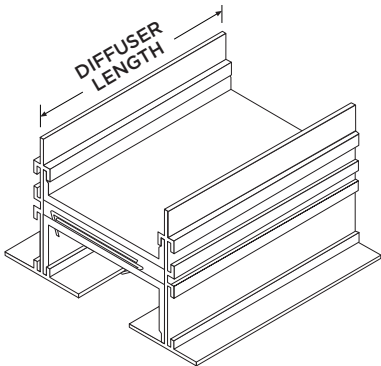
\*plenum inlet and diffuser supplied and installed by others  
see standard models and compatibility list on following pages

TITUS DIFFUSER MODEL SELECTION  
(ALL COMPONENTS SUPPLIED BY OTHERS)

|  | DIFFUSER MODEL | BORDER TYPE | END CONDITION |
|-----------------------------------------------------------------------------------|----------------|-------------|---------------|
|                                                                                   | FL10           | 66          | ECXX          |
|                                                                                   | FL15           | 66          | ECXX          |
|  | DIFFUSER MODEL | BORDER TYPE | END CONDITION |
|                                                                                   | FL10           | 55          | ECXX          |
|                                                                                   | FL15           | 55          | ECXX          |
|                                                                                   | FL20           | 55          | ECXX          |

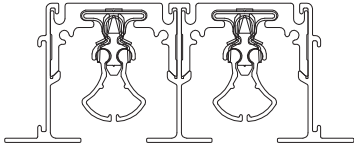
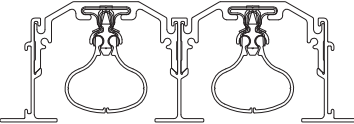
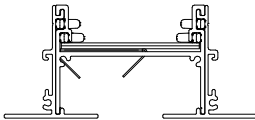
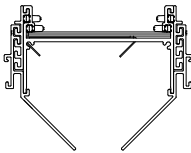
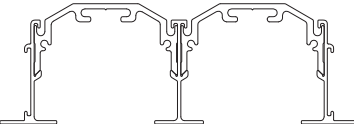
| END CONDITION |                                                                                     |
|---------------|-------------------------------------------------------------------------------------|
| ECXX          |  |

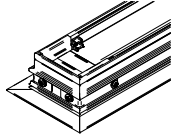
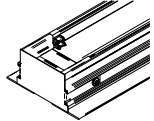
**NOTE:** DIFFUSER LENGTH MUST BE 1.50" SHORTER THAN NOMINAL LENGTH

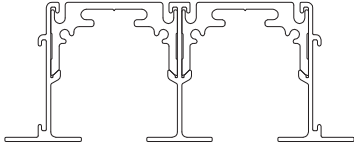


| NOMINAL HVAC LENGTH | DIFFUSER LENGTH  |
|---------------------|------------------|
| 24"                 | 22.5" <b>MAX</b> |
| 36"                 | 34.5" <b>MAX</b> |
| 48"                 | 46.5" <b>MAX</b> |
| 60"                 | 58.5" <b>MAX</b> |

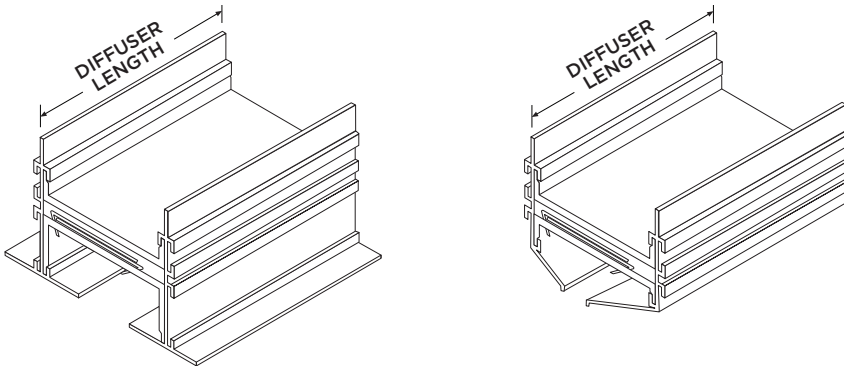
**PRICE DIFFUSER MODEL SELECTION**  
(ALL COMPONENTS SUPPLIED BY OTHERS)

|    | DIFFUSER MODEL | BORDER TYPE | END CONDITION |
|-------------------------------------------------------------------------------------|----------------|-------------|---------------|
|                                                                                     | SDS50/1        | 9A          | X-X           |
|                                                                                     | SDS50/1        | 14          | Z-Z           |
|                                                                                     | SDS50/1        | 916         | Z-Z           |
|                                                                                     | SDS75/1        | 9A          | X-X           |
|                                                                                     | SDS75/1        | 14          | Z-Z           |
|                                                                                     | SDS75/1        | 916         | Z-Z           |
|                                                                                     | SDS100/1       | 9A          | X-X           |
|                                                                                     | SDS100/1       | 14          | Z-Z           |
|                                                                                     | SDS100/1       | 916         | Z-Z           |
|                                                                                     | SDS50/2        | 9A          | X-X           |
|                                                                                     | SDS50/2        | 14          | Z-Z           |
|                                                                                     | SDS50/2        | 916         | Z-Z           |
|                                                                                     | SDS75/2        | 9A          | X-X           |
|                                                                                     | SDS75/2        | 14          | Z-Z           |
|                                                                                     | SDS75/2        | 916         | Z-Z           |
|                                                                                     | SDS100/2       | 9A          | X-X           |
|                                                                                     | SDS100/2       | 14          | Z-Z           |
|                                                                                     | SDS100/2       | 916         | Z-Z           |
|  | DIFFUSER MODEL | BORDER TYPE | END CONDITION |
|                                                                                     | SDS150         | 9A          | X-X           |
|                                                                                     | SDS150         | 14          | Z-Z           |
|                                                                                     | SDS150         | 916         | Z-Z           |
|  | DIFFUSER MODEL | BORDER TYPE | END CONDITION |
|                                                                                     | CF-1x1.0"SLOT  | EF          | X-X           |
|                                                                                     | CF-1x1.5"SLOT  | EF          | X-X           |
|                                                                                     |                |             |               |
|  | DIFFUSER MODEL | BORDER TYPE | END CONDITION |
|                                                                                     | CF-1.0"SLOT    | VF          | X-X           |
|                                                                                     | CF-1.5"SLOT    | VF          | X-X           |
|                                                                                     |                |             |               |
|  | DIFFUSER MODEL | BORDER TYPE | END CONDITION |
|                                                                                     | SDR150         | 9A          | X-X           |
|                                                                                     | SDR150         | 14          | Z-Z           |
|                                                                                     | SDR150         | 916         | Z-Z           |

| END CONDITION |                                                                                     |
|---------------|-------------------------------------------------------------------------------------|
| X-X           |  |
| Z-Z           |  |

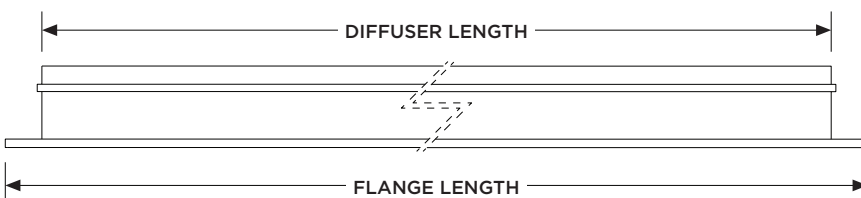
|  | DIFFUSER MODEL | BORDER TYPE | END CONDITION |
|-----------------------------------------------------------------------------------|----------------|-------------|---------------|
|                                                                                   | SDR50/1        | 9A          | X-X           |
|                                                                                   | SDR50/1        | 14          | Z-Z           |
|                                                                                   | SDR50/1        | 916         | Z-Z           |
|                                                                                   | SDR75/1        | 9A          | X-X           |
|                                                                                   | SDR75/1        | 14          | Z-Z           |
|                                                                                   | SDR75/1        | 916         | Z-Z           |
|                                                                                   | SDR100/1       | 9A          | X-X           |
|                                                                                   | SDR100/1       | 14          | Z-Z           |
|                                                                                   | SDR100/1       | 916         | Z-Z           |
|                                                                                   | SDR50/2        | 9A          | X-X           |
|                                                                                   | SDR50/2        | 14          | Z-Z           |
|                                                                                   | SDR50/2        | 916         | Z-Z           |
|                                                                                   | SDR75/2        | 9A          | X-X           |
|                                                                                   | SDR75/2        | 14          | Z-Z           |
|                                                                                   | SDR75/2        | 916         | Z-Z           |
|                                                                                   | SDR100/2       | 9A          | X-X           |
|                                                                                   | SDR100/2       | 14          | Z-Z           |
|                                                                                   | SDR100/2       | 916         | Z-Z           |

**NOTE:** DIFFUSER LENGTH MUST BE 1.50" SHORTER THAN NOMINAL LENGTH



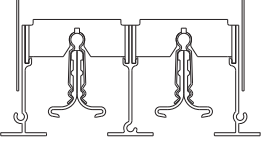
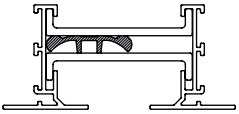
| NOMINAL HVAC LENGTH | DIFFUSER LENGTH  |
|---------------------|------------------|
| 24"                 | 22.5" <b>MAX</b> |
| 36"                 | 34.5" <b>MAX</b> |
| 48"                 | 46.5" <b>MAX</b> |
| 60"                 | 58.5" <b>MAX</b> |

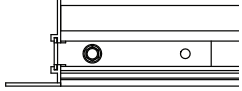
**NOTE:** FLANGE LENGTH CANNOT EXCEED NOMINAL LENGTH



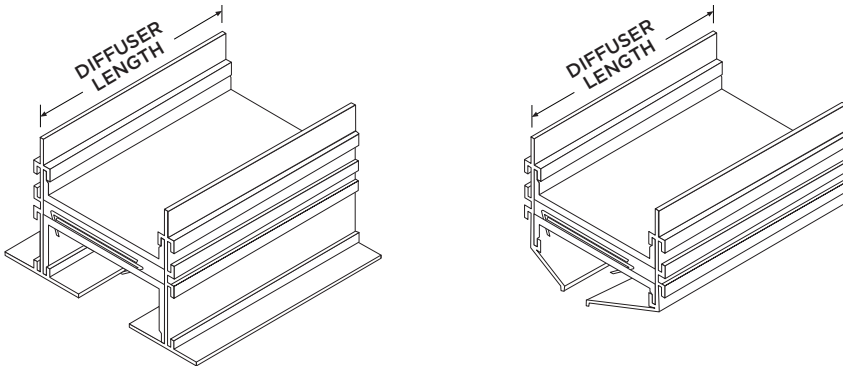
| NOMINAL HVAC LENGTH | FLANGE LENGTH  |
|---------------------|----------------|
| 24"                 | 24" <b>MAX</b> |
| 36"                 | 36" <b>MAX</b> |
| 48"                 | 48" <b>MAX</b> |
| 60"                 | 60" <b>MAX</b> |

**KREUGER DIFFUSER MODEL SELECTION**  
(ALL COMPONENTS SUPPLIED BY OTHERS)

|  | DIFFUSER MODEL | BORDER TYPE | END CONDITION |
|-----------------------------------------------------------------------------------|----------------|-------------|---------------|
|                                                                                   | 1950/1         | A           | E             |
|                                                                                   | 1950/2         | A           | E             |
|                                                                                   | 1975/1         | A           | E             |
|                                                                                   | 1975/2         | A           | E             |
|                                                                                   | 1910/1         | A           | E             |
|                                                                                   | 1910/2         | A           | E             |
|                                                                                   | 1915/1         | A           | E             |
|                                                                                   | 1920/1         | A           | E             |
|  | DIFFUSER MODEL | BORDER TYPE | END CONDITION |
|                                                                                   | DFL/1          | FF          | E             |
|                                                                                   | DFL/1.5        | FF          | E             |
|                                                                                   |                |             |               |

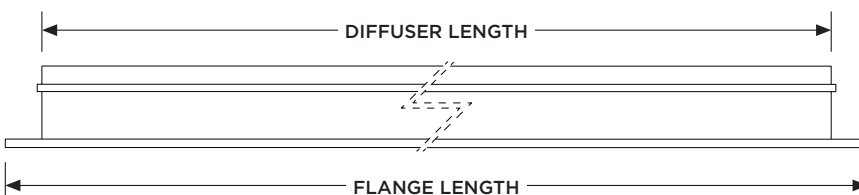
| END CONDITION |                                                                                     |
|---------------|-------------------------------------------------------------------------------------|
| E             |  |

**NOTE:** DIFFUSER LENGTH MUST BE 1.50" SHORTER THAN NOMINAL LENGTH



| NOMINAL HVAC LENGTH | DIFFUSER LENGTH  |
|---------------------|------------------|
| 24"                 | 22.5" <b>MAX</b> |
| 36"                 | 34.5" <b>MAX</b> |
| 48"                 | 46.5" <b>MAX</b> |
| 60"                 | 58.5" <b>MAX</b> |

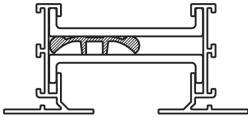
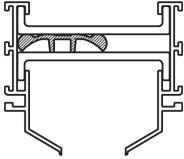
**NOTE:** FLANGE LENGTH CANNOT EXCEED NOMINAL LENGTH

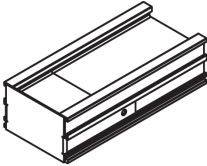


| NOMINAL HVAC LENGTH | FLANGE LENGTH  |
|---------------------|----------------|
| 24"                 | 24" <b>MAX</b> |
| 36"                 | 36" <b>MAX</b> |
| 48"                 | 48" <b>MAX</b> |
| 60"                 | 60" <b>MAX</b> |

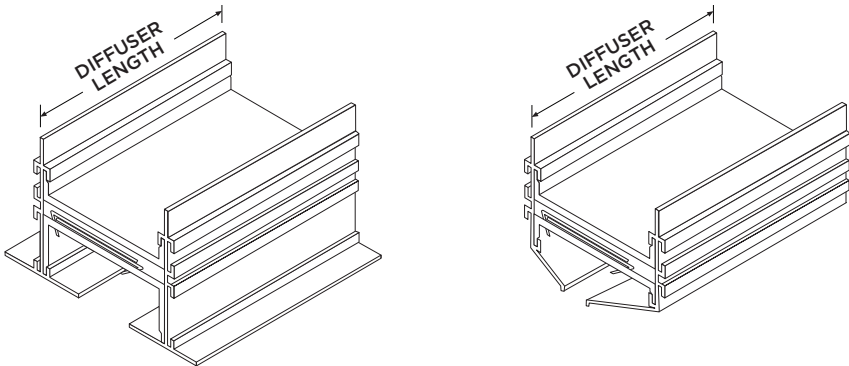


TUTTLE & BAILEY DIFFUSER MODEL SELECTION  
(ALL COMPONENTS SUPPLIED BY OTHERS)

|  | DIFFUSER MODEL | BORDER TYPE | END CONDITION |
|-----------------------------------------------------------------------------------|----------------|-------------|---------------|
|                                                                                   | AIR-TRAC/1     | B           | FEC P         |
|                                                                                   | AIR-TRAC/1.5   | B           | FEC P         |
|  | DIFFUSER MODEL | BORDER TYPE | END CONDITION |
|                                                                                   | AIR-TRAC/1     | N           | FEC P         |
|                                                                                   | AIR-TRAC/1.5   | N           | FEC P         |
|                                                                                   | AIR-TRAC/2     | N           | FEC P         |

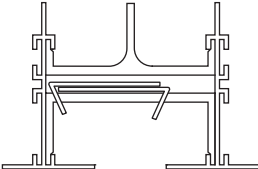
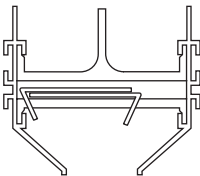
| END CONDITION |                                                                                     |
|---------------|-------------------------------------------------------------------------------------|
| FEC P         |  |

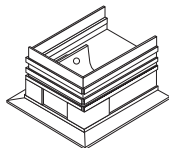
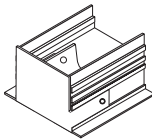
**NOTE:** DIFFUSER LENGTH MUST BE 1.50" SHORTER THAN NOMINAL LENGTH



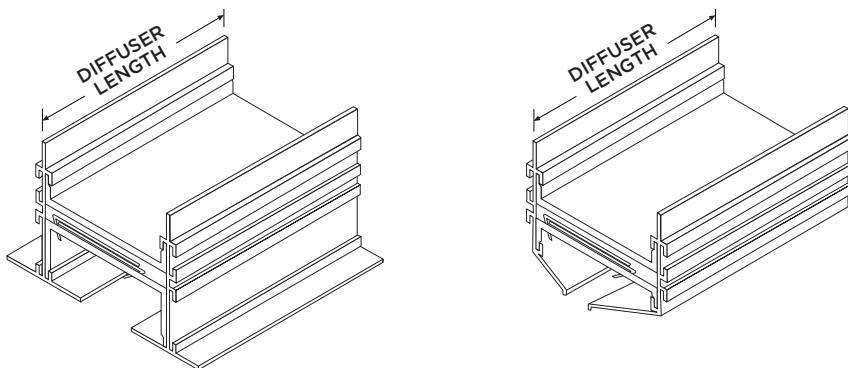
| NOMINAL HVAC LENGTH | DIFFUSER LENGTH |
|---------------------|-----------------|
| 24"                 | 22.5" MAX       |
| 36"                 | 34.5" MAX       |
| 48"                 | 46.5" MAX       |
| 60"                 | 58.5" MAX       |

**NAILOR DIFFUSER MODEL SELECTION**  
(ALL COMPONENTS SUPPLIED BY OTHERS)

|  | DIFFUSER MODEL | BORDER TYPE | END CONDITION |
|-----------------------------------------------------------------------------------|----------------|-------------|---------------|
|                                                                                   | FLH10/1        | AA          | MM            |
|                                                                                   | FLH15/1        | AA          | MM            |
|                                                                                   | FLR10/1        | AA          | MM            |
|                                                                                   | FLR15/1        | AA          | MM            |
|                                                                                   | FLV10/1        | AA          | MM            |
|  | DIFFUSER MODEL | BORDER TYPE | END CONDITION |
|                                                                                   | FLH10/1        | KK          | CC            |
|                                                                                   | FLH15/1        | KK          | CC            |
|                                                                                   | FLH20/1        | KK          | CC            |
|                                                                                   | FLV10/1        | KK          | CC            |
|                                                                                   | FLV20/1        | KK          | CC            |

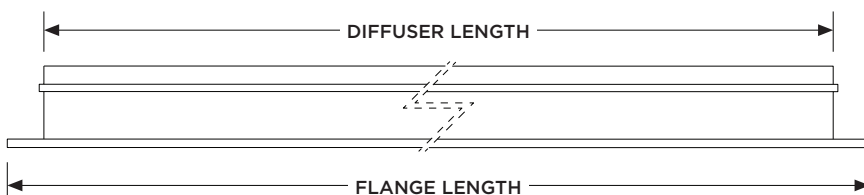
| END CONDITION |                                                                                     |
|---------------|-------------------------------------------------------------------------------------|
| MM            |  |
| CC            |  |

**NOTE:** DIFFUSER LENGTH MUST BE 1.50" SHORTER THAN NOMINAL LENGTH



| NOMINAL HVAC LENGTH | DIFFUSER LENGTH  |
|---------------------|------------------|
| 24"                 | 22.5" <b>MAX</b> |
| 36"                 | 34.5" <b>MAX</b> |
| 48"                 | 46.5" <b>MAX</b> |
| 60"                 | 58.5" <b>MAX</b> |

**NOTE:** FLANGE LENGTH CANNOT EXCEED NOMINAL LENGTH

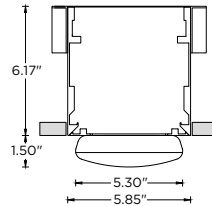
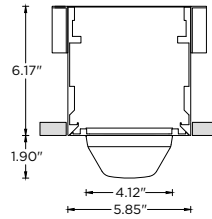


| NOMINAL HVAC LENGTH | FLANGE LENGTH  |
|---------------------|----------------|
| 24"                 | 24" <b>MAX</b> |
| 36"                 | 36" <b>MAX</b> |
| 48"                 | 48" <b>MAX</b> |
| 60"                 | 60" <b>MAX</b> |

**SD - SMOKE DETECTOR**



Machined aluminum faceplate and adapting hardware by 3G  
Faceplate powder coated to match housing finish  
5.85" x 6.00" long section  
Smoke detector by others



**SDE EDWARDS - SIGA-PCD**

Smoke + carbon monoxide detection  
Wired

[SPEC SHEET](#)

**SDG GOOGLE NEST PROTECT AND CO ALARM**

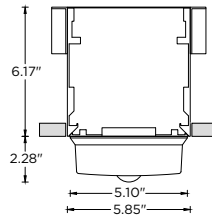
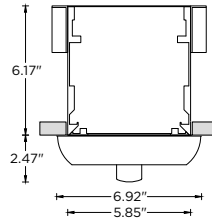
Smoke + carbon monoxide detection  
Wired

[SPEC SHEET](#)

**ST - FIRE STROBE**



Machined aluminum faceplate and adapting hardware by 3G  
Faceplate powder coated to match housing finish  
5.85" x 6.00" long section  
Fire strobe by others



**STS SYSTEM SENSOR - L-SERIES - PC2WL**

Strobe Horn  
Wired, mounts to a junction box

[SPEC SHEET](#)

**STK KIDDE P4010ACLEDSCOCA**  
Fire Strobe + Smoke + carbon monoxide detection  
Wired, mounts to a junction box

[SPEC SHEET](#)

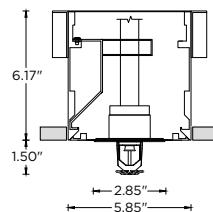
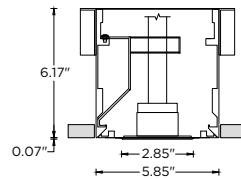
**FS - FIRE SPRINKLER CONCEALED**



**FS - FIRE SPRINKLER EXPOSED**



Machined aluminum faceplate and adapting hardware by 3G  
Faceplate powder coated to match housing finish  
5.85" x 6.00" long section  
Fire sprinkler by others



**FSV VIKING VK462**  
Standard and concealed

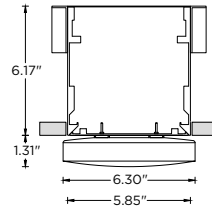
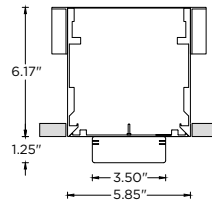
[SPEC SHEET](#)

NOTES:  
All integrated component photos may vary from items shown on this specification sheet  
Manufacturers or models not shown may be compatible with this 3Gi system  
Please contact 3G for other options and custom configurations

**WF - WIFI ACCESS POINT**



Machined aluminum faceplate and adapting hardware by 3G  
Faceplate powder coated to match housing finish  
5.85" x 6.00" long section  
Wifi access point by others



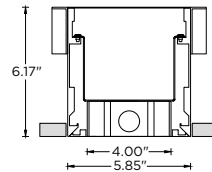
**WFC**  
**CISCO 145AC**  
2.4GHz & 5GHz  
Up to 867 Mbps  
[SPEC SHEET](#)

**WFE**  
**ENGENIUS - EWS357AP**  
2.4 GHz & 5GHz  
Up to 1200 Mbps  
[SPEC SHEET](#)

**JB - JUNCTION BOX**



Machined aluminum faceplate and adapting hardware by 3G  
Faceplate powder coated to match housing finish  
5.85" x 6.00" long section  
Junction box by others



**JBO**  
**Standard octagonal J-box**  
4.00" diam x 1.50" deep  
[SPEC SHEET](#)

NOTES:  
All integrated component photos may vary from items shown on this specification sheet  
Manufacturers or models not shown may be compatible with this 3Gi system  
Please contact 3G for other options and custom configurations