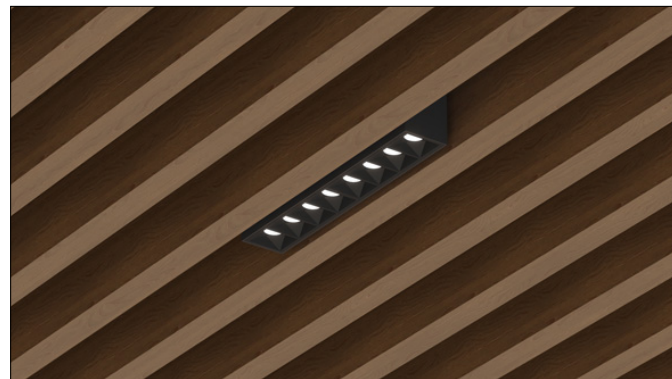




## 3G-RMZ8-SC

8" ZOIE DOWNLIGHT  
SPECIALTY CEILINGS

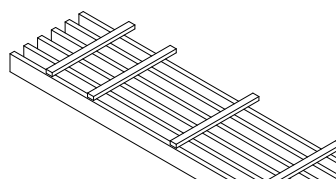
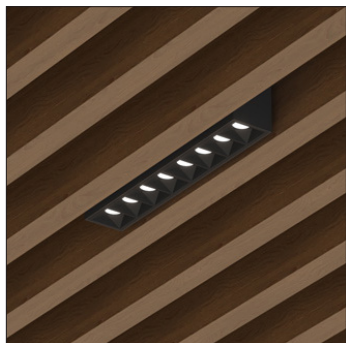
8" linear downlight designed for integration with specialty ceilings  
Regressed LED source with enhanced glare control and UGR <16  
Standard 90+ CRI LED system with performance up to 134 LPW  
Delivered lumen range up to 2000lm at 90+ CRI  
15° to 55° beam angle options suitable for various applications  
Matte black and matte white multi faceted louvers  
Companion to 3G's Zoie product family



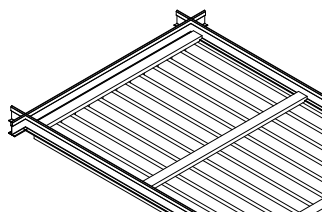
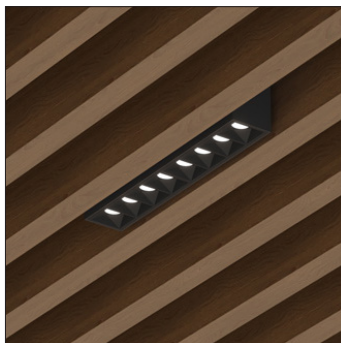
Compatible with various architectural ceiling systems

### CEILING TYPES

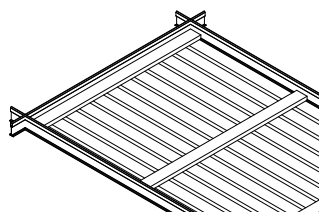
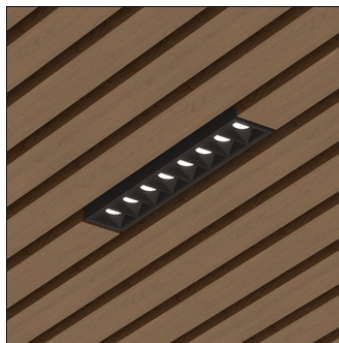
#### GRILLE



#### GRILLE TEGULAR

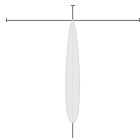


#### LINEAR TEGULAR

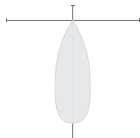


### OPTICS

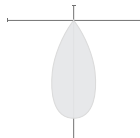
15D



35D



55D



### PERFORMANCE

| LUMEN OUTPUT | DELIVERED LUMENS | SYSTEM WATTS | EFFICACY (LPW) |
|--------------|------------------|--------------|----------------|
| 1000         | 1000             | 8.0          | 125            |
| 1500         | 1500             | 13.7         | 109            |
| 2000         | 2026             | 18.9         | 107            |

BASED ON 90+ CRI, 3500K AND 35D OPTIC  
Lumen output and actual wattage may vary +/- 5%

### STANDARD FINISHES



BLACK COLLAR FINISH

BLACK LOUVER FINISH

|                  |  |  |  |              |  |             |  |
|------------------|--|--|--|--------------|--|-------------|--|
| <b>PROJECT:</b>  |  |  |  | <b>TYPE:</b> |  |             |  |
| <b>CATALOG#:</b> |  |  |  | <b>DATE:</b> |  | <b>QTY:</b> |  |

| CAT. NO           | LUMEN OUTPUT   | CRI                  | COLOR TEMP   | BEAM ANGLE   | VOLTAGE                                    |
|-------------------|--|----------------------|--|--|--|
| <b>3G-RMZ8-SC</b> | <b>10</b> - 1000 LUMENS<br><b>15</b> - 1500 LUMENS<br><b>20</b> - 2000 LUMENS<br><br><small>*All lumen outputs are delivered lumens at 90+ CRI</small> | <b>H90</b> - 90+ CRI | <b>27K</b> - 2700K<br><b>30K</b> - 3000K<br><b>35K</b> - 3500K<br><b>40K</b> - 4000K | <b>15D</b> - 15°<br><b>35D</b> - 35°<br><b>55D</b> - 55° | <b>UNV</b> - 120/277V<br><b>120</b> - 120V |

| DRIVER  | COLLAR FINISH                          | LOUVER FINISH                            | HOUSING TYPE  |
|---|--|--|---|
| <b>DIM</b> - 0-10V (100-1%)<br><b>LE</b> - PHASE DIM (TRIAC/ELV, 100-1%) <sup>1</sup><br><b>DO1</b> - 0-10V (100-0.1%)<br><b>DALI</b> - DALI (100-1%) <sup>2</sup><br><b>DHL2</b> - LUTRON LDE1 (1% ECOSYSTEM)<br><b>DMX</b> - DMX (100-0%) | <b>BK</b> - BLACK<br><b>WH</b> - WHITE | <b>BLV</b> - BLACK<br><b>WLV</b> - WHITE | <b>NC</b> - NEW CONSTRUCTION HOUSING <sup>3</sup><br><b>SH</b> - SHALLOW HOUSING <sup>4</sup> |

| CEILING TYPE   | OPTIONS                                 |
|--|---|
| <b>GR</b> - GRILLE<br><b>GTG</b> - GRILLE TEGULAR<br><b>LTG</b> - LINEAR TEGULAR | <b>CP</b> - CHICAGO PLENUM <sup>5</sup> |

- <sup>1</sup> Phase dimming options available in 120V only  
<sup>2</sup> DALI-2 (Type 6) provided as standard. Please consult factory for DALI (Type 8) options  
<sup>3</sup> New Construction Housing (NC) not available with Linear Tegular (LTG) ceiling types  
<sup>4</sup> Shallow Housing (SH) not available with Grille (GR) and Grille Tegular (GTG) ceiling types  
<sup>5</sup> Chicago Plenum option available with Shallow Housing (SH) and Linear Tegular (LTG) ceiling

## PERFORMANCE

| LUMEN OUTPUT | DELIVERED LUMENS | SYSTEM WATTS | EFFICACY (LPW) |
|--------------|------------------|--------------|----------------|
| 1000         | 1000             | 8.0          | 125            |
| 1500         | 1500             | 13.7         | 109            |
| 2000         | 2026             | 18.9         | 107            |

BASED ON 90+ CRI, 3500K AND 35D OPTIC  
Lumen output and actual wattage may vary +/- 5%

## MULTIPLIERS

| BEAM ANGLE |      |
|------------|------|
| 15D        | 0.94 |
| 35D        | 1.00 |
| 55D        | 0.80 |

| COLOR TEMP |      |
|------------|------|
| 2700K      | 0.94 |
| 3000K      | 0.97 |
| 3500K      | 1.00 |
| 4000K      | 1.07 |

## HOUSING

New construction and shallow housing options available  
New construction housing features an adjustable fixture collar with sliding mechanism for in field adjustment. Maximum 5 1/4" wood slat height  
Housings rated for #12 AWG (4 in, 4 out), 90°C conductors and through branch wiring

## OPTICS

Proprietary multi-faceted reflectors with UGR <16  
Beam angles available in 15°, 35°, and 55°  
1.14" apertures with enhanced glare control  
Matte black or matte white faceted louver finish

## LED SYSTEM

Standard 90+ CRI, <2 SDCM  
Available in 27K, 30K, 35K, and 40K  
L90 > 60,000 hours

## ELECTRICAL

Standard 0-10V, constant current drivers  
100-1% dimming range and >0.9 power factor  
Integral drivers are located within fixture housing  
Accessible from above ceiling only with new construction housing option  
Accessible through fixture aperture with shallow housing option

## MOUNTING

All housings ship with adjustable C-Channel bar hangers  
Designed for integration with wood slat ceiling systems (see drawings)  
Adjustable fixture collar in new construction housing for in field adjustment  
Infill panel accessory available with ceiling manufacturer (supplied by others)

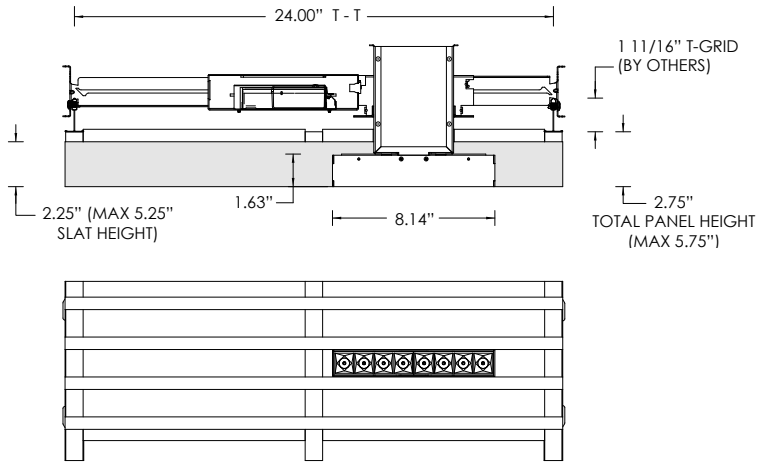
## LISTING

ETL listed and conforms to UL1598 standard  
Certified to CSA22.2 NO.250.0.  
Rated for dry or damp locations

## WARRANTY

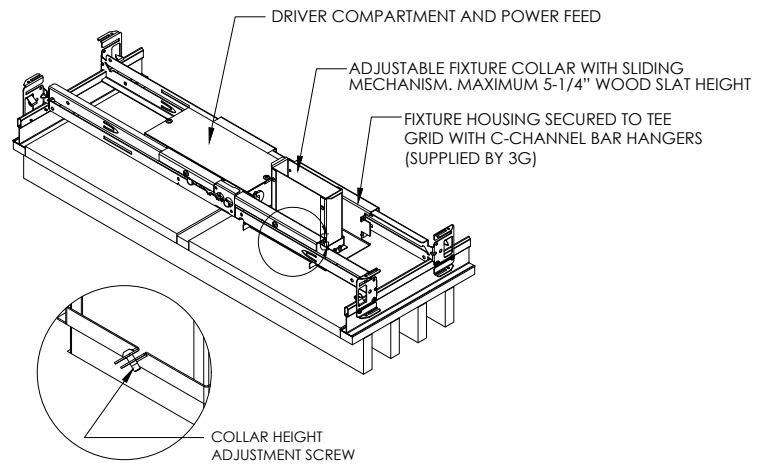
5 year limited warranty  
LED system rated for operation in ambient environments up to 25°C

**GR - GRILLE (CEILING SYSTEM BY OTHERS)**



| COMPATIBLE CEILING SYSTEMS |  |
|----------------------------|--|
| MANUFACTURER               | COMPATIBLE PART NUMBER   |
| ARMSTRONG                  | 6323L_S03 (04, 06, 07, 08, 10, 11, 12, 13),<br>6324L_S02 (03, 04, 06, 07, 08, 10, 11)<br>6325L_S02 (06), 6333L_S14 (15, 16, 17),<br>6334L_S14 (15, 16, 17), 6335L_S14 (15, 16, 17),<br>7091, 7092, 7093, 7094, 7095, 7096, 7097,<br>7098, 7099, 7265 |
|                            | 9WOOD  |
| 2116-2                     |  |

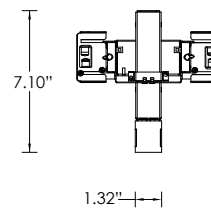
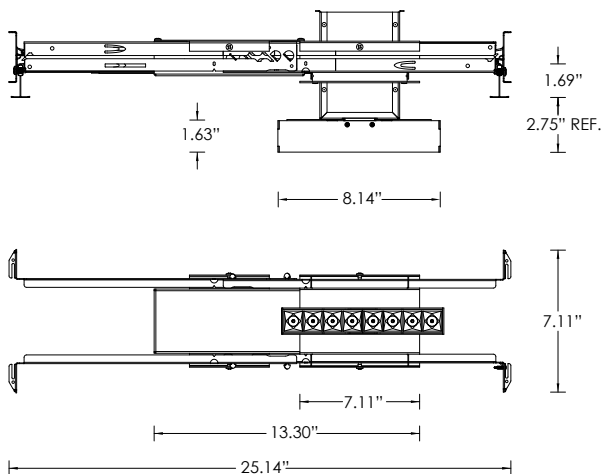
**NC - NEW CONSTRUCTION HOUSING**



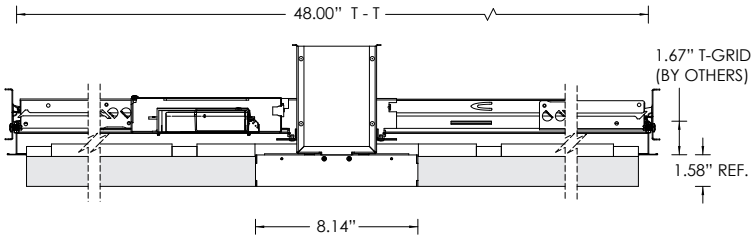
**PLEASE NOTE:** FIXTURE INSTALLATION MUST BE COORDINATED WITH CEILING PANEL INSTALLATION TO ENSURE FIXTURE ACCESSIBILITY CEILING SYSTEM AND 5/8" THICK INFILL PANEL (BY OTHERS)

**HOUSING TYPES**

**NC - NEW CONSTRUCTION HOUSING**

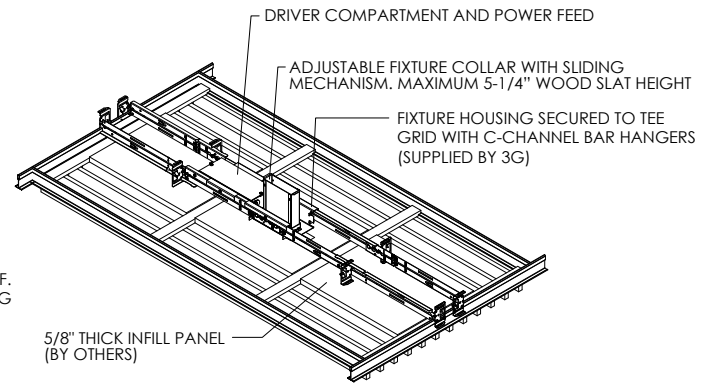


**GTG - GRILLE TEGULAR (CEILING SYSTEM BY OTHERS)**



| COMPATIBLE CEILING SYSTEMS |                        |
|----------------------------|------------------------|
| MANUFACTURER               | COMPATIBLE PART NUMBER |
| ARMSTRONG                  | 6723F51L4T5            |
| 9WOOD                      | 2116-2                 |

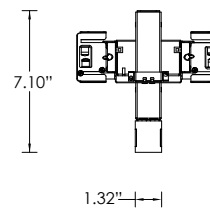
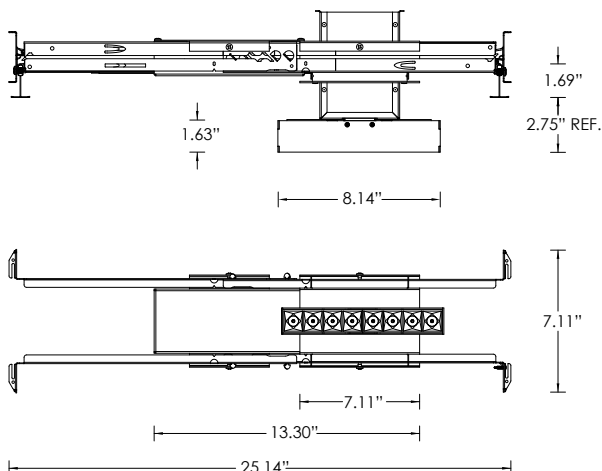
**NC - NEW CONSTRUCTION HOUSING**



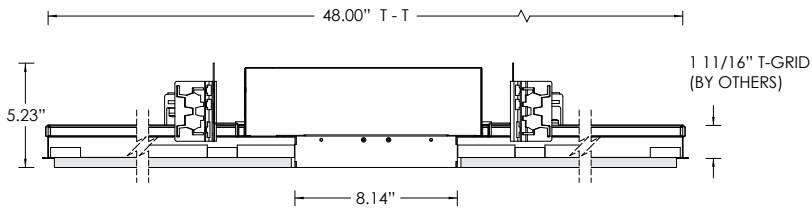
**PLEASE NOTE:** FIXTURE INSTALLATION MUST BE COORDINATED WITH CEILING PANEL INSTALLATION TO ENSURE FIXTURE ACCESSIBILITY CEILING SYSTEM AND 5/8" THICK INFILL PANEL (BY OTHERS)

**HOUSING TYPES**

**NC - NEW CONSTRUCTION HOUSING**

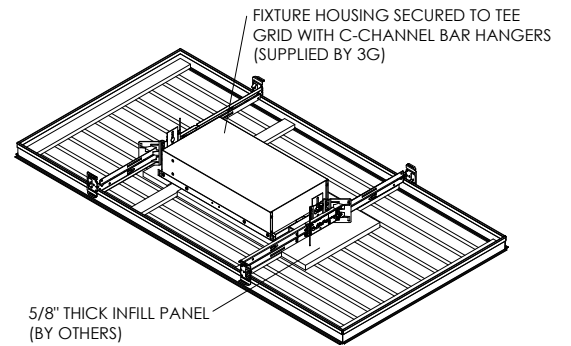


**LTG - LINEAR TEGULAR (CEILING SYSTEM BY OTHERS)**



| COMPATIBLE CEILING SYSTEMS |                          |
|----------------------------|--------------------------|
| MANUFACTURER               | COMPATIBLE PART NUMBER   |
| ARMSTRONG                  | 6733F51L4T9, 6733F51L4T5 |
| 9WOOD                      | 2116-2                   |

**SH - SHALLOW HOUSING**



**PLEASE NOTE:** FIXTURE INSTALLATION MUST BE COORDINATED WITH CEILING PANEL INSTALLATION TO ENSURE FIXTURE ACCESSIBILITY CEILING SYSTEM AND 5/8" THICK INFILL PANEL (BY OTHERS)

**HOUSING TYPES**

**SH - SHALLOW HOUSING**

