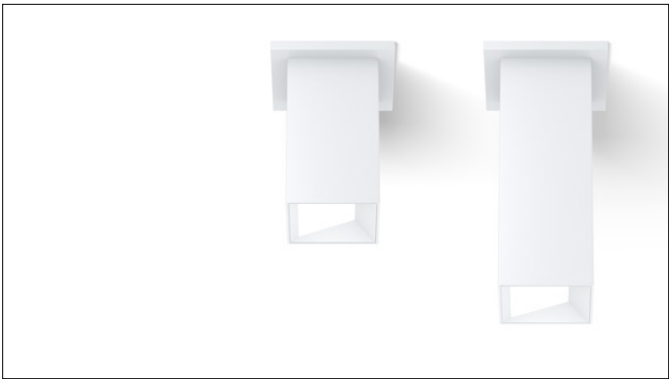


3G LIGHTING

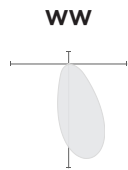
3G-SDL33SWW

3" WALL WASH CYLINDER
7" AND 11" HEIGHT

3" diameter, high performance wall wash cylinder
Standard 95+ CRI LED system with performance up to 94 LPW
Delivered lumen range up to 1428lm at 95+ CRI
Regressed LED source with enhanced glare control
Proprietary wall wash optic and lens
Extruded aluminum construction with no visible hardware
Companion to 3G's DL33R series downlight family



OPTICS

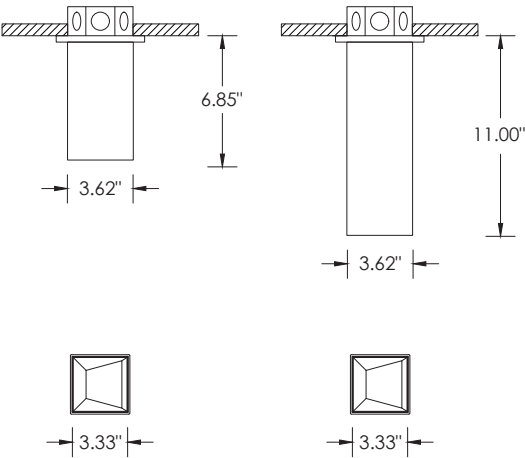


PERFORMANCE

LUMEN OUTPUT	DELIVERED LUMENS	SYSTEM WATTS	EFFICACY (LPW)
1000	1040	11.3	92
1250	1250	14.0	90
1400	1400	15.6	90

BASED ON 95+ CRI, 3500K, WITH WALL WASH OPTIC
Lumen output and actual wattage may vary +/- 5%

DIMENSIONS



PROJECT:		TYPE:	
CATALOG#:		DATE:	QTY:

CAT. NO	FIXTURE HEIGHT	LUMEN OUTPUT	CRI	COLOR TEMP	BEAM ANGLE
3G-SDL33SWW	7H - 7" HEIGHT * 11H - 11" HEIGHT *7H available up to 1000lm with integral driver (DIM & LE options)	10 - 1000 LUMENS 12 - 1250 LUMENS 14 - 1400 LUMENS All lumen outputs are delivered lumens at 95+ CRI	H95 - 95+ CRI	27K - 2700K 30K - 3000K 35K - 3500K 40K - 4000K	WW- WALL WASH

VOLTAGE	DRIVER	HOUSING FINISH	INSERT FINISH
UNV - 120/277V 120 - 120V 347 - 347V ¹	DIM - 0-10V (100-1%) LE - PHASE DIM ² (TRIAC/ELV, 100-1%) D01 - 0-10V (100-0.1%) DALI - DALI (100-1%) ³ DHL2- LUTRON HI-LUME LDE ⁴ (100-1%) DMX - DMX (100-0%) ⁴ RDIM - REMOTE 0-10V (100-1%) RLE - REMOTE PHASE (TRIAC/ELV, 100-1%) Remote drivers supplied with enclosure	WH - WHITE BK - BLACK SV - SILVER CSF - CUSTOM-3G	WI - WHITE BI - BLACK SI - SILVER CI - CUSTOM-3G

¹ 347 available in "DIM" 0-10V only (100-1%). Not available with 7H model

² Phase dimming options available in 120V only

³ DALI-2 (Type 6) provided as standard

⁴ DMX and DHL2 (Lutron) not available with 7H model

PERFORMANCE

LUMEN OUTPUT	DELIVERED LUMENS	SYSTEM WATTS	EFFICACY (LPW)
1000	1040	11.3	92
1250	1250	14.0	90
1400	1400	15.6	90

BASED ON 95+ CRI, 3500K, WITH WALL WASH OPTIC
Lumen output and actual wattage may vary +/- 5%

MULTIPLIERS

COLOR TEMP	
2700K	0.98
3000K	1.00
3500K	1.00
4000K	1.02

HOUSING

Extruded aluminum housing with powder coated finish
Twist and lock construction with no visible hardware

BEVELED INSERT

Cast aluminum beveled insert with matte powder coated finish
3" aperture with regressed LED source for enhanced glare control

OPTICS

Proprietary wall wash optic
Asymmetrical lens provides uniformity and smooth illumination across and down the wall
Regressed LED source with enhanced glare control

ELECTRICAL

Standard 0-10V, constant current drivers
100-1% dimming range and >0.9 power factor
Standard 120/277V universal voltage with several driver options
120V Forward Phase/Reverse Phase driver option (100-1%)
Integral drivers are easily accessible through luminaire aperture
Remote drivers supplied with enclosure

LED SYSTEM

Standard 95+ CRI
Color consistency <2 SDCM
Available in 27K, 30K, 35K, and 40K
L90 > 50,000 hours

MOUNTING

All hardware included for mounting to 4" octagonal junction box
Conduit feed cut-out canopy option designed to mount to 4" octagonal junction box
Seamless canopy option mounts to 4" octagonal junction box (new construction only)

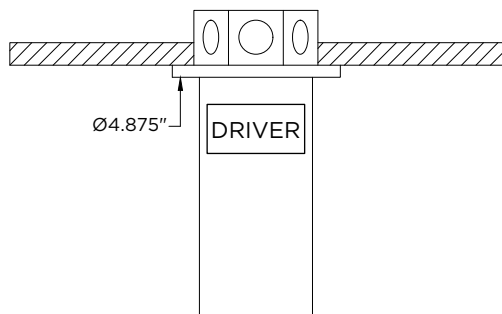
LISTING

ETL listed and conforms to UL1598 standard
Certified to CSA22.2 NO.250.0.
Rated for dry or damp locations

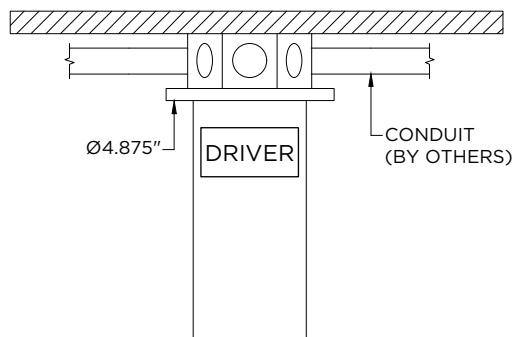
WARRANTY

5 year limited warranty
LED system rated for operation in ambient environments up to 25°C

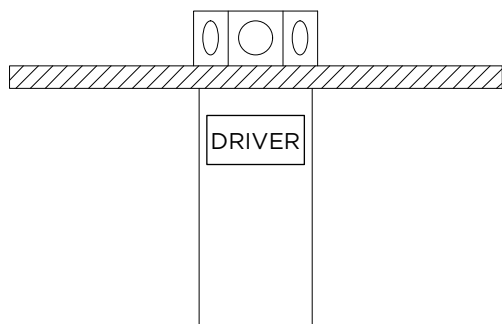
STANDARD CANOPY
RECESSED J-BOX (BY OTHERS)



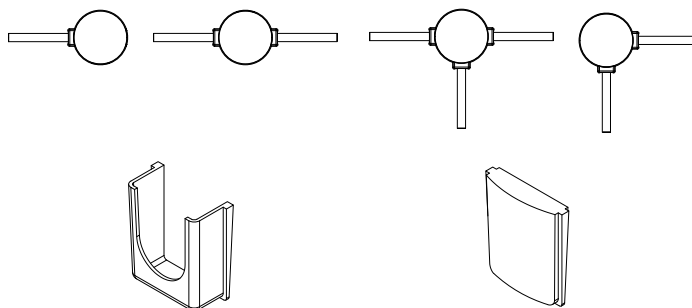
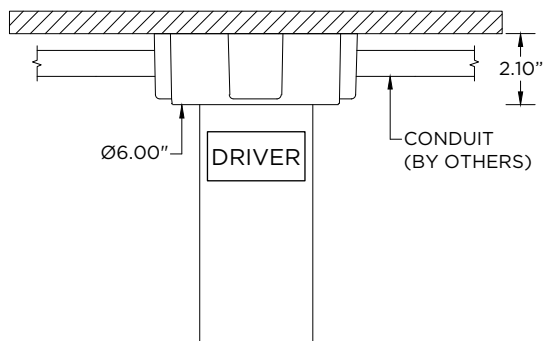
STANDARD CANOPY
SURFACE J-BOX (BY OTHERS)



FXC - SEAMLESS CANOPY
RECESSED J-BOX (BY OTHERS)



CF - CONDUIT FEED CANOPY
SURFACE MOUNT J-BOX (BY OTHERS)



CONDUIT COVER
3 PROVIDED WITH EACH
CONDUIT FEED CANOPY

BLANK
2 PROVIDED WITH EACH
CONDUIT FEED CANOPY