

3G LIGHTING

3G-DL20SF

2" SQUARE FIXED
DOWNLIGHT

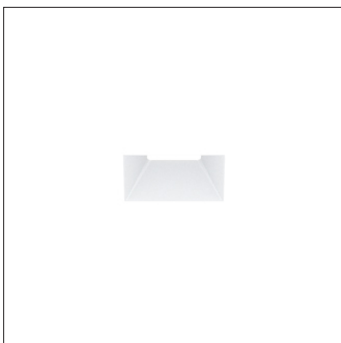
2" Square high performance fixed downlight
Standard 95+ CRI LED system with performance up to 103 LPW
Delivered lumen range up to 1650lm at 95+ CRI
Installation and fully serviceable from below ceiling plane
15° to 90° beam angle options suitable for various applications
Companion to 3G's Cylinder product family



TRIM FLANGE



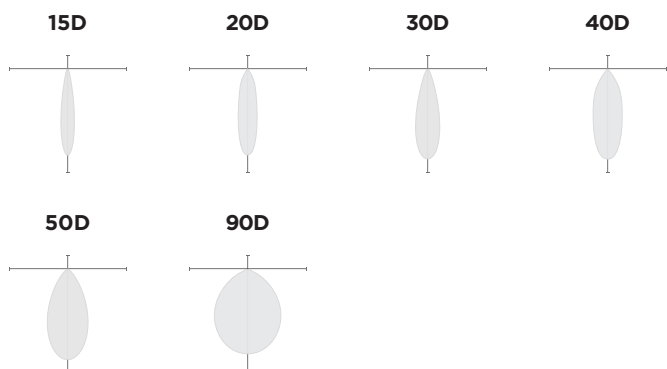
TRIMLESS



MILLWORK



OPTICS



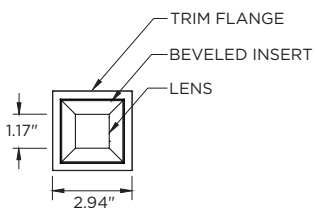
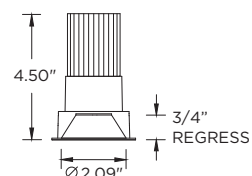
PERFORMANCE

LUMEN OUTPUT	DELIVERED LUMENS	SYSTEM WATTS	EFFICACY (LPW)
750	750	7.5	100
1000	1000	10.3	97
1250	1250	13.0	96
1450	1450	15.6	93
1650	1650	18.5	89

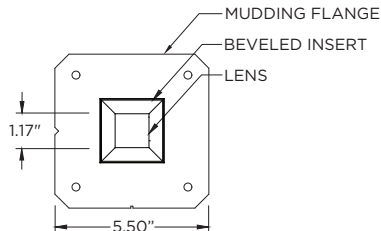
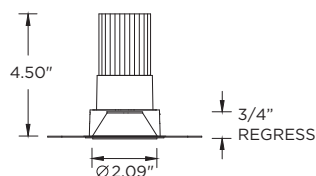
BASED ON 95+ CRI, 3500K, 30D OPTIC WITH SOFTENING LENS
Lumen output and actual wattage may vary +/- 5%

DIMENSIONS

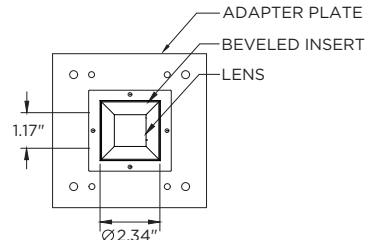
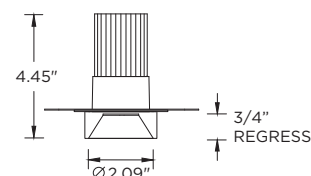
TRIM FLANGE



TRIMLESS



MILLWORK



PROJECT:		TYPE:	
CATALOG#:		DATE:	QTY:

CAT. NO	LUMEN OUTPUT	CRI	COLOR TEMP	BEAM ANGLE	VOLTAGE
3G-DL20SF	07 - 750 LUMENS 10 - 1000 LUMENS 12 - 1250 LUMENS 14 - 1450 LUMENS 16 - 1650 LUMENS <small>All lumen outputs are delivered lumens at 95+ CRI</small>	H95 - 95+ CRI	27K - 2700K 30K - 3000K 35K - 3500K 40K - 4000K	15D - 15° ¹ 20D - 20° 30D - 30° 40D - 40° 50D - 50° 90D - 90° * <small>*90D optic supplied with lens Not available with other lens options</small>	UNV - 120/277V 120 - 120V

DRIVER	TRIM FLANGE	BEVELED INSERT	HOUSING TYPE
DIM - 0-10V (100-1%) LE - PHASE DIM ^{2,3} <small>(TRIAC/ELV, 100-1%)</small> DO1 - 0-10V (100-0.1%) DALI - DALI (100-1%) ⁴ RDIM - REMOTE 0-10V (100-1%) ⁵ <small>(FOR LUTRON ATHENA RF NODE)</small> RDALI - REMOTE DALI (100-1%) ⁵ <small>(FOR LUTRON ATHENA RF NODE)</small>	WT - WHITE BT - BLACK ST - SILVER XTR - TRIMLESS <small>(MUD-IN DRYWALL)</small> MWF - FLANGELESS ⁶ MILLWORK	WI - WHITE BI - BLACK SI - SILVER	RMD - REMODEL (NON-IC) NCF - NEW CONSTRUCTION FRAME (NON-IC) NC - NEW CONSTRUCTION ⁷ HOUSING (CP RATED) IC - NEW CONSTRUCTION ⁷ IC HOUSING <small>NCF, NC and IC housings ship with nailer type bar hangers</small>

OPTIONS
AWN - LUTRON ATHENA RF NODE ⁸ SF - SOFTENING LENS (SUPPLIED STANDARD) * SB - SANDBLASTED LENS * HX - BLACK HEXCELL LOUVER * WL - WET LOCATION RATED (SUPPLIED WITH SOFTENING LENS) CP - CHICAGO PLENUM ⁹ EMR - REMOTE EMERGENCY BATTERY ¹⁰ <small>*Maximum 2 optical accessories</small>

- ¹ 15D reflector available up to 1000lm
² Phase dimming options available in 120V only
³ Phase dimming is not available in 750lm and 1000lm
⁴ DALI-2 (Type 6) provided as standard
⁵ Supplied with enclosure with Athena RF Node and driver. Installed remotely by others. Not accessible through fixture aperture
⁶ MWF not available with Remodel (NON-IC)
⁷ New Construction IC housing available up to 1450lm. IC housing option available up to 1250lm
⁸ Available with RDIM or RDALI driver options
⁹ Chicago Plenum option available with New Construction Housing
¹⁰ Supplied with enclosure with Emergency Battery and driver. Installed remotely by others. Not accessible through fixture aperture

PERFORMANCE

LUMEN OUTPUT	DELIVERED LUMENS	SYSTEM WATTS	EFFICACY (LPW)
750	750	7.5	100
1000	1000	10.3	97
1250	1250	13.0	96
1450	1450	15.6	93
1650	1650	18.5	89

BASED ON 95+ CRI, 3500K, 30D OPTIC WITH SOFTENING LENS
Lumen output and actual wattage may vary +/- 5%

HOUSING

Remodel, new construction frame, new construction and IC housing options for installation in any site condition
Maximum ceiling thickness of 1.00". Consult factory for modifications
All housing options (except millwork) designed to be easily converted in field to trim or trimless with minimal components
Housing rated for #12 AWG (4 in, 4 out), 90°C conductors and through branch wiring

BEVELED INSERT

Cast aluminum beveled insert with matte powder coated finish
2" aperture with regressed LED source for enhanced glare control

TRIM

Cast aluminum trim flange with matte powder coated finish and minimal 0.300" overlap

TRIMLESS

Mudding flange features a perforated surface for easy mud-in application
Integral blocking support provided to ensure fixture is properly secured within ceiling structure

OPTICS

High performance, TIR optic
Beam angle available in 15°, 20°, 30°, 40°, 50° and 90°
Optics are field replaceable (15° not interchangeable)
Softening lens supplied standard

LED SYSTEM

Standard 95+ CRI
Color consistency <2 SDCM
Available in 24K, 27K, 30K, 35K, and 40K
L90 > 50,000 hours

MULTIPLIERS

BEAM ANGLE	
15D	0.95
20D	1.00
30D	1.00
40D	0.97
50D	0.95
90D	0.88

COLOR TEMP	
2400K	0.91
2700K	0.95
3000K	0.97
3500K	1.00
4000K	1.03

ELECTRICAL

Standard 0-10V, constant current drivers
100-1% dimming range and >0.9 power factor
Standard 120/277V universal voltage with several driver options
120V Forward Phase/Reverse Phase driver option (100-1%)
Integral drivers are easily accessible through luminaire aperture

EMERGENCY

7W output for 90 minutes (+/- 700lm at 95+ CRI). Title 24 Certified
Remote emergency battery (not accessible through fixture aperture)
Maximum remote mounting distance: 50ft (12AWG) or 25ft (14AWG)
Caution: Emergency Battery utilizes more than one power source and servicing should be performed by qualified personnel

MOUNTING

Trim fixture designed for use in drywall, wood, acoustic, and other architectural ceilings
Trimless fixture designed for use in drywall, mud-in ceiling applications
Millwork Flangeless option for wood ceilings and acoustic
Recommended trim and mud-in trimless cut-out (2.625" x 2.625")
Recommended Millwork Flangeless cut-out (2.375" x 2.375")
All housing types except remodel ship with nailer type bar hangers (14" to 26" extension)

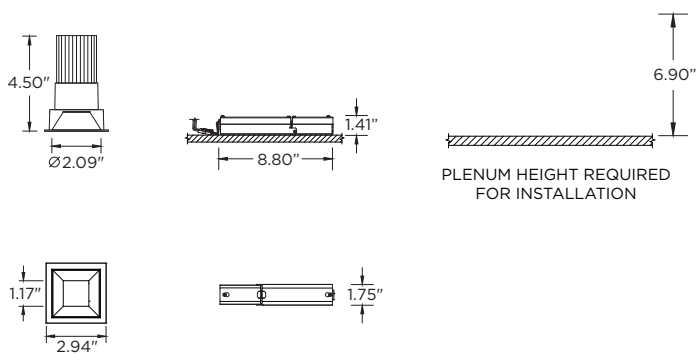
LISTING

ETL listed and conforms to UL1598 standard
Certified to CSA22.2 NO.250.0.
Rated for dry or damp locations

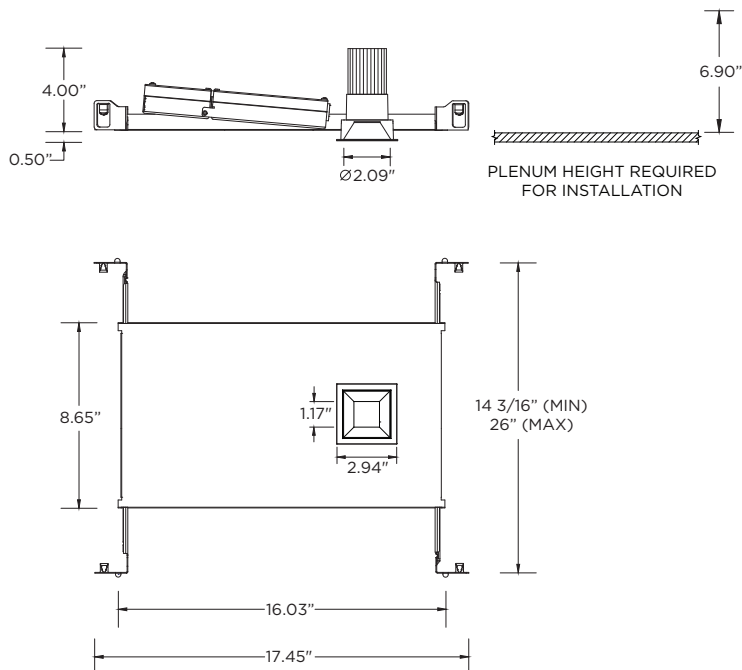
WARRANTY

5 year limited warranty
LED system rated for operation in ambient environments up to 25°C

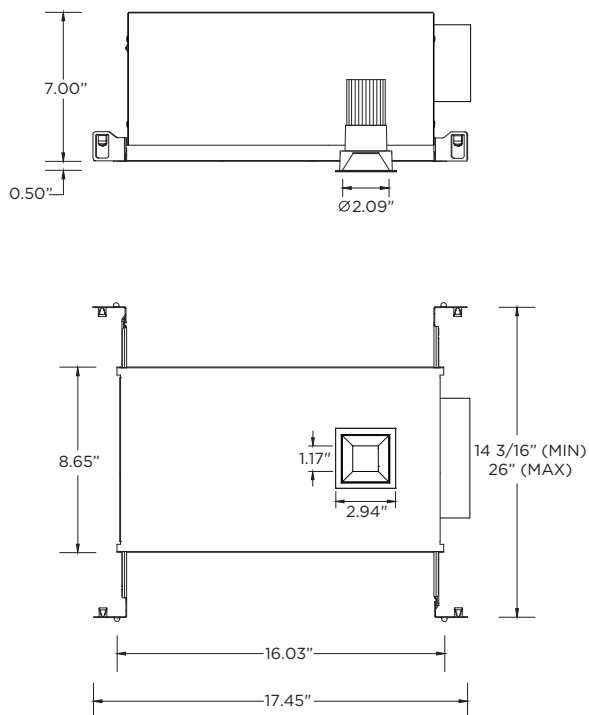
RMD - REMODEL (NON-IC)



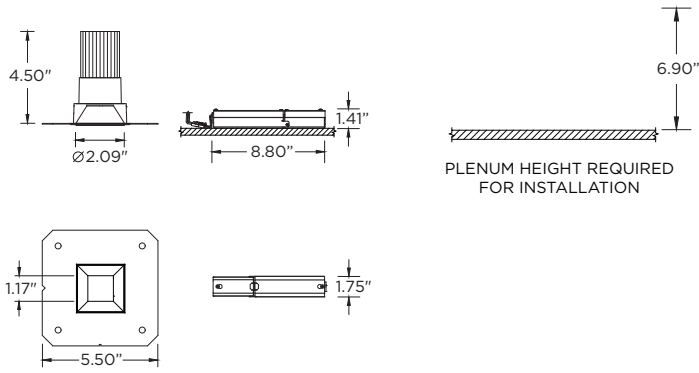
NCF - NEW CONSTRUCTION FRAME (NON-IC)



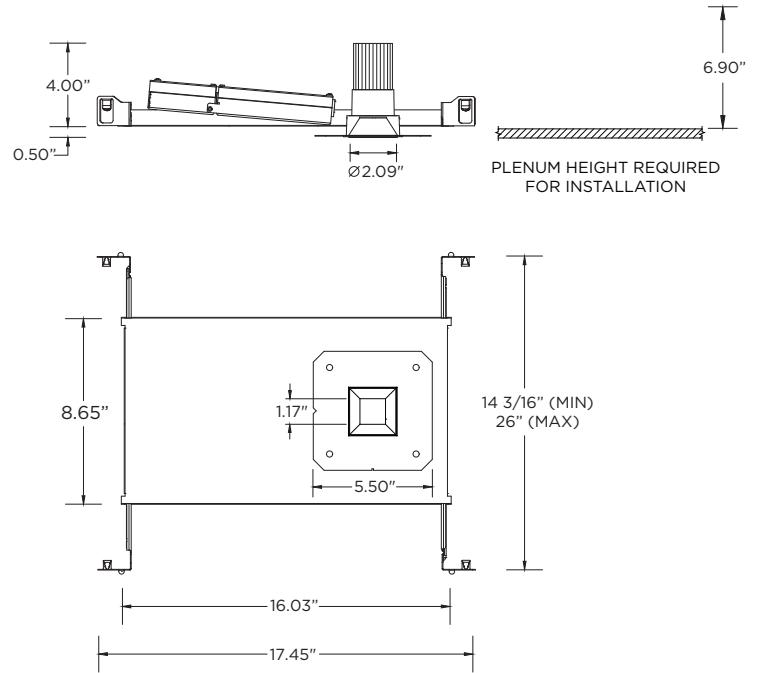
NC - NEW CONSTRUCTION HOUSING
IC RATED - MAX 1250LM
NON-IC AND CP RATED - MAX 1450lm



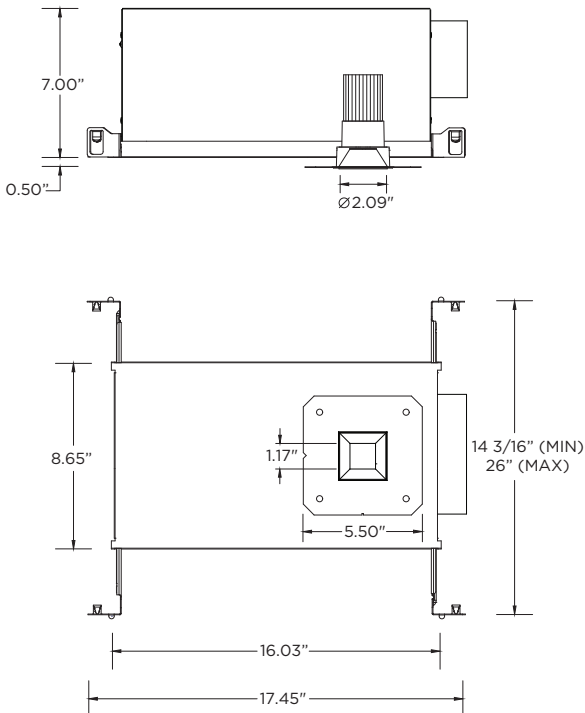
RMD - REMODEL (NON-IC)



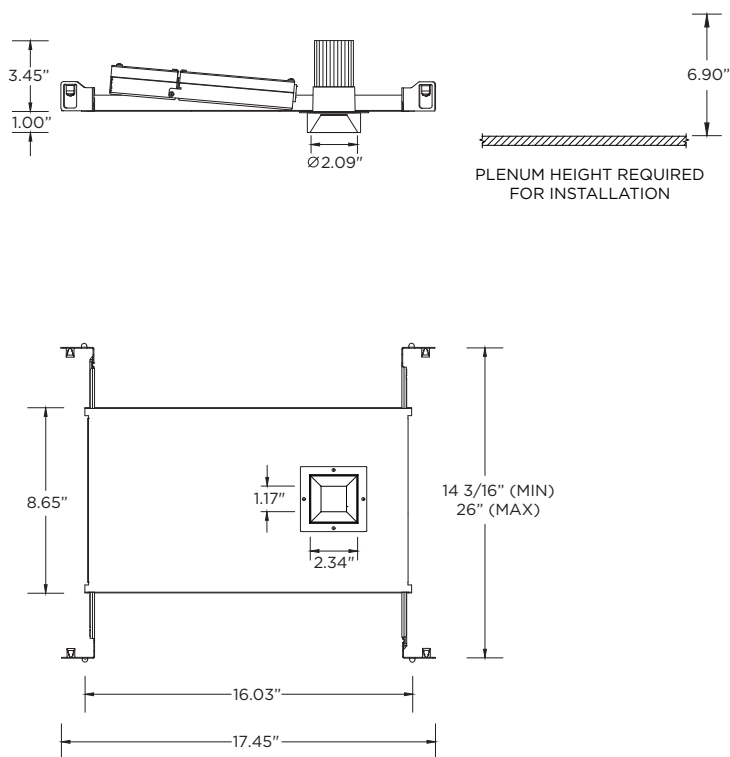
NCF - NEW CONSTRUCTION FRAME (NON-IC)



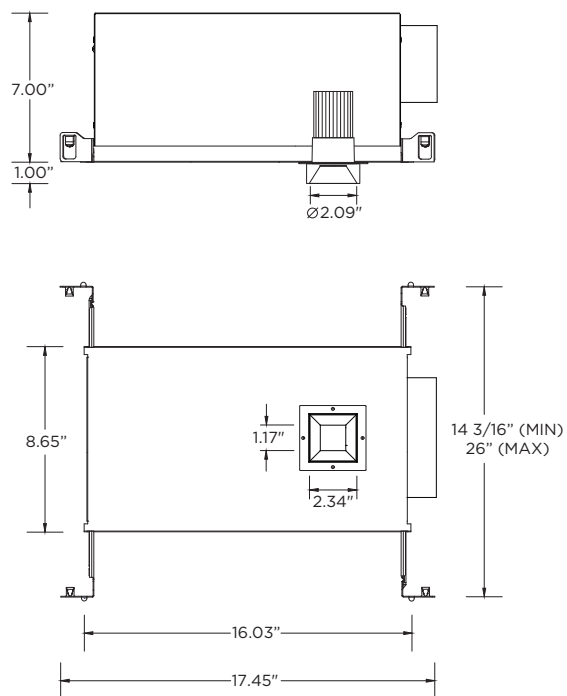
NC - NEW CONSTRUCTION HOUSING
IC RATED - MAX 1250LM
NON-IC AND CP RATED - MAX 1450lm



NCF - NEW CONSTRUCTION FRAME (NON-IC)



NC - NEW CONSTRUCTION HOUSING
IC RATED - MAX 1250LM
NON-IC AND CP RATED - MAX 1450lm

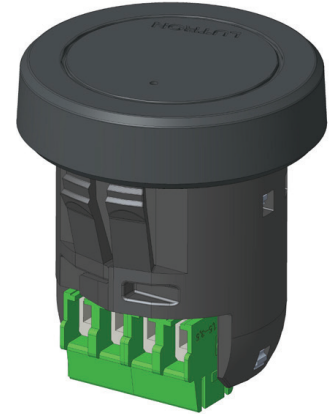


The Athena wireless node (AWN) is a radio frequency (RF) device that enables simple, digital control of individual light fixtures in an Athena or myRoom XC control system. AWN is offered as a factory-installed RF control option across select 3G luminaires.

The Athena wireless processor or Clear Connect gateway – Type X is required to operate an Athena wireless node in an Athena or myRoom XC control system via a simple setup process using an iOS® or Android® compatible app. This enables these fixtures to be controllable by other Lutron wall controls, keypads, sensors, Pico remote controls, etc



AWNR
RF NODE ONLY
FACTORY-INSTALLED
FOR INDIVIDUAL
FIXTURE CONTROL



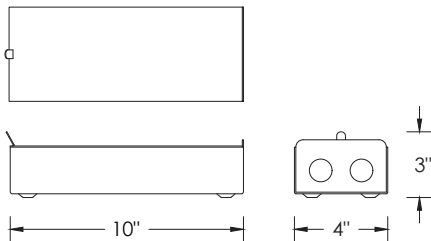
DRIVER COMPATIBILITY

Driver / dimming types:

- RDIM - REMOTE 0-10V (100-1%)
- RDALI - REMOTE DALI-2 (Type 6, 100-1%)

REMOTE ELECTRICAL ENCLOSURE

Maximum distance of 100FT using 12AWG



DEFAULT BEHAVIOR PRIOR TO PROGRAMMING

Light level defaults to 100%

Device runs an unprogrammed startup sequence until added to the Athena system

RF PLACEMENT (FIELD GUIDELINE)

Each node should be installed within 25 ft (7.6 m) of two or more Clear Connect – Type X devices (nodes / gateways / processors)
Follow Lutron Athena design guidelines for device density and coverage

SERVICING

Not accessible through luminaire aperture

If the Awnr node is replaced, it must be re-added / re-commissioned within the Athena system by the controls contractor.