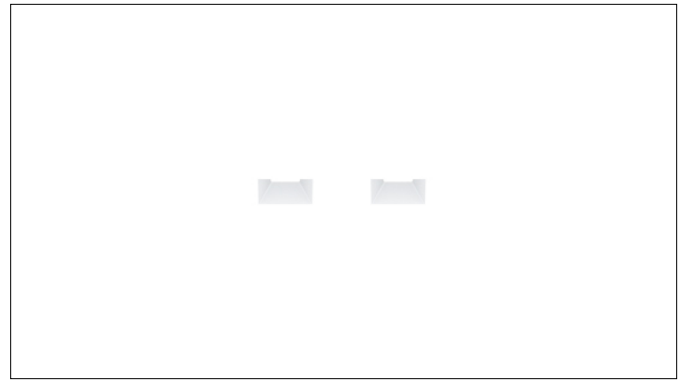


# 3G LIGHTING

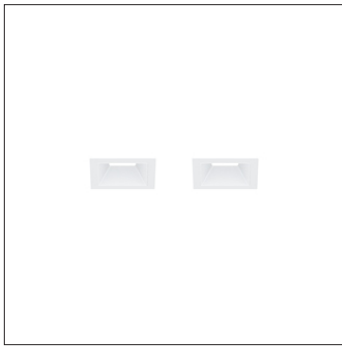
## 3G-DL2-20SF

2 LIGHT DOWNLIGHT  
2" FIXED DUAL APERTURE

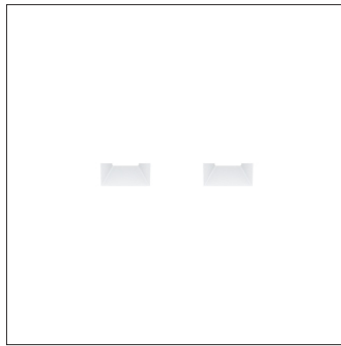
2" square dual aperture, fixed downlights  
Standard 95+ CRI LED system with performance up to 103 LPW  
Delivered lumen range per downlight up to 1700lm at 95+ CRI  
Installation and fully serviceable from below ceiling plane  
15° to 90° beam angle options suitable for various applications  
Declare® LBC Red List Free  
Companion to 3G's Cylinder product family



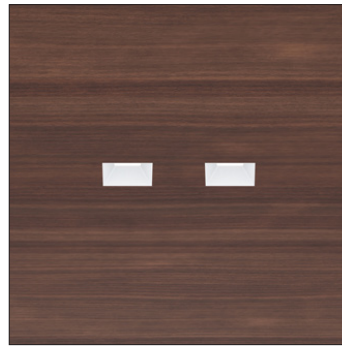
### TRIM FLANGE



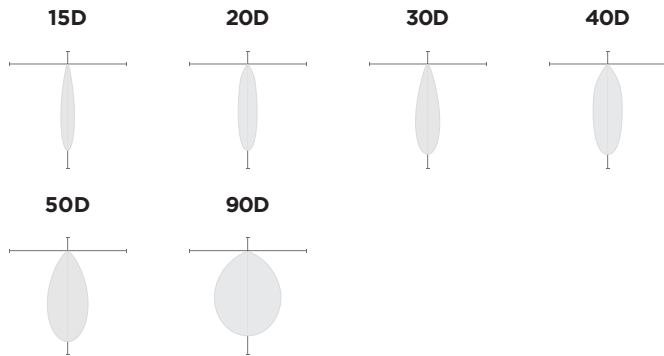
### TRIMLESS



### MILLWORK



### OPTICS



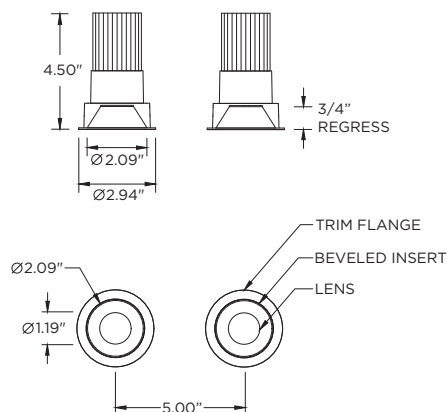
### PERFORMANCE (PER DOWNLIGHT)

LUMEN OUTPUT	DELIVERED LUMENS	SYSTEM WATTS	EFFICACY (LPW)
750	750	7.5	100
1000	1000	10.3	97
1250	1250	13.0	96
1450	1450	15.6	93
1650	1650	18.5	89

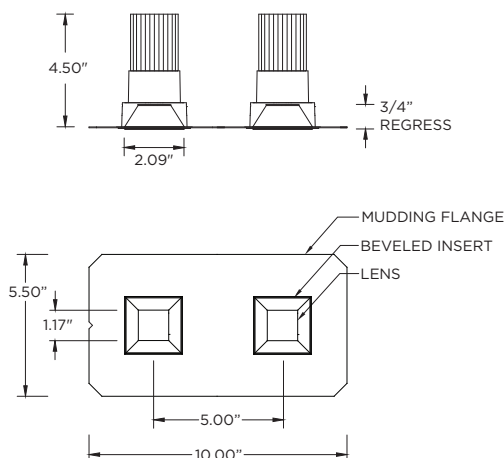
BASED ON 95+ CRI, 3500K, 30D OPTIC WITH SOFTENING LENS  
PERFORMANCE DATA PER DOWNLIGHT. DOUBLE THE VALUES  
SHOWN FOR TOTAL PERFORMANCE  
Lumen output and actual wattage may vary +/- 5%

### DIMENSIONS

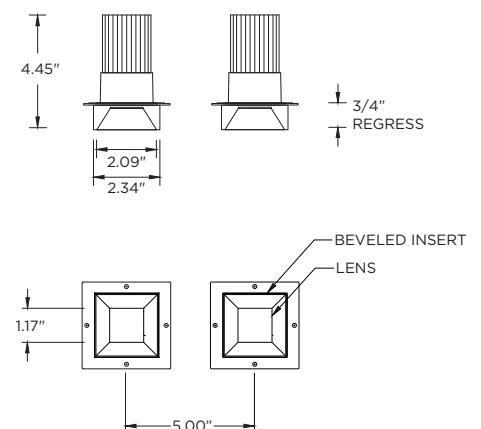
#### TRIM FLANGE



#### TRIMLESS



#### MILLWORK



<b>PROJECT:</b>				<b>TYPE:</b>			
<b>CATALOG#:</b>				<b>DATE:</b>		<b>QTY:</b>	

CAT. NO	LUMEN OUTPUT	CRI	COLOR TEMP	BEAM ANGLE
<b>3G-DL2-20SF</b>	<b>07</b> - 750 LUMENS (1500 TOTAL) <b>10</b> - 1000 LUMENS (2000 TOTAL) <b>12</b> - 1250 LUMENS (2500 TOTAL) <b>14</b> - 1450 LUMENS (2900 TOTAL) <b>16</b> - 1650 LUMENS (3300 TOTAL)	<b>H95</b> - 95+ CRI	<b>24K</b> - 2400K <b>27K</b> - 2700K <b>30K</b> - 3000K <b>35K</b> - 3500K <b>40K</b> - 4000K	<b>15D</b> - 15° <sup>1</sup> <b>20D</b> - 20° <b>30D</b> - 30° <b>40D</b> - 40° <b>50D</b> - 50° <b>90D</b> - 90° <sup>2</sup>
All lumen outputs are <b>delivered lumens</b> at 95+ CRI				

VOLTAGE	DRIVER	TRIM FLANGE	BEVELED INSERT
<b>UNV</b> - 120/277V <b>120</b> - 120V	<b>DIM</b> - 0-10V (100-1%) <b>LE</b> - PHASE DIM <sup>3</sup> (TRIAC/ELV, 100-1%) <b>D01</b> - 0-10V (100-0.1%) <b>DALI</b> - DALI (100-1%) <sup>4</sup> <b>RDIM</b> - REMOTE 0-10V (100-1%) <sup>5</sup> (FOR LUTRON ATHENA RF NODE) <b>RDALI</b> - REMOTE DALI (100-1%) <sup>5</sup> (FOR LUTRON ATHENA RF NODE)	<b>WT</b> - WHITE <b>BT</b> - BLACK <b>ST</b> - SILVER <b>XTR</b> - TRIMLESS (MUD-IN DRYWALL) <b>MWF</b> - FLANGELESS <sup>6</sup> MILLWORK	<b>WI</b> - WHITE <b>BI</b> - BLACK <b>SI</b> - SILVER

HOUSING TYPE	OPTIONS
<b>NCF</b> - NEW CONSTRUCTION FRAME (NON-IC)  NCF housings ship with nailer type bar hangers	<b>AWN</b> - LUTRON ATHENA RF NODE <sup>7</sup> <b>SF</b> - SOFTENING LENS (SUPPLIED STANDARD) * <b>SB</b> - SANDBLASTED LENS * <b>HX</b> - BLACK HEXCELL LOUVER * <b>WL</b> - WET LOCATION RATED (SUPPLIED WITH SOFTENING LENS) <b>EMR</b> - REMOTE EMERGENCY BATTERY <sup>8</sup>  *Maximum 2 optical accessories

- <sup>1</sup> 15D reflector available up to 1000lm  
<sup>2</sup> 90D lens optic not available with other lens options  
<sup>3</sup> Phase dimming options available in 120V only  
<sup>4</sup> DALI-2 (Type 6) provided as standard  
<sup>5</sup> Supplied with enclosure with Athena RF Node and driver. Installed remotely by others. Not accessible through fixture aperture  
<sup>6</sup> MWF not available with Remodel (NON-IC)  
<sup>7</sup> Available with RDIM or RDALI driver options  
<sup>8</sup> Supplied with enclosure with Emergency Battery and driver. Installed remotely by others. Not accessible through fixture aperture

## PERFORMANCE (PER DOWNLIGHT)

LUMEN OUTPUT	DELIVERED LUMENS	SYSTEM WATTS	EFFICACY (LPW)
750	750	7.5	100
1000	1000	10.3	97
1250	1250	13.0	96
1450	1450	15.6	93
1650	1650	18.5	89

BASED ON 95+ CRI, 3500K, 30D OPTIC WITH SOFTENING LENS  
PERFORMANCE DATA PER DOWNLIGHT. DOUBLE THE VALUES  
SHOWN FOR TOTAL PERFORMANCE

Lumen output and actual wattage may vary +/- 5%

## HOUSING

New construction frame housing for installation in any site condition  
Maximum 1.00" ceiling thickness. Consult factory for modifications  
All housing options (except millwork) designed to be easily  
converted in field to trim or trimless with minimal components  
Housing rated for #12 AWG (4 in, 4 out), 90°C conductors and  
through branch wiring

## BEVELED INSERT

Cast aluminum beveled insert with matte powder coated finish  
2" aperture with regressed LED source for enhanced glare control

## TRIM

Cast aluminum trim flange with matte powder coated finish  
and minimal 0.375" overlap

## TRIMLESS

Mudding flange features a perforated surface for easy mud-in application  
Integral blocking support provided to ensure fixture is properly  
secured within ceiling structure

## OPTICS

High performance, TIR optic  
Beam angle available in 15°, 20°, 30°, 40°, 50° and 90°  
Optics are field replaceable (15° not interchangeable)  
Softening lens supplied standard

## LED SYSTEM

Standard 95+ CRI  
Color consistency <2 SDCM  
Available in 24K, 27K, 30K, 35K, and 40K  
L90 > 50,000 hours

## MULTIPLIERS

BEAM ANGLE	
15D	0.95
20D	1.00
30D	1.00
40D	0.97
50D	0.94
90D	0.86

COLOR TEMP	
2400K	0.91
2700K	0.95
3000K	0.97
3500K	1.00
4000K	1.03

## ELECTRICAL

Standard 0-10V, constant current drivers  
100-1% dimming range and >0.9 power factor  
Standard 120/277V universal voltage with several driver options  
120V Forward Phase/Reverse Phase driver option (100-1%)  
Integral drivers are easily accessible through luminaire aperture

## EMERGENCY

7W output for 90 minutes (+/- 700lm at 95+ CRI). Title 24 Certified  
Remote emergency battery (not accessible through fixture aperture)  
Maximum remote mounting distance: 50ft (12AWG) or 25ft (14AWG)  
Caution: Emergency Battery utilizes more than one power source  
and servicing should be performed by qualified personnel

## MOUNTING

Trim fixture designed for use in drywall, wood, acoustic, and  
other architectural ceilings  
Trimless fixture designed for use in drywall, mud-in ceiling applications  
Millwork Flangeless option for wood ceilings and acoustic  
Recommended trim and mud-in trimless cut-out (2.625" x 2.625")  
Recommended Millwork Flangeless cut-out (2.625" x 2.625")  
Housing ships with nailer type bar hangers (14" to 26" extension)

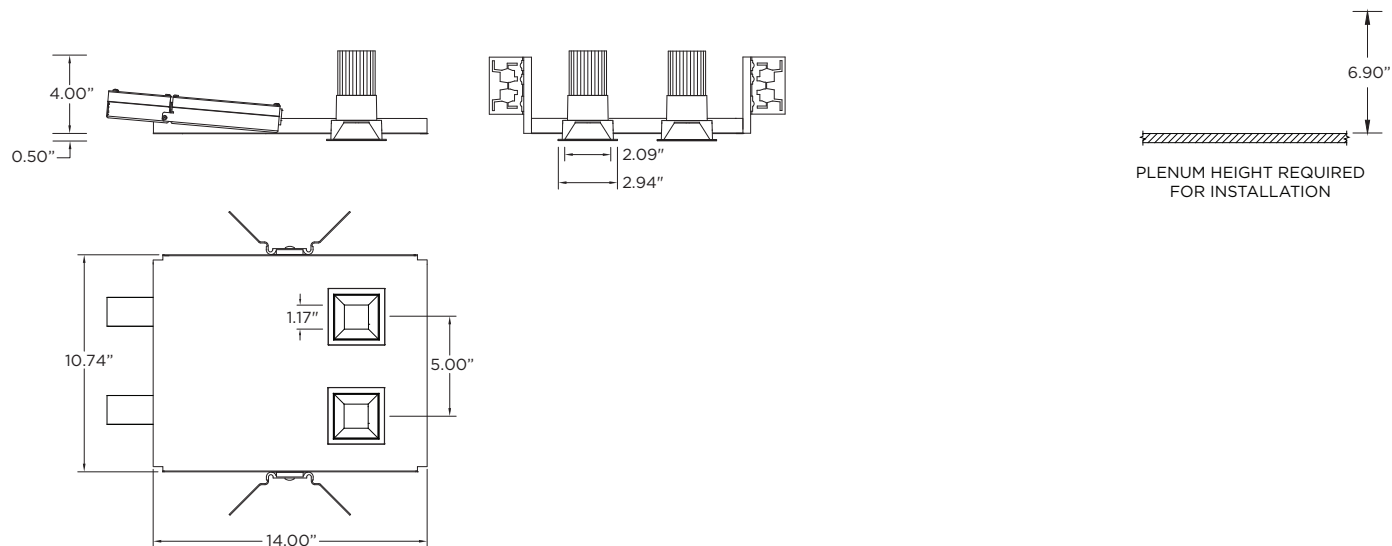
## LISTING

ETL listed and conforms to UL1598 standard  
Certified to CSA22.2 NO.250.0.  
Declare® LBC Red List Free  
Rated for dry or damp locations

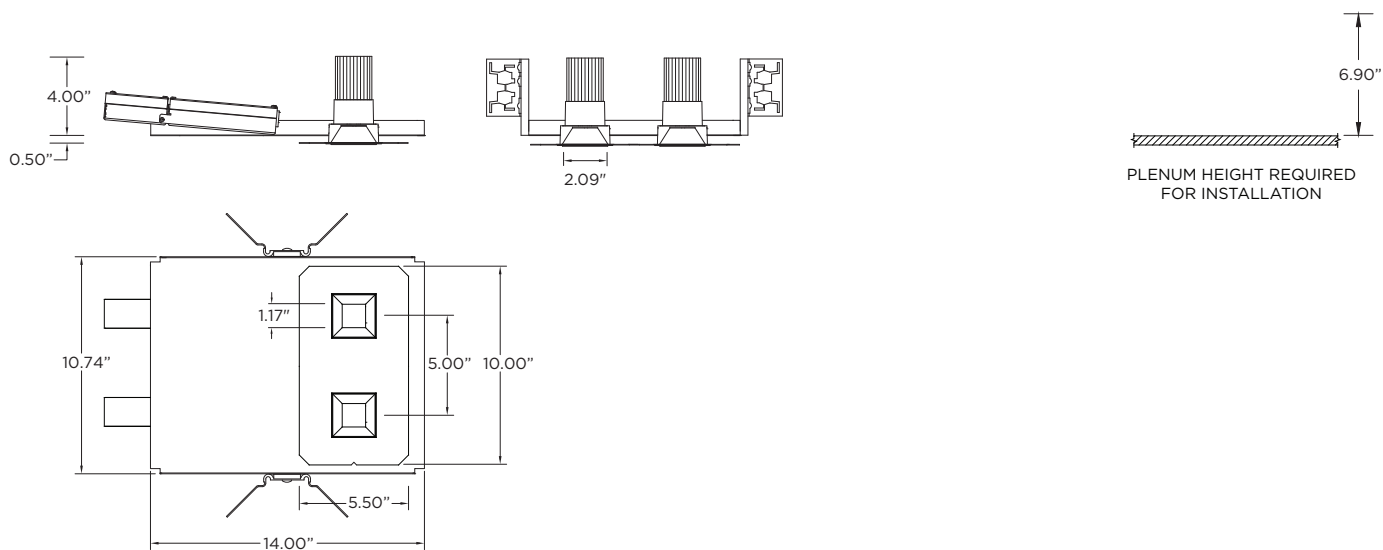
## WARRANTY

5 year limited warranty  
LED system rated for operation in ambient environments up to 25°C

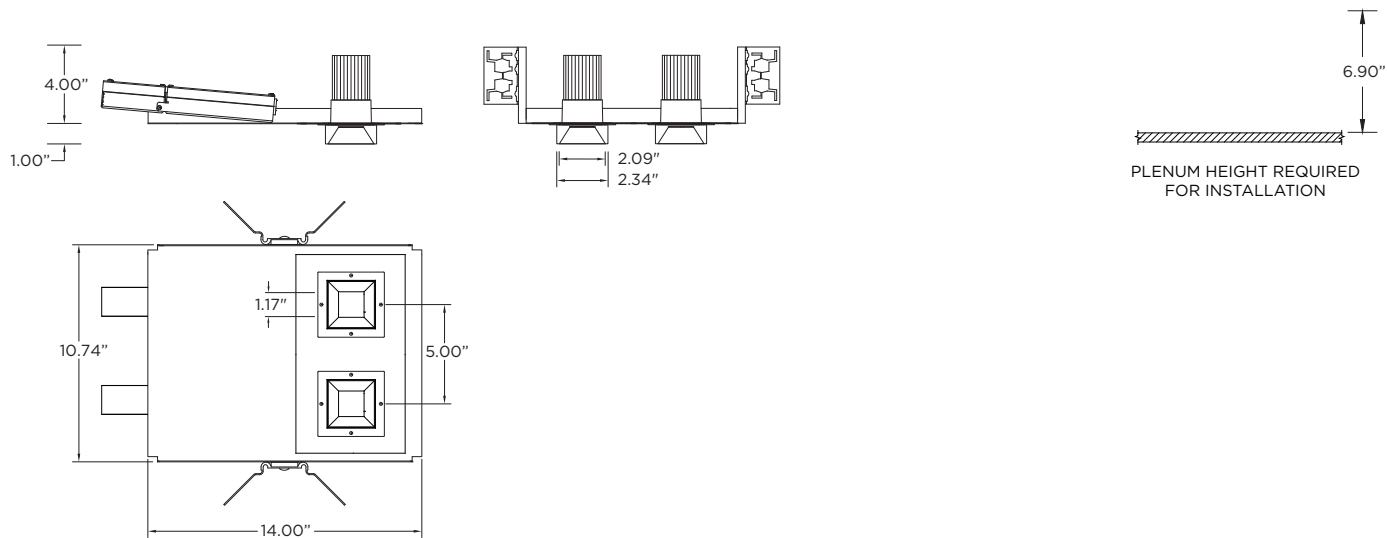
**WT -TRIM**



**XTR - TRIMLESS**



**MWF - FLANGELESS MILLWORK**

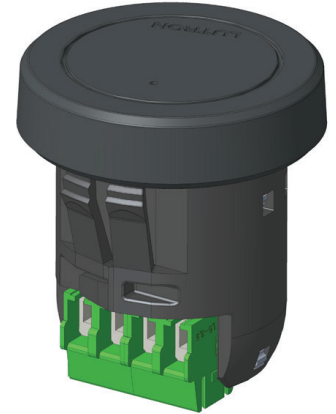


The Athena wireless node (AWN) is a radio frequency (RF) device that enables simple, digital control of individual light fixtures in an Athena or myRoom XC control system. AWN is offered as a factory-installed RF control option across select 3G luminaires.

The Athena wireless processor or Clear Connect gateway – Type X is required to operate an Athena wireless node in an Athena or myRoom XC control system via a simple setup process using an iOS® or Android® compatible app. This enables these fixtures to be controllable by other Lutron wall controls, keypads, sensors, Pico remote controls, etc



**AWNR**  
RF NODE ONLY  
FACTORY-INSTALLED  
FOR INDIVIDUAL  
FIXTURE CONTROL



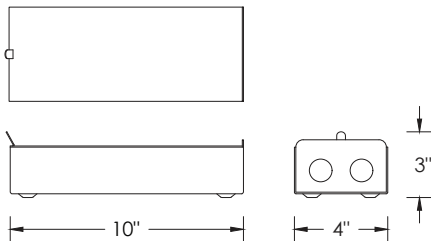
### DRIVER COMPATIBILITY

Driver / dimming types:

- RDIM - REMOTE 0-10V (100-1%)
- RDALI - REMOTE DALI-2 (Type 6, 100-1%)

### REMOTE ELECTRICAL ENCLOSURE

Maximum distance of 100FT using 12AWG



### DEFAULT BEHAVIOR PRIOR TO PROGRAMMING

Light level defaults to 100%

Device runs an unprogrammed startup sequence until added to the Athena system

### RF PLACEMENT (FIELD GUIDELINE)

Each node should be installed within 25 ft (7.6 m) of two or more Clear Connect – Type X devices (nodes / gateways / processors)  
Follow Lutron Athena design guidelines for device density and coverage

### SERVICING

Not accessible through luminaire aperture

If the Awnr node is replaced, it must be re-added / re-commissioned within the Athena system by the controls contractor.

Declare® is a product transparency program administered by the International Living Future Institute (ILFI), providing standardized disclosure of product ingredients, manufacturing location, service life, end-of-life pathways, and Living Building Challenge compliance status.

### PRODUCT FAMILY COVERAGE — DOWNLIGHTS

Recessed downlights for general, accent, and wall wash applications. Available in fixed and adjustable configurations with multiple beam angles, lumen packages, 95+ CRI as standard, low-glare/UGR-rated options, and multiple trim conditions. Options include adjustable modules, dual-axis gimbals, and low-glare multicell optics.

### LBC RED LIST FREE

This product family carries a Declare® designation of LBC Red List Free, the highest designation within the Declare program. Products with this designation contain no intentionally added Red List chemicals above applicable Declare reporting thresholds and have been evaluated against the Living Building Challenge Red List.



### BUILDING CERTIFICATION PROGRAMS

Material transparency documentation is increasingly requested as part of building certification programs and owner standards. Declare labels may be used as supporting documentation for project teams pursuing:

- Living Building Challenge (LBC)
- WELL Building Standard™ v1
- WELL Building Standard™ v2
- LEED®
- Other material disclosure and material health initiatives

Project certification requirements are determined at the building level and should be evaluated by the project team.

# Declare.

## Downlight Products 3G Lighting

**Final Assembly:** Woodbridge, Ontario, Canada  
**Life Expectancy:** 7+ Year(s)  
**End of Life Options:** Recyclable (95%), Landfill (5%)

### Ingredients:

Steel, cold roll UNS G10080; Aluminum UNS A96063; Aluminum; Pulp, cellulose; Nylon 6; 2-Propenoic acid, butyl ester, polymer with ethenylbenzene and 2-propenenitrile; Carbonic dichloride, polymer with 4,4'-(1-methylethylidene)bis[phenol]; Paper; Soda lime; Starch, base-hydrolyzed, borated; Magnesium; 2,4,8,10-Tetraoxa-3,9-diphosphaspiro[5.5]undecane, 3,9-bis[2,4-bis(1,1-dimethylethyl)phenoxy]-; Silicon; Vinyl acetate; 1,3-Propanediol, 2-ethyl-2-(hydroxymethyl)-; Chromium, metallic

### Living Building Challenge Criteria: Compliant

#### I-13 Red List:

- |   |                             |
|---|-----------------------------|
| <input checked="" type="checkbox"/> LBC Red List Free | % Disclosed: 100% at 100ppm |
| <input type="checkbox"/> LBC Red List Approved        | VOC Content: Not Applicable |
| <input type="checkbox"/> Declared                     |                             |

**I-10 Interior Performance:** Not Applicable

**I-14 Responsible Sourcing:** Not Applicable

GLG-0004  
EXP. 01 JUN 2027  
Original Issue Date: 2026

MANUFACTURER RESPONSIBLE FOR LABEL ACCURACY  
INTERNATIONAL LIVING FUTURE INSTITUTE™ [living-future.org/declare](https://living-future.org/declare)