

# 3G LIGHTING

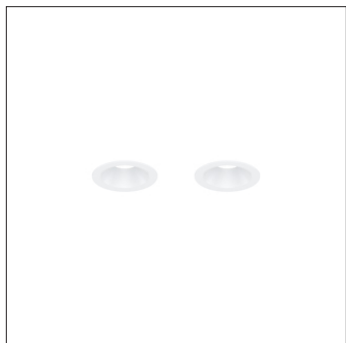
## 3G-DL2-33RA

2 LIGHT DOWNLIGHT  
3" ADJUSTABLE DUAL APERTURE

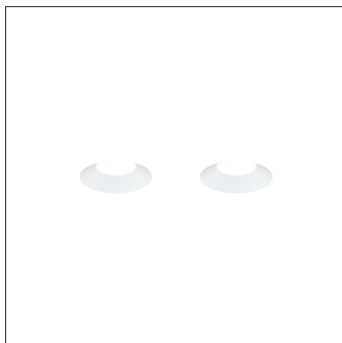
3" diameter dual aperture, adjustable downlights  
Standard 95+ CRI LED system with performance up to 141 LPW  
Delivered lumen range per downlight up to 3240lm at 95+ CRI  
Installation and fully serviceable from below ceiling plane  
0°- 40° lockable tilt and 360° rotation  
Declare® LBC Red List Free  
Companion to 3G's Cylinder product family



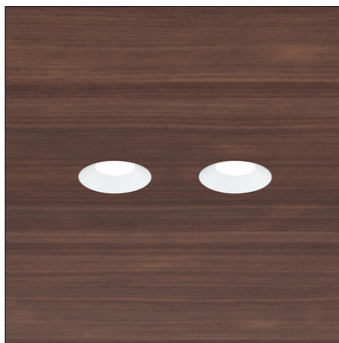
### TRIM FLANGE



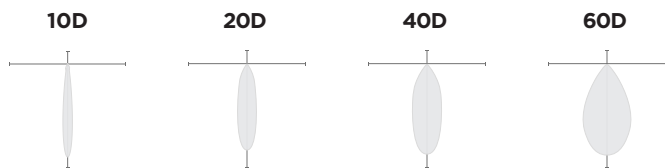
### TRIMLESS



### MILLWORK



### OPTICS



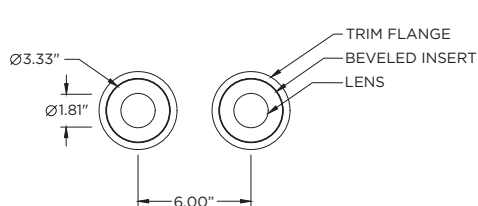
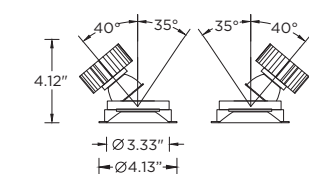
### PERFORMANCE (PER DOWNLIGHT)

LUMEN OUTPUT	DELIVERED LUMENS	SYSTEM WATTS	EFFICACY (LPW)
1000	1000	9.3	109
1500	1500	14.0	107
2000	2000	25.4	79
2500	2500	32.0	78

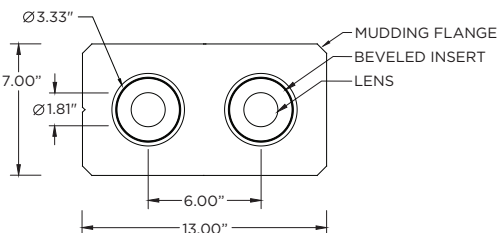
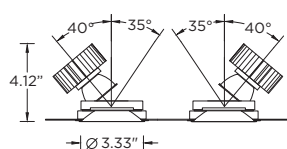
BASED ON 95+ CRI, 3500K, 40D OPTIC WITH SOFTENING LENS  
PERFORMANCE DATA PER DOWNLIGHT. DOUBLE THE VALUES  
SHOWN FOR TOTAL PERFORMANCE  
Lumen output and actual wattage may vary +/- 5%

### DIMENSIONS

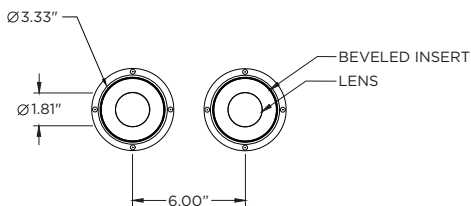
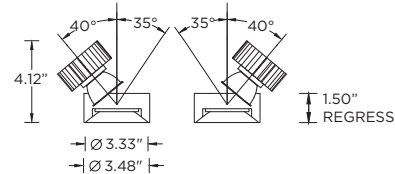
#### TRIM FLANGE



#### TRIMLESS



#### MILLWORK



<b>PROJECT:</b>		<b>TYPE:</b>	
<b>CATALOG#:</b>		<b>DATE:</b>	<b>QTY:</b>

CAT. NO	LUMEN OUTPUT	CRI	COLOR TEMP	BEAM ANGLE
<b>3G-DL2-33RA</b>	<b>10</b> - 1000 LUMENS (2000 TOTAL) <b>15</b> - 1500 LUMENS (3000 TOTAL) <b>20</b> - 2000 LUMENS (4000 TOTAL) <b>25</b> - 2500 LUMENS (5000 TOTAL)	<b>H95</b> - 95+ CRI	<b>27K</b> - 2700K <b>30K</b> - 3000K <b>35K</b> - 3500K <b>40K</b> - 4000K	<b>10D</b> - 10° <sup>1</sup> <b>20D</b> - 20° <sup>1</sup> <b>40D</b> - 40° <b>60D</b> - 60°
All lumen outputs are <b>delivered lumens</b> at 95+ CRI				

VOLTAGE	DRIVER	TRIM FLANGE	BEVELED INSERT
<b>UNV</b> - 120/277V <b>120</b> - 120V <b>347</b> - 347V <sup>2</sup>	<b>DIM</b> - 0-10V (100-1%) <b>LE</b> - PHASE DIM <sup>3</sup> (TRIAC/ELV, 100-1%) <b>D01</b> - 0-10V (100-0.1%) <b>DALI</b> - DALI (100-1%) <sup>4</sup> <b>DHL2</b> - LUTRON HI-LUME LDE (100-1%) <b>DMX</b> - DMX (100-0%)	<b>WT</b> - WHITE <b>BT</b> - BLACK <b>ST</b> - SILVER <b>XTR</b> - TRIMLESS (MUD-IN DRYWALL) <b>MWF</b> - FLANGELESS <sup>5</sup> MILLWORK	<b>WI</b> - WHITE <b>BI</b> - BLACK <b>SI</b> - SILVER

HOUSING TYPE	OPTIONS
<b>NC</b> - NEW CONSTRUCTION HOUSING (NON-IC AND CP RATED) <b>IC</b> - NEW CONSTRUCTION <sup>6</sup> IC HOUSING  NC and IC housings available with optional C-channel bar hangers	<b>AWN</b> - LUTRON ATHENA RF NODE <sup>7</sup> <b>SF</b> - SOFTENING LENS (SUPPLIED STANDARD) <b>HX</b> - HEXCELL LOUVER <b>SB</b> - SANDBLASTED LENS <b>LS</b> - LINEAR SPREAD LENS <b>WL</b> - WET LOCATION RATED <b>BH</b> - C-CHANNEL BAR HANGERS <b>EMR</b> - EMERGENCY BATTERY (REMOTE) <sup>8</sup>  *Maximum 2 optical accessories

- <sup>1</sup> 10D and 20D reflector available up to 1500lm  
<sup>2</sup> 347 available in "DIM" 0-10V only (100-1%)  
<sup>3</sup> Phase dimming options available in 120V only  
<sup>4</sup> DALI-2 (Type 6) provided as standard  
<sup>5</sup> MWF not available with Remodel (NON-IC)  
<sup>6</sup> New Construction IC housing available up to 1500lm  
<sup>7</sup> Available with DIM driver options  
<sup>8</sup> Supplied with enclosure with Emergency Battery and driver. Installed remotely by others. Not accessible through fixture aperture

## PERFORMANCE (PER DOWNLIGHT)

LUMEN OUTPUT	DELIVERED LUMENS	SYSTEM WATTS	EFFICACY (LPW)
1000	1000	9.3	109
1500	1500	14.0	107
2000	2000	25.4	79
2500	2500	32.0	78

BASED ON 95+ CRI, 3500K, 40D OPTIC WITH SOFTENING LENS  
PERFORMANCE DATA PER DOWNLIGHT. DOUBLE THE VALUES  
SHOWN FOR TOTAL PERFORMANCE

Lumen output and actual wattage may vary +/- 5%

## MULTIPLIERS

BEAM ANGLE	
10D	0.80
20D	1.27
40D	1.00
60D	0.88

COLOR TEMP	
2700K	0.98
3000K	1.00
3500K	1.00
4000K	1.02

## HOUSING

New construction frame housing for installation in any site condition  
Maximum 0.625" ceiling thickness. Consult factory for modifications  
All housing options (except millwork) designed to be easily  
converted in field to trim or trimless with minimal components  
Housing rated for #12 AWG (4 in, 4 out), 90°C conductors and  
through branch wiring

## BEVELED INSERT

Cast aluminum beveled insert with matte powder coated finish  
3" aperture with regressed LED source for enhanced glare control

## TRIM

Cast aluminum trim flange with matte powder coated finish  
and minimal 0.375" overlap

## TRIMLESS

Mudding flange features a perforated surface for easy mud-in application  
Integral blocking support provided to ensure fixture is properly  
secured within ceiling structure

## OPTICS

Proprietary anodized, aluminum reflectors  
Beam angle available in 10°, 20°, 40° and 60°  
Reflectors are field replaceable (10° and 20° reflector  
not interchangeable)  
Softening lens supplied standard  
0° - 40° lockable tilt and 360° lockable rotation (center  
beam optimization)

## LED SYSTEM

Standard 95+ CRI  
Color consistency <2 SDCM  
Available in 27K, 30K, 35K, and 40K  
L90 > 50,000 hours

## ELECTRICAL

Standard 0-10V, constant current drivers  
100-1% dimming range and >0.9 power factor  
Standard 120/277V universal voltage with several driver options  
120V Forward Phase/Reverse Phase driver option (100-1%)  
Integral drivers are easily accessible through luminaire aperture

## EMERGENCY

7W output for 90 minutes (+/- 765lm at 95+ CRI). Title 24 Certified  
Remote emergency battery (not accessible through fixture aperture)  
Maximum remote mounting distance: 50ft (12AWG) or 25ft (14AWG)  
Caution: Emergency Battery utilizes more than one power source  
and servicing should be performed by qualified personnel

## MOUNTING

Trim fixture designed for use in drywall, wood, acoustic, and  
other architectural ceilings  
Trimless fixture designed for use in drywall, mud-in ceiling applications  
Millwork Flangeless option for wood ceilings and acoustic  
Recommended trim and mud-in trimless cut-out (3.525" diameter)  
Recommended Millwork Flangeless cut-out (3.813" diameter)  
Optional C-Channel bar hangers available for NC and IC  
housing options

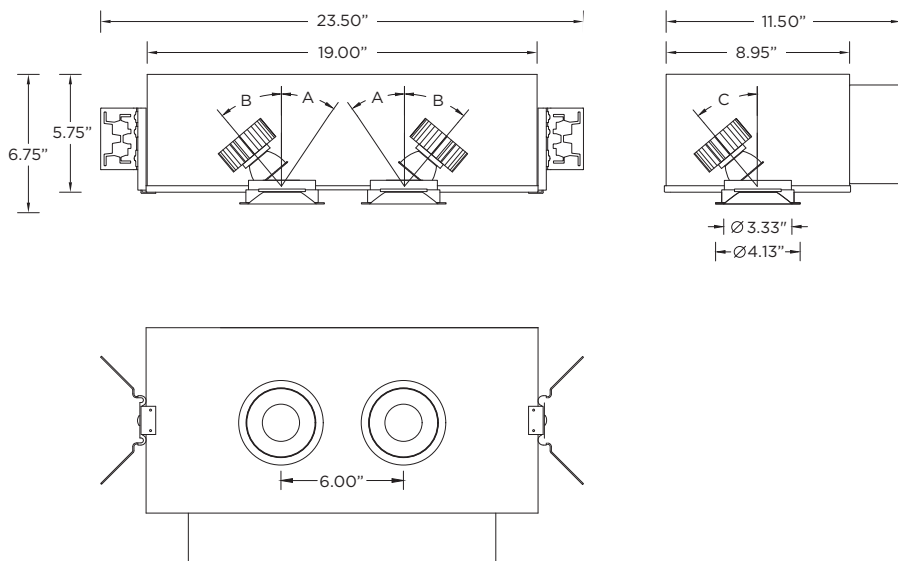
## LISTING

ETL listed and conforms to UL1598 standard  
Certified to CSA22.2 NO.250.0.  
Declare® LBC Red List Free  
Rated for dry or damp locations

## WARRANTY

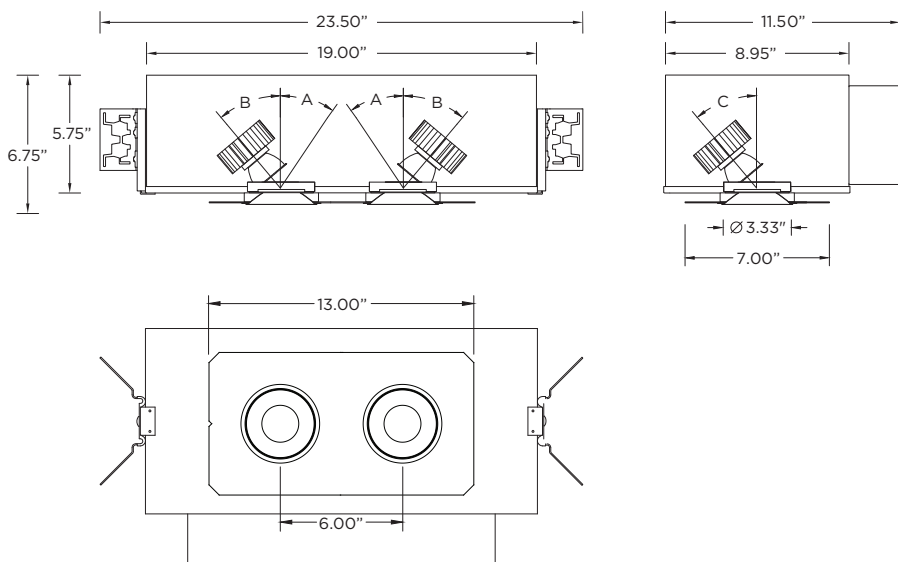
5 year limited warranty  
LED system rated for operation in ambient environments up to 25°C

**WT -TRIM**



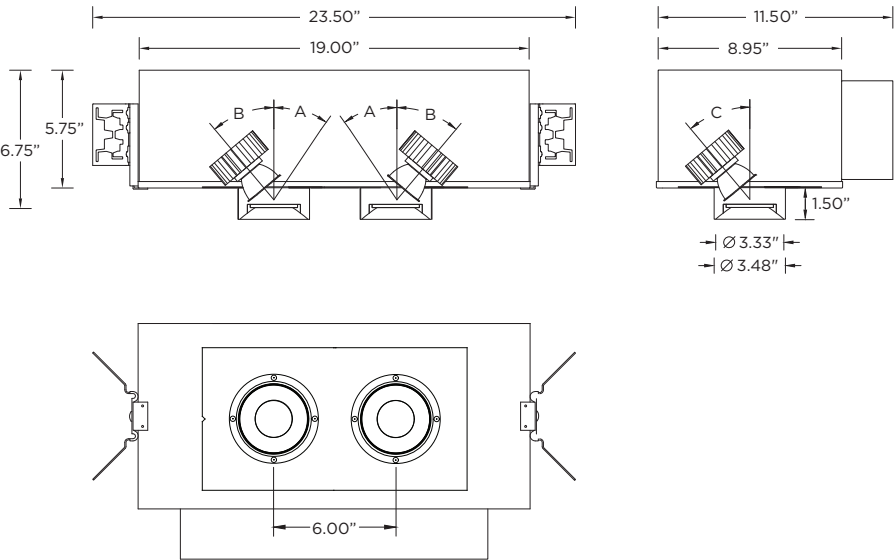
LUMEN OUTPUT	A	B	C
Up to 1500lm	35°	40°	40°
2000lm/2500lm	25°	40°	40°

**XTR - TRIMLESS**



LUMEN OUTPUT	A	B	C
Up to 1500lm	35°	40°	40°
2000lm/2500lm	25°	40°	40°

MWF - FLANGELESS MILLWORK



LUMEN OUTPUT	A	B	C
Up to 1500lm	35°	40°	40°
2000lm/2500lm	25°	40°	40°

The Athena wireless node (AWN) is a radio frequency (RF) device that enables simple, digital control of individual light fixtures in an Athena or myRoom XC control system. AWN is offered as a factory-installed RF control option across select 3G luminaires.

The Athena wireless processor or Clear Connect gateway – Type X is required to operate an Athena wireless node in an Athena or myRoom XC control system via a simple setup process using an iOS® or Android® compatible app. This enables these fixtures to be controllable by other Lutron wall controls, keypads, sensors, Pico remote controls, etc



**AWNR**  
RF NODE ONLY  
FACTORY-INSTALLED  
FOR INDIVIDUAL  
FIXTURE CONTROL



## HOUSING AND DRIVER COMPATIBILITY

Housing types:

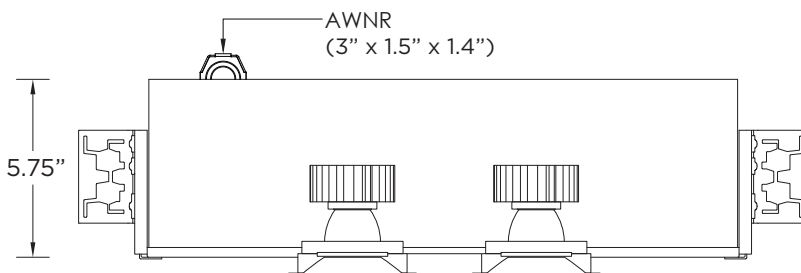
- NC (New Construction, non-IC and cp rated)
- IC (New Construction IC)

Driver / dimming types:

- DIM - 0-10V (100-1%)

**NC** - NEW CONSTRUCTION HOUSING (NON-IC AND CP RATED)

**IC** - NEW CONSTRUCTION IC HOUSING



## DEFAULT BEHAVIOR PRIOR TO PROGRAMMING

Light level defaults to 100%

Device runs an unprogrammed startup sequence until added to the Athena system

## RF PLACEMENT (FIELD GUIDELINE)

Each node should be installed within 25 ft (7.6 m) of two or more Clear Connect – Type X devices (nodes / gateways / processors)  
Follow Lutron Athena design guidelines for device density and coverage

## SERVICING

Not accessible through luminaire aperture

If the Awnr node is replaced, it must be re-added / re-commissioned within the Athena system by the controls contractor.

Declare® is a product transparency program administered by the International Living Future Institute (ILFI), providing standardized disclosure of product ingredients, manufacturing location, service life, end-of-life pathways, and Living Building Challenge compliance status.

### PRODUCT FAMILY COVERAGE — DOWNLIGHTS

Recessed downlights for general, accent, and wall wash applications. Available in fixed and adjustable configurations with multiple beam angles, lumen packages, 95+ CRI as standard, low-glare/UGR-rated options, and multiple trim conditions. Options include adjustable modules, dual-axis gimbals, and low-glare multicell optics.

### LBC RED LIST FREE

This product family carries a Declare® designation of LBC Red List Free, the highest designation within the Declare program. Products with this designation contain no intentionally added Red List chemicals above applicable Declare reporting thresholds and have been evaluated against the Living Building Challenge Red List.



### BUILDING CERTIFICATION PROGRAMS

Material transparency documentation is increasingly requested as part of building certification programs and owner standards. Declare labels may be used as supporting documentation for project teams pursuing:

- Living Building Challenge (LBC)
- WELL Building Standard™ v1
- WELL Building Standard™ v2
- LEED®
- Other material disclosure and material health initiatives

Project certification requirements are determined at the building level and should be evaluated by the project team.

# Declare.

## Downlight Products 3G Lighting

**Final Assembly:** Woodbridge, Ontario, Canada  
**Life Expectancy:** 7+ Year(s)  
**End of Life Options:** Recyclable (95%), Landfill (5%)

### Ingredients:

Steel, cold roll UNS G10080; Aluminum UNS A96063; Aluminum; Pulp, cellulose; Nylon 6; 2-Propenoic acid, butyl ester, polymer with ethenylbenzene and 2-propenenitrile; Carbonic dichloride, polymer with 4,4'-(1-methylethylidene)bis[phenol]; Paper; Soda lime; Starch, base-hydrolyzed, borated; Magnesium; 2,4,8,10-Tetraoxa-3,9-diphosphaspiro[5.5]undecane, 3,9-bis[2,4-bis(1,1-dimethylethyl)phenoxy]-; Silicon; Vinyl acetate; 1,3-Propanediol, 2-ethyl-2-(hydroxymethyl)-; Chromium, metallic

### Living Building Challenge Criteria: Compliant

#### I-13 Red List:

- |   |                             |
|---|-----------------------------|
| <input checked="" type="checkbox"/> LBC Red List Free | % Disclosed: 100% at 100ppm |
| <input type="checkbox"/> LBC Red List Approved        | VOC Content: Not Applicable |
| <input type="checkbox"/> Declared                     |                             |

**I-10 Interior Performance:** Not Applicable

**I-14 Responsible Sourcing:** Not Applicable

GLG-0004  
EXP. 01 JUN 2027  
Original Issue Date: 2026

MANUFACTURER RESPONSIBLE FOR LABEL ACCURACY  
INTERNATIONAL LIVING FUTURE INSTITUTE™ [living-future.org/declare](https://living-future.org/declare)