

3G LIGHTING

3G-SDL45RF

4.5" DOWNLIGHT CYLINDER
7" AND 11" HEIGHT

4.5" diameter high performance cylinders
Companion to 3G-DL45R series downlight family
Extruded aluminum housing with powder coated finish
Twist and lock construction and no visible hardware
Regressed LED source for enhanced glare control
Lumen range up to 3000lm (80+, 90+, and 97+ CRI options)
1% dimming standard with several integral driver options



| | | | |
|------------------|--|--------------|-------------|
| PROJECT: | | TYPE: | |
| CATALOG#: | | DATE: | QTY: |

| CAT. NO | FIXTURE HEIGHT | LUMEN OUTPUT | CRI | COLOR TEMP | BEAM ANGLE |
|-------------------|---------------------------------------------------------------------------------------------------------------------------------------|----------------------------------------------------------------------------------------------------------|------------------------------------------------------------------------------------------------|--------------------------------------------------------------------------------------|-----------------------------------------------------------------------------------------------------------------|
| 3G-SDL45RF | 7H - 7" HEIGHT * 11H - 11" HEIGHT | 10 - 1000 LUMENS 15 - 1500 LUMENS 22 - 2200 LUMENS 30 - 3000 LUMENS | S80 - 80+ CRI ¹ H90 - 90+ CRI H97 - 97+ CRI ¹ | 27K - 2700K 30K - 3000K 35K - 3500K 40K - 4000K | 10D - 10° ² 20D - 20° 40D - 40° 60D - 60° 90D - 90° * |
| | <small>*7H available up to 2200lm with integral driver (DIM & LE options). Select remote driver option for 3000lm outputs</small> | | | | <small>*90D reflector supplied standard with lens</small> |

| VOLTAGE | DRIVER | HOUSING FINISH | INSERT FINISH |
|------------------------------------------------------------------------------|------------------------------------------------------------------------------------------------------------------------------------------------------------------------------------------------------------------------------------------------------|----------------------------------------------------------------------------------------------|----------------------------------------------------------------------------------------------|
| UNV - 120/277V 120 - 120V 347 - 347V ³ | DIM - 0-10V (100-1%) LE - PHASE DIM ⁴ (TRIAC/ELV, 100-1%) D01 - 0-10V (100-0.1%) DALI - DALI (100-1%) ⁵ DHL2 - LUTRON HI-LUME (1% ECOSYSTEM) DMX - DMX (100-0%) | WH - WHITE BK - BLACK SV - SILVER CF - CUSTOM RAL COLOR | WI - WHITE BI - BLACK SI - SILVER CI - CUSTOM RAL COLOR |

| OPTIONS |
|---------------------------------------------------------------------------------------------------------------------------------------------------------------------------------------------------------------------------------------------------------------------------------------------------------|
| LS - LINEAR SPREAD LENS SB - SANDBLASTED LENS SF - SOFTENING LENS (SUPPLIED STANDARD) CFW - WHITE CONDUIT FEED CANOPY CFB - BLACK CONDUIT FEED CANOPY CFS - SILVER CONDUIT FEED CANOPY EMR - EMERGENCY BATTERY (REMOTE) ⁶ |
| <small>Maximum 1 optical accessory Not available with 90D reflector option</small> |

¹ S80 not available in 27K. H97 available in 30K and 35K as standard

² 10D reflector available up to 2200lm

³ 347 available in "DIM" 0-10V only (100-1%). Not available with 7H model

⁴ Phase dimming options available in 120V only

⁵ DALI-2 (Type 6) provided as standard. Consult factory for DALI Type 8 option

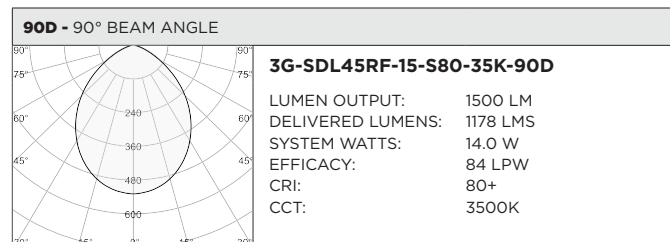
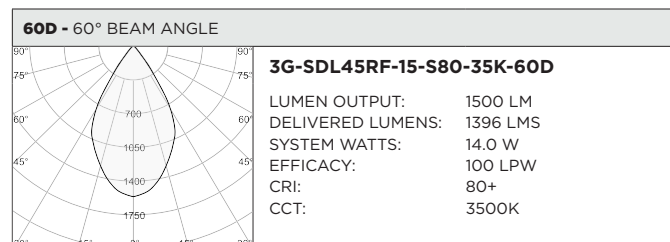
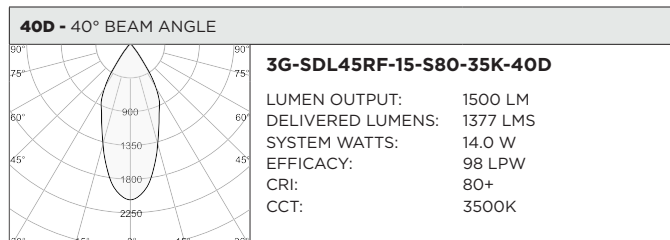
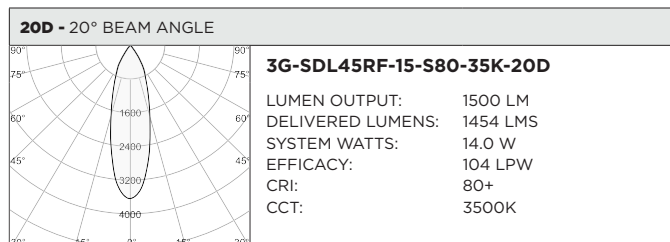
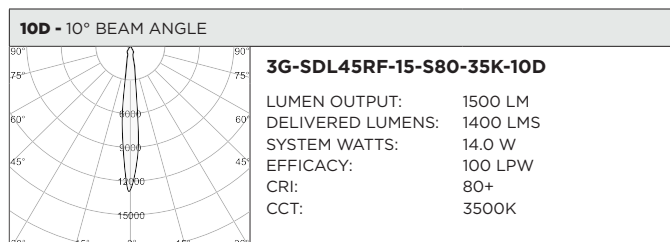
⁶ Emergency battery installed remotely by others. Not accessible through the inside of the fixture

BASED ON 20° BEAM ANGLE AND 3500K SOURCE

| LUMEN OUTPUT | 80+ CRI | | | 90+ CRI | | | 97+ CRI | | |
|-----------------|------------------|--------------|----------------|------------------|--------------|----------------|------------------|--------------|----------------|
| | DELIVERED LUMENS | SYSTEM WATTS | EFFICACY (LPW) | DELIVERED LUMENS | SYSTEM WATTS | EFFICACY (LPW) | DELIVERED LUMENS | SYSTEM WATTS | EFFICACY (LPW) |
| 1000LMs | 1080 | 10.3 | 105 | 950 | 10.3 | 92 | 886 | 10.3 | 86 |
| 1500LMs | 1454 | 14.0 | 104 | 1279 | 14.0 | 91 | 1192 | 14.0 | 85 |
| 2200LMs* | 2156 | 22.0 | 98 | 1898 | 22.0 | 86 | 1768 | 22.0 | 80 |
| 3000LMs | 2634 | 31.0 | 85 | 2318 | 31.0 | 75 | 2160 | 31.0 | 70 |

LUMEN OUTPUT MULTIPLIER: 27K=0.94, 30K=0.97, 35K=1.00, 40K=1.01

*FOR 7" MODEL (7H) WITH INTEGRAL DRIVER AND 2200LM OPTION, USE A MULTIPLIER OF 0.91



HOUSING

Extruded aluminum housing with powder coated finish
Twist and lock construction with no visible hardware

BEVELED INSERT

4.5" aperture with regressed LED source for enhanced glare control
Cast aluminum insert with matte powder coated finish

OPTICS

Proprietary anodized, aluminum reflectors are field replaceable (10° reflector not interchangeable)
Available in 10°, 20°, 40°, 60° and 90°

LISTING

ETL listed and conforms to UL1598 standard. Certified to CSA22.2 No.250.0.
Rated for indoor dry or damp locations

WARRANTY

5 Year Warranty on LED and drivers
Manufacturer 1 Year Warranty for defects in material and workmanship under normal use
Ambient temperature at fixture should not exceed 25°C

ELECTRICAL

Standard 0-10V, constant current drivers with 100-1% dimming range and >0.9 power factor
120V Forward Phase/Reverse Phase driver option with 100-1% dimming range
Standard 120/277V universal voltage with several driver options
All drivers are integral and easily accessible through luminaire aperture
7" models include 0-10V drivers that operate only with dimmers that sink current (not designed for source current)
Compatible 0-10V dimmers for all 7" height models listed below:
Lutron NFTV, **Lutron** DDTV, **Lutron** DVSTV, **Lutron** VIVE RMJS-8TN, **Leviton** IP710-DLZ, **Philips** SR1200ZTUNV, **Cooper** SF10P

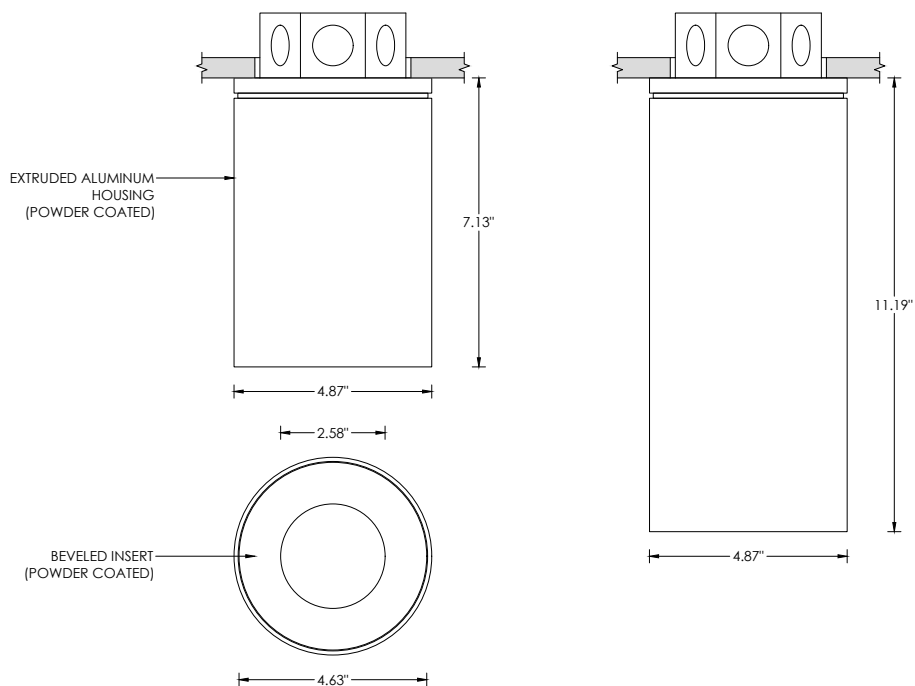
LED SYSTEM

Citizen LED module (field replaceable)
Color consistency <2 SDCM
Standard (80+ CRI). Optional (90+ and 97+ CRI)
Available in 27K, 30K, 35K, and 40K
L90 >50,000 hours
5 Year Warranty

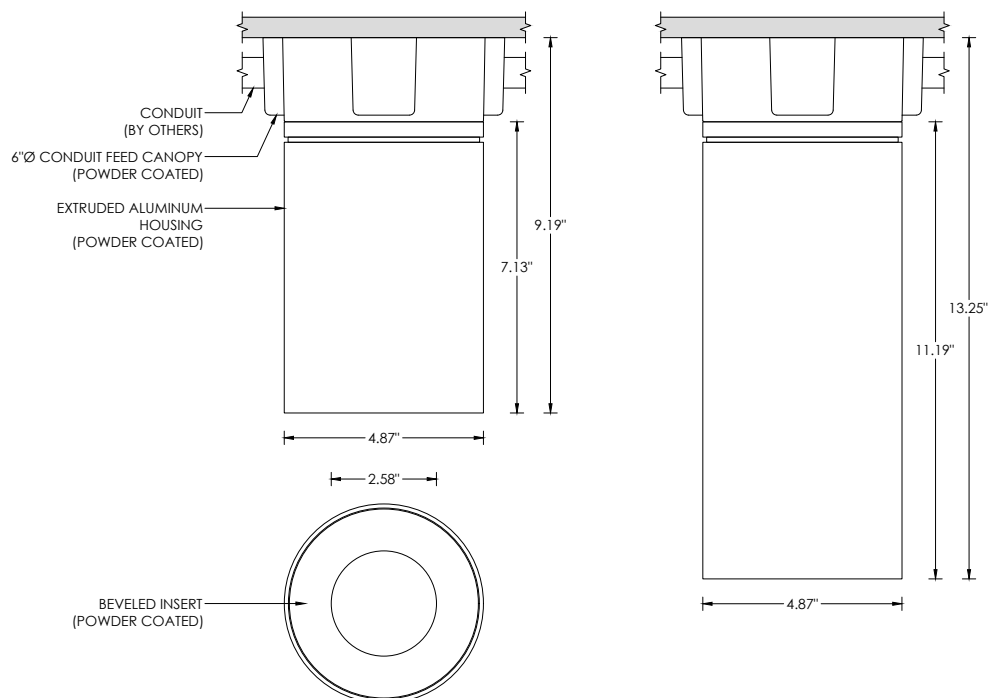
MOUNTING

All hardware included for mounting to 4" octagonal junction box
Conduit feed cut-out canopy option designed to mount to 4" octagonal junction box
Twist and lock mechanism

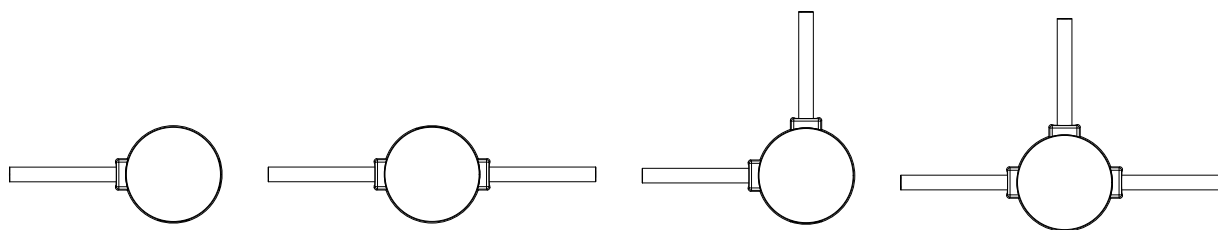
RECESSED 4" OCTAGONAL JUNCTION BOX BY OTHERS
STANDARD CANOPY MOUNT



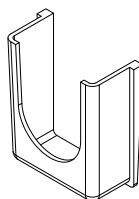
SURFACE 4" OCTAGONAL X 1.5" DEEP JUNCTION BOX BY OTHERS
CONDUIT FEED CANOPY MOUNT (CFX OPTION)



CONDUIT FEED CANOPY MOUNTING OPTIONS



CONDUIT COVER
3 PROVIDED WITH EACH
CONDUIT FEED CANOPY



BLANK
2 PROVIDED WITH EACH
CONDUIT FEED CANOPY

